

MICHIGAN CHESS

Price \$3.00

*Everyone knows that chess players are in
a class all their own, but never alone...*



*The 2012 M.C.A. Masters Experts
Class Championships!*

February - March 2012



Published by the Michigan Chess Association
 Affiliated with US Chess Federation
 Visit us online at www.michess.org
 Send submissions to michessmag@gmail.com

Membership Fees

Membership Type	1 Year
Regular Membership with Magazine	\$15
Regular Membership without Magazine	\$10
Senior (over 65)	\$10
Family Membership	\$25
(all members must reside at the same address)	
Life Membership	\$300

Advertising Rates

Standard Rates

Full page	7.5 x 9.75	\$110
Half page	7.5 x 4.75	\$70
Quarter page	Flexible	\$45

Rates for Michigan Chess tournament organizers

Full page	7.5 x 9.75	\$75
Half page	7.5 x 4.75	\$40
Quarter page	Flexible	\$20

Purpose and Services

The Michigan Chess Association is a non-profit organization, which promotes chess education for juniors and adults by publishing Michigan Chess. We also aid schools, chess clubs and local chess events with publicity, information and supplies; by organizing Michigan championship events.

Honorary Life Members

These members have been designated Honorary Life Members of the Michigan Chess Association in recognition of their services and contributions to chess in Michigan. They have honored the MCA far more than the Association could honor them.

H. Jay Carr	Fred Cramer*
Ron Finegold	Howard Gaba*
John Griffin	Thomas A. Jenkins*
Lou Kellner	David Moody
Paul Poschel	Paul Simmons
Mike Skidmore	Harold Steen*
Fjola Vandenburg*	V. E. Vandenburg*

MCA's Hall of Fame

V. E. Vandenburg*	Paul Poschel
J. D. Brattin*	Leon Stolzenburg
Fjola Vandenburg*	Marvin Palmer
Howard Gaba*	George Eastman
Andrew Palmi*	David Moody
Ron Finegold	Harold Steen*
Paul Simmons	H. Jay Carr
Mike Skidmore	Peter C. Nixon
Stan Beckwith	

Patron Members

Contributing \$75 or more in addition to membership dues makes you a Patron Member. We list your name for a year plus send your magazine by first class post. All donations to the MCA are tax deductible.

Robert W. Emke, Jr.	Norman Haygood, Jr.
Robert Heritier	Toshio Imai*
Peter Meyer and Family	Paul Michel, Jr
Tony Palmer	Tamas Proszkow
Sharat Shetty and Family	B. Michael Williams
Virginia Vandenburg	

(*Deceased)

Board of Directors

President	Jennifer Skidmore	jmscamelot@gmail.com	(734) 678-0463
Vice-President	Alan Kaufman	alanisgreen@yahoo.com	(248) 497-6912
Treasurer	Jeff Aldrich	jeffchess@charter.net	(810) 955-7271
Secretary	Stan Jarosz	sjarostan@netscape.net	(616) 784-1235
Elected Director	Ed Mandell	allthekingsmench@aol.com	(586) 786-0096
Elected Director	Matt Trujillo	matthew-trujillo@hotmail.com	(810) 225-3000
Elected Director	Mike Smith	redwing_85@hotmail.com	(734) 625-5057
Membership Secretary	Paul Kane	paulgkane@gmail.com	(734) 845-6998

Please mail membership correspondence (new memberships, renewals, etc.) to:
 Paul Kane, MCA Membership Secretary, P.O. Box 970027, Ypsilanti, MI 48197. Please make checks payable to *Michigan Chess Association*.

Michigan's Top 100

Courtesy of West Michigan Chess
January 2012 USCF Rating List

Rank	Player	Rating	Rank	Player	Rating
1	HOMA, SETH	2386	51	ALDRICH, JEFF R	1942
2	KAHN, AARON E	2366	52	PRATT, GARY	1937
3	STRUGACH, LEONID	2326	53	PARIS, JOSEPH	1929
4	SHETTY, ATULYA ARYA	2302	54	SKIDMORE, JENNIFER	1918
5	SPRENKLE, DAVID C	2236	55	WEST, TONY D	1916
6	FISCHVOGT, ERIC V	2208	56	WILLIAMS, RONALD	1915
7	LEVI, ARIEL S	2204	57	SMITH, MICHAEL R	1910
8	CZUHAI, KEVIN	2200	58	DRAKE, ROB	1909
9	NOREN, KEVIN	2200	59	CROEL, DUANE	1907
10	BROOKS, JOHN R	2185	60	CARTER, ASHLEY	1901
11	MCGREW, TIMOTHY J	2174	61	JAROSZ, STANLEY J, JR	1901
12	HARTWIG, THOMAS E	2167	62	HALLORAN, JOEL	1893
13	BRUMLEY, RONALD EUGENE, JR	2166	63	HICKEY, WAYNE GENE	1893
14	MARFIA, JIM	2157	64	ECKERT, WILLIAM, III	1889
15	SANETULLAEV, ALISHER	2150	65	HRONCHEK, DAN R	1889
16	GHOBRIAL, AMEER SHAWKY	2146	66	KITTS, GARY	1888
17	DAVIDOVICH, MANIS	2142	67	SMITH, MICHAEL	1887
18	HAHN, DAVID	2135	68	ANDERSON, NEAL	1884
19	BOJANOVIC, RATKO	2127	69	VANDIVIER, DON L	1881
20	BOWERSOCK, MICHAEL	2126	70	SAWASKI, JAMES H	1880
21	BORA, SAFAL	2124	71	ALSON, JEFF	1876
22	DANIEL, AARON	2120	72	FEE, C EDWARD	1862
23	NICHOLS, ANTHONY T	2112	73	ABBOTT, JAMES	1859
24	PALMER, TONY	2103	74	GARRISON, R RAYMOND	1857
25	CIAFFONE, ROBERT B	2100	75	DE LUCA, RONALD DAVID	1856
26	WANG, JALEN	2096	76	MILLER, JOHN M	1856
27	CHEN, MICHAEL L	2083	77	ALDRICH, JUSTIN M	1831
28	LARSON, ERIC DANIEL	2076	78	THACH, SCOTT D	1830
29	BEIDER, ANDREW M	2051	79	LAHR, FREDERICK H	1820
30	SONG, EDWARD	2050	80	WILSON, BRYAN CECIL	1817
31	PETERS, EPIPHANY M	2049	81	MINSKEY, CHARLES	1814
32	WANG, LEYUN	2036	82	SUN, ALAN TONG	1814
33	VIRKUD, APURVA	2035	83	BEMARKAR, KIRAN BALAJI	1812
34	GREGG, ALAN MICHAEL	2030	84	KEMP, KAYEEN	1809
35	CATLIN, ANDREW G	2021	85	SCHMIDT, CHRISTOPHER R	1808
36	DEATRICK, ALEXANDER	2008	86	RUTKOFKSKE, LONNIE W	1805
37	DREXEL, JOHN R	2003	87	MATIAS, I C	1802
38	ENDSLEY, BARRY E	2000	88	SKIDMORE, MICHAEL	1800
39	EVERETT, MORGAN	2000	89	MANION, TOM A	1796
40	DAS, MANMOHAN	1993	90	REID, RICKY	1796
41	RHEE, WILLIAM	1986	91	FICK, DOUGLAS	1795
42	GENTRY, LOYD	1977	92	MCGREW, BETHEL	1794
43	BRANDT, BENJAMIN J	1970	93	JACKSON, KEVIN F, SR	1790
44	MOODY, DAVID W	1955	94	TOLLIVER, KAMERON	1789
45	TURNER, KEITA KWAME	1954	95	WEBSTER, KYLE D	1786
46	WICKERING, ALLEN	1954	96	LIBBY, DANIEL T	1784
47	CHEN, JUSTIN LU	1949	97	TRUJILLO, MATTHEW	1783
48	BAILEY, GREGORY E	1948	98	ROTH, BRUCE I	1778
49	CHEN, PETER L	1947	99	BEADLE, ALLEN J	1777
50	EDGERLE, IAN	1947	100	NOLAN, MICHAEL W	1776

Michigan Champions

NEW!!! 2012 Masters Champion	Safal Bora
NEW!!! 2012 Expert Champion	Morgan Everett
NEW!!! 2012 Class A Champion	Benjamin Brandt
NEW!!! 2012 Class B Champion	Daniel Libbey
NEW!!! 2012 Class C Champion	Timothy P. Johnson
NEW!!! 2012 Class D Champion	Gaurev Gidwani
NEW!!! 2012 Class E Champion	Andrew Schremser
NEW!!! 2012 Novice Champion	Chirag Rudrangi
NEW!!! 2011 Senior Champion	Eric Fischvogt
NEW!!! 2011 Senior Reserve Champion	Thomas Kampfert
2011 Bottom-Half Class Over 1900	Kevin Czuhai
2010 Bottom-Half Class U1900	Ian Edgerle
2011 Bottom-Half Class U1700	Alan Sun
2011 Bottom-Half Class U1500	Chris Stapleton
2011 Bottom-Half Class U1300	Kyle Sheffer
2011 Bottom-Half Class U1100	Seth Strout Jenison
2011 Michigan Open – Open	Atulya Shetty
2011 Michigan Open – Reserve	Justin Aldrich
2011 Michigan Open – Booster	Ed Mandell
2011 Primary K-3 Team	Ann Arbor Logan Troy Barnard Ramesh St. Clair Shores St. Issac Joques
2011 Primary K-3 Team Reserve	Detroit Comerstone Nevada
2011 Elementary K-5 Team	Ann Arbor King Kasparov
2011 Elementary K-5 Team Reserve	Our Lady of Good Counsel
2011 Elementary K-6 Team	Detroit Bates
2011 Junior High K-9 Team	Plymouth East Tigers
2011 Junior High K-9 Team Reserve	Plymouth Our Lady of Good Counsel Redford Washington Parks Academy Farmington Hills Maria Montessori
2011 High School K-12 Team	Ann Arbor Greenhills
2011 High School K-12 Team Reserve	Ann Arbor Huron River Rats Macomb L'Anse Creuse North
2011 Masters Champion	FM Seth Homa
2011 Experts Champion	NM Alisher Sanetullaev
2011 Class A Champion	Safal Bora
2011 Class B Champion	Matthew Trujillo
2011 Class C Champion	Andrew Hanna
2011 Class D Champion	Bill Ignasiak
2011 Class E Champion	Ron Larson
2011 Novice Champion	Adam Waller

Congratulations to all of the 2011-2012 Michigan Champions!

This list includes Michigan players who've played at least one regular rated game in state in the past 12 months. –Editor

*All board diagrams created using
<http://www.jinchess.com/chessboard/composer/>
by Alexander Maryanovsky*

From the Editor's Desk

At first glance, you might be wondering what the cover's all about. Chess players have a certain *je ne sais quoi* about them, a certain distinctiveness or quality that tends to bring out the best in people. Well, it seemed fitting to show how "classy" we Michigan chess players are in light of the recently completed Masters, Experts, and Class Championships held in Lansing in January.

Not only does this issue have "class," but it also carries with it an international flair: Erik Malmsten of Canadian Chess News was kind enough to share with *Michigan Chess Magazine* an article about Michigan Chess Hall of Fame Member George Eastman.

Now back down to earth. We're barely into 2012 and there's chess a-plenty in the next three months! In addition to many of the regularly-scheduled tournaments, scholastic tournaments are popping up all over the place! Leave it to the groundhogs to argue about whether there will be six more weeks of Winter or Spring is just around the corner. With all of these opportunities to study those mystical 64 squares, it's no wonder we're all willing to sit inside and play CHESS!

The *Michigan Chess Magazine* is a collaborative, volunteer effort. The more members who contribute to the magazine, the better it is. The publishing team encourages you, the reader and MCA membership to submit your games and articles. We will help you edit and annotate your games, or you may provide your own. Games submitted in PGN format are preferred, but any format is accepted. Your articles about chess events, both club activities and tournaments, are especially welcome.

If you would like to contribute an article to the next issue of *Michigan Chess Magazine*, please e-mail it to michessmag@gmail.com no later than March 31, 2012 with the title of the article in the "Subject" line.

In addition, many thanks to the following individuals for their contributions to this issue:

Jeff Aldrich
Tony Palmer
Jennifer Skidmore

Erik Malmsten
Bruce Roth

Thank you for your support of MCA!

Best regards,
Scott Faust, Editor ♔

Table of Contents

Tactics Quiz.....	5
The 2012 MCA Masters, Experts, and Class Championships!	7
George Eastman, Toronto Champion circa 1930.....	14
Chess Trivia Quiz, Part 3.....	18
Michigan's Early Chess History.....	20
Michigan Chess Clubs.....	22
Michigan Chess Tournament Calendar.....	23

Chess Associations in Michigan

Michigan Chess Association	www.michess.org
West Michigan Chess	www.westmichiganchess.com
Lake Superior Chess Association	www.lakesuperiorchess.org

Websites for chess clubs in Michigan are listed in "Chess Clubs" on page 22.

National/International Chess Websites

United States Chess Federation	www.uschess.org
World Chess Federation (FIDE)	www.fide.com
Chess Federation of Canada	www.chess.ca
English Chess Federation	www.englishchess.org.uk
German Chess Federation	www.schachbund.de
Russian Chess Federation	www.russiachess.org

Did you know???

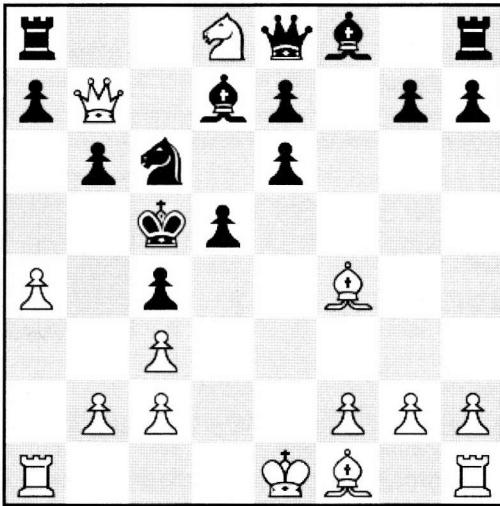
You can connect with the Michigan Chess Association on Facebook™! Just search for "Michigan Chess Association" and Like MCA! It's that simple!



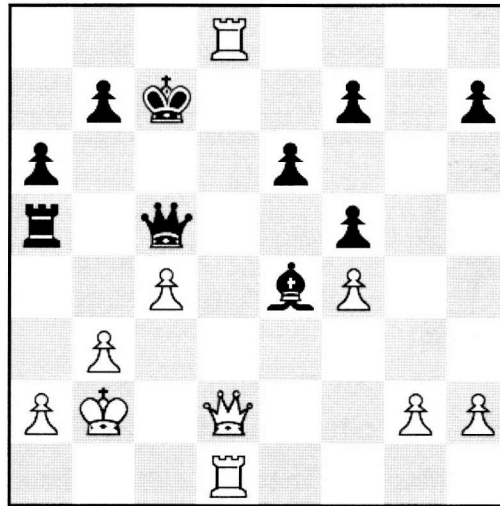
Tactics Quiz

By Tony Palmer

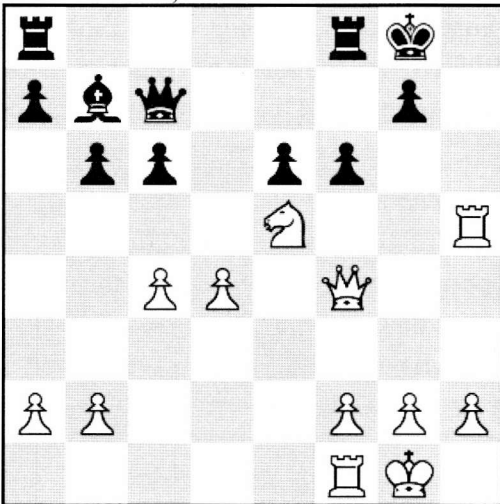
Rudolf Spielmann (1883-1942) was one of the great romantics, an attacking genius famous for flashy tactics and sparkling combinations. Solutions are on page 10.



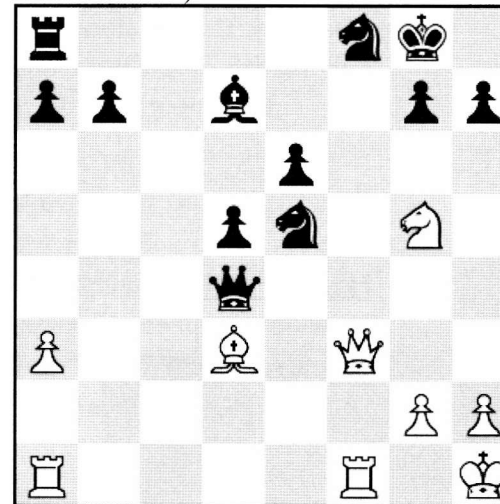
1) White to Move



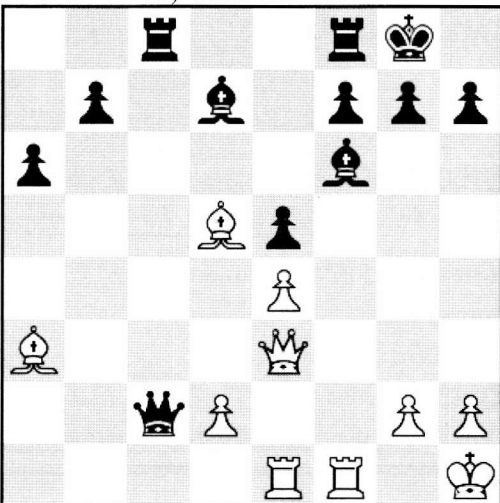
2) White to Move



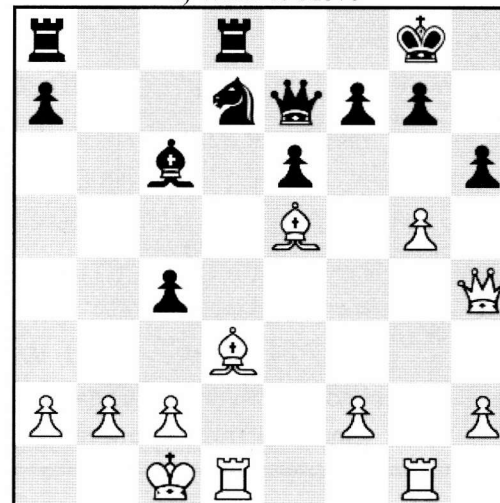
3) White to Move



4) White to Move



5) White to Move



6) White to Move

ALL THE KING'S MEN CHESS AND BRAIN GAMES, INC.



An INVESTMENT in your FUTURE...an INTERNATIONAL Language!



27170 DEQUINDRE ROAD, WARREN, MICHIGAN 48092 → (586) 558-4790 • (586) 558-2046 (Fax)

◆ Home of the UNIVERSAL CHESS CLUB ◆



UNIVERSAL LATE WINTER SWISS 5-SS. \$1,600 PRIZE FUND! SATURDAY-SUNDAY, MARCH 3-4, 2012



Site: All The King's Men Chess and Brain Games, Inc., in the PARKVIEW SQUARE Strip Mall, (586) 558-4790 - 27170 Dequindre Road, Warren, MI 48092

Directions: All The King's Men Chess and Brain Games, Inc., is located in the PARKVIEW SQUARE Strip Mall, around back. The Mall is located on Dequindre Road just North of 11 Mile Road (1-1/2 miles East of I-75, 12 Mile Road Exit, and 3/4 of a mile North of I-696, Dequindre Road Exit) in the City of Warren, MI.

For maps, visit <http://www.yahoo.com> or <http://www.mapquest.com>

Format: 5-SS. USCF and MCA Memberships Required (can be purchased on site). Up to TWO 1/2-point byes available; must be requested prior to start of RD 3.

PRIZE FUND: \$1,600 (b/44, b/min. 6 per class).

HEADPHONES cannot be used if opponent objects for any reason. Player must be willing to present same to TD's for examination at any time. Failure to do so will result in removal from tournament without refund

CELL PHONES must be turned off or in silent mode while in tournament room.

Time Control: G-90

Rounds: SAT., March 3: 11:00, 2:30, 6:00. SUN., March 4: 11:00, 2:30

Entry Fee: \$50 by Tue, 2/28; add \$10 after—IM's/GM's FREE, \$50 EF deducted from prize

Registration: SAT., March 3, 9:30-10:30 AM

Prizes: **PRIZE FUND:** \$1,600 (b/44, b/min. 6 per class): 1st, 2nd: \$350, \$200. TOP X, A, B, C D, E, U1000/UNR: Each \$150 (Unrated eligible ONLY for U1000/UNR or Overall prizes). \$50 Gift Certificate for Biggest Upset of Tournament!

Entries/Info: Dr. Ed Mandell, All The King's Men Chess and Brain Games, Inc.

PARKVIEW SQUARE Strip Mall, Around Back

27170 Dequindre Road, Warren, MI 48092

(586) 558-4790 - Fax: (586) 558-2046

Email: allthekingsmench@aol.com • Web: <http://www.allthekingsmenchess.com>

The 2012 MCA Masters, Experts, and Class Championships!

By Scott Faust, Editor
Photos courtesy of Jeff Aldrich

This year's *Michigan Chess Association Masters, Experts, and Class Championships* Tournament was held at the Radisson Lansing Hotel in snowy downtown Lansing, Michigan over the weekend of January 14-15. Jeff Aldrich once again took on the role of Chief Tournament Director and, I must say, did an excellent job of keeping the tournament moving right along throughout the entire weekend. For the fourth year in a row snow was falling at the start of the tournament. For the 132 players in attendance the only concern was attempting to fell their erstwhile opponent at the board.

This tournament is a particular favorite of mine, and I would hazard a guess it is also a favorite of many other players from around the state, since it is not only an opportunity to spend the entire weekend playing chess, but also an opportunity to see old friends and make new ones. It is as much a social event as it is a chess tournament.

Masters/Experts

Safal Bora walked away with the title and trophy for the Masters with a score of 4.5/5.0. Morgan Everett was the Expert winner with a score of 3.0/5.0.



Safal Bora, 1st Place Masters

Masters/Experts Standings

No.	Name	State	Rating	1	2	3	4	5	Score
1	Safal Bora (9)	MI	2124	W20	W5	W14	D2	W3	4.5
2	Atulya Shetty (2)	MI	2302	-H-	W16	W9	D1	W7	4
3	Ariel Levi (4)	MI	2204	D16	W19	W17	W14	L1	3.5
4	Seth Homa (1)	MI	2386	L9	W20	D8	W16	W6	3.5
5	Morgan Everett (20)	MI	2000	-B-	L1	W13	L6	W15	3
6	Eric Larson (14)	MI	2076	W15	L14	W10	W5	L4	3
7	Alan Gregg (17)	MI	2030	W11	D9	-H-	W15	L2	3
8	Edward Song (15)	MI	2050	-H-	D10	D4	D9	W14	3
9	Robert Ciaffone (11)	MI	2100	W4	D7	L2	D8	D12	2.5
10	Steven Cooklev (7)	IN	2162	D17	D8	L6	D11	W18	2.5
11	David Hahn (8)	MI	2135	L7	L12	-B-	D10	W17	2.5
12	Vladimir Drkulec (12)	ON	2093	L14	W11	L15	W17	D9	2.5
13	Thomas Hartwig (6)	MI	2167	-H-	L17	L5	W20	W16	2.5
14	Thomas Ward (3)	MI	2227	W12	W6	L1	L3	L8	2
15	Kevin Czuhai (5)	MI	2200	L6	W18	W12	L7	L5	2
16	Michael Chen (13)	MI	2083	D3	L2	W18	L4	L13	1.5
17	Apurva Virkud (16)	MI	2035	D10	W13	L3	L12	L11	1.5
18	Alexander Deatrick (19)	MI	2008	D19	L15	L16	-B-	L10	1.5
19	Anthony Nichols (10)	MI	2112	D18	L3	-H-	-U-	-U-	1
20	Andrew Catlin (18)	MI	2021	L1	L4	-H-	L13	-U-	0.5

Class A

Benjamin Brandt was the clear winner of the Class A section with a score of 4.5/5.0. Will Rhee won the second place trophy on tie-breaks, tying Peter Chen with a score of 4.0/5.0. Joe Halloran carried home the trophy for 1st U1900 with a score of 3.5/5.0.



Benjamin Brandt, 1st Place Class A



Will Rhee, 2nd Place Class A



Joe Halloran, 1st U1900

No.	Name	State	Rating	1	2	3	4	5	Score
18	Christopher Schmidt (20)	MI	1808	W13	L3	L17	D15	L12	1.5
19	Allen Wickering (4)	MI	1954	L17	L6	L13	L12	-B-	1
20	Michael Skidmore (22)	MI	1800	-B-	L1	L14	L13	-U-	1
21	Mark Kende (12)	IA	1895	-H-	L5	-U-	-U-	-U-	0.5
22	Binu Gerald (17)	MI	1835	-F-	-U-	-U-	-U-	-U-	0

Class B

In Class B, Daniel Libby scored a perfect 5.0/5.0 to claim the title and trophy for 1st Place. Isaac Zylstra followed in 2nd Place with a score of 4.0/5.0. Brendon Lee of Ontario (who played your Editor in the first round and scored a decisive victory!) was 1st U1700.



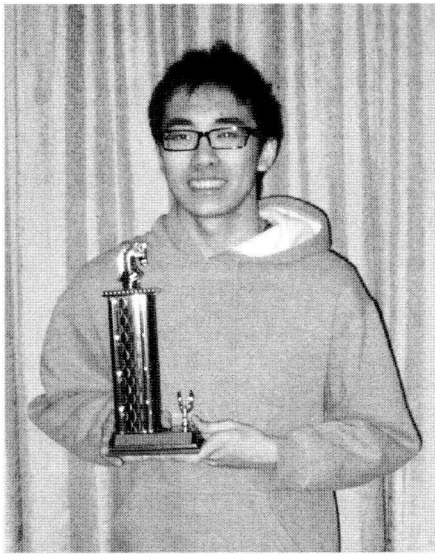
Daniel Libby, 1st Place Class B



Isaac Zylstra, 2nd Place Class B

Class A Standings

No.	Name	State	Rating	1	2	3	4	5	Score
1	Benjamin Brandt (3)	MI	1970	D14	W20	W5	W9	W4	4.5
2	William Rhee (2)	MI	1986	-B-	W7	D9	D4	W6	4
3	Peter Chen (7)	MI	1947	W15	W18	L4	W17	W8	4
4	Justin Chen (5)	MI	1949	W12	W10	W3	D2	L1	3.5
5	Stanley Jarosz Jr (11)	MI	1901	D8	W21	L1	W16	W9	3.5
6	Joel Halloran (13)	MI	1893	-H-	W19	W8	W7	L2	3.5
7	Jennifer Skidmore (8)	MI	1918	W16	L2	W15	L6	W14	3
8	Manmohan Das (1)	MI	1993	D5	W14	L6	W10	L3	2.5
9	Gregory Bailey (6)	MI	1948	-X-	W17	D2	L1	L5	2.5
10	Jacob Fortuna (10)	MI	1903	W11	L4	D16	L8	W17	2.5
11	Lonnie Rutkofske (21)	MI	1805	L10	W12	-H-	D14	D13	2.5
12	Virgina Vandenburg (16)	MI	1867	L4	L11	-H-	W19	W18	2.5
13	Tony West (9)	MI	1916	L18	L15	W19	W20	D11	2.5
14	Gary Kitts (14)	MI	1888	D1	L8	W20	D11	L7	2
15	Justin Aldrich (18)	MI	1831	L3	W13	L7	D18	D16	2
16	Kiran Bemkar (19)	MI	1812	L7	-B-	D10	L5	D15	2
17	Michael Smith (15)	MI	1887	W19	L9	W18	L3	L10	2



Brendon Lee, 1st U1700

Class C

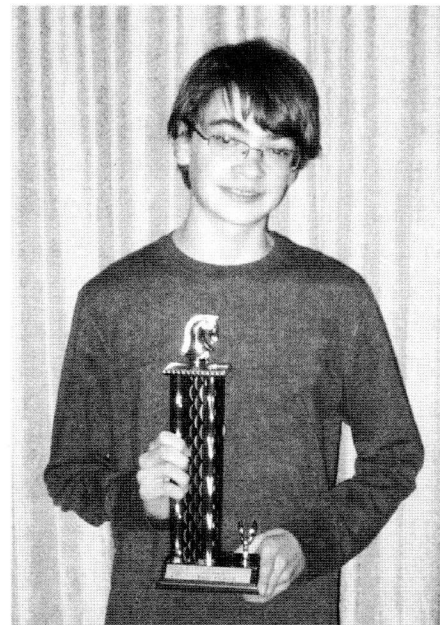
A three-way tie with a 4.0/5.0 score in Class C led to Timothy P. Johnson winning 1st, Zachery Smith winning 2nd, and Kenneth Tack receiving 1st U1500 on tie-breaks.



Timothy P. Johnson, 1st Class C

Class B Standings

No.	Name	State	Rating	1	2	3	4	5	Score
1	Daniel Libby (4)	MI	1784	W20	W8	W3	W9	W4	5
2	Isaac Zylstra (9)	MI	1686	W16	W7	L9	W11	W8	4
3	Richard Glew (5)	ON	1761	W18	W12	L1	D4	W7	3.5
4	Kevin Jackson Sr (2)	MI	1790	D13	W6	W5	D3	L1	3
5	Brendon Lee (10)	ON	1678	W15	D9	L4	D12	W10	3
6	Ronald Grzegorzczk (18)	MI	1628	W11	L4	L7	-B-	W12	3
7	Evan Hawver (6)	MI	1730	W10	L2	W6	D8	L3	2.5
8	Jeffrey Guilfoyle (7)	MI	1723	W19	L1	W16	D7	L2	2.5
9	Tom Manion (1)	MI	1796	W14	D5	W2	L1	-U-	2.5
10	Darrin Sherer (16)	MI	1647	L7	W14	D12	W13	L5	2.5
11	Stan Beckwith (8)	MI	1702	L6	W13	-H-	L2	W14	2.5
12	Loren Schwiebert (13)	MI	1660	W17	L3	D10	D5	L6	2
13	Ben Li (12)	MI	1674	D4	L11	D17	L10	W15	2
14	Glen Schmiege (11)	MI	1675	L9	L10	W19	D15	L11	1.5
15	Scott Faust (20)	MI	1601	L5	L18	-B-	D14	L13	1.5
16	Richard Wilson (19)	MI	1603	L2	W20	L8	-U-	-U-	1
17	Kyle Webster (3)	MI	1786	L12	D19	D13	-U-	-U-	1
18	James Huerta (15)	MI	1654	L3	W15	-U-	-U-	-U-	1
19	B Michael Williams (17)	MI	1633	L8	D17	L14	-U-	-U-	0.5
20	Christopher Shen (14)	OH	1655	L1	L16	-U-	-U-	-U-	0



Zachery Smith, 2nd Place Class C



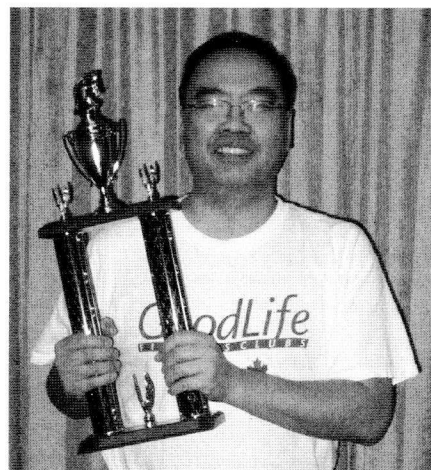
Kenneth Tack, 1st U1500

Class C Standings

No.	Name	State	Rating	1	2	3	4	5	Score
1	Timothy P Johnson (8)	MI	1527	W2	W23	D6	W4	D3	4
2	Zachary Smith (20)	MI	1429	L1	W24	W10	W15	W7	4
3	Kenneth Tack (15)	MI	1477	W13	W18	-H-	W5	D1	4
4	Melissa Lee (7)	ON	1539	W15	W9	W7	L1	D6	3.5
5	Joshua Posthuma (11)	MI	1511	W17	D6	W8	L3	W12	3.5
6	William Ignasiak (1)	MI	1577	W16	D5	D1	D9	D4	3
7	Soumya Kulkarni (6)	MI	1543	W19	W20	L4	W12	L2	3
8	Derrick Harper (4)	MI	1555	D12	W11	L5	W19	D9	3
9	Justin Jacqmain (21)	MI	1425	W22	L4	W18	D6	D8	3
10	Zachary Johnson (17)	MI	1469	L18	W13	L2	W16	W15	3
11	Michael Hill (22)	MI	1410	D21	L8	W14	W20	D13	3
12	Joy Chen (16)	MI	1475	D8	W21	W16	L7	L5	2.5
13	Sam Costanzo (2)	MI	1567	L3	L10	W24	W17	D11	2.5
14	Mark Servinsky (3)	MI	1567	L20	D19	L11	W23	W18	2.5
15	Marilyn Smith (19)	MI	1444	L4	W22	W23	L2	L10	2
16	Nathan Metcalf (13)	MI	1495	L6	W17	L12	L10	W22	2
17	Dan Holt (23)	MI	1405	L5	L16	-B-	L13	W19	2
18	DeWayne Van Horn (5)	MI	1554	W10	L3	L9	-H-	L14	1.5
19	Julian Wellman (18)	MI	1467	L7	D14	W21	L8	L17	1.5
20	Christopher Hausner (14)	MI	1478	W14	L7	-H-	L11	-U-	1.5
21	J.R. Udvadia (10)	MI	1520	D11	L12	L19	L22	-B-	1.5
22	Jacob Brasseur (9)	MI	1522	L9	L15	-H-	W21	L16	1.5
23	Ed Mandell (24)	MI	1400	W24	L1	L15	L14	-U-	1
24	Joe Beane Jr (12)	MI	1505	L23	L2	L13	-B-	-U-	1

Class D

It was all 4.0's for the top three in Class D! Tie-breaks awarded 1st Place to Frank Lee, 2nd Place to Guarev Gidwani and 1st U1300 to Nickolas Jennings.



Frank Lee, 1st Place Class D



Guarev Gidwani, 2nd Place Class D

Solutions to Tactics Quiz

from page 6

THEME = SPIELMANN

- 1) 1. Qxc6+! Bxc6 2. Nxe6#
- 2) 1. Rc8+! 1-0 (1 ... Kxc8 2. Qd8#)
- 3) 1. Rh8+! Kxh8 2. Ng6+ 1-0 (3. Qxc7)
- 4) 1. Qxf8+! 1-0 (1 ... Rxf8 2. Bxh7+ Kh8 3. Rxf8#)
- 5) 1. Rxf6! gxf6 2. Qg3+ Kh8 3. Be7! 1-0 (4. Bxf6+)
- 6) 1. Qxh6!! gxh6 2. gxh6+ Kf8 3. Rg8+! 1-0 (3 ... Kxg8 4. h7+)



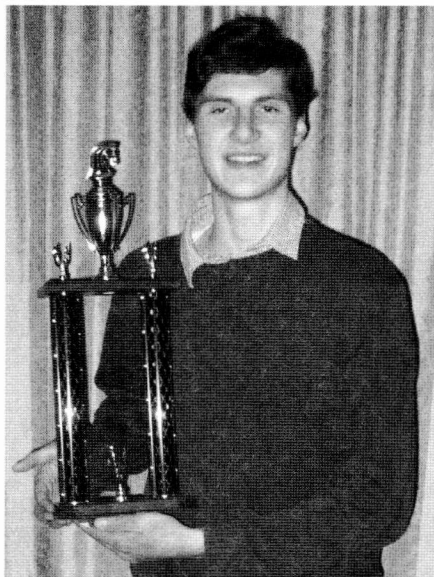
Nickolas Jennings, 1st U1300

Class D Standings

No.	Name	State	Rating	1	2	3	4	5	Score
1	Frank Lee (15)	ON	1266	W2	W13	W7	D5	D4	4
2	Gaurav Gidwani (6)	MI	1331	L1	W17	W8	W7	W5	4
3	Nickolas Jennings (18)	MI	1224	-B-	L7	W14	W12	W10	4
4	Noel Bedy (1)	MI	1395	W17	D11	-H-	W6	D1	3.5
5	Paul Michel Jr (3)	MI	1355	D9	W16	W11	D1	L2	3
6	Larry Hodge (13)	MI	1268	L7	-B-	W13	L4	W12	3
7	Zehai Zhang (5)	ON	1336	W6	W3	L1	L2	D9	2.5
8	Andrew Campbell (17)	MI	1233	W10	L9	L2	W13	D15	2.5
9	Alex Patterson (12)	MI	1286	D5	W8	L12	D15	D7	2.5
10	Ronald Larson (8)	MI	1314	L8	D14	W17	W11	L3	2.5
11	Ayush Das (11)	MI	1289	W12	D4	L5	L10	D16	2
12	Douglas Reist (2)	MI	1381	L11	W15	W9	L3	L6	2
13	Evgeny Epshtein (4)	MI	1344	W14	L1	L6	L8	W17	2
14	Adam Waller (14)	MI	1268	L13	D10	L3	D16	-B-	2
15	Jose Ybarra (7)	MI	1316	D16	L12	-H-	D9	D8	2
16	Paul Mills Jr (16)	MI	1263	D15	L5	-H-	D14	D11	2
17	Nathan Wood (9)	MI	1310	L4	L2	L10	-B-	L13	1

Class E

Class E was decided on tie-breaks with Andrew Schremser taking 1st Place and Rachel Tao taking 2nd Place, both with a score of 4.0/5.0.



Andrew Schremser 1st Class E



Rachel Tao, 2nd Place Class E

Class E Standings

No.	Name	State	Rating	1	2	3	4	5	Score
1	Andrew Schremser (3)	MI	1164	W7	W11	D2	D3	W6	4
2	Rachel Tao (13)	ON	963	W15	W12	D1	W5	D3	4
3	Eric Zhong (8)	MI	1070	W16	D5	W6	D1	D2	3.5
4	Lily Zhou (16)	ON	853	D13	L8	W14	W9	W11	3.5
5	Nick Applebee (1)	MI	1176	W9	D3	W12	L2	D8	3
6	James Lemon (15)	MI	886	W14	W13	L3	W7	L1	3
7	Jacob Crandell (11)	MI	991	L1	W15	W11	L6	W12	3
8	Jeffrey Ding (2)	MI	1176	L11	W4	-H-	W13	D5	3
9	Jeannie Zhang (9)	ON	1019	L5	D16	W10	L4	W13	2.5
10	Malachi Keener (14)	MI	944	L12	D14	L9	W16	W15	2.5
11	Charles Cassidy (10)	MI	1011	W8	L1	L7	W14	L4	2
12	Christian Hausner (5)	MI	1145	W10	L2	L5	W15	L7	2
13	Theodore Gregg (7)	MI	1087	D4	L6	W16	L8	L9	1.5
14	Laurence Yang (6)	MI	1108	L6	D10	L4	L11	W16	1.5
15	Tim D Johnson (4)	MI	1146	L2	L7	-B-	L12	L10	1
16	Robert Manning (17)	MI	809	L3	D9	L13	L10	L14	0.5



Novice/Unrated

Two players scored 4.0/5.0 in the Novice/Unrated Section with 1st Place being awarded to Chirag Rudrangi and 2nd Place to Greg Brazee on tie-breaks. Tie-breaks also decided 3rd Place for Connor Linn and 1st U900 for Bryce Richardson who each had 3.5/5.0.

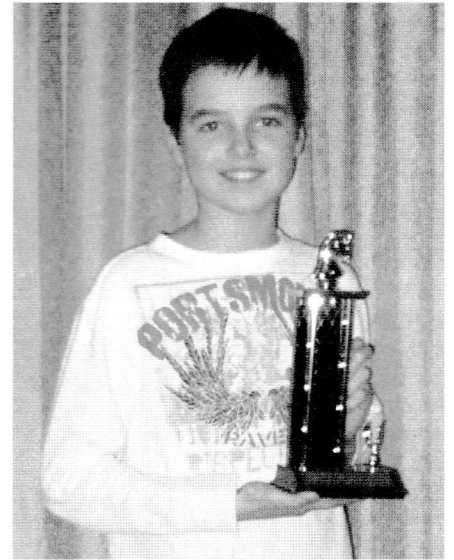
Emmanuel Richardson was the clear U800 winner with 3.0/5.0, followed by Jack Li with 2.5/5.0 to take the U700 trophy. Sumit Basak was the Unrated trophy winner with 2.5/5.0.



Chirag Rudrangi, 1st Place Novice



Greg Brazee, 2nd Place Novice



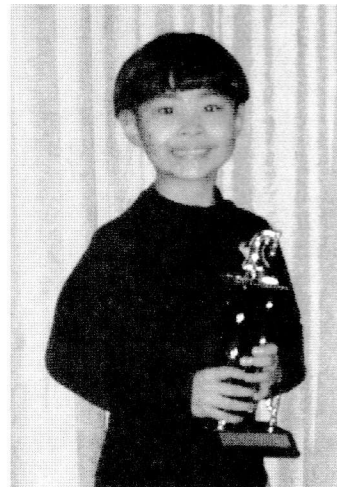
Connor Linn, 3rd Place Novice



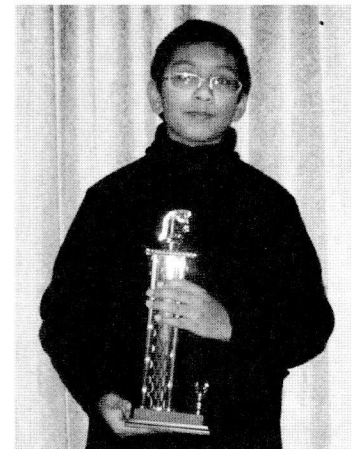
Bryce Richardson
1st U900



Emmanuel Richardson
1st U800



Jack Li
1st U700



Sumit Basak
1st Unrated

Novice Standings

No.	Name	State	Rating	1	2	3	4	5	Score
1	Chirag Rudrangi (5)	MI	594	W8	L4	W5	W7	W3	4
2	Greg Brazee (14)	MI	nnnn	W6	W9	L3	W10	W4	4
3	Connor Linn (1)	MI	848	W5	W10	W2	D4	L1	3.5
4	Bryce Richardson (2)	MI	810	W12	W1	W7	D3	L2	3.5
5	Emmanuel Richardson (8)	MI	395	L3	W13	L1	W14	W12	3
6	Ellen Tao (4)	ON	708	L2	L7	W14	W13	W10	3
7	Jack Li (7)	ON	461	W14	W6	L4	L1	D8	2.5
8	Sumit Basak (12)	MI	nnnn	L1	W11	-H-	D9	D7	2.5
9	Jacob Mathews (3)	MI	726	W11	L2	L10	D8	W13	2.5
10	Jahlin Brooks (6)	MI	526	W13	L3	W9	L2	L6	2
11	Luke Hausner (10)	MI	110	L9	L8	-B-	L12	W14	2
12	Anshuk Rudrangi (9)	MI	128	L4	D14	L13	W11	L5	1.5
13	Khushi Afre (11)	MI	nnnn	L10	L5	W12	L6	L9	1
14	Agniva Bhaumik (13)	MI	nnnn	L7	D12	L6	L5	L11	0.5



2012 GREAT LAKES CHESS OPEN



FRIDAY-SUNDAY, MAY 11-13, 2012

\$3,500 PRIZE FUND!

MC CAMLY PLAZA HOTEL, 50 CAPITAL AVENUE, SW, BATTLE CREEK, MI 49037

FORMAT: 3 SECTIONS (OPEN, U1700, U1000) • 2-DAY & 3-DAY SCHEDULES
 FOR OPEN and U1700 ONLY, 5-SS. 1-DAY ONLY SCHEDULE FOR U1000, 4-SS
 OPEN and U1700 Merge after RD 2. Up to two 1/2-point byes allowed; must be requested
 prior to start of RD 3. Re-Entry in U1700 Only: \$35. USCF and a STATE Membership
 Required – can be purchased On Site!

SPECIAL EVENTS
 Sat, 7 Pm: Blitz Tournament. Ef: \$10 (85% payout). Sun, 9 Am: 1m or
 Gm Lecture. \$10

ENTRY FEE BY MAY 11

(Add \$10 After, Add \$15 On Site)

OPEN: 3-Day \$53; 2-Day \$52. IM's/GM's
FREE! (EF deducted from winnings.) **U1700:**
 3-Day \$43; 2-Day \$42. **U1000:** \$20.

REGISTRATION

3-Day: Fri, May 11: 5:00-6:30 PM
 2-Day: Sat, May 12: 9:00-11:00 AM
 1-Day (U1000): Sat, May 12, 9:00-11:00 AM

Time Limit

3-Day: Rds 1-3, G/2hrs: RDS 4-5, 40/2,
 sd30
 2-Day: Rds 1-2, G-60: RD 3, G/2hrs;
 RDS 4-5, 40/2. sd30. 1-Day (U1000):
 G/45

ROUNDS

3-Day: Fri: 7 pm. Sat: 12, 4:30P. Sun:
 10A, 3:30P
 2-Day: Sat: 11:30A, 2, 4:30P. Sun: 10A,
 3:30P
 1-Day (U1000): Sat: 11:45A, 2, 3:45,
 5:30P

PRIZE FUND: \$3,500

OPEN \$2,050 (b/36, min. 6 per prize group): 1st, 2nd: \$1,500, \$700; TOP
 X, TOP A, TOP U1800/UNR: \$250 (U1700 \$950 (b/36, min. 6 per prize
 group): 1st, 2nd: \$400, \$250; TOP C, TOP D, TOP U1200/UNR: \$125
 U1000 \$300 (b/22, min. 4 per prize group): 1st, 2nd: \$125, \$75; TOP
 700-899, TOP U700/UNR: \$50.
 (UNR eligible for TOP or UNRATED Prizes ONLY.)

STRICT RULE ENFORCEMENT

CELL PHONES must be turned **OFF** or in **SILENT MODE** in the Tournament Room. Infraction: Deduct 1/2 the remaining time or game forfeiture if less than 10 minutes remaining on clock for 1st infraction; automatic forfeiture for 2nd infraction. **Infraction by spectator:** Banned from tournament playing areas for remainder of tournament.

HEADPHONES: HEADPHONES CANNOT BE USED IF OPPONENT OBJECTS FOR ANY REASON AND CANNOT BE USED IN THE LAST ROUND BY PLAYERS WITH A PLUS SCORE. PLAYER MUST BE WILLING TO PRESENT SAME TO TDS FOR EXAMINATION AT ANY TIME. FAILURE TO DO SO WILL RESULT IN REMOVAL FROM TOURNAMENT WITHOUT REFUND. RULES POSTED ON SITE

LODGING

This AAA Four-Diamond Hotel is located in Downtown Battle Creek. Call Toll-Free 1-888-622-2659 for RESERVATIONS or go online at <http://www.mccamlyplaza.com>. Ask for the Great Lakes Open chess rate (\$91/night)—must reserve by April 9th for this rate. Parking \$4, unlimited in and out privileges. Free parking in nearby areas on weekends. For directions to hotel, go online to <http://www.mapquest.com> or <http://www.yahoo.com/maps>.

INFO & ENTRIES: Stan Beckwith (269) 964-2927, 84 Bond Street, Battle Creek, MI 49037-1907

OR [HTTP://WWW.ALLTHEKINGSMENINCHESS.COM](http://WWW.ALLTHEKINGSMENINCHESS.COM)

George Eastman, Toronto Champion circa 1930

By Erik Malmsten

This article comes to Michigan Chess Magazine courtesy of Erik Malmsten of Canadian Chess News. George Eastman is a member of the Michigan Chess Association Hall of Fame.
-Editor

Twenty-year-old George Eastman (Östman) arrived in Canada from Sweden in October of 1923. Eastman won the Toronto Championship six out of seven times 1925- 31, although four times with a tiebreaking playoff. He was also in the thick of things in the Canadian Championships and in 1931 tied for first with Canadian Hall of Famers John Stewart Morrison and Maurice Fox.

Eastman learned chess at 16 and his interest accelerated after he won a chess set and book in a puzzle competition. On his first visit to a club he finished third in a blitz tournament. He played regularly with future Grandmaster Gösta Stoltz [*Chess Review* August 1949]. In 1923 he finished sixth in a 150-player tournament and tied for first in section 2 of the Swedish Championship [*Evening Telegram* Mar 21, 1925].

Shortly after arriving in Toronto Eastman married [ancestry.ca] and worked as an artist downtown [*Might's City Directory*], near the Toronto Chess Club at Church and Adelaide. He made his first mark in Canadian chess by playing the Nimzowitsch Defence against Alexander Alekhine in a simul and drawing (reported in the *New York Times*).

Today's databases only have a couple of his games outside of the 1924 Dominion Championship and the 1951 US Open. I've found over fifty of his games in the *Evening Telegram* Saturday chess column by Malcolm Sim. Eastman was likely influenced by the hypermodern style of Richard Réti. His tactical style crushed weaker players, but grand attacks often got him into time trouble with the better players.

The 1924 Dominion Chess Championship was in Hamilton in August. The residency clause was amended to let in the strong newcomers, Eastman and Maurice Fox. Fox had arrived in Canada from England in December 1923. Canadian Champion Morrison was ranked 22 in the world in 1920 www.chessmetrics.com. Morrison successfully defended his title, winning \$100, by defeating Fox on time; Fox disputed the ruling, was upset and lost his last-round game that evening. The time control was 30 in 2, 15 in 1, rounds at 1 and 7 pm.

So Fox dropped to second and Eastman tied for fourth [full cross-table at www3.telus.net/public/swright2/canchs1.html]. Eastman won the 1925 Toronto Championship ahead of Maurice A. Levy and the two tied for first in the Toronto Chess Club Championship. Eastman had a good record defeating visiting masters in simuls, including Géza Maróczy, and rarely lost when giving simuls himself. Eastman also scored well playing on Toronto teams against Hamilton and Buffalo.

In the 1926 Toronto Championship Eastman lost his first-round game to Sydney E. Gale, 1920 Canadian Champion, but came back to tie Gale for first and won the playoff.

Levy,Maurice - Eastman,George [E90]

Tor-ch Toronto (4), 03.1926

1.d4 Nf6 2.c4 g6 3.Nc3 Bg7 4.Nf3 0-0 5.e4 d6 6.Qd3 Nc6 7.a3 Bg4 8.Be3 e5 9.d5 Nd4 10.Be2 Nxe2 11.Qxe2 Nh5 12.h3 Bxf3 13.Qxf3 f5 14.0-0 f4 15.Qd2 a6 16.b4 Nf6 17.Kh2 h5 18.g3 g5 19.gxf4



19...g4! 20.Qd3

Sim: Finely played. If 20.hxg4 Nxg4+ 21.Kg1 Qh4 22.Qg2 exf4 and Black soon gets all his forces to the attack.

20...exf4 21.Rae1

Sim: 21.Qxf4 Nxe4 22.Qxe4 Rxf4!

21...Nd7 22.f3 Ne5 23.Qe2 Qh4 24.fxg4 f3 0-1

Sim: After the queen moves to safety, mate in three follows (25. Qd1 Nxg4+ 26. Kg1 Qg3+ 27. Kh1 Qg2#). A faultless game by Eastman.

Before the 1926 Dominion Chess Championship in Montreal Sim wrote, "Eastman is in a determined mood and has been using the midnight oil over textbooks." Eastman drew Morrison and Fox, but fell for a back rank trick by Gale. Fox also lost to Gale but Gale lost to Morrison and Morrison lost to Fox. In the end Morrison came out on top, 10.5, then Fox, 10, Eastman, 9.5, and Gale 9.

In the 1927 Toronto Championship Eastman again lost his first-round game to Gale and soon after was rushed to the hospital for an appendix operation. At the end of the tournament Eastman still had four adjourned games to complete and he caught up to Gale, who had lost to Major Charles Blake. The event was reported on in Winnipeg's new *Canadian Chess Review* and in the *British Chess Magazine*.

In the 1927 Jubilee Confederation Chess Championship in Toronto Morrison defeated both Fox and Eastman but lost to two others. Fox also defeated Eastman and won his first of eight Canadian Champion titles. Eastman was third, Levy fourth. From the times given in the newspaper, despite the time control of 40 in 2, the average length of games was a fast 36 minutes for the 32 out of 42 games that didn't get adjourned.

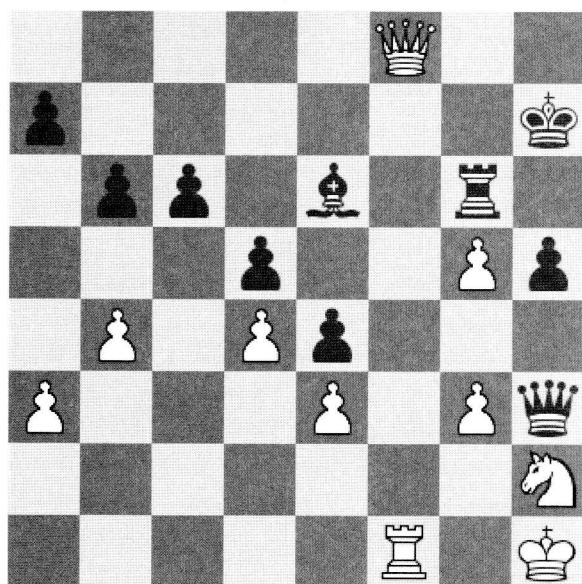
In the last round of the 1928 Toronto Championship Eastman played the Falkbeer Counter Gambit against Gale and lost, finishing second by half-a-point. Strangely the *Evening Telegram* named the winner as "S. Winawer," the name of the Polish master who died in 1920; Perhaps Gale didn't want somebody to know he was in town?

The 1929 Toronto Championship saw probably the strongest field in a Toronto Championship until 1970, containing six past/future Canadian Champions: Morrison, Blake, Gale, Martin, Belson, and Blumin. In the playoff Eastman defeated Morrison winning an actual gold medal. His photo was published in both the *Evening Telegram* and *Globe*. Morrison predicted that Eastman would be the next Dominion Champion.

Morrison, Stewart - Eastman, George [D51]

Tor-ch playoff Toronto (1), 23.04.1929

1.d4 d5 2.Nf3 Nf6 3.c4 c6 4.Nc3 e6 5.Bg5 Nbd7 6.a3 Be7 7.e3 Ne4 8.Bxe7 Qxe7 9.Bd3 f5 10.0-0 0-0 11.Qc2 Qf6 12.Rad1 Kh8 13.cxd5 exd5 14.b4 b6 15.Ne2 Bb7 16.Nd2 Qh6 17.f4 Ndf6 18.Rf3 Ng4 19.h3 Ngf6 20.Ng3 Nh5 21.Nxh5 Qxh5 22.Bxe4 fxe4 23.Rf2 Rf6 24.Nf1 Raf8 25.Nh2 Bc8 26.Qe2 Qh4 27.Kh1 g5 28.Rc1 h5 29.Rg1 Rh6 30.g3 Qxh3 31.fxg5 Rxf2 32.Qxf2 Rg6 33.Qf8+ Kh7 34.Rf1 Be6



35.Qe7+?

35.g4!

35...Rg7 36.Qf6 Bg4 37.Qh6+ Kg8 38.Qxc6 Bf3+ 39.Rxf3 exf3 40.Qxd5+ Rf7 41.Qa2 f2 0-1

The 1929 Dominion Championship in Montreal was dominated by Fox who defeated Eastman in the first round. Fox warmed up for the championship by playing in an international tournament in New York where he turned down a draw with Alekhine and lost.

In the 1930 Toronto Championship Eastman misjudged a queen sac against Robert Martin and lost. Eastman drew with Boris Blumin and they tied for first to go into a playoff: two games, if tied, another two games, and so on. Eastman finally won 5-3 with no draws! When the USCF started listing ratings in 1950 Blumin was 2351 and Eastman 2333, 23rd top player.

Blumin, Boris - Eastman, George [A56]

Tor-ch playoff Toronto (4), 05.1930

1.d4 Nf6 2.c4 e6 3.Nc3 c5 4.d5 d6 5.e4 e5 6.f4 g6 7.fxe5 dxe5 8.Nf3 Bg7 9.Bd3 0-0 10.0-0 Ne8 11.b3 Nd6 12.Bb2 f5 13.Qe2 f4 14.Na4 Nd7 15.Kh1 b6 16.Bc3 g5 17.Ng1 Nf7 18.Nb2 Nf6 19.Nd1 g4 20.Be1 Qd6 21.g3 Nh5 22.Nc3 Qh6 23.Qg2 Ng5 24.Rd1 Bd7 25.Rd2 Rf7 26.Be2 Raf8 27.d6 fxg3 28.Rxf7 Rxf7 29.Bxg3 Nh3 30.Nb1 N3f4 31.Qf2 31...Ne2! 32.Qe1 Nhxg3+ 33.Kg2 Qh3+ 34.Nxh3 gxh3# 0-1

In March 1931 Eastman had a rare simul loss to Boris Kostich. The newspapers also reported later in the year that at an international tournament Kostich, during a game, was found in the hallway looking at a pocket set. In the 1931 Toronto Championship Eastman lost his first-round game against John Harry Belson (Belczinsky) and in his second blundered in time pressure against Blumin. But Blumin unexpectedly lost the last-round adjournment against Belson, dropping to a tie with Eastman. A playoff series of two games again went to eight-games, Eastman winning games 7 and 8.

In 1931 the Dominion Chess Championship returned to the Royal Connaught Hotel in Hamilton. Early on Martin upset Fox, and Blake Morrison; So Eastman with four wins had the early lead. After the last round Morrison won an adjourned game with Eastman in 120 moves and 10 hours, giving Eastman his only loss. Eastman tied for first with Fox and Morrison, but Fox easily won the playoff. Fox ranked 84th in the world in 1931 by Chessmetrics and had a 2304 USCF rating in 1951.

In August 1931 Eastman played against Blumin in a living chess game, with actors as the pieces, at Hanlan's Point Stadium on the Island (The same place where Babe Ruth hit his first out-of-the-park home run as a professional). Blumin said it was like playing a blindfold game. After two hours it was a draw. Later Blumin moved to Montreal and won the Montreal Championship 1933-4-6-7, Dominion Championship in 1936-37 then moved to the chess hotbed New York City, many of his games published in *Chess Review*.

In October 1931 Eastman had a job offer in Cleveland and moved to the US, eventually settling in Kalamazoo, Michigan. Eastman won the Michigan State Championship eight times

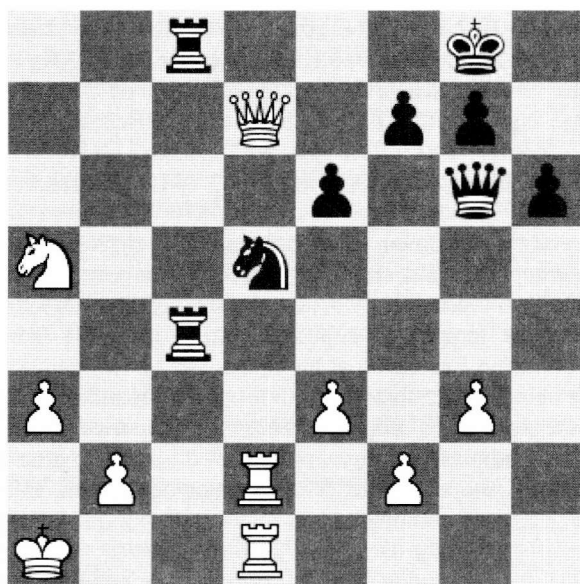
1933 to 1952. Leon Stolcenberg (from Austria) was his major rival, winning the Michigan Championship 13 times.

Eastman played in several of the annual Western Chess Association Championships, later renamed the US Open. In 1933 defending Champion Reuben Fine, 19 years old, lost a game to Samuel Reshevsky but still won; Eastman, with Black, finally defeated his old nemesis Fox. Here is his game against Dake.

Dake, Arthur - Eastman, George [E38]

Western-ch Detroit (9), 09.1933

1.d4 Nf6 2.c4 e6 3.Nc3 Bb4 4.Qc2 c5 5.dxc5 Bxc5 6.Nf3 Nc6 7.Bg5 h6 8.Bh4 0-0 9.e3 Be7 10.0-0 d5 11.cxd5 Nb4 12.Qb3 Nfxd5 13.Bxe7 Qxe7 14.Nxd5 Nxd5 15.Bc4 Nb6 16.Kb1 Bd7 17.Bb5 Bxb5 18.Qxb5 Nd5 19.Rd2 Rfc8 20.Rhd1 Rc5 21.Qa4 b5 22.Qa5 Rac8 23.Nd4 Qc7 24.Nb3 Rc4 25.Qxb5 Qxh2 26.g3 Qh5 27.Ka1 Qf5 28.Qd7 a5 29.a3 Qg6 30.Nxa5?



Sim: Of course 30.a4 Nb6; while 30.Rd3 would not serve against 30...a4 31.Na5 (31.Nd4 Nf6) 31...Rc1+ 32.Ka2 Qe4 (Computer: 32...R8c2!) Capturing the a-pawn costs Dake his Queen.

30...Rc1+ 31.Rxc1 Rxc1+ 32.Ka2 Qb1+ 33.Kb3 Rc3+ 34.Ka4 Nb6+ 35.Kb4 Nxd7 36.Kxc3 Qc1+ 37.Rc2 Qe1+ 38.Rd2 Nc5 39.Kc2 Ne4 40.Rd8+ Kh7 41.Nc4 Qxf2+ 42.Kb3 Qxg3 43.a4 Qc7 44.Rd4 Qb7+ 45.Ka3 e5 46.Na5 exd4 47.Nxb7 dxe3 0-1

In the 1934 Western Chess Association Championship in Chicago there were matches, an eight-game preliminary round-robin and a nine game final round-robin.

In the *Grand Rapids Herald* of August 26, 1934, Eastman was quoted "possibly the most grueling tourney in the world, as a result of the recent adoption of the Holland qualifying system. I, for one, wasted my best chess on the qualifying rounds in the mad scramble to reach the finals. A poor system! Practically all the finalists looked like somnambulists instead when they were ready to enter the final masters' tourney. I

believe I won the championship for producing the most yawns!"

In the final Eastman defeated the 20-year-old Denker but lost to the top three: Reshevsky, Fine and Dake. By 1950 Eastman had moved to the Detroit area, often winning the Detroit Championship, and played on the Swedish CC team in Chicago. He played in the 1950 US Open, now a Swiss, won by 20-year-old Arthur Bisguier. The top Canadians were Fox and Toronto Chess League Secretary Howard Ridout. An Eastman win was published in the *Los Angeles Times*. The 1950 US Speed Championship final, 10 seconds a move, was won by Larry Evans whose only lost was to Eastman. In the next year's Speed Championship Eastman again defeated Evans, finishing second; Fifth was Howard Ridout.

Eastman also played in the 1953 US Open in Milwaukee, a record 181 players, won by 23-year-old Donald Byrne. Toronto Champion Frank Anderson tied for third, but finished behind Eastman in a preliminary section of the US Speed Championship. Also entered was Sarnia's Phil Haley. George Eastman was made a Michigan Hall of Famer [www.michchess.org]. He died in Wayne, Michigan in 1975; His wife died in 1979.



GEORGE EASTMAN

Thanks for research help on finding US games from Andy Ansel, John Hilbert, Nick Pope and John Donaldson, and research in Sweden by Stig Johansson. ♣

Registration/Check-In
8:00AM - 8:45AM

Pre-Registration
Online
\$15



On-Site
Registration
\$20

HOLLAND JUNIOR OPEN SATURDAY, MARCH 24

Holland Christian High School • 956 Ottawa Avenue; Holland, MI 49423 • Phone: 616-929-8047

www.HollandChess.com/Tournaments.html



An Incredible Chess Venue



The Holland Chess Club invites all students in grades K-12 to compete in the second annual Holland Junior Open. This event includes rated & unrated tournaments. Online registration with secure PayPal payment gateway is available at <http://www.HollandChess.com/Tournaments.html> through March 23. On-site registration available for \$20/person. Please make checks payable to HollandChess.com.

Unrated Sections by Grade:

1. UNRATED PRIMARY (K - 2nd)
2. UNRATED ELEMENTARY (3rd - 6th)
3. UNRATED JUNIOR VARSITY (7th - 8th)
4. UNRATED VARSITY (9th - 12th)

The unrated tournament will be played in 5 rounds. Games will not be timed. However, after 20 minutes, a clock with 5 minutes per side will be added to remaining games. Round 1 – 9:00am, Round 2 – 9:40am, Round 3 – 10:20am, Round 4 – 11:00am (Lunch Break: 11:40am to 12:10pm), Round 5 – 12:10pm, Award Ceremony at 1:00pm.

Awards include: Trophies for 1st-3rd and medals for 4th-5th in each section. Bonus awards: Tournament chess set for 1st in each section, Holland Chess Academy semester membership for perfect score (5 wins).

Rated Sections by USCF Rating: USCF registration required.

1. LOWER DIVISION (Under 750 USCF)
2. UPPER DIVISION (750 USCF or above)

Tournament format is G/30 with 5-second delay. Notation required. BYOC (Bring Your Own Clock). USCF Registration available on-site.

Games will be played at 9:00am, 10:20am, 11:40am (Lunch Break: 1:00 - 1:15pm), 1:15pm, and 2:35pm. Award ceremony at 4:00pm.

Awards include: Trophies for 1st-3rd and medals for 4th-5th in each section. Bonus awards: \$20 for 1st & \$15 for 2nd in each section, Holland Chess Academy semester membership for perfect score (5 wins).

Chess Trivia Quiz, Part 3

Presented by Jennifer Skidmore

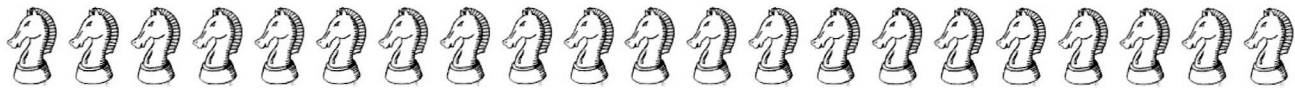
This was originally compiled by Ken Long, Seth Homa, Nate Solon, Michael Smith, and Jennifer Skidmore for the 2011 Knight Relocation Camp. We hope that the rest of the Michigan Chess community would enjoy this as well. Please submit your answers to jmscamelot@gmail.com. Those with perfect scores will be entered into a drawing for free entries to Friday Knight Quads.

This is the third in a six-part series for Michigan Chess - Editor

1. Which US Grandmaster once scored 11 wins, no losses, no draws in a US Championship?
 - a. Nakamura
 - b. Fischer
 - c. Reshevsky
 - d. Morphy
2. Aside from being the second rated chess player in the world, Magnus Carlsen is a model for what label?
3. FIDE President Kirsan Ilyumzhinov was "Head of the Republic" in what country, where he made chess mandatory in primary school?
4. Who is the current United States Chess Champion?
5. Name this opening: 1.c4
 - a. English Opening
 - b. Ruy Lopez
 - c. Scotch Game
 - d. Four Knight's Game
6. In which city did Bobby Fischer play his world championship match against Spassky?
7. After losing a game to miss first place in a tournament, Aron Nimzovich famously jumped on the table and screamed, "How can I lose to this idiot?" Who was the idiot?
8. Name this opening: 1.e4 e5 2.Nf3 d6
 - a. Pirc Defense
 - b. Elephant Gambit
 - c. Philidor's Defense
 - d. Reti
9. Which grandmaster lost on time after falling asleep at the board in a tournament in India in 2009?
10. Checkmate comes from the Persian phrase "Shah Mat" – what is the literal translation of this phrase?
11. What school is the reigning MI HS Team Championship winner?
12. The book and movie "Searching for Bobby Fischer" were about this chess prodigy.
 - a. Bobby Fischer
 - b. Hikaru Nakamura
 - c. Josh Waitzkin
 - d. Ben Finegold
13. What was the opening used in "The Immortal Game"?
14. Which chess grandmaster is now a Harvard University Professor?
15. Which James Bond movie featured a chess match?
16. What does Super-Grandmaster Magnus Carlsen like to drink during his chess games?
 - a. Orange Juice
 - b. Beer
 - c. Grape Juice
 - d. Martinis (shaken not stirred)
17. Who did Gary Kasparov challenge for political office in 2007?
18. Which schools are the reigning MI HS Team Reserve winners?
19. How many years did Emanuel Lasker hold the World Championship title?
 - a. Twenty-seven years
 - b. Ten years
 - c. Fifteen years.
 - d. Three years.
20. How many English words can be formed using the letters from "pawn"? ♗

Did you know???

The MCA supports player attendance at national and international events such as these. A portion of your yearly membership dues is used for this purpose. Donations are always welcome!



Okemos Scholastic Chess Tournament

Saturday April 21, 2012, 11:30 - 6:00 PM

Chippewa Middle School, 4000 Okemos Road, Okemos, MI 48864

(formerly Wardcliff Scholastic Tournament)

Open to students in grades K-8

Just For Fun----Not USCF Rated----Lots of Trophies---Beginners Welcome

(participation ribbon to all participants)

- 5 Rounds
- Time Control G-30 (each player has 30 minutes to make all of their moves)
- Play only students in your own grade (separate tournaments for each grade K-6)
- Grades 7-8 may be combined into one section, depending upon registration
- Trophies to all players who score at least 3 points (usually over 40% of the players get a trophy!!)
- Beginners encouraged to participate
- **Players in grades 6 and up need to bring boards and sets.** Younger players will be provided with boards and sets. All players should bring a clock if they have one. (Clocks are NOT required for this tournament).
- **Please bring "soccer mom" chairs for seating in the waiting area.** A few regular chairs will be available, and tables will be available.

Rounds are scheduled for 11:30, 12:45, 2:00, 3:15, and 4:30. Awards ceremony at 5:45.

Round times will be accelerated if all games have been completed.

Pre-Registration is \$10, on-site registration is \$20 from 10:00-11:00am. Tournament Director reserves the right to turn away anyone who is NOT in the registration line by 11am.

Group Discount—25% off if you register 5 or more players at one time!!

Lunch and Snacks will be available on site
Concession profits support the Okemos chess clubs

Please mail this Registration Form to: Okemos Chess Club, c/o Central Elementary School, 4406 Okemos Road, Okemos, MI 48864, or email to webmaster@lansingchess.com. (Email entries are not officially accepted until payment is received)

Make checks payable to: Let's Play Chess

For more info, contact: Bruce Roth, 517-351-4106 (evenings) or go to lansingchess.com.

Name _____ Grade _____ Rating (if known) _____ School _____

Address _____ City/Zip _____ Phone _____

Email _____

(fill this in if you want email confirmation that your registration has been received)

Michigan's Early Chess History

By Bruce Roth

These are excerpted from Michigan Chess Magazines of 1949. A special thanks to goes to Virginia Vandenburg for discovering these "treasures".

The first issue of the "Michigan Chess Association Bulletin", what we now call Michigan Chess Magazine, was published in May, 1949. The "printing" process was a "Ditto" machine. For those of us over 50, we remember those worksheets in Elementary School with the purple printing and the chemical smell, in the days before Xerox copiers and computers that had printers. The magazine had 7 pages plus an orange cover, and of course was printed only on one side, as ditto machines could not print on 2 sides very easily without smearing the ink.

The editor of the magazine was Grant Turnblom, a graduate student at Michigan State College (now MSU). The person responsible for the printing and mailing was MCA president V.E. (Van) Vandenburg. For those of you who are new to Michigan chess, or too young to know who Mr. Vandenburg was, he started the Lansing Chess Club in 1944, was the long time MCA president and magazine editor, still played chess regularly at the Lansing Chess Club and at the Lansing Mini Swisses when he was close to 100 years old, and died in 2008 at the age of 104! The Lansing Chess Club sponsors the annual Vandenburg Cup in his honor.

The feature story in this issue of the magazine was the first ever state championship in the "swiss" style, held at the Detroit Northeastern YMCA, on Cadillac at Harper and Gratiot. The magazine stated "in the past, entries were restricted to one player from each club, and this has dwindled down to championships with only 8-12 players.

It is hoped that there will be at least a half hundred players entered". (A later issue stated that they actually had 40 players).

Van was one of the pioneers of the swiss tournament, along with renowned tournament organizer George Koltanowski. This tournament would also "determine a junior champion of Michigan, for the first time. However, there will be no separate tournament. Juniors will play right along with everyone else, and will probably show up a lot of adults. The player who enters the tournament under 19 years of age on June 25 and who finishes highest at the end of the tourney will be declared the junior champion of Michigan and awarded a suitable trophy." (A later issue stated that the overall champion was George Eastman, and the junior champion was Norman Zemke).

This first MCA magazine also featured a game played and annotated by Larry Evans, who was listed as "New York State Champ" (He later became a grandmaster, long time Chess Life columnist, and very close friend to Bobby Fischer). There was also a problem page, which did not have answers, but instead encouraged readers to "send a postcard to the editor with the answers. Small book awards are planned for the winners". And does this sound familiar?? The 2nd issue was put out by Van in June, 1949, mostly as a reminder of the upcoming tournament. And then the magazine did not publish again until December, 1949, when Van stated: "After a fine start, the magazine came to an abrupt halt when the magazine lost its editor, who is now at Columbia University on a scholarship". Although this is the last issue of the three that Virginia provided, I suspect Van became the editor of the magazine at this time, and remained its editor for many years. ♘



West Michigan Chess

- *User Database*
- *Annotated Games*
- *Opening Articles*
- *Tactics Puzzles*
- *Player Interviews*
- *Improvement Contest*
- *Scholastic Focus*
- *Event Calendar*
- *Thematic Tournaments*
- *Informative Blogs*

PLEASE VISIT!

<http://www.westmichiganchess.com>

ALL THE KING'S MEN CHESS AND BRAIN GAMES, INC.



An INVESTMENT in your FUTURE...an INTERNATIONAL Language!



27170 DEQUINDRE ROAD, WARREN, MICHIGAN 48092 → (586) 558-4790 • (586) 558-2046 (Fax)

◆ Home of the UNIVERSAL CHESS CLUB ◆



2012 ANNUAL WEINER-RUBENSTEIN MEMORIAL SWISS
5-SS • \$1,200 PRIZE FUND!!
MARCH 31-APRIL 1, 2012



Site: All The King's Men Chess and Brain Games, Inc.

27170 Dequindre Road, Warren, MI 48092 • (586) 558-4790

Directions: We are in the PARKVIEW SQUARE Strip Mall, directly behind the SUBWAY RESTAURANT. The Mall is located on Dequindre Road just North of 11 Mile Road, which is 1 1/2 miles East of I-75 (11 Mile Road Exit) and 3/4 of a mile North of I-696 (Dequindre Road Exit) in the City of Warren, MI.

For maps, see: <http://www.yahoo.com> or <http://www.mapquest.com>

Format: 5-SS. USCF and MCA Memberships Required (can be purchased on site). Up to TWO 1/2-point byes available; must be requested prior to start of RD 3. PRIZE FUND: \$1,200 (b/36).



HEADPHONES cannot be used if opponent objects for any reason. Player must be willing to present same to TD's for examination at any time. Failure to do so will result in removal from tournament without refund. CELL PHONES must be turned off or in silent mode while in tournament room.

Time Control: G-90

Rounds: Sat, March 31st: 12:00, 3:30, 7:00 PM. Sun, April 1st: 11:00, 2:30 PM

Entry Fee: \$50 (\$40 for Oage 64, Uage 16 or UNR) by Tues., March 27th; Add \$10 After. IMs and GMs FREE (\$50 Entry Fee deducted from prize). NO RE-ENTRIES ALLOWED.

Registration: Sat, March 31st: 10:00-11:30 AM

Prizes: PRIZE FUND \$1,200 (b/36; b/min. 6 per prize section): \$300 for 1st; \$200 for 2nd; \$175 each for TOP: 1800-2099; 1500-1799, 1200-U1499, U1200/UNR. UNR eligible ONLY for Unrated or Overall prizes.

\$50 GIFT CERTIFICATE FOR BIGGEST UPSET OF TOURNAMENT!!

Entries/Info: Dr. Ed Mandell

All The King's Men Chess and Brain Games, Inc.

27170 Dequindre Road, Warren, MI 48092

(586) 558-4790 - Fax: (586) 558-2046

allthekingsmench@aol.com • <http://www.allthekingsmenchess.com>

Michigan Chess Clubs

To update or add a listing, please email michessmag@gmail.com

Ann Arbor, Garden Market Cafe

Wednesdays 6:00 PM - 10:30 PM (Regular Club)
Garden Market Cafe, Huron Towers, 2200 Fuller Court Jennifer Skidmore e-mail: jmscamelot@gmail.com

Special events listed on the MCA tournament calendar

Bay City Chess Club Tuesdays, 8:00 AM - 4:00 PM

Bay City Mall food court, 4101 E. Wilder Rd.

Mike Snobeck (989) 686-8001

Benton Harbor, Solid Grounds Cafe Chess Club Thursdays 6:30 - 9:00 PM

Solid Grounds Cafe, 124 Water Street, Benton Harbor, MI 49022 "in the Arts District"

Carl Brecht e-mail: carlbrecht@netscape.net

All ages welcome! Hours of cafe for play anytime at www.Solid-groundsCafe.com

Cadillac Chess Club Wednesdays, 6:00 - 10:00 PM

Horizon Books, 115 S. Mitchell

Terry Oss (231) 775-6143 or Duane Croel (231) 885-1249

Canton, Carrel Chess Club Thursday 6:00 - 9:00 PM, and as needed for tournaments

Westland Library, 6123 Central City Parkway, Westland, MI 48185

Michael Carrel (734) 377-4907

<http://carrelchessclub.webs.com/>

Dearborn, Ford Chess Club NEWLOCATION! Tuesdays 5:00 - 8:00 PM

Ford Motor Co World Headquarters Cafeteria

North Entrance, Michigan Av & Southfield Fwy

Norm Haygood (248) 366-0954

George Oprean (586) 756-4967

e-mail: nhaygoodjr@aol.com or Archangel365@comcast.net

Detroit City Chess Club Fridays 5:00 - 9:00 PM

Detroit Institute of Arts (DIA), 5200 Woodward Ave., Detroit, MI 48202

Kevin Fite kevin@fite.com

Sherman Redden (313) 657-2268

redden@detroitcitychessclub.com

<http://www.detroitchessclub.com>

East Lansing Chess Club Fridays, 10:00 AM - 3:30 PM

East Lansing Seniors' Program, 819 Abbott Road karndt@ci.east-lansing.mi.us (517) 337-1113

Mervin J. Draper e-mail: pjdbad@aol.com

pjdbad@aol.com

Elkhart County Chess Club Tuesdays 7:00 - 10:00 PM

First Congregational Church, 3rd & Marion St. in downtown Elkhart, IN ~ 7 miles south of State line

Roger Blaine (574) 257-9033 e-mail: reblaine@hotmail.com

Genesee County Chess Club (Flint) Tuesdays 6:30 - 9:30 PM

Eastside Senior Citizens Center Activity Room, 3065 N. Genesee Rd Flint, MI 48506

Jeff Aldrich (810) 955-7271

e-mail: jeffchess@charter.net

Grand Rapids Area Chess Club Tuesdays 7:00 - 10:00 PM

Common Ground Coffee, 1319 Fulton E, Grand Rapids

Katy Ford (616) 240-0832

e-mail: katymford@sbcglobal.net

Greenville Chess Club Thursdays 6:30 - 8:30 PM

Greenville Area Community Center, 900 East Kent Road

Robert Wilson (616) 754-9163 e-mail: gacc@oneisp.net

All levels welcome. No cost to participate. Come have fun!

Grosse Pointe Chess Club Tuesdays, 7:30 - 10:00 PM

Downtown Borders, 17141 Kercheval St., north of Cadieux

Tim Kuhn (313) 884-0118 e-mail: timkuhn@yahoo.com

Calvary Knights Chess Club Saturdays 2:00 - 5:00 PM

Calvary United Methodist, 15010 North Holly Road, Holly, Michigan 48442

David Crutcher (248) 942-4904

e-mail: dcrutche@hotmail.com

<http://calvaryknights.webs.com/>

Holland Chess Club (interschool scholastic chess club) Saturdays, 9:30 - 11:00 AM

Eagle Crest Charter Academy, 11950 Riley Street, Holland

David Posthuma (616) 283-7703, davep@echurchessential.com

Website: www.hollandchessclub.com

Jackson Chess Club Thursdays 7:00 PM

Cottage Inn Pizza, 1208 W. Michigan Ave.

Lineas Baze (517) 788-6324 e-mail: zalmon@prodigy.net

All ages and ratings welcome, from novice to expert. No dues or fees for membership. Rated and unrated games available.

Kalamazoo Chess Club Sundays, 3:00 PM

Bigby's Coffee Shop, 6800 S. Westnedge Ave., Portage, MI, 49002 Tim

McGrew e-mail: timothy.mcgreg@wmich.edu

Kalkaska, Cherry Street Elementary Chess Club Wednesdays, 3:00 - 4:00 PM

Cherry Street Elementary, 315 South Cherry Street

Rich Hilts e-mail: wizerman@hughes.net website:

www.mrhiltsclass.com/chess_club.htm

Kentwood Chess Club

Hours of the bookstore: 9:00 a.m. - 10:00 p.m. Mon-Sat 10:00 a.m. - 7:00 p.m.

Sun. Schuler Books & Music 2660 28th Street SE Grand Rapids, MI 49512.

It meets in the café area on Tuesday's, Wednesday's, and Friday's from 6pm-10pm.

Antowine Jordan e-mail: pilot_cougar_chess@live.com

Lansing Chess Club Wednesdays, 6:00 - 10:00 PM

Room 127, LCC Technology and Learning Center, NE corner of Capitol and Shiawassee.

Tuesdays, 6:00 - 8:00 PM

Gone Wired Cafe, 2021 East Michigan Avenue

David Sundeen (517) 394-8080

Tony Nichols e-mail: sensie48910@yahoo.com

<http://www.lansingchessclub.blogspot.com>

Livingston County Chess Club Mondays, 6:00 - 10:00 PM in Howell at the Hartland Senior Center, 9525 E. Highland Rd (M-59), Howell, MI 48843, ¼-mile west of US-23.

Ken Lamb (810)-599-4134 or Matt Trujillo (810)-225-3000

website: <http://www.livingstoncountychessclub.blogspot.com/>

Email at livingstoncountychessclub@hotmail.com or lcchess@yahoo.com

Livonia Chess Club Wednesdays 12:00 - 5:00 PM

Senior Citizens Bldg, SE Corner of Five Mile Rd & Farmington Rd.

George Geominne

e-mail: geologoe@twmi.rr.com

Bob Mekus (313) 592-1450

Marquette Chess Club Thursdays 7:00 PM

Masonic Building, 128 West Washigton Street.

Tom Hogan (906) 869-1719

Mesick Public Library Chess Club Thursdays 3:00 - 5:00 PM

207 North Eugene Street, Mesick, MI 49668

Greg Bailey or Duane Croel (231) 885-2604

Midland Chess Club Mondays 7:00 PM (September through May)

Midland High School Room 245, 1301 Eastlawn

John Warner (989) 839-8290

Muskegon Chess Club Mondays and Thursdays, 7:00 - 10:00 PM

Barnes & Noble Bookstore (in cafeteria), 5275 Harvey St., Muskegon, MI

Steve Dumas (231) 798-2968

e-mail: stevedumas1@comcast.net

Minimum age: 10

Oak Park Chess Club Thursdays 6:30 - 10:30 PM

Oak Park Community Center, 14300 Oak Park Blvd. (9.5 Mile, west of

Coolidge) (248) 691-7555

Petoskey Chess Club Tuesdays 7:00 - 10:00 PM

Horizon Books, 319 E. Mitchell St., Petoskey

Dave Mitchell (231) 548-1478

Port Huron Chess Club Thursdays 6:30 - 10:00 PM (except holidays)

Palmer Park Recreation Center, 2829 Armour St, Port Huron, 48460

Lon Rutkofske (810) 388-9219

e-mail: ishking@aol.com

Website: <http://porthuronchessclub.yolasite.com/>

Redford Chess Club Fridays 2:30 - 4:30 PM

Thurston High School, 26255 Schoolcraft

Eric Nelson (313) 535-4000 x1110

e-mail: nelser01@southredford.net

Saint Clair Saturday Chess Club Saturdays 9:00 AM - 12:00 PM

Burger King, Corner of Clinton and River Road

Jaime Chan (810) 326-3745

e-mail: jaime@saturdaychess.com

Website: www.saturdaychess.com

Saint Joseph Chess Club Wednesdays 6:00 - 8:00 PM

Saint Joseph Public Library, 500 Market St.

Tony Palmer (269) 982-5128

Sault Ste. Marie, Sugar Island Chess Klub Thursdays 7:00 PM
Hilltop Bar, 5389 E 1 1/2 Mile Road, Sugar Island
Glen Schmiede (906) 635-5791, e-mail: gschmiede@nodinwifi.com
South Bend Chess Club (Indiana) Thursdays 7:00 - 10:00 PM
Meijer Store, 5020 Grape Rd, Mishawaka, IN ~4 Miles south of State line.
Grape Rd 1/4 Mile South of Douglas Rd.
Roger Blaine (574) 257-9033
e-mail: reblaine@hotmail.com

Spring Lake District Youth Chess Club (Ages 8-18) 2nd Monday 4:00 - 5:30 PM

Spring Lake District Library, 123 E. Exchange Street
Lisa Donner: (616) 846-5770 x107

Taylor, Downriver Chess Club

Sundays 3:00 PM to close

Fuddrucker's Restaurant, 14680 Pardee

Terrence Price (734) 462-1181 e-mail: tepace24@hotmail.com

Troy Chess Club (casual chess) Thursdays 6:30 - 10:15 PM

Troy Community Center, 3179 Livernois Ave., Troy (248) 524-3484 (I-75 exit 69, east on Big Beaver Rd 1/4 mile to Livernois. U-turn. 1 Block N of Big Beaver, W. of Livernois.) Don Mailing: (248) 391-2940

Troy Youth All-Star Chess Club Saturdays 3:00 - 5:00 PM

Troy Community Center -3179 Livernois Road, Troy, MI 48083

The club is open to any K-12 students who are interested in improving his/her chess skills. Come in and have fun!

Club information: <http://games.groups.yahoo.com/group/TYASCC/>

Feng Zhong, xyzf99@yahoo.com (248) 825-6192

Chris Hausner, chausner_mi@yahoo.com (313) 575-5617

Traverse City Chess Club Wednesdays 6:00 - 11:00 PM

Horizon Books, 243 E Front St, Traverse City

Joe Revnell (231) 633-1323

Universal Chess Club Mondays - Saturdays 12:00 - 6:00 PM, Sundays 12:00 - 5:00 PM

27170 Dequindre (just north of 11 mile in Parkview Square strip Mall, around back)

Ed Mandell (586) 558-4790

e-mail: allthekingsmench@aol.com

Website: www.allthekingsmenchess.com

All Ages/strengths welcome! Sets provided; clocks for rent. Snacks & beverages are available.

Michigan Chess Tournament Calendar

March-May 2012

All events require USCF and MCA memberships, and are No Smoking, No Computers unless otherwise stated. Memberships can be purchased at any tournament. Other state memberships are acceptable for non-Michigan residents. Please send your tournament announcements via e-mail to jeffchess@charter.net.

PLEASE NOTE! Events listed are a service of MCA. MCA is in no way responsible for cancellations or changes. Be sure to always contact your organizer!

UPCOMING MARCH 2012 TOURNAMENTS

March 2 FRIDAY KNIGHT ACTION QUADS #56

2200 Fuller Court, Ann Arbor Garden Market Café (located main floor Huron Towers). Come early and buy dinner in the café. Quads by rating.

3-RR G/30 REG: 6:30-6:45PM RDS: 7:00, 8:00, 9:00PM

EF: \$5 \$\$: \$16 per quad.

ENT&INF: Jennifer Skidmore 734-678-0463, jmscamelot@gmail.com

March 3-4 UNIVERSAL LATE WINTER SWISS

See page 6 of this issue for details!

March 11 LANSING'S JANUARY MINI-SWISS

Room 127, LCC Technology and Learning Center Corner of Capital and Shiawassee Lansing, MI 48933

3-SS G/90 REG: 9:00-9:45AM RDS: 10:00AM, 1:30PM, 4:30PM

EF: \$21. \$\$: 1st \$75 2nd \$48 each sect. \$100 to 3 pt. score in section of 8+ players.

ENT&INF: Tony Nichols, sensie48910@yahoo.com

March 17-18 2012 MICHIGAN JUNIOR CHESS CHAMPIONSHIPS

See the back page of this issue for details!

March 20 GENESSEE COUNTY CHESS CLUB ACTION QUADS

Eastside Senior Citizens Center Activity Room 3065 N. Genessee Rd, Flint, MI 48506. South entrance off Genessee Road near Richfield Rd. One game per week.

3-RR G/30 (25td5) REG: 6:00-6:25PM RDS: 6:30, 7:30, 8:30PM

EF: \$5 \$\$: \$15 1st in each quad.

ENT&INF: Jeff Aldrich (810) 955-7271, jeffchess@charter.net

March 24 HOLLAND JUNIOR OPEN

See page 17 of this issue for details!

March 25 Library Chess Clubs Action Quads

Canton Public Library, 1200 South Canton Center Road, Canton, MI

The Library is located in the "Canton Municipal Complex" on the West side of Canton Center road south of Cherry Hill.

3-RR G/30 (25td5) REG: e-mail mrwiz.usa@gmail.com or ClubChess@wowway.com. RDS: 1:00, 2:30, 4:00PM ALL GAMES MUST BE COMPLETED AT 5:00PM!

EF: \$5 \$\$: \$15 1st in each quad.

ENT&INF: mrwiz.usa@gmail.com

March 25 UNIVERSAL UNRATED BEGINNERS OPEN

27170 Dequindre (just north of 11 mile in Parkview Square strip Mall, around back). Open to Unrated or U800 players. No memberships required! This is a

very good opportunity to win membership in the USCF or MCA! These memberships are required in order to play in rated chess tournaments sponsored by the USCF! WIN YOURS!

4-SS G/25 REG: 11:30AM-12:45PM RDS: 1:00, 2:30, 3:30, 4:30PM

EF: \$20 \$\$: 1st USCF Membership; 2nd & 3rd MCA Membership. Equivalent alternative prizes for active members.

ENT&INF: Ed Mandell (586) 558-4790

e-mail: allthekingsmench@aol.com

Website: www.allthekingsmenchess.com

March 31 THINKERS CHALLENGE 5 WSG GM GREGORY KAIDONOV

Ford-UAW Building, 151 West Jefferson Avenue, Detroit, MI. Rated Sections Open, U1200, U900, U600. Unrated Sections: K-1 (open to both rated and unrated players), 2-3, 4-6, 7-12, Adult.

4-SS G/45 REG: 7:30-8:30AM with Players Meeting (all competitors must attend!) at 8:30AM. First round starts around 9:00AM. The event will finish around 4:45PM. EF: \$15 by Thursday before the tournament, \$20 at the door (cash or certified money order)

\$\$: Trophies to Top Five finishers in each scholastic division, Adult Section - Prizes to top two finishers.

ENT&INF: Tom Nelson 7354 S Quince Court, Centennial, CO 80112 (303) 880-4332

E-mail: weplaychess@comcast.net

March 31-April 1 2012 ANNUAL WIENER-RUBENSTEIN MEMORIAL SWISS

See page 21 of this issue for details!

UPCOMING APRIL 2012 TOURNAMENTS

April 14 UNIVERSAL ACTION! SWISS

27170 Dequindre (just north of 11 mile in Parkview Square strip Mall, around back). \$600 prize fund overall (b/32, min. 6 per prize group)

5-SS G/30 REG: 10:00-11:30AM RDS: 12:00, 1:45, 3:00, 4:15, 6:00PM

EF: \$25 by April 10, add \$10 after. IMs and GMs FREE (EF deducted from prize). \$\$: 1st \$200, 2nd \$100, \$75 for Top U2000, U1700, U1400, U1100/UNR (UNR eligible only for TOP or UNR prizes).

ENT&INF: Ed Mandell (586) 558-4790

e-mail: allthekingsmench@aol.com

Website: www.allthekingsmenchess.com

April 15 VANDENBURG CUP

Room 127, LCC Technology and Learning Center Corner of Capital and Shiawassee Lansing, MI 48933 Two Sections: OPEN and RESERVE U1800

4-SS G/60 REG: 8:30-9:20AM RDS: 9:30AM, 11:30AM, 2:15PM, 4:15PM

EF: \$30 in advance, \$40 on site.

\$\$: Based on 60 players. Each Section: 1st \$150 plus Trophy. 2nd \$74 plus Trophy. Class Prizes: X, A, C, D/UNR 1st \$50 plus Trophy, 2nd \$24. 1st Women's \$50

ENT & INF: To pre-register send entry fee (make checks out to David R. Sundeen) together with your name, address, Phone #, e-mail (if available)

USCF ID# and expiration date to David R. Sundeen, 5340 Ella's Ct, Lansing, Michigan 48911. For more information contact David at (517) 394-8080 or sundeeng@msu.edu.

April 24 OKEMOS SCHOLASTIC CHESS TOURNAMENT

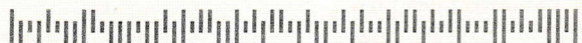
See page 19 of this issue for details!

MICHIGAN CHESS ASSOCIATION
PAUL KANE
P.O. BOX 970027
YPSILANTI, MI 48197

NON PROFIT
 ORGANIZATION
 U.S. POSTAGE PAID
 Flint, MI
 Permit No. 39

RETURN SERVICE REQUESTED

TIME DATED MATERIAL PLEASE EXPEDITE



TYPE: M EXP: 8/31/2012
 JOHN NELSON WARNER
 1005 SCOTT ST
 MIDLAND MI 48642-4709

The 2012 MICHIGAN JUNIOR CHESS CHAMPIONSHIPS.

March 17-18, 2012

ALL JUNIOR EVENTS: MSU UNION, Michigan State University
 Abbot @ Grand River E. Lansing, MI 48824

ENT&INF: **Michael Smith** P.O. BOX 8064 Ann Arbor, MI 48107. (734) 625-5057.
 e-mail: redwing_85@hotmail.com

2012 MICHIGAN JUNIOR CHAMPIONSHIPS ENTRY FORM

EVENT: (Circle)

- Young Children's Championship K-3 Young Children's Reserve K-3 U300
 Children's Championship K-5 Children's Reserve K-5 U600
 Young Junior Championship K-8 Young Junior Reserve K-8 U800
 Junior Championship K-12 Collegiate Children's Sponsors OPEN Junior Sponsors OPEN

Name: _____ Coach : _____ School: _____
 Address: _____ City: _____ Zip Code: _____
 Grade: _____ Phone: _____ USCF ID _____ Rating: _____
 Entry Fee: \$ _____ see chart. MCA membership \$ _____ MCA \$10 / \$15 w/ Magazine/ \$25 family AND
 USCF \$ _____ (under 25 yrs.) \$25 /\$33 w/mag (under 16 yrs.) \$21/\$28 w/mag (under 13 yrs.) \$17/\$24 w/ mag Total: _____

(Players purchasing memberships just prior to the event should bring receipt with Affiliate Name & ID, Date of Purchase, and Name of Seller, or they may be required to purchase memberships on-site.)

Do not send cash. Make check or money order payable to Michigan Chess Association

Event	Junior Championship	Young Junior Championship	Young Junior Reserve	Children's Championship	Children's Reserve	Young Children's Championship	Young Children's Reserve	Children's Sponsors	Junior Sponsors	Collegiate	
Grade	K-12	K-8	K-8 U/800	K-5	K-5 U/600	K-3	K-3 U/300	OPEN TO ALL		College	
Date	3/17 - 3/18	Sunday March 18th			Saturday March 17th			Saturday	Sunday	Saturday	
Check-in	8:30-9:30am	ALL SECTIONS. NO ON-SITE REGISTRATION MANDATORY CHECK-IN					7:30 - 8:30 am				8:30-9:30
Round Times	Sat. 10 - 2 - 6 Sun. 10 - 2	FIVE ROUNDS ALL COMPETITORS PLAY ALL FIVE ROUNDS. 9 - 11 - 1 - 3 - 5					10 - 12:30 - 3:30				10 - 2 - 6
TL	40:90 SD 30	TIME CONTROL FOR ALL ROUNDS IS G/60 or G/55 5 second time delay. EACH PLAYER HAS AN HOUR FOR THE GAME.									40:90 SD 30
Entry	\$15 Advance by 3/9/12 All mailed entries must be postmarked by 3/9/11					\$25 Advance by 3/15/12 NO ON-SITE REGISTRATION FOR ALL SECTIONS. Online entry form available at http://www.michess.org					
Memb	Michigan Chess Association and USCF Memberships Required					MCA only		MCA and USCF Required			
Awards	top 5 top 3 Gr 9u-12 Scholarships: 1 st \$500 2 nd \$250	top 5 top 3 Gr 6u-8	top 5	top 5 top 3 Gr 4u-5	top 5	Top 5 top 3 Gr Ku-3	top 5	top 2		top 2 Scholarship 1 st \$150	

Hotel:
East Lansing Marriott at University Place
300 MAC Ave.
E. Lansing, MI 48823
517-337-4440 (ask for chess rate)

MI Denker rep: top finisher in K-12
(Denker rep must be in grades 9-12)
MI Barber rep: top finisher in K-8
Denker and Barber tournaments held
with U.S. Open in Vancouver, WA