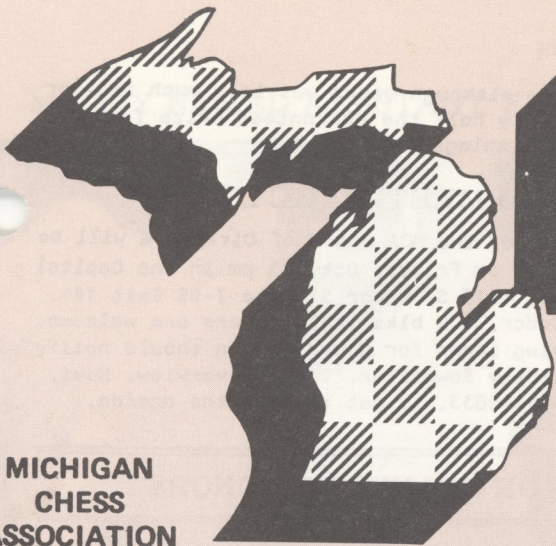


MICHIGAN
CHESS
ASSOCIATION

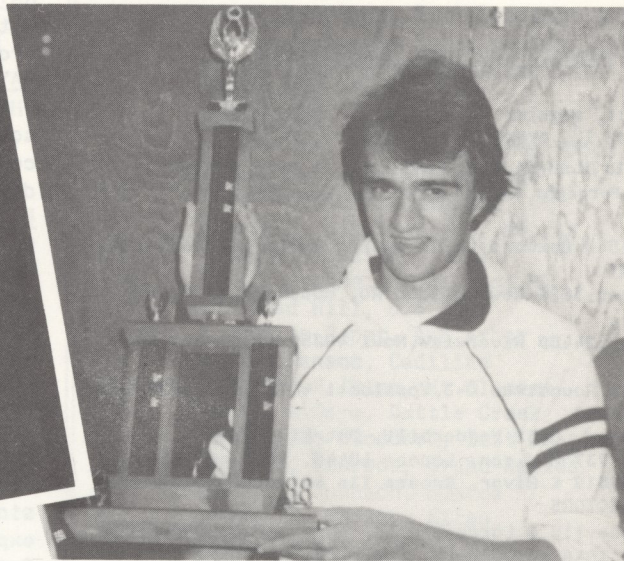


MICHIGAN CHESS

Price \$2.00



Jim Mikus, Mich. Reserve Champ



John Wygrecki, Michigan Champion

1988 MICHIGAN OPEN

Ray Stone of Windsor, Canadian master (2436), shown at right studying a game, topped 'em all without a loss (6 1/2) in the 1988 Michigan Open. A half point behind was John Wygrecki (2244), Detroit, now at U of M. As top state winner, he is the 1988 Michigan Champion. His only loss was to Stone. Jim Mikus (1777), Lapeer, took the Reserve section Michigan title in a 6 1/2 pt. tie with Paul Kolsti (1717), who won the tie-break and cash, but lost the title and trophy (he's from Texas). --Jim Kulbacki photos



Ray Stone, Open Winner

OCTOBER 1988

MICHIGAN OPEN BEATS OHIO?

Roger Blaine, president of the Ohio Chess Association, had nice words about the Michigan Open: "That news was astounding--214 at the Michigan Open!! You folks got 20 more players than the Ohio

Chess Congress, although yours was in a much smaller city and had only half the guaranteed prize fund. Funny how these things work."

MCA BOARD MEETING OCT. 21

Next meeting of the MCA Board of Directors will be in Lansing 7:30 pm Friday, Oct. 21 pm in the Capitol Federal bldg., 6510 S. Cedar St. Use I-96 Exit 104, W.1 blk to Cedar, S.2 blks. All members are welcome.

Anyone having items for Board action should notify Secretary Timothy Sawmiller, 24480 Riverview, Novi, Mich. (313) 344-9833, to get them on the agenda.

OUR THANKS TO DONORS

We acknowledge with thanks six more contributions to the MCA Fund Drive, received since our last report.

All contributions, any amount (none too small-- or too large) are welcome and needed. Here are the current donors, in order received:

RAYMOND P. MAYER, Ludington, joined MCA in 1982.

Not active in tournaments for some time. None around there. Thanks for helping us.

RAYMOND BURWELL, DETROIT (he said make it capitols. WHY?). Joined MCA in '82. Must be doing O.K. in some tournaments, for he is now up in Class A--and counting! Keep it up, and thanks that substantial donation. Keep that up, too! Please!

Lt. CHAD HILL, a 15 year MCA member, now lives in Beeville, Texas. He is an instructor in the U.S. Navy air force, having returned from flight service in the Philipines and Persian Gulf areas. He was 1976 Michigan champion and did mighty well in military service tournaments, too. Glad you are back, Chad, and glad you have a fine career--and a fine family. And thanks for another generous donation--your 10th! Great!

RUDOLF FRANKE, Washington (Michigan, that is. Don't blame him for any D.C.nonsense). He's been with us since 1973 and reached a high Class A rating (maybe expert). A donor for years, he has done it again. Our thanks again.

ANDREW BEIDER, Keego Harbor, is a well known former promoter of the Detroit Metro Chess League, plus he has a good rating--one of those experts who play like masters; almost won the Michigan Open one year. Some year he'll do it. Our thanks for the nice donation, Andy.

GREGORY E. BAILEY has moved to Cheboygan, where he is an insurance expert and by now a chess expert, too. As 1988 Michigan Amateur champ, he brings the area chess class. He did well in the Michigan Open but didn't do it often enough. One of these days, though... Thanks for the help, Gregg.

We urge all who can do it to contribute to our Fund Drive. Merely mail check marked "Donation" to MCA, 2177 Michigan, Eaton Rapids MI 48827. It's tax deductible.

Donors of \$25 or more (plus membership) to the MCA Fund Drive are listed for a year in Michigan chess as PATRON MEMBERS of the Michigan Chess Association. Many have contributed more than \$25 - and quite a few a lot more. Our special thanks to all for this badly needed and much appreciated help.



Published by Michigan Chess Association
2177 Michigan, Eaton Rapids MI 48827

February - April - June - August - October - December
Tournament dates bulletin mailed on alternate months

Phone (517) 646-6142

EDITOR V.E.Vandonburg
ASSISTANT EDITOR David Moody
POSTAL CHESS Dr. Christine Rosenfield
PROBLEM PICS Ransom Richardson
PRODUCTION ASSISTANT Fjola Vandonburg

MICHIGAN CHESS ASSOCIATION

Affiliated with U.S.Chess Federation

Membership; with Publications

| | 1 Yr. | 2 Yr | 3 Yr. |
|-------------------|-------|------|-------|
| Adult, regular | \$12 | \$22 | \$32 |
| Under 18, over 64 | 6 | 11 | 16 |

Payable to Michigan Chess Association at above address.
Foreign: add \$4. a yr. for postage

PRESIDENT

Gary Kitts, 1840 Boxwood Ln, E.Lansing 48823, (517)337-3031

VICE-PRESIDENT

Jeffrey L.Boes, 3826 New Holland Rd, Hudsonville 49426

SECRETARY

Tim Sawmiller, 24480 Riverview, Novi 48050, (313) 344-9833

TREASURER

Don Burg, 2955 Roundtree C-3, Ypsilanti 48197, (313)572-1335

ELECTED DIRECTORS

Jackie Branscum, 8432 Vanderbilt, Detroit, 48209

James Mikus, 737 Madison, Lapeer 48446, (313) 664-5650

Pete Nixon, 27519 E.River, Grosse Ile 48130, (313)676-2905

APPOINTED DIRECTORS

Michael Duwock, 116 S.Larch, Lansing 48912, (517) 450-0523

Vicki Kitts, 1840 Boxwood Ln, East Lansing 48823

Wm. Grooller, 17527 Shaftsbury, Detroit, 48219, (313)531-0356

R.J.Grzegorzczuk, 3029 Wingate Apt 2C, Grand Rapids 49500

Mike Skidmore, 3483 Kathy Dr, Flint 48508, (313) 735-6044

V.E.Vandonburg, 2177 Michigan, Eaton Rapids 48827

Printed by All-Star Printing, Lansing 48912

PURPOSE and SERVICES The Michigan Chess Association, a non-profit corporation, promotes chess education for juniors and adults by publishing a magazine, MICHIGAN CHESS and a Tournament Bulletin, each on alternate months; aiding schools and chess clubs with publicity, information and supplies; aiding local and regional chess events; and by organizing 10 Michigan championship tournaments per year: the Elementary School Team Championship, the Junior High School Team Championship, the High School Team Championship, the Michigan Junior Championship, The Michigan Amateur Championship, the Michigan Masters/Experts Championship, the Michigan Class Tournament, the Michigan Open Championship (determines over-all state champion each year), the Michigan Women's Championship, and the Michigan Speed Championship. The Michigan Chess Association has been cited by the United States Chess Federation as one of the most active chess organizations in the U.S.

ADVERTISING RATES and Copy Sizes

| | | | | | |
|--------------|----------------------|------|-----------|----------------------------|------|
| Back cover | 7 1/2 x 6 1/2 inches | \$80 | 1/4 page | 7 1/2 x 2 1/2 or 3 1/2 x 5 | \$25 |
| Page, inside | 7 1/2 x 10 inches | \$80 | 1/8 page | 3 1/2 x 2 1/2 inches | \$15 |
| | | | 3/4 page | 7 1/2 x 7 1/2 inches | \$62 |
| | | | 1/16 page | 3 1/2 x 1 1/2 inches | \$9 |
| | | | | 7 1/2 x 5 or 3 1/2 x 10 | \$45 |
| | | | Minimum | 3 1/2 x 1 inch | \$5 |

DEADLINE: 10th of month preceding issue for photo ready copy received with payment. Send sooner if preparation work needed (we'll quote cost).

MOODY NAMED ASSISTANT EDITOR



David Moody, our outstanding long-time Games Department columnist and tournament reporter, has been promoted to the post of Assistant Editor, of MICHIGAN CHESS.

It is a well-deserved promotion. Since taking over the Games Department column in 1981 he has become the most prolific writer (all high-quality material) the magazine ever had. Besides his column, he has been reporting most of MCA's championship tournaments, as well as Michigan players' actions in the U.S. Open, etc. He is dependable. Never misses a deadline with his packet of material, sometimes 40 typed pages or more, always camera-ready.

He has been called one of the best in the U.S. We say THE best.

His salary will be the same as the editor's, in five figures--all zeros, which means he continues at his same pay, even though his work load will increase. He insisted he could handle extra work.

Congratulations, Dave. You may not need more work, but MICHIGAN CHESS sure needs you.

THE NEXT 21 PAGES

| | |
|---|----|
| Book Review | 4 |
| Ben Finegold in Europe | 4 |
| USCF Policy Actions at Annual Meeting | 4 |
| The U.S. Open Championship | 5 |
| The Michigan Open Championship | 6 |
| Michigan Open Reserve Section | 11 |
| U.P. Chess Championship | 13 |
| Grand Rapids Hex Tourney | 13 |
| MCA President Weds | 13 |
| Michigan on National Committees | 13 |
| 50 Year Chess Columnist dies | 13 |
| 1989 U.S. Open in Chicago | 13 |
| East Detroit Open | 14 |
| Michigan's Top 100 | 15 |
| Grand Rapids Summer Swiss | 16 |
| Michigan Chess Hall of Fame | 16 |
| Kitts Recalls First Tourney Games | 17 |
| Detroit Metro League | 18 |
| A Tricky Chess Problem | 18 |
| Postal Chess | 19 |
| Invitational Championship Finals | 21 |
| Tournament Calendar | 22 |
| Michigan Speed Championship | 24 |

GRAND RAPIDS WANTS A LEAGUE

The popular Metro League is too good an idea to let Detroiters keep to themselves. We want to play team chess on the West Coast too! Anyone with an interest in forming a Western League with the same format as Metro League (four boards plus an alternate, games on Friday nights once a month), please contact either Ray Garrison (517-393-8428) or myself (616-669-5986). We hope to begin the league this fall and play until spring.

The only difference between Metro and West will be that the playing site will probably rotate among West Michigan clubs who wish to host the league. Initially, both the Grand Rapids and Lansing clubs have indicated willingness to do this.

—by Jeffery Boes

Michigan Chess Association
PATRON MEMBERS

- Fred Cramer, Mequon, Wis.
- American Chess Foundation
- The Rosenbergs, Holt
- Richard Barrett, Grand Rapids
- Toshio Imai, East Lansing
- Susan Eareckson, East Lansing
- The Vandenburgs, Eaton Rapids
- Harold Winston, Naperville, IL
- Marvin Rogan, Chicago
- Mark Pence, Livonia
- Robert Heritier, Grosse Pte Woods
- Robert Perkins, Walled Lake
- Edgar Snejders, Lansing
- Claude E. Williams, Mt. Morris
- Timothy Sawmiller, Novi
- Rudolf Franke, Washington MI
- Lt. Chad Hill, U.S. Navy
- E. Philip Soper, Ann Arbor
- Walter Ransom, Cadillac
- Clifford H. Rice, Mt. Clemens
- Ronald K Gore, Battle Creek
- William S. Stoddard, East Lansing
- David C. Pearson, Grand Rapids
- Edwin L. Johnson, Monroe
- Thomas A. Garvin, Niles
- Paul Simmons, Canton
- Margaret Clark, Dearborn
- The Youssefs, Ypsilanti
- Robert R. Bourne, Jr., Maple City
- Robert M. Wright, Mason
- Warren W. Cowan, Farmington Hills
- Richard Meek, Battle Creek
- Robert D. Perkins, Walled Lake
- Richard D. Higgins, South Haven
- Edward Simon III, Lansing
- Steve R. Krevinko, Plymouth
- Dr. William A. Henkin, Birmingham
- Clifford Rice, Mt. Clemens
- Sylvester R. Robes, Farmington Hills
- Daniel T. Libby, Dearborn

Donors of \$25 or more (plus membership) to the MCA Fund Drive are listed for a year in Michigan chess as PATRON MEMBERS of the Michigan Chess Association. Many have contributed more than \$25 - and quite a few a lot more. Our special thanks to all for this badly needed and much appreciated help.

We urge all who can do it to contribute to our Fund Drive. Merely mail check marked "Donation" to MCA, 2177 Michigan, Eaton Rapids MI 48827. It's tax deductible.

BOOK NOTES

By V.E.Vandenburg, MC Editor.

PLAN LIKE A GRANDMASTER, by Akexi Suetin, Soviet grandmaster, a new book this month. Published by David & Charles, North Pomfret, Vermont, 05053, \$15.95.

Here is an interesting and valuable new book. It was written by a Russian grandmaster, Alexei Suetin; the type was set in Canada, the book was printed in Great Britain, and it was published in the United States--one of the line of good Batsford chess books distributed here by David & Charles, Vermont.

Though with the usual attractive soft cover, its binding is sewed, not just bound with the glue that sometimes lets pages come loose.

Its 266 pages are loaded with around 300 games (including over a half dozen by Bobby Fischer) and 162 diagrams, all of which illustrate the author's ideas about good stuff in the openings, transition to middle game, etc. No long lectures. He comes right to the point fast in each principle he expounds and immediately shows it in a game. All the games are short. In some examples only game excerpts are used, getting to the point even faster.

So what is the point? Well, did you ever work up a good, solid and opening and start drooling over it--then stare stupidly at the board wondering "Now what do I do?"

This predicament is less likely to occur after you zip through some of his interesting principles of opening play, relation of the opening to later later stages of the game, attack during transition to the middle game, modern strategic problems of struggle for the center, etc.

Maybe this book isn't for you. You are already a master or a high rated expert. So forget it. But if you want a fast, well illustrated peek at the principles a grandmaster has in mind from the time he makes his first few moves and right on into the main part of the game, take a look at this book.

It won't make you an instant master. You can't learn piano, for instance, merely by asking a great pianist how to play it. An eager,

would-be instant genius once asked Bobby Fisher, "How can I play good chess?" Fischer told him how in just three words: "Make good moves."

This book tells you how to make those moves. Read it.

BEN FINEGOLD WINS 1st NORM IN BELGIUM

From MARK FINEGOLD

I have just received some information from Ben that I thought you might be interested in.

He scored 5 1/2 out of 9 at an

international tournament in Ostend, Belgium, in September, picking up his first IM norm in the process.

Among his victims were GM Anthony Miles of Britain and GM Ivan Faraogo of Hungary. Faraogo was the 1981 Hungarian co-champion with Lajos Portisch! I will send some game scores when I receive them--or Ben may send them directly to you.

As you know, Canadian Master Ray Stone is one norm away from his IM title. If Ben doesn't return soon, no one will be able to stop Ray from dominating the state. Bring back Wes Burger!

What Happened in Boston

A REPORT ON THE 1988 USCF ANNUAL MEETINGS

By USCF President Harold Winston

The successful 1988 U.S. Open in Boston drew 614 players and produced a clear winner: GM Dimitri Gurevich, who scored 10-2. GM Maxim Dlugy won the Speed Championship, and three players shared first in the Denker Tournament of Champions: Vivek Rao (PA), Robby Adamson (AZ) and Ilya Gurevich (MA).

1. **ELECTIONS.** Policy Board Member-at-Large: David Saponara (S.CA) 175, Charlie Davis (TX) 90. Regional Vice Presidents: I--Warren Pinches (MA), II--Alan Kanter (NY), III--David Mehler (MD), IV--A.J. Goldsby (FL), V--Gary Kitts (MI), VI--Mike Selig (WI), VII--Tim Just (IL), VIII Meroon Weeks (AL), X--Dennis Glascock (OK), XI--Andy Lazarus (N.CA).
2. **EXECUTIVE DIRECTOR.** After interviewing candidates for the job, the Policy Board voted 7-0 to appoint Al Lawrence our new Executive Director.
3. **FINANCES.** USCF lost \$201,000 for the fiscal year ending June 30, 1988. A motion by Alan Benjamin (NY) to base discussion on the New York State Chess Assn's. budget proposals rather than on compromise proposals from the Policy Board failed 43-46. After various budget amendments were rejected, the Delegates passed a motion by Arnold Denker supporting the proposed budget while noting sentiment that the loss be made up over more than one year.
4. **DUES INCREASE.** Effective January 1, 1989 USCF dues will increase to \$30 per year for Regular members, \$15 for Youth members, \$7 for Scholastic members, \$4 for Participating Jr., \$7 Blind, \$20 Senior, \$5 family member, \$1.50 per game for Tournament members, \$60 Sustaining, \$600 Life. The affiliate commission remains at \$4 for Regular members and \$2 for Youth members.
5. **RATING FEE INCREASE.** Effective January 1, 1989, the rating fee increases to 50¢ per non-scholastic game and 30¢ per game for scholastic events. The Policy Board increased the TLA fee to \$6 per line also effective January 1, 1989. The crosstable fee increases to \$4 effective January 1, 1989.
6. **AFFILIATION FEES.** All affiliates shall pay \$30 per year effective January 1, 1989; scholastic affiliates shall receive School Mates. This increases affiliate fees for scholastic, prison and college affiliates.
7. **SASP.** After the current fiscal year, SASP funds will be made available to the states at the beginning of a fiscal year rather than after a fiscal year's end. All states will shortly be notified of the funds now available to them.
8. **OLYMPIAD TEAMS.** The USA will send both men's and women's teams to the 1988 Olympiad in Greece; this should be our strongest women's team ever.
9. **NATIONAL CHAMPIONSHIPS.** The mandate for annual U.S. Championships and U.S. Women's Championship remains in effect; however, in view of USCF's financial situation the Women's Championship is not funded at this time. It will be held in 1988 only if a financial sponsor is found.
10. **TOURNAMENT INCENTIVE PROGRAM.** For the current fiscal year, this program is limited to \$3,000 without any additional prerequisites (no free advertising, mailing labels, ad typesetting).
11. **CHESS LIFE.** The Delegates rescinded a past motion requiring an increase

Continued on next page

U.S. OPEN DRAWS 'EM FROM 8 COUNTRIES

The 1988 US Open, held in Boston, Massachusetts, drew 632 players from 40 states, the District of Columbia, and seven foreign countries. Included were 10 grandmasters, 10 international masters, and over 100 Masters in all in what was certainly one of the strongest Opens ever.

The winner, at 10 points, was GM Dmitry Gurevich. Scoring 9½ were IM Michael Rohde, GM Larry Christiansen, GM Roman Dzindzichashvili and IM Brian Nickoloff. 12 players scored 9 points each.

Michigan sent 14 players, but could not take home any prize money this time. The team was as follows: Bill Groeller (7½ points), Jim Märfia (6½), David Moody (6½), Dan Burg (6½), Gene Hickey (6), Bill Calton (6), David W. Calton (5½), Bill Daly (5½), Sylvester Robes (4½), Connie Anderson (4), David A. Calton (4), Peter Nixon (3½), Richard Neely (3½), Margaret Clark (2½).

A full report will appear in the next issue of Michigan Chess; there was just too much for this one!

What Happened in Boston (From preceding page)

in pages based on advertising content. The Policy Board approved the acquisition of new printing equipment.

12. COMPUTERS. The fee for CRA ratings will be actual tangible expenses plus a fixed value of \$1,500. Computers may win only titles that are specifically reserved for computers.

13. BINFOS. Regional VP's will no longer receive free BINFOS upon request. Any member can subscribe to the BINFOS at cost.

14. ACTION CHESS. Following a heated debate, the Delegates rejected attempts to mandate a separate rating system, use of 1/2 K, or use of full K. A straw vote indicated the first choice of the Delegates as follows: 33 for full K (current system), 28 for separate system, 20 for 1/2 K. Action chess games continue to be rated the same as other games and further studies will be made available to the Policy Board at the 1989 Delegates meeting.

15. GRAND PRIX. Effective January 1, 1989, full Grand Prix points will be awarded in Action Chess events.

16. BYLAWS CHANGES. A Regional VP may not be elected RVP when his previous term expires (Mark Levine, NY). Efforts to abolish RVP's and to require a 2/3 vote for all Bylaws changes failed.

17. DIRECT ELECTIONS. A proposal for direct election by USCF members or Policy Board members, RVP's, and Delegates failed at both the membership meeting and delegate meetings; only four Delegates voted in favor. At the members' meeting, US Open Chief Organizer, Bill Lukowiak (MA), delivered the convention's most notable speech, defending the current system and invoking the American Revolution, James Madison, the 1787 Constitutional Convention and Daniel Webster.

18. FIDE. The Policy Board reappointed Don Schultz as FIDE Delegate (6-1) and unanimously affirmed its confidence in his integrity and that he had faithfully carried out PB directions. The Policy Board also welcomed input from our GMs and Prochess concerning our FIDE delegation and instructed our representatives to oppose FIDE granting GM titles in action (active) chess. The Delegates passed a resolution strongly opposing the proposed draft of the FIDE Code of Ethics (which the Policy Board had earlier opposed) and rejected a resolution to repudiate the FIDE vote on Calvo.

19. FIDE & CANADIAN RATINGS. The Delegates recommended that organizers add 130 points to FIDE and Canadian ratings for pairings and prizes.

20. NATIONAL TOURNAMENTS. The 1990 U.S. Open will be in Jacksonville, FL; 1990 National H.S. in Kansas City; National JHS in Salt Lake City; National Elementary in Hollywood, FL. The 1989 U.S. Amateur Team will be in Somerset, NJ; St. Louis, MO; Jacksonville, FL; and Los Angeles, CA. The 1989 U.S. Amateur will be held in Somerset, NJ and in Salt Lake City. The 1988 Pan Am Intercollegiate will be in New Brunswick, NJ, December 26-30.

21. HONORS & AWARDS. Gerry Dullea and Helen Warren were elected Life Voting Members and Delegates-at-Large. Fidelity International President, Sid Samolé, was given the Koltanowski Gold Medal for financial support of chess. Other awards included Gerry Dullea (Distinguished Service), David Welsh and Fred Townsend (both Special Service), Harry Lyman (Meritorious Service). Albuquerque, NM; Southfield, MI; and Memphis, TN, were honored as chess communities of the year. The chess journalists declared Andy Soltis Chess Journalist of the year.

1988 MICHIGAN OPEN CHAMPIONSHIP

Midway Motor Inn, Lansing

OPEN SECTION

| | | | | | | | | | |
|---------------------------------------|------|-----|-----|-----|-----|-----|-----|-----|-----|
| 1 Ray Stone, Windsor, ON | 2436 | W27 | W26 | W10 | W53 | W 2 | D 7 | W 8 | 6 ½ |
| 2 John Wygrecki, Detroit | 2244 | W70 | W37 | W16 | W 4 | L 1 | W23 | W 9 | 6 |
| 3 Eric Fischvogt, Grand Rapids | 2289 | W69 | W55 | W23 | L 7 | D 6 | W25 | W15 | 5 ½ |
| 4 Lawrence Chachere, Chicago, IL | 2377 | W66 | W60 | W32 | L 2 | D39 | W11 | W 7 | 5 ½ |
| 5 Carlton Thomas, Highland Park | 2197 | W49 | D28 | W33 | W74 | W13 | L 8 | W21 | 5 ½ |
| 6 Paul Shields, Traverse City | 2077 | L31 | W35 | W52 | W66 | D 3 | W26 | W13 | 5 ½ |
| 7 Dexter Thompson, Detroit | 2211 | W78 | W36 | W11 | W 3 | D 8 | D 1 | L 4 | 5 |
| 8 David Hahn, Saginaw | 2281 | W30 | W24 | W42 | D13 | D 7 | W 5 | L 1 | 5 |
| 9 Kevin Noren, Lansing | 2234 | W43 | L11 | W28 | W22 | W16 | W12 | L 2 | 5 |
| 10 Tom Mazuchowski, Sterling Heights | 2126 | W35 | W62 | L 1 | L11 | W36 | W48 | W22 | 5 |
| 11 Paul Bauerle, DeWitt | 2002 | W33 | W 9 | L 7 | W10 | W53 | L 4 | W88 | 5 |
| 12 Morgan Everett, Detroit | 2108 | D68 | W67 | D50 | W27 | W38 | L 9 | W34 | 5 |
| 13 Kevin Czuhai, Grand Rapids | 2219 | W52 | W17 | W25 | D 8 | L 5 | W24 | L 6 | 4 ½ |
| 14 Sandy Zabell, Chicago, IL | 2189 | D72 | W40 | D39 | W51 | L23 | W37 | D20 | 4 ½ |
| 15 Mike Kebrdle, Farmington Hills | 2130 | D67 | L22 | W43 | W50 | W19 | W17 | L 3 | 4 ½ |
| 16 Ed Bennett, Grand Rapids | 2069 | W75 | W61 | L 2 | W46 | L 9 | D30 | W37 | 4 ½ |
| 17 James Riseman, Lapeer | 1963 | W85 | L13 | W54 | D18 | W45 | L15 | W42 | 4 ½ |
| 18 John Norcross, Lansing | 2123 | W56 | W31 | L53 | D17 | L24 | D67 | W38 | 4 ½ |
| 19 Lee Maring, Estill Springs, TN | 2013 | L29 | W68 | W78 | D41 | L15 | W54 | W44 | 4 ½ |
| 20 Jason Morris, Brighton | 2006 | W88 | L53 | L22 | W81 | W50 | D14 | W44 | 4 ½ |
| 21 Stan Jarosz, Grand Rapids | 2003 | L79 | D56 | W89 | W87 | W41 | W39 | L 5 | 4 ½ |
| 22 John Schoonmaker, East Lansing | 1865 | D39 | W15 | W20 | L 3 | W42 | W51 | L10 | 4 |
| 23 Mohammed Bagherabadi, Gonzalez, CA | 2073 | W57 | W34 | L 3 | W96 | D14 | L 2 | --- | 4 |
| 24 Faria Jirjis, Garden City | 2017 | W77 | L 8 | D44 | W58 | W18 | L13 | D32 | 4 |
| 25 Greg Bailey, Cheboygan | 2071 | W54 | W79 | L13 | D30 | W29 | L 3 | D27 | 4 |
| 26 David Moody, Dearborn | 2021 | W64 | L 1 | D58 | W44 | W69 | L 6 | D30 | 4 |
| 27 Tom LaForge, Warren | 1951 | L 1 | W77 | W81 | L12 | W31 | D33 | D25 | 4 |
| 28 Rea Hayes, Lapeer | 1955 | W80 | D 5 | L 9 | L29 | W59 | W68 | D33 | 4 |
| 29 Richard Sanborn, Monroe | 1806 | W19 | L51 | D37 | W28 | L45 | W69 | D41 | 4 |
| 30 Steve Scott, Lansing | 1935 | L 8 | W88 | W75 | D25 | D33 | D16 | D26 | 4 |
| 31 Bill Calton, Southfield | 1847 | W 6 | L18 | L38 | W61 | L27 | W71 | W52 | 4 |
| 32 Andrew Beider, Farmington | 2179 | W46 | W44 | L 4 | L38 | D40 | W66 | D24 | 4 |
| 33 Jim Kulbacki, Lake Omen | 2077 | D89 | W59 | L 5 | W70 | D20 | D27 | D28 | 4 |
| 34 David Levadi, Birmingham | 1811 | W47 | L23 | L69 | W63 | W62 | W45 | L12 | 4 |
| 35 Olaf Haakonstad, Ann Arbor | 1858 | L10 | L 6 | W83 | W82 | L20 | W75 | W55 | 4 |
| 36 Mike Skidmore, Flint | 1926 | W82 | L 7 | W79 | L23 | L10 | W76 | W58 | 4 |
| 37 Steve Mellen, Troy | 1942 | W84 | L 2 | D29 | W68 | W74 | L14 | L16 | 3 ½ |
| 38 Stan Colonias, Livonia | 1972 | L61 | W57 | W31 | W32 | L12 | D42 | L18 | 3 ½ |
| 39 Gary Kitts, East Lansing | 2088 | D22 | W87 | D14 | W62 | D 4 | L21 | --- | 3 ½ |
| 40 Warren Raftshol, Sutton's Bay | 1877 | D74 | L14 | W56 | W60 | D32 | L20 | D43 | 3 ½ |
| 41 Steve Mitchell, Troy | 2124 | D59 | W72 | D51 | D19 | L21 | D46 | D29 | 3 ½ |
| 42 Glenn Gook, Wyoming | 2103 | W58 | W81 | L 8 | D69 | D22 | D38 | L17 | 3 ½ |
| 43 Mark Stefanski, Flushing | 1920 | L 9 | W73 | L15 | D65 | D56 | W47 | D40 | 3 ½ |
| 44 William Ford, Lansing | 1888 | W71 | L32 | D24 | L26 | W80 | W50 | L19 | 3 ½ |
| 45 Gordon Morrell, Okemos | 2264 | W48 | D50 | L74 | W67 | L17 | L34 | W57 | 3 ½ |
| 46 David W. Calton, Southfield | 1905 | L32 | W84 | W55 | L16 | D50 | D41 | D48 | 3 ½ |
| 47 James Lewis, Southgate | 1339 | L34 | D49 | W71 | L55 | W63 | L43 | W67 | 3 ½ |
| 48 David Arganian, East Lansing | 1934 | L45 | L76 | W73 | W57 | W75 | L10 | D46 | 3 ½ |
| 49 Fred Kunk, Ypsilanti | 1874 | L 5 | D47 | L68 | L80 | W82 | W86 | W66 | 3 ½ |
| 50 Bruce Robison, Lansing | 2010 | W73 | D45 | D12 | L15 | D46 | L44 | D54 | 3 ½ |
| 51 Lineas Baze, Jackson | 2063 | D07 | W29 | D41 | L14 | W52 | L22 | --- | 3 |
| 52 Dairen Braak, Dearborn | 1913 | L13 | W85 | L 6 | W76 | L51 | W56 | L31 | 3 |
| 53 Steve Andrews, Livonia | 2247 | W63 | W20 | W18 | L 1 | L11 | --- | --- | 3 |
| 54 V.J. Brattin, Belleville | 1846 | L25 | W71 | L17 | D79 | W60 | L19 | D50 | 3 |
| 55 Chris Hankinson, Grand Rapids | 2031 | W76 | L 3 | L46 | W47 | D66 | D58 | L35 | 3 |
| 56 Raymond Burwell, Detroit | 1841 | L18 | D21 | L40 | W86 | D43 | L52 | W75 | 3 |
| 57 Delander Johnson, Twin Lake | 1838 | L23 | L38 | W85 | L48 | W61 | W62 | L45 | 3 |
| 58 Thomas Triplett, East Lansing | 1883 | L42 | W86 | D26 | L24 | W79 | D55 | L36 | 3 |
| 59 Ed Ball, West Bloomfield | 1845 | D41 | L33 | L67 | W84 | L28 | W64 | D60 | 3 |
| 60 Chris Eagle, Troy | 2049 | W65 | L 4 | D70 | L40 | L54 | W80 | D59 | 3 |
| 61 B. Michael Williams, Lansing | 1634 | W38 | L16 | L66 | L31 | L57 | W72 | W80 | 3 |
| 62 James Owens, Orchard Lake | 1939 | W86 | L10 | W76 | L39 | L34 | L57 | W77 | 3 |
| 63 Dan Burg, Ypsilanti | 1926 | L53 | L75 | W64 | L34 | L47 | W81 | W76 | 3 |
| 64 Fred Robbins, Lansing | 1759 | L26 | L70 | L63 | W73 | W89 | L59 | W78 | 3 |
| 65 Harold Steen, Detroit | 1835 | L60 | --- | --- | D43 | L67 | W79 | D71 | 3 |
| 66 Henry Johnson, Detroit | 1924 | L 4 | W83 | W61 | L 6 | D55 | L32 | L49 | 2 ½ |
| 67 Lindell Brady, Grand Blanc | 1898 | D15 | L12 | W59 | L45 | W65 | L18 | L47 | 2 ½ |
| 68 Mickey Maloy, Detroit | 1844 | D12 | L19 | W49 | L37 | W70 | L28 | --- | 2 ½ |
| 69 David Smith, Ann Arbor | 1944 | L 3 | W80 | W34 | D42 | L26 | L29 | --- | 2 ½ |
| 70 Steve Conley, Newport | 1914 | L 2 | W64 | D60 | L33 | L68 | W77 | --- | 2 ½ |
| 71 John Lang, Plymouth | 2109 | L44 | L54 | L47 | W85 | W81 | L31 | D65 | 2 ½ |
| 72 Marvin Kornhauser, Franklin | 1867 | D14 | L41 | L87 | D77 | D83 | L61 | W79 | 2 ½ |
| 73 Rowland Johnston, Farmington | 1747 | L50 | L43 | L48 | L64 | D85 | W82 | W84 | 2 ½ |
| 74 Thomas Ward, Midland | 2094 | D40 | W89 | W45 | L 5 | L37 | --- | --- | 2 ½ |
| 75 Raymond Garrison, East Lansing | 1801 | L16 | W63 | L30 | W78 | L48 | L35 | L56 | 2 |
| 76 Ed Frawley, Holt | 1771 | L55 | W48 | L62 | L52 | W78 | L36 | L63 | 2 |
| 77 Brad Lang, Romeo | 1822 | L24 | L27 | D86 | D72 | W84 | L70 | L62 | 2 |
| 78 Ben Handelsman, Ann Arbor | 1889 | L 7 | W82 | L19 | L75 | L76 | W83 | L64 | 2 |
| 79 John Thurman, Ferndale | 1730 | W21 | L25 | L36 | D54 | L58 | L65 | L72 | 1 ½ |
| 80 Ken Falkowski, Detroit | 1818 | L28 | L69 | D84 | W49 | L44 | L60 | L61 | 1 ½ |
| 81 Robert Moore, Battle Creek | 1836 | +90 | L42 | L27 | L20 | L71 | L63 | D85 | 1 ½ |
| 82 Paul Turner III, Battle Creek | 1545 | L36 | L78 | W88 | L35 | L49 | L73 | D83 | 1 ½ |
| 83 Steve Rosenberg, Canton | 1697 | L11 | L66 | L35 | D88 | D72 | L78 | D82 | 1 ½ |
| 84 Henry Thomas, Ypsilanti | 1626 | L37 | L46 | D80 | L59 | L77 | BYE | L73 | 1 ½ |
| 85 Duane Croel, Mesick | 1634 | L17 | L52 | L57 | L71 | D73 | D88 | D81 | 1 ½ |
| 86 Brad Iverson, Huntington Woods | 1574 | +62 | L58 | D77 | L56 | W88 | L49 | --- | 1 ½ |
| 87 Michael Koteles, Flint | 1835 | D51 | L39 | W72 | L21 | --- | --- | --- | 1 ½ |
| 88 Matt Bolde, Canton | 1804 | L20 | L30 | L82 | D83 | L86 | D85 | L11 | 1 |
| 89 Frank Dmuchowski, Westland | 1865 | D33 | L74 | L21 | --- | L64 | --- | --- | 1 |
| 90 Tony Palmer, Utica | 2092 | -81 | --- | --- | --- | --- | --- | --- | 0 |

RESERVE SECTION

| | | | | | | | | | |
|---------------------------------|------|------|------|------|------|------|------|------|-----|
| 1 Paul Kolsti, Irving, TX | 1717 | W 70 | W 44 | D 4 | W 8 | W 67 | W 11 | W 6 | 6 ½ |
| 2 Jim Mikus, Lapeer | 1777 | W 27 | W 13 | W 62 | D 32 | W 20 | W 4 | W 5 | 6 ½ |
| 3 James Stockham, Jackson | 1718 | W 68 | D 69 | W 55 | W 52 | W 32 | D 6 | W 14 | 6 |
| 4 Larry Munger, Byron Center | 1635 | W 77 | W 72 | D 1 | W 10 | W 12 | L 2 | W 21 | 5 ½ |
| 5 John Blake, Detroit | 1716 | W 86 | W 9 | W 15 | D 20 | W 53 | W 33 | L 2 | 5 ½ |
| 6 Robert Smith, Davison | 1658 | W 60 | W 98 | W 38 | W 25 | W 33 | D 3 | L 1 | 5 ½ |
| 7 Robert Rosekrans, Bay City | 1715 | W 82 | W114 | W 37 | W 12 | L 11 | W 49 | D 9 | 5 ½ |
| 8 David Sundeen, Lansing | 1684 | W 76 | D 24 | W 40 | L 1 | W 52 | W 53 | W 13 | 5 ½ |
| 9 Don Winslow, East Lansing | 1584 | W 94 | L 5 | W 78 | W 56 | W 22 | W 25 | D 7 | 5 ½ |
| 10 Helio Rincon, Adrian | 1711 | W 39 | W 57 | D 52 | L 4 | W 69 | W 20 | W 23 | 5 ½ |
| 11 Charles Collins, Harper Wds | 1781 | W 85 | W 19 | D 67 | W 54 | W 7 | L 1 | D 16 | 5 |
| 12 Steve Zubatch, Plymouth | 1789 | W 42 | W 49 | W 23 | L 7 | L 4 | W 62 | W 36 | 5 |
| 13 George Carpenter, Pinckney | 1621 | W 89 | L 2 | W 66 | W 43 | W 58 | W 17 | L 8 | 5 |
| 14 David Robinson, Waterford | 1686 | W 71 | D 40 | D 24 | W 42 | W 45 | W 18 | L 3 | 5 |
| 15 Mike Hoffman, Marquette | 1605 | W120 | W 34 | L 5 | W 41 | L 21 | W 79 | W 33 | 5 |
| 16 Ron Grzegorzczak, Grand Rpd | 1758 | W 48 | W 36 | D 54 | L 67 | W 46 | W 55 | D 11 | 5 |
| 17 Brian Brattin, Coldwater | 1705 | W 75 | L 52 | W 61 | W 57 | W 19 | L 13 | W 37 | 5 |
| 18 Gilbert Pointer, Davison | 1603 | W100 | L 38 | W 88 | W 71 | W 35 | L 14 | W 34 | 5 |
| 19 James Anderson, Tecumseh | 1613 | W 96 | L 11 | W101 | W 70 | L 17 | W 68 | W 45 | 5 |
| 20 Helmut Laumer, Williamston | 1680 | W 21 | W 61 | W 56 | D 5 | L 2 | L 10 | W 64 | 4 ½ |
| 21 Shawn McIntosh, Erie, PA | 1723 | L 20 | W 87 | W 86 | W 24 | W 15 | D 23 | L 4 | 4 ½ |
| 22 John Griffin, Battle Creek | 1658 | W 47 | W 59 | L 33 | W 30 | L 9 | D 27 | W 58 | 4 ½ |
| 23 Max Ruhلمان, Kentwood | 1679 | W 92 | W 79 | L 12 | W 80 | W 27 | D 17 | L 10 | 4 ½ |
| 24 Juan Rodriguez, Flint | 1523 | W108 | D 8 | D 14 | L 21 | D 56 | W 72 | W 63 | 4 ½ |
| 25 James Starr, Muskegon | 1733 | D 91 | W 93 | W 69 | L 6 | W 54 | L 9 | W 57 | 4 ½ |
| 26 Dennis Ridella, Warren | 1752 | W 95 | L 37 | L 68 | W 75 | W 39 | D 30 | W 50 | 4 ½ |
| 27 Gary Fulton, Plymouth | 1504 | L 2 | W116 | W 98 | W109 | L 23 | D 22 | W 55 | 4 ½ |
| 28 Henry Rankin, Alto | 1680 | D 93 | W 91 | L 53 | W 65 | D 68 | W 42 | D 29 | 4 ½ |
| 29 Mark Malzahn, Dearborn | 1598 | W104 | L 33 | L 70 | W 87 | W 77 | W 74 | D 28 | 4 ½ |
| 30 Gary Fletcher, Flint | 1498 | W117 | W 99 | L 35 | L 22 | W 98 | D 26 | W 54 | 4 ½ |
| 31 David Doiningier, Erie, PA | 1660 | W 78 | L 56 | D 48 | L 92 | W 91 | W 60 | W 53 | 4 ½ |
| 32 Christian Staples, Kalamazoo | 1701 | W 73 | W 64 | W 97 | D 2 | L 3 | + 67 | --- | 4 ½ |
| 33 Robert McCarter, Ann Arbor | 1725 | W 88 | W 29 | W 22 | W 35 | L 6 | L 5 | L 15 | 4 |
| 34 Hassan Sobh, Dearborn | 1764 | W 65 | L 15 | L 39 | W 82 | W 61 | W 85 | L 18 | 4 |
| 35 Scott Shaler, Saginaw | 1708 | W107 | W 51 | W 30 | L 33 | L 18 | L 50 | W 70 | 4 |
| 36 Tom Boldrick, Grosse Ile | 1613 | W106 | L 16 | L 43 | W 78 | W 41 | W 76 | L 12 | 4 |
| 37 Ira McClurkin, Charlotte | 1602 | W110 | W 26 | L 7 | L 73 | W 70 | W 43 | L 17 | 4 |
| 38 Kevin Halstead, Burton | 1758 | W 81 | W 18 | L 6 | L 53 | L 79 | W107 | W 76 | 4 |
| 39 Pramote Sujarit, Troy | 1474 | L 10 | W120 | W 34 | L 49 | L 26 | W 97 | W 71 | 4 |
| 40 Don LaCuire, Bath | 1565 | W113 | D 14 | L 8 | D 59 | L 74 | W 77 | W 75 | 4 |
| 41 Tanapoom Sujarit, Troy | 1326 | L109 | W121 | W 51 | L 15 | L 36 | W 86 | W 68 | 4 |
| 42 Jennifer Skidmore, Flint | 1522 | L 12 | W 89 | W105 | L 14 | W102 | L 28 | W 73 | 4 |
| 43 Jeff Aldrich, Burton | 1440 | L 99 | W112 | W 36 | L 13 | W 44 | L 37 | W 69 | 4 |
| 44 Norman Burwell, Detroit | 1601 | W112 | L 1 | W 76 | W 58 | L 43 | W 84 | W 82 | 4 |
| 45 Brian June, Flint | 1588 | L 59 | W115 | W 75 | W 97 | L 14 | W 73 | L 19 | 4 |
| 46 Joe Feldman, Southfield | 1596 | L 97 | W 60 | W107 | D 72 | L 16 | W 92 | D 47 | 4 |
| 47 Kevin Gregory, Vassar | 1322 | L 22 | D119 | W 91 | L 69 | W114 | W 52 | D 46 | 4 |
| 48 Bob Repas, Bath | 1470 | L 16 | W110 | D 31 | L 55 | D 83 | + 93 | W 74 | 4 |
| 49 Scott Robinson | | | | | | | | | |

214 MAKE STATE CHAMPIONSHIP 2nd BIGGEST EVER

By David Moody

It was quite a memorable Michigan Open. The Midway Motor Lodge proved quite a popular site, drawing a total of 214 players for the second largest Open in history, beaten only by the 1979 253-player monster. The ten Masters in the Open section is a record, as far as I can tell, and 28 Experts is also a respectable total. Then, of course, there were the flies constantly buzzing the boards; this event surely set a record for most "j'adoubes".

We must needs acknowledge Gary Kitts, who set up the site and kept the air conditioning going, though the bottom thirty boards had to put up with a bit of unwanted serenading. Bill Groeller did the Open, Tim Sawmiller and Jeff Boes the Reserve, and kept things going on track for the most part; we'll get to the Mohammed Comedy later ...

OPEN SECTION, ROUND 1

Counting from the top: Ray Stone (2436) led the event. He's won everything in Michigan, and seems to want to start over again. Important: as a native of Windsor, he is not eligible for Michigan titles, but can of course win cash.

#2 was another foreigner in Lawrence Chachere (2377), the new games editor of the Illinois Chess Bulletin. Next, we come to the Michigan contenders: Eric Fischvogt (2289), David Hahn (2281), Steve Andrews (2247), John Wygrecki (2244), Kevin Noren (2234), Kevin Czuhai (2219), and Dexter Thompson (2211). Finally, there was Gordon Morrell, who recently moved from Canada where he had a 2134 rating; a conversion factor paired him as 2264.

Any one of these would certainly be a favorite for the title. True, defending champ Lineas Baze (2063) was in the field, but it looked as though a miracle would be needed for an Expert to win it this time.

And the Masters started out like they meant business, all 10, winning in the first round. The prettiest was Czuhai's demolition:

KEVIN CZUHAI (2219)—DAIREN BRAAK (1913): 1 e4 c5 2 Nf3 d6 3 Bb5+ Bd7 4 Bxd7+ Qxd7 5 Oo Nc6 6 c3 Nf6 7 d4 Nxc4 8 d5 Ne5 9 Re1 Nxf3+ 10 Qxf3 Nf6 11 Na3 a6 12 Nc4 Qc7 13 a4 Nd7 14 Bf4 OoO 15 a5 h5 16 b4.Kb8 17 Rab1 f6 18 b5 axb5 19 Rxb5 Ka7 20 h4 g5 21 hxg5 fxg5 22 Bxg5 Ne5 23 Nxe5.dxe5 24 Reb1

RESERVE SECTION

(From preceding page)

| | |
|---------------------------------|---|
| 91 John Andres, Ypsilanti | 1499 D 25 L 28 L 47 W 96 L 31 W111 L 60 2 1/2 |
| 92 Michael Davis, Ann Arbor | 1386 L 23 D 83 W 96 W 31 L 55 L 46 L 65 2 1/2 |
| 93 Michael Pinn, Dimondale | 1339 D 28 L 25 L 65 W119 D 51 - 48 D 95 2 1/2 |
| 94 Omer Carpenter, Vicksburg | 1318 L 9 L 50 W104 L 64 W101 D 81 L 80 2 1/2 |
| 95 Andy Whiting, Monroe | 1147 L 26 L 70 L 77 D110 W 96 D 87 D 93 2 1/2 |
| 96 Eugene Shutt, Battle Creek | 1243 L 19 D 65 L 92 L 91 L 95 W116 W110 2 1/2 |
| 97 Harvey Moore, Royal Oak | 1298 W 46 W109 L 32 L 45 L 50 L 39 L 86 2 |
| 98 Sam Vorhauer, Lansing | UNR W 50 L 6 L 27 W 88 L 30 L 70 L 87 2 |
| 99 VE Vandenburg, Eaton Rapids | 1686 W 43 L 30 - 1/2 D 85 L 76 L 75 L 89 2 |
| 100 Erik Hamilton, Farm. Hills | 1192 L 18 L 81 W 90 W 86 L 64 L 66 L 84 2 |
| 101 David Troupe, St. Louis | 1462 W 63 L 67 L 19 L105 L 94 L106 W112 2 |
| 102 Jay Zuverink, Zeeland | UNR L 64 L 78 W116 W107 L 42 L 82 L 77 2 |
| 103 Mark Allen, Kalamazoo | UNR L 69 L 75 W 89 L 66 L 78 L104 W113 2 |
| 104 Joe Kryston, Kalamazoo | 1149 L 29 L 76 L 94 W106 L 75 W103 L 78 2 |
| 105 Greg Hummel, Charlotte | UNR L 53 W 90 L 42 W101 L 85 - 61 - 2 |
| 106 Harvey Venia, Union Lake | 1235 L 36 L 68 L111 L104 W112 W101 L 88 2 |
| 107 Ray Brewer, Detroit | 1406 L 35 W117 L 46 L102 W113 L 38 - 2 |
| 108 Louis Axeman, East Lansing | 1181 L 24 L 88 L115 W116 L 82 +114 L 90 2 |
| 109 Jon Vasas, Lansing | 1671 W 41 L 97 W 79 L 27 - - - - - 2 |
| 110 Matthew Venia, Union Lake | 1187 L 37 L 48 L 67 D 95 +119 L 65 L 96 1 1/2 |
| 111 Mark Wolkow, Grand Rapids | UNR L 52 L 84 W106 L 76 D 87 L 91 - - - - - 1 1/2 |
| 112 Chris Borhani, Monroe | 1182 L 44 L 43 L 60 L 89 L106 BYE L101 1 |
| 113 Kenneth Workman, Ypsilanti | 1210 L 40 L 86 W121 L 79 L107 L 90 L103 1 |
| 114 Bobbi Spencer, Detroit | 1586 W 83 L 7 L 73 L 77 L 47 -108 - - - 1 |
| 115 Thomas Short, Flushing | 1324 L 62 L 45 W108 L 50 L 86 - - - - - 1 |
| 116 E. Louis Caron, Kalamazoo | 1259 L 51 L 27 L102 L108 L 90 L 96 EYE 1 |
| 117 Vicki Dix, East Lansing | 969 L 30 L107 L118 BYE L 84 L 89 - - - - - 1 |
| 118 Philip Johnson, Lansing | 1268 L 57 L 85 W117 L 61 - 88 - - - - - 1 |
| 119 Tim Maul, Flint | 1538 L 58 D 47 L 72 L 93 -110 - - - - - 1 1/2 |
| 120 James Carr, Glen Arbor | 1205 L 15 L 39 L 82 - - - - - 0 |
| 121 Allan Poord, Garden City | 1702 L 66 L 41 L113 - - - - - 0 |
| 122 Edgar Collins, Lansing | UNR L 79 - 73 - - - - - 0 |
| 123 Timothy Thomas, Sterling Ht | 1271 - 49 - - - - - 0 |
| 124 Steve Deerfield, Grand Rpd | 1496 - 56 - - - - - 0 |

Rb8 25 d6 exd6 26 Bd8! Qh7 27 a6 e4 28 axb7! (Have a queen!) Rxd8 29 b8Q+! (Have another!) 1-0

With 90 players overall (the second biggest Open Section, behind only 98 in 1980), this year's event had plenty of scope for upsets. If no Masters fell in round 1, several of the Expert Class bit the dust:

WILLIAM FORD (1888)—JOHN LANG (2109): 1 d4 Nf6 2 Nf3 e6 3 Bg5 d5 4 e3 Be7 5 c4 c6 6 Nc3 a6 7 Bd3 Nbd7 8 OoO 9 Qc2 dxc4 10 Bxc4 Re8 11 e4 Nf8 12 Rad1 b5 13 Bd3 Bb7 14 Bxf6 Bxf6 15 e5 Be7 16 Be4 Qc7 17 Rd2 Qb6 18 Rfd1 Rac8 19 Qd3 Qa5 (Black's play is, er, creepy.) 20 b3 Rc7 21 Qe3 Bc8 22 Rc2 Bd7 23 Ne2 Rec8 24 Nf4 Be8 25 Rdc1 Bd8 26 Ne1 Qb6 27 Nfd3 a5 28 Nc5 Qa7 29 Ned3 Be7 30 g4 h6 31 f4 g5 32 f5 exf5 33 gxf5 f6 34 h4 fxe5 35 dxe5 Nd7 36 f6 (Rollin', rollin', rollin') Nxf6 37 exf6 Bxf6 38 Rf1 Rf7 39 Rcf2 Bh8 40 Rxf7 Bxf7 41 Kg2 Re8 42 hxg5 h5 43 g6 Be6 44 Qh6 Bd5 45 Bxd5+ cxd5 46 Rf7 1-0

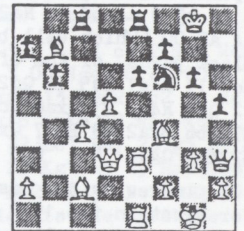
Other upsets included Paul Shields, losing on time in a probably drawn position to Bill Calton, and Lee Maring, outplayed in a long game by Richard Sanborn. We close on a bit of normalcy, however:

GLENN GOOD (2103)—THOMAS TRIPLETT (1883): 1 e4 c5 2 c3 d5 3 exd5 Qxd5 4 d4 Nf6 5 Nf3 exd4 6 cxd4 e6 7 Nc3 Bb4 8 Bd3 OoO 9 OoO Qd8 10 Bg5 h6 11 Bh4 Bxc3 12 bxc3 Nbd7 13 Re1 Re8 14 Qe2 Qc7 15 c4 b6 16 Ne5 Bb7 17 Bg3 Nxe5 18 Bxe5 Qd8 19 Rad1 Qe7 20 Bc2 Nh7 21 Qd3 g6 22 Re3 Rac8 23 Bf4 h5 24 d5 Qh4 25 g3 Qh3 26 Rde1 Nf6

WHITE TO PLAY

(You can just about smell it.)

27 Rxe6! Rxe6 (27...fxe6 28 Qxg6+ Kf8 29 Bd6+ Re7 30 Qxf6+ and 31 Bxe7, winning.) 28 Rxe6 Re8 29 Rxe8+ Nxe8 30 Be5 Ng7 31 Qe3 Nf5 32 Qg5 Kh7 33 Qf6 Kh6 34 Qh8+ Kg5 35 Bf4+ 1-0 (35...Kg4 36 Bd1#)



OPEN SECTION, ROUND 2

The top players got relatively small Experts this round; concretely, I got (!?) to play Stone. While Stone let me get three connected passed pawns for a desperate piece sacrifice, he quickly consolidated and destroyed me.

Board 2 was more interesting:

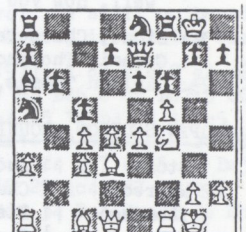
CHRIS EAGLE (2049)—LAWRENCE CHACHERE (2377): 1 d4 Nf6 2 c4 c5 3 d5 b5 4 cxb5 a6 5 Nc3 axb5 6 Nxb5 Ba6 7 Nc3 d6 8 g3 g6 9 Bg2 Bg7 10 e4 OoO 11 Nge2 Nbd7 12 OoO Qb6 13 Kh1 Ne5 14 Rb1 Nd3 15 Bd2 Ng4 16 Be1 Rfb8 (Why does White ever allow the Benko?) 17 h3 Nxe1 18 Qxe1 Bxc3 19 Nxc3 Bxf1 20 Bxf1 Ne5 21 Kg2 Qb4 22 Qe2 c4 23 Qe3 Nd7 24 Qd4 Nb6 25 b3 Ra3 26 Bxc4 Rc8 27 Nb5 Rxa2 28 Qxb6 Rxc4 29 e5 Rcc2 0-1 (Now you know what it's like on the inside of a pincushion.)

That's what happened in most of the Master games this round, with two exceptions: Bruce Robison (2010) and Morrell played a quiet draw, while Paul Bauerle played the game of his life:

PAUL BAUERLE (2002)—KEVIN NOREN (2234): 1 d4 Nf6 2 c4 e6 3 Nc3 Bb4 a3 Bxc3+ 5 bxc3 c5 6 e3 Nc6 7 Bd3 OoO 8 Ne2 b6 9 e4 Ne8 10 OoO Ba6 11 f4 Na5 12 f5 f6 13 Nf4 Qe7

WHITE TO PLAY

14 Ng6!! hxg6 15 fxg6 f5 16 e5 Qh4 17 Rf4 Qg5 18 Rxf5! Qxf5 19 Bxf5 Rxf5 20 g4! (The second wave.) Rf8 21 Qd3 Bxc4 22 Qh3 Rf1+ 23 Kg2 Rxc1 24 Rxc1 d6 25 Rc2! (The attack that wouldn't die!) Bd5+ 26 Kg1 Be4 27 Qh7+ Kf8 28 Rf2+ Ke7 29 Rf7+ Kd8 30 Qh4+ Kc8 31 Qe7 Bc6 32 exd6 1-0



Michigan Open

CONTINUED FROM PRECEDING PAGE

A quickie from down below, and we'll then go to our first leader board:

THOMAS TRIPLETT (1883)--BRAD IVERSON (1574): 1 e4 c5 2 c3 d5 3 exd5 Qxd5 4 Nf3 Nc6 5 Be2 Nf6 6 Oo g6 7 d3 Bg7 8 Be3 b6 9 d4 cxd4 10 Nxd4 Nxd4 11 Bxd4 Bb7 12 Bf3 Qd7 13 Bxb7 Qxb7 14 Nd2 Oo 15 Nf3 Rad8 16 Qe2 Rfe8 17 Rfe1 e5 18 Nxe5! Nd7 (Hey, you can't take that pawn!) 19 f4 (Wanna bet?) f6 (You're on!) 20 Qc4+! (Paging Philidor!) 1-0

Only 16 perfect scores, and none below Expert:

3 : Ray Stone, Lawrence Chachere, Eric Fischvogt, David Hahn, Steve Andrews, John Wygrecki, Kevin Czuhai, Dexter Thompson, Andrew Beider, Tom Mazuchowski, John Norcross, Glenn Good, Mohammed Bagherabadi, Greg Bailey, Ed Bennett, Paul Bauerle.

OPEN SECTION, ROUND 3

| | | | |
|---------------|---------------|------------|------------|
| 1 Mazuchowski | 0 Stone | 5 Norcross | 0 Andrews |
| 2 Chachere | 1 Beider | 6 Bennett | 0 Wygrecki |
| 3 Fischvogt | 1 Bagherabadi | 7 Czuhai | 1 Bailey |
| 4 Good | 0 Hahn | 8 Bauerle | 0 Thompson |

Masters 8, Rest of the Field 0. No suprise winners this year, I'll bet. As usual, Stone was impressive:

TOM MAZUCHOWSKI (2126)--RAY STONE (2436): 1 e4 c5 2 Nf3 e6 3 d4 (A bit of a suprise; I've rarely seen Maz play an open Sicilian.) cxd4 4 Nxd4 Nf6 5 Nc3 d6 6 Be3 Be7 7 Bd3 a6 8 f4 b5 9 a4 b4 10 Na2 d5 11 e5 Ne4 12 Bxe4 dxe4 13 Nb3 Nd7 14 a5 Oo (Which will be more important: the slightly weak Black pawns, or the offside White knights?) 15 Oo Bb7 16 Qd4 Rc8 17 Rfd1 Bd5 18 Qd2 Rc4 19 c3 Qb8 20 Nd4 Rfc8 21 b3 bxc3 22 Qe2 R4c7 23 Qxa6 Nc5 24 Qf1 Nxb3 25 Nxb3 Bxb3 26 Rdc1 Ba3 27 Bb6 Bxa2 28 Bxc7 Qxc7 29 Rxa2 Bxc1 30 Qxc1 Qc5+ 31 Kf1 c2 32 Ke1 Qg1+ 0-1 (33 Kd2 Qf2 is a very cute mate.)

Andrew Beider has been relatively inactive since tying for first in the 1982 Open; nere, he quickly blew an exchange. I didn't get a scoresheet for board 3, so let's check out board 4:

GLENN GOOD (2103)--DAVID HAHN (2281): 1 e4 g6 2 d4 Bg7 3 Nf3 d6 4 Bd3 Nc6 5 c3 Nf6 6 Oo Oo 7 h3 e5 8 Be3 Nh5 9 Re1 Nf4 10 Be2 h6! 11 dxe5 dxe5 12 Qxd8 Rxd8 13 Na3 a6 14 Rad1 Be6 15 b3 g5 16 Rxd8+ Rxd8 17 Rd1? (Innocent, and immediately fatal.) Ne2+ (First things first!) 18 Kf1 Rxd1+ 19 Bxd1 Nxc3 20 Be2 Nxa2 21 Bc4 Bxc4+ 22 Nxc4 Nc3 23 Nfd2 f6 24 f3 Bf8 25 Nb2 Kf7 26 Nd3 h5 27 Nc4 b5 28 Ncb2 Na2 0-1

Andrews won after a violent time scramble, while the Masters just collected free pieces in the other affairs. Passing on to the 2½ pointers we find just three: #11 Carlton Thomas (2197), Tom Ward (who upset Morrell this round), and the miracle A-player in John Schoonmaker (whose record to date showed a draw with Gary Kitts, and wins over Mike Kebrdle and Jason Morris).

Ever see a Benko Gambit win in 10 moves?

DUANE CROEL (1634)--DELANDEER JOHNSON (1838): 1 d4 Nf6 2 c4 c5 3 d5 b5 4 Nc3 b4 5 Nb1?! d6 6 Nf3 g6 7 g3 Bg7 8 Bg2 Nbd7 9 Nbd2 Nb6 10 b3?? Nfxd5! 0-1 (White loses the exchange.)

Well, now you have!

3 : Stone, Chachere, Fischvogt, Hahn, Andrews, Wygrecki, Czuhai, Thompson
2½: Carlton Thomas, Ward, Schoonmaker

OPEN SECTION, ROUND 4

| | |
|---------------|-------------|
| 1 Stone | 1 Andrews |
| 2 Wygrecki | 1 Chachere |
| 3 Thompson | 1 Fischvogt |
| 4 Hahn | ½ Czuhai |
| 5 Ward | 0 C. Thomas |
| 6 Schoonmaker | 0 Noren |

Again, Stone made it look easy:

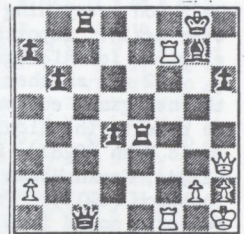
RAY STONE (2436)--STEVE ANDREWS (2246): 1 d4 Nf6 2 c4 g6 3 Nc3 Bg7 4 e4 d6 5 Nf3 Oo 6 Be2 Nc6 7 Oo e5 8 d5 Ne7 9 Ne8 10 Nd3 f5 11 f4 fxe4 12 Nxe4 Nf5 (12...c6 or 12...Nf6 look more reasonable.) 13 fxe5 dxe5 14 Bg5! Nf6 (14...Qd7 15 Ndc5 Qf7 16 g4 wins.) 15 g4 Nd4 16 Nxe5 Nxe2+ 17 Qxe2 Qe7 18 Nxf6+ Bxf6 19 Rxf6 Rxf6 20 Bxf6 Qxf6 21 Rf1 Qg5 22 h3! (The threat of 23 Nf7 is decisive, and Black is totally helpless to stop it.) h5 23 Nf7 Bxg4 24 hxg4 Qh4 25 Nh6+ Kg7 26 Rf7+ Kxh6 27 Qe3+ Qg5 28 Rh7+ 1-0

Meanwhile, Wygrecki was getting away with one ... I think.

JOHN WYGRECKI (2244)--LAWRENCE CHACHERE (2377) 1 Nf3 c5 2 b3 Nc6 3 Bb2 Nf6 4 e3 e6 5 d4 d5 6 Nbd2 Be7 7 c4 Oo 8 Bd3 b6 9 Ne5 Bb7 10 Nxc6 Bxc6 11 Oo cxd4 11 exd4 Bd6 13 Re1 Rc8 14 Nf3 Qe7 15 Ne5 Bb7 16 Re3 Rfd8 17 Rh3 dxc4 18 bxc4 Be4 19 Bxe4 Nxe4 20 Qe2 Nf6 21 f4 Qb7 22 d5 exd5 23 Ng4 Nxg4 24 Qxg4 Bc5+ 25 Kh1 d4 26 f5 Qe7 27 Rf1 Re8 28 Qh5 h6 29 Bc1 Qe2 30 Rhf3 Bf8 31 Qg4 Re4 32 Qh3 Qxc4 33 f6 Qxc1 34 fxg7 Bxg7 35 Rxf7

BLACK TO PLAY

(A very ugly position to try and play this close to the time control! I don't see a clear win for Black myself; for instance, 35...Re1 36 Rxg7+! and White has a perpetual check. But Black finds worse:) 35...Qc6?? 36 Qg3 1-0



You may remember that Thompson crushed Fischvogt in around 10 moves at the 1987 Open. Here, it took 61; Dexter got one of those rook vs. 2 pieces endings he always seems to get, and somehow won, as usual.

Hahn and Czuhai played a solid draw, while Carlton Thomas showed why he should get a solid Master rating s

TOM WARD (2094)--CARLTON THOMAS (2197): 1 e4 e6 2 d4 d5 3 Nc3 Bb4 4 Bd2 Ne7 5 Qg4 Oo 6 e5 Nf5 7 Bd3 f6 8 Nf3 Nc6 9 Oo Bxc3 10 Bxc3 fxe5 11 dxe5 Qe7 12 Rhe1 Qc5 13 Bxf5 Rxf5 14 Qh4 Bd7 15 Ng5 h6 16 Ne4 Qf8 17 Qg3 Kh8 18 Nd2 Be8 19 Nf3 Bh5 20 Rd3 Bxf3 21 Rxf3 Rxf3 22 gxf3 b5 23 Qg6 Re8 24 Bd2 Re7 25 Qd3 Qb8 26 Qg6 Qe8 27 Qg4 Qf7 28 Qg3 Nd4 29 f4 c5 30 Qc3 Rc7 31 Qd3 Qf5 32 Qxf5 Nxf5 33 b3 c4 34 c3 cxb3 35 axb3 Nd4 36 Kb2 Nf3 37 Rd1 Nxd2 38 Rxd2 Kh7 39 Rd3 Kg6 40 f3 Kf5 41 Rd4 a6 42 Kc2 a5 43 Kd2 g5 44 fxg5 hxg5 45 Rg4 Rh7 46 Ke3 Rxb2 47 Kd4 Rb2 48 c4 bxc4 49 bxc4 Rb4 50 Rg1 Rxc4+ 51 Kd3 g4 52 fxg4+ Rxg4 53 Ra1 a4 54 Kd2 Kxe5 55 Ra3 Kd6 0-1

Moving on to the near contenders at 4 points, we find this nice little attack:

MIKE KEBRDLE (2130)--BRUCE ROBISON (2010): 1 c4 Nf6 2 g3 e6 3 Nf3 d5 4 b3 Nbd7 5 Bg2 c6 6 Bb2 Bd6 7 d3 Oo 8 Oo Re8 9 Nc3 e5 10 e4 d4 11 Ne2 a5 12 a3 Nf8 13 h3 h6 14 Ne1 Ne6 15 Bc1 Nh7 16 Kh2 Qc7 17 Nc2 c5 18 Bd2 Bd7 19 Qc1 b5 20 f4 f6 (I like the way in which fifteen pawns have moved by move 20!) 21 f5 Nef8 22 g4 a4 23 Rb1 axb3 23 Ne1 b2 25 Rxb2 Rxa3 26 cxb5 Qb6 27 Nf3 Kh8 28 Bxh6!! (Surprise! The follow-up is not that obvious.) gxh6 29 Qxh6 Rxd3 30 g5 Bxf5 (30...fxg5 31 f6 wins tons of stuff.) 31 Nh4! (Avoiding the complications of 31 exf5 e4+) Ne6 32 gxf6 Qc7 33 Rxf5 Qf7 34 Bf3 Bf8 35 Ng6+ Kg8 36 Nxf8 Rxf8 37 Bh5 Qd7 38 f7+ Kh8 39 Bg6 1-0 (Time, and just in the nick of.)

And here's one of the hairiest games of the weekend:

JAMES RISEMAN (1963)--JOHN NORCROSS (2123): 1 d4 Nf6 2 c4 g6 3 Nc3 Bg7 4 e4 d6 5 f3 Nc6 6 Be3 a6 7 Bd3 e5 8 Nge2 exd4 9 Nxd4 Oo 10 Qd2 Re8 11 Oo Bd7 12 Be2 Nxd4 13 Bxd4 b5 14 Nd5 bxc4 15 Bxc4 Bc6 16 Bxf6 Bxf6 17 Nxf6+ Qxf6 18 h4 Ba4 19 Rde1 Re5 20 Bd5 c6 21 f4 Rh5 22 g4 Rxh4 23 g5 Qxf4 24 Bxf7+ Qxf7 25 Rxh4 Qxa2 26 Qc3 Rb8 27 Qa3 Qc4+ 28 Qc2 29 Qa3 Qc4+ 30 Qc3 Qa2 31 Qc3 ½-½ (Actually, Black might have reasonable chances in the ending after trading queens on a3.)

Continued on next page

Michigan Open

CONTINUED FROM PRECEDING PAGE

Dropping out of contention was the 1987 Champ, Louie Baze; a loss to Chicagoan Sandy Zabell put him at 2-2. In contention were these fellows:

- 4 : Stone, Wygrecki, Thompson
 3½: Hahn, Czuhai, Carlton Thomas
 3 : Chachere, Fischvogt, Andrews, Noren, Zabell, Morgan
 Everett, Kitts, Paul Shields, Bagherabadi, Bennett,
 Bauerle, Stan Golonka

OPEN SECTION, ROUND 5

| | | | |
|-------------|-------------|---------------|-----------|
| 1 Wygrecki | 0 Stone | 6 Andrews | 0 Bauerle |
| 2 Hahn | ½ Thompson | 7 Noren | 1 Bennett |
| 3 Czuhai | 0 C. Thomas | 8 Bagherabadi | 1 Zabell |
| 4 Chachere | ½ Kitts | 9 Golonka | 0 Everett |
| 5 Fischvogt | ½ Shields | | |

Wygrecki's turn to encounter the Stone Guest:

JOHN WYGRECKI (2244)--RAY STONE (2436): 1 e4 c5 2 f4 g6 3 c4 Nc6 4 Nc3 Bg7 5 d3 d6 6 Be2 e6 7 Nf3 Nge7 8 00 00 9 g4 (Chess is not skittles.) f5 10 gxf5 gxf5 11 Be3 Ng6 12 e5 b6 13 exd6 Qxd6 14 Ng5 Nd4 15 Bh5 Bb7 16 Nce2 Qc6 17 N5f3 Rad8 (Black thoroughly controls the gaping slashes left by the mad White advance; it soon gets grisly.) 18 Ng3 e5 19 Ne1 exf4 20 Bxf4 Nxf4 21 Rxf4 Bh6 22 Bf3 Nxf3+ 23 Rxf3 Rde8 24 Nxf5 Rxf5! 25 Rxf5 Rxe1+ 26 Kf2 Rxd1 0-1

A sure sign of the lack of upsets was that Hahn and Thompson met in round 5 instead of their normal round 7. A draw through excessive trading resulted after 30 moves. When up a piece, Czuhai made an unsound rook sacrifice in time pressure against Thomas and went down to defeat.

Board 4 was an uneventful draw, while Fischvogt and Shields took an eventful route to the same result. A rusty Andrews played poorly, and Bauerle copped his second scalp.

Noren grabbed a pawn, and easily refuted some desperation. Bagherabadi piled on the pressure to win material, while Everett took a funny little game.

All of which, plus other results, leaves this situation going into Labor Day:

- 5 : Stone
 4½: Thompson, C. Thomas
 4 : Hahn, Wygrecki, Noren, Everett, Bagherabadi, Bauerle
 3½: Chachere, Fischvogt, Czuhai, Kebrdle, Kitts, Paul
 Shields, Greg Bailey, Moody, Paris Jirjis, Stan
 Jarosz, Riseman, Steve Mellen

OPEN SECTION, ROUND 6

| | | | |
|---------------|------------|------------|-------------|
| 1 Stone | ½ Thompson | 6 Bailey | 0 Fischvogt |
| 2 C. Thomas | 0 Hahn | 7 Jirjis | 0 Czuhai |
| 3 Everett | 0 Noren | 8 Riseman | 0 Kebrdle |
| 4 Bagherabadi | 0 Wygrecki | 9 Kitts | 0 Jarosz |
| 5 Bauerle | 0 Chachere | 10 Shields | 1 Moody |
| | | 11 Zabell | 1 Mellen |

Very odd results—it was an advantage to be Black this round! (Note who broke the pattern...)

Give Dexter credit: he fears nobody. Even with Black he took the battle to Stone, and another draw by exhaustion of material resulted. No 7-0 at least.

That meant that Carlton Thomas had a chance to set himself up as the 1988 Miracle Expert, but no such luck:

CARLTON THOMAS (2197)--DAVID HAHN (2281): 1 e4 g6 2 d4 Bg7 3 Nc3 d6 4 Be3 Nf6 5 h3 c5 6 dxc5 Qa5 7 Qd3 00 8 Qb5 Qc7 9 cxd6 exd6 10 Qc4 Nc6 11 000 Be6 12 Qa4 a6 13 Nd5 Bxd5 14 exd5 b5 15 Qb3 Ne7 16 g4 Rfc8 17 Bg2 a5 18 Nge2 a4 19 Qc3 Qb7 20 Qd3 b4 21 Kb1 b3 (You'll take this b-pawn whether you want to or not!) 22 cxb3 axb3 23 Qxb3 Qa6 24 Nc3 Rab8 25 Bf1 Qa5 26 Qa4 Qxc3 27 Bb5 Nfxd5 27 Bd4 Bxd4 29 Qxd4 Rxb5 0-1

Noren was at his unruffled best:

MORGAN EVERETT (2108)--KEVIN NOREN (2234): 1 d4 Nf6 2 Nf3 d5 3 c4 dxc4 4 Nc3 c6 5 a4 Bf5 6 e3 e6 7 Bxc4 Bb4 8 00 00 9 Bd3 a5 10 e4 Bg4 11 e5 Nd5 12 Ne4 Be7 13 Bb1 Na6 14 Qe2 Nab4

15 Ng3 f6 16 h3 Bxf3 17 Qxf3 f5 18 Nh5 Rf7 19 g4 g6 20 Ng3 Nc7 21 Kh2 Qd5 22 Qd1 Rd8 23 gxf5 exf5 24 Rg1 Kf8 25 Bh6+ Ke8 26 Ne2 Ne6 27 Nc3 Qxd4 28 Qe2 Nf4 29 Qf3 Nfd3 30 Bxd3 Nxd3 31 e6 Qe5+ 32 Kh1 Qxe6 33 Rad1 Qc4 34 Be3 Bb4 35 Bb6 Rdd7 36 Ne2 Qd5 37 Nd4 Nxf2+ 0-1

Wygrecki settled matters early:

MOHAMMED BAGHERABADI (2073)--JOHN WYGRECKI (2244): 1 d4 Nf6 2 Nc3 g6 3 e4 d6 4 f3 Bg7 5 a4 Nfd7 6 Bc4 c5 7 Be3 Nc6 8 Nge2 00 9 Qd2 cxd4 10 Nxd4 Nde5 11 Bb3 Na5 12 00 Nec4! (Winning a piece out of nowhere.) 13 Qe2 Nxe3 14 Qxe3 Qb6 15 Rfd1 Nc6 16 Nce2 e5 17 Nf5 gxf5 18 Qxb6 axb6 19 Rxd6 fxe4 20 fxe4 Bg4 21 Ng3 Rad8 22 Rxd8 Rxd8 23 h3 Be6 24 Bxe6 fxe6 25 Ra3 Bf8 26 Rf3 Be7 27 c3 Rd2 28 b4 Ra2 29 Nh5 Rxa4 30 Rg3+ Kf8 31 Rg7 Ra3 32 Rxb7 Rxc3 33 b5 Nd4 34 Rh8+ Kf7 35 Rb8 Rc7 36 g4 Nxb5 37 Rh8 Nd6 38 h4 Rc1+ 39 Kg2 Bxb4 40 Rh7+ Kg6 41 Rg7+ Kh6 42 Rd7 Nxe4 43 Rxb7 Rb1 44 Rb8 Ng5 (And, finally, pride is satisfied.) 0-1

Bauerle became another Benko Bustee. Fischvogt had some fun, at long last:

GREG BAILEY (2071)--ERIC FISCHVOGT (2289): 1 d4 d5 2 c4 c6 3 Nf3 e6 4 exd5 exd5 5 Qc2 Bd6 6 Nc3 Nd7 7 g3 Ngf6 8 Bg2 00 9 00 Re8 10 Nh4 Nf8 11 Bg5 Ne6 12 Bxf6 Qxf6 13 e3 g6 14 a3 Ng5 15 b4 Nh3+ 16 Kh1 g5 17 Nf3 Bf5 18 Qd2 Re6 19 b5 Rae8 20 bxc6 bxc6 (White has a good ending, if he lives that long.) 21 Ng1 Qh6 22 Nhx3 Bxh3 23 Ne2 Bf5 24 Rfc1 Qh5 25 Kg1 Rh6 26 f4 Qxh2+ 27 Kf2 Be4 28 Rg1 Ree6 29 Qa5 gxf4 30 Nxf4 Bxf4 31 exf4 Bxg2 32 Rxg2 Re2+! (Page the hearse!) 33 Kxe2 Qxg2+ 34 Kd3 Qf3+ 35 Ke2 Rh2+ 0-1

Jirjis was a rook up on Czuhai's Dragon Sicilian, missed an easy defense and lost. Riseman, harking back to his 1987 form, lost the longest game of the round to Kebrdle. Jarosz's methodical style was in fine fettle:

GARY KITTIS (2088)--STAN JAROSZ (2003): 1 e4 c5 2 Nc3 Nc6 3 g3 g6 4 Bg2 Bg7 5 f4 d6 6 Nf3 e6 7 00 Nge7 8 d3 00 8 Be3 Nd4 10 Qd2 Nec6 11 Nd1 Qa5 12 c4 Qxd2 13 Bxd2 Nc2 14 Rc1 N2b4 15 Bc3 Nxa2 16 Bxg7 Nxc1 17 Bxf8 Kxf8 18 Nf2 Ne2+ 19 Kh1 Ned4 20 g4 Nxf3 21 Bxf3 Nd4 22 Bd1 Bd7 23 g5 b5 24 b3 b4 25 Ng4 Bc6 26 Nf6 Kg7 27 Rf2 h5 28 Kg1 a5 29 Ra2 Nxb3! 30 Bxb3 a4 31 Bd1 b3 32 Ra3 Rb8 33 Kf2 b2 34 Bc2 b1Q 35 Bxb1 Rxb1 (The real point of the sacrifice is the decisive activity of the Black rook. Note the magnificent sway of the knight on f6.) 36 Ke3 Rb2 37 e5 dxe5 38 fxe5 Rxh2 39 Ne4 Rh3+ 40 Kf4 Rh4+ 41 Kg3 Rg4+ 42 Kf3 Rxg5 0-1

I managed to lose a pawn to Shields! King's Gambit, and was ground down in the ending. Let's head into the Championship Round with this situation:

- 5½: Stone
 5 : Hahn, Wygrecki, Noren, Thompson
 4½: Chachere, Fischvogt, Czuhai, C. Thomas, Kebrdle,
 P. Shields, Jarosz

And remember: Stone and Chachere cannot win the title.

OPEN SECTION, ROUND 7

- 1 Hahn-----Stone
 2 Wygrecki-Noren
 3 Thompson-Chachere
 4 Kebrdle--Fischvogt
 5 Czuhai---Shields
 6 Jarosz---C. Thomas

OK, you have to figure Hahn and Thompson will have trouble winning, so, if Wygrecki and Noren draw, Groeller will have to calculate tiebreaks and fume. Well, as it turned out, all six games were decisive. We start on board 6, which would help settle the Expert Prize, if nothing else:

STAN JAROSZ (2003)--CARLTON THOMAS (2197): 1 d4 Nf6 2 c4 g6 3 Nc3 Bg7 4 Nf3 d6 5 g3 00 6 Bg2 Bg4 7 h3 Be6 8 d5 Bd7 9 00 Qc8 10 Kh2 e5 11 e4 h6 12 Nd2 Nh7 13 h4 f5 14 b4 f4 15 c5 Nf6 16 Qb3 Ng4+ 17 Kg1 fxg3 18 fxg3 Rxf1+ 19 Nxf1 Qf8 20 Nd1 dxc5 21 d6+ Kh7 22 bxc5 cxd6 23 Qxb7 Bc6 24 Qc7 dxc5 25 Ba3 Qf6 26 Bxc5 Na6 27 Qa5 Nxc5 28 Qxc5 Bf8 29 Qc4 Bd7 30 Qc7 Qb6+ 31 Qxb6 axb6 32 Bh3 Bc5+ 33 Kg2 Bd4 34 Rc1 Rxa2+ 35 Kh1

Continued on next page

Michigan Open

CONTINUED FROM PRECEDING PAGE

Bc5 36 Rb1 Bc6 37 Nc3 Nf2+ 38 Kh2 Rc2 0-1 (White loses at least a piece, with a collapsing position.)

One win for Black, as Carlton moves into 5½ country. Board 5 saw a Master-Expert showdown; Czuhai is a perennial bridesmaid, Shields recovering from a round 1 loss:

KEVIN CZUHAI (2219)--PAUL SHIELDS (2077): 1 e4 Nf6 2 e5 Nd5 3 c4 Nb6 4 c5 Nd5 5 Bc4 e6 6 Nc3 Nxc3 7 dxc3 Nc6 8 Qh5 g6 9 Qe2 Bxc5 10 Nf3 b6 11 Bh6 Bf8 12 Bxf8 Rxf8 13 000 Bb7 14 Rd2 Qe7 15 Rhd1 000 16 Ba6 d5 17 exd6 Rxd6 18 Qb5 Bxa6 19 Qxa6+ Kb8 20 Rxd6 cxd6 21 h4 (A futile gesture; Black has survived the worst, and must now merely consolidate.) Rd8 22 a4 d5 23 Qb5 Rc8 24 Kb1 Qf6 25 Ka2 Qf4 26 Rd3 h6 27 g3 Qc1 28 b4 Nxb4+! 29 Qxb4 Qc2+ 30 Ka3 Qxd3 31 Kb2 Qc4 32 Qd6+ Kb7 33 Qe5 Qxa4 34 h5 Rc5 35 Nd4 Qc4 36 Qe3 Ra5 37 hxg6 Qa2+ 38 Kc1 Qa1+ 39 Kd2 Ra2+ 40 Nc2 Qb2 41 Qd3 Qxc2+! 42 Qxc2 Rxc2+ 43 Kxc2 fxc6 (Before I forget...) 0-1

Two wins for Black, and another Expert on 5½. Can Kebrdle make it three?

MIKE KEBRDLER (2130)--ERIC FISCHVOGT (2289): 1 c4 e5 2 g3 Nc6 3 Bg2 Nf6 4 d3 Bc5 5 e3 00 6 Nc3 Re8 7 Nge2 d6 8 00 a6 9 a3 Bf5 10 b4 Ba7 11 Nd5 Nxd5 12 cxd5 Ne7 13 h3 c6 14 dxc6 bxc6 15 Bb2 Qd7 16 Kh2 Ng6 17 Rc1 Rac8 18 e4 Be6 19 d4 f6 20 f4 exf4 21 Nxf4 Nxf4 22 Rxf4 d5 23 e5 fxe5 24 dxe5 Be3 (Ooops!) 25 Rh4 Bxc1 26 Bxc1 c5 27 Qd3 g6 28 bxc5 Rxc5 29 Be3 Rc4 30 Rh6 Bf7 31 Bf4 Kg7 32 Rh4 Qf5 33 Bh6+ Kg8 34 Qxd5 0-1

Now, we come to Dexter Thompson, champion in 1986, nearly champion in 1985 and 1987. As usual, Dexter got the strongest schedule: he has now played #1, 2, 3 and 4. And he needs a win, not that Thompson ever plays for anything else:

DEXTER THOMPSON (2211)--LAWRENCE CHACHERS (2377): 1 e4 e6 2 d4 d5 3 e5 c5 4 c3 Nc6 5 Nf3 Qb6 6 Be2 cxd4 7 cxd4 Nh6 8 Nc3 Nf5 10 Na4 Bb4+ 10 Bd2 Qa5 11 Bc3 b5 12 a3 Bxc3 13 Nxc3 b4 14 axb4 Qxb4 15 Bb5 Bd7 16 Bxc6 Bxc6 17 Qd2 00 18 00 Rfb8 19 g4 Ne7 20 Rfb1 a5 21 Ng5 h6 22 Nf3 Be8 23 h4 Rc8 24 h5 a4 25 g5 hxg5 26 Qxg5 a3 27 h6 Ng6 28 hxg7 Kxg7 29 Ne2 axb2 30 Rxa8 Rxa8 31 Nf4 Ra1 32 Qf6+ Kg8 33 Nxc6 (Just one move short!) Rxb1+ 34 Kg2 fxc6 35 Qxe6+ Bf7 36 Qc8+ Kg7 37 e6 Rg1+ 38 Nxc1 b1Q 39 exf7 Kxf7 40 Qd7+ Qe7 41 Qxd5+ Qe6 42 Qf3+ Qef5 43 Qg3 Qbe4+ 44 f3 Qef4 0-1

And as Thompson sinks slowly in the west, we turn our attention to the top two boards. Will Stone win the event outright, or will Hahn once again qualify for the title which has so often just eluded him?

DAVID HAHN (2281)--RAY STONE (2436): 1 d4 Nf6 2 c4 c5 3 d5 e6 4 Nc3 exd5 5 cxd5 d6 6 e4 g6 7 f3 Bg7 8 Bg5 00 9 Qd2 h6 10 Be3 (10 Bxh6 Nxe4 and 11...Qh4+) a6 11 a4 Re8 12 Nge2 Nbd7 13 Nc1 Ne5 14 Be2 Rb8 15 00 g5 16 g4 Ng6 17 Nd3 Nd7 18 Ne1 Be5 19 Nc2 Qf6 20 Na3 Bf4 21 Rab1 Bxe3+ 22 Qxe3 Nf4 23 a5 Ne5 24 Nc4 Nxc4 25 Bxc4 b5! 26 axb6 Rxb6 27 b3 Bd7 28 Na4 Rb4 29 Bxa6 Nxd5 30 Qd2 Nf4 31 Nxc5 dxc5 32 Qxd7 Rd8 (This is why I love Benonis: Black wins the kingside, cracks open the queenside, then crashes through in the center and mates White. A real Benoni game!) 33 Qc7 Rd2 34 Qxc5 Qxa6! 35 Qxb4 Rg2+ 36 Kh1 Rxh2+! 37 Kg1 Qe2 38 Qb8+ Kh7 0-1 (Time!)

Well, that's 5-0 for Black so far. More important: Stone clinches first place in the tournament at 6½, and board 2, Wygrecki--Noren, is for all the marbles. The winner will be the 1988 Michigan Open champion.

It's a tense situation. Wygrecki first came into real attention when he nearly copped the 1982 crown as an A-player, ending with the memorable marathon against Gajic. Noren has been a contender for years, but has always been destined to be close, but not close enough.

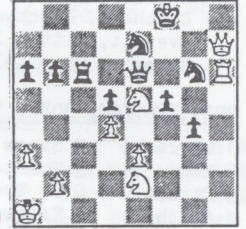
Noren has Black, which might be an advantage the way things have gone so far, but let's look...

JOHN WYGRECKI (2244)--KEVIN NOREN (2234): 1 Nf3 g6 2 g3 Bg7 3 Bg2 c5 4 c3 e5 5 d4 cxd4 6 cxd4 e4 7 Nfd2 d5 8 Nb3 Nc6 9 Nc3 Nze7 10 e3 h5 11 h4 Bg4 12 f3 exf3 13 Bxf3 Qd6 14 Rr1

Bxf3 15 Qxf3 00 16 Bd2 a6 17 g4 Nb4 18 000 hxg4 19 Rxc4 Rac8 20 Kb1 Qc6 21 h5 b6 22 h6 Bxh6 23 Rh1 Bg7 24 Rgh4 Qe6 25 Rh7 Rfd8 26 a3 Nbc6 27 Ka1 f5 28 Qf1 Ra8 29 Qf4 Qd6 30 Qh4 Qf6 31 Qh2 Ra7 32 Be1 g5 33 Qg2 Kad7 34 Ne2 Ng6 35 R7h5 g4 36 Rf1 Nce7 37 Bg3 Qe6 38 Qf2 Rf8 39 Nbc1 Rc8 40 Nc3 Rdd8 41 Nd3 Rf8 42 Rfh1 Kf7 43 Rh7 Kg8 44 Qh2 Rf7 45 Be5 Bxe5 46 Nxe5 Rxh7 47 Qxh7+ Kf8 48 Rh6 Rc6 49 Ne2

BLACK TO PLAY

The tension was unbearable. Fittingly, this was the last game to finish, and there were a dozen spectators or so hovering around the board. Gradually, the truth sunk in: there is nothing to be done about the decisive threat of 50 Nf4. As Noren thought and thought, the crowds diplomatically crept away: he conceded the game and championship to John Wygrecki in comparative solitude.) 1-0



To conclude: Stone wins it alone at 6½, to nobody's surprise. John Wygrecki, the sole player on 6, is the 1988 Michigan Champion, and wins qualification into the Michigan Invitational. Eric Fischvogt gets the second place trophy, Carlton Thomas the third, and Paul Shields the top Expert trophy. Lawrence Chachers, who tied them on 5½, splits third place money with Fischvogt, while Thomas and Shields split Expert money. The second Expert trophy drops to Tom Mazuchowski. Top A was James Riseman (4½), while James Lewis (1339!?) took top under 1800.

Leave us not forget the 5-pointers, all of whom came close: Thompson, Hahn, Noren, Mazuchowski, Morgan Everett (he's up here every year, it seems!), and Paul Bauerle. It was Bauerle who got the most bizarre pairing of the tournament, getting paired with 1-pointer Matt Bolda in the last round! This was the result of the Merry Mohammed Mixup. Before the last round pairings were made, the TD's got a call: "Mohammed is withdrawing." Naturally (I would have too!), they dropped Azziem Mohammed out of the Reserve Section.

Naturally, about 4:15, Azziem is running around trying to find his pairing, while Bauerle is wondering why his opponent, Mohammed Bagherabadi, is not showing up. Huge case of OOPS!

Well, Bauerle was assigned to play Bolda, who was getting a bye otherwise, while Azziem Mohammed just got a free point since he had already played the fellow getting the bye in the Reserve Section. There must be a moral, but I can't think of one offhand.

PRIZE WINNERS - OPEN SECTION

1st \$500 . Ray Stone, Canada
 2ns \$300 & Mich.Champion Trophy, John Wygrecki
 3rd \$100 & Tr.Eric Fischvogt
 100 Lawrence Chachers, Ill.
 Exp.\$125 & Tr.Carlton Thomas
 125 & Tr.Paul Shields
 Trophy Tom Mazuchowski

1st "A" \$150 & Tr. James Riseman
 2nd "A" 11.11 ea. John Schoonmaker, Tom LaForge,
 Rea Hayes, Richard Sandborn, Steve Scott,
 Bill Calton David Levadi, Olaf Haakonstad,
 Mike Skidmore.
 Under 1800 \$100 & Tr James Lewis

Continued on next page

Michigan Open RESERVE SECTION

(From preceding page)

RESERVE SECTION, ROUND 1

With 124 players, this was the largest Reserve ever. With that many players a premium is put on winning; a draw just about eliminates you from contention for first. In the first round, for instance, only 2 draws out of 60 games! Herewith an example of play:

SHAWN MCINTOSH (1723)--HELMUT LAUMER (1680): (Yes, that's an odd first round pairing: McIntosh replaced a late drop-out.) 1 e4 Nf6 2 e5 Nd5 3 d4 d6 4 Nf3 Bg4 5 Be2 Nc6 6 c4 Nb6 7 Nc3 dxe5 8 d5 Bxf3 9 Bxf3 Nd4 10 c5 Nd7 11 Be3 Nxf3+ 12 Qxf3 g6 13 Rd1 Bg7 14 00 f5 15 g3 00 16 d6 c6 17 Bg5 Bf6 18 Bxf6 Rxf6 19 dxe7 Qxe7 20 b4 e4 21 Qe2 Ne5 22 f3 exf3 23 Qe3 Re8 24 Rfe1 Re6 25 Na4 Qf6 26 Qb3 Kg7 27 Nb2 g5 28 Re3 f4 29 Re4 f2+! 30 Kf1 Qf5 31 Rdd4 Qh3+ 32 Kxf2 Qxh2+ 0-1 (33 Kf1 fxe3 and White can't guard his second rank.)

RESERVE SECTION, ROUND 2

The perfect scores got pared down to 26 this round, but only 5 of the top ten were included. As always, the Reserve Section would prove wide-open for anyone to take. Herewith, a couple of samples of the play:

ROBERT ROSEKRANS (1715)--BOBBI SPENCER (1586): 1 d4 Nf6 2 Nf3 e6 3 Bg5 Be7 4 e3 a6 5 Bd3 d6 6 c3 Nc6 7 Qc2 h6 8 Bh4 e5 9 Nbd2 Bg4 10 Bg3 Qd7 11 dxe5 Nh5 12 exd6 Nxe3 13 hxg3 Bxd6 14 000 Qe6 15 Be4 Kd7 16 Rh4 f5 17 Rxe4! g6 18 Rxe6! (Winning the queen one way or another.) 1-0

HELIO RINCON (1711)--AL DALIMONTE (1576): 1 e4 e5 2 Nc3 Nc6 3 Bc4 Na5!? 4 Bxf7+! (What is this, Hampe--Meitner or something?) Kxf7 5 Qh5+ Ke6 6 Qf5+ Kd6 7 d4 Qf6?? (7...Nc4 might be a move; he can't flee a la Hampe via c6 and b6 to the knight on c3. It would have been interesting.) 8 dxe5+ Qxe5 9 Bf4 Qxf4 10 Qxf4+ Kc6 11 Qxf8 1-0

We'll get into more serious stuff next round; for now, let's just set up the quick starters:

2 : #1 Steve Zubatch, #2 Charles Collins, #3 Jim Mikus, #5 Ron Grzegorzczuk, #6 Kevin Halstead, #8 Robert McCarter, #11 Paul Kolsti, #12 John Blake, #13 Robert Rosekrans, #14 Helio Rincon, #15 Scott Shaler, #19 Christian Staples, #24 Helmut Laumer, #26 Max Ruhlman, #27 Kirk Brinks, #28 Donald Ruark, #30 Ron Gore, #32 John Griffin, #33 Robert Smith, #34 Larry Munger, #39 Mike Hoffman, #41 Ira McClurkin, #52 Mike Venia, #63 Gary Fletcher, #96 Harvey Moore, #113 Jack Lucchesi. Favorites?

RESERVE SECTION, ROUND 3

| | | | |
|------------|----------------|---------------|-------------|
| 1 Zubatch | 1 Ruhlman | 8 Blake | 1 Hoffman |
| 2 Brinks | ½ Collins | 9 McClurkin | 0 Rosekrans |
| 3 Mikus | 1 Ruark | 10 Mike Venia | ½ Rincon |
| 4 Gore | ½ Grzegorzczuk | 11 Shaler | 1 Fletcher |
| 5 Griffin | 0 McCarter | 12 Moore | 0 Staples |
| 6 Halstead | 0 Smith, R. | 13 Lucchesi | 0 Laumer |
| 7 Kolsti | ½ Munger | | |

Fairly normal results, overall, with only one higher-rated player losing. Here's one of the games, in which Black never does get his pawn back:

JIM MIKUS (1777)--DONALD RUARK (1674): 1 e4 c5 2 c3 Nc6 3 Nf3 e6 4 d4 d5 5 exd5 exd5 6 Bb5 Bd7 7 Bxc6 bxc6 8 00 Nf6 9 Bg5 Be7 10 Bxf6 Bxf6 11 dxc5 (Oh, no worry, I'll get it back with no problem.) 00 12 Nd4 Re8 13 Nd2 g6 14 Nf3 Qc7 15 Qd2 Re7 16 b4 Rae8 17 Rfe1 Bg4 18 Rxe7 Rxe7 19 Re1 Kg7 20 Rxe7 Bxe7 21 Qe3 Bf6 22 h3 Bd7 23 g4 h6 24 Kg2 Qd8 25 Qf4 26 Qd6 Qe7 27 Qxe7 Bxe7 28 Ne5 Be8 29 Nxe6 1-0 (As the "extra" pawn will probably promote. Stupid bishops!)

Let's take a look at the lucky leaders and their plucky pursuers:

3 : Zubatch, Mikus, McCarter, Blake, Rosekrans, Shaler, Staples, Laumer, Robert Smith
2½: Collins, Grzegorzczuk, #7 James Starr, #10 Jim Stockham, Kolsti, Rincon, #22 David Sundeen, Brinks, Gore, Munger, Mike Venia, #66 Mike Nikitin

RESERVE SECTION, ROUND 4

| | | | |
|-------------|-----------|----------------|--------------|
| 1 Rosekrans | 1 Zubatch | 7 Grzegorzczuk | 0 Brinks |
| 2 Staples | ½ Mikus | 8 Stockham | 1 Mike Venia |
| 3 McCarter | 1 Shaler | 9 Sundeen | 0 Kolsti |
| 4 Laumer | ½ Blake | 10 Munger | 1 Rincon |
| 5 R. Smith | 1 Starr | 11 Nikitin | 1 Halstead |
| 6 Collins | 1 Gore | | |

The worms turn, with the lower-rated players scoring 6-5 this round. Leading the pack (do worms come in packs?) was this total outplaying of the #1 player:

ROBERT ROSEKRANS (1715)--STEVE ZUBATCH (1789): 1 d4 Nf6 2 Nf3 g6 3 c4 Bg7 4 Nc3 d6 5 e4 00 6 Be2 c5 7 d5 e6 8 Bg5 exd5 9 exd5 Re8 10 Qd2 Bf3 11 00 Qc8 12 Nh4 Ne4 13 Nxe4 Rxe4 14 Nxf5 gxf5 15 Bd3 Re8 16 Qc2 Be5 17 Bxf5 Qc7 18 Bxh7+ Kg7 19 Bf5 Rh8 20 g3 Nd7 21 Bd2 Nf6 22 Bc3 Rh5 23 Bxe5 dxe5 24 f3 Rh8 25 Rf2 b5 26 b3 Qd6 27 Re1 b4 28 Ree2 Nh7 29 Bxh7 R8xh7 30 f4 exf4 31 Rxf4 Rg5 32 Rxf7+! Kxf7 33 Qxh7+ Kf8 34 Qh8+ Kf7 35 Qe8+ Kg7 36 Re7+ 1-0

Sudden death struck on board 6:

CHARLES COLLINS (1781)--RON GORE (1665): 1 c4 Nf6 2 Nc3 e6 3 Nf3 Bb4 4 Qc2 d5 5 cxd5 exd5 6 Nb5 c6 7 Nbd4 Qd6 8 a3 Bc5 9 b4 Bxd4 10 Nxd4 00 11 g3 Nbd7 12 Bg2 Nb6 13 d3 Be6 14 Bf4 Qd7 15 00 Bh3 16 Rac1 Rac8 17 Qd2 Bxg2 18 Kxg2 Rfe8 19 Bg5 Kh8? (Losing by force, if you can believe it!) 20 Bxf6 gxf6 21 Qh6 f5 22 Qf6+ Kg8 23 Nxf5 1-0 (As Black tries to remember the license plate of the truck that clobbered him.)

Paul Kolsti, visiting from Irving, Texas, found the local hospitality to his liking:

DAVID SUNDEEN (1684)--PAUL KOLSTI (1717): 1 e4 e5 2 f4 d5 3 exd5 e4 4 d4 Nf6 5 Nc3 Bf5 6 Nge2 h5 7 Ng3 Bg4 8 Be2 Bb4 9 00 Bxc3 10 bxc3 Qxd5 11 Bxg4 hxg4 12 f5 Nbd7 13 Bg5 000 14 Qe2 Rh7 15 Nxe4 Re8 16 Nxf6 Nxf6 17 Qd3 Reh8 18 Qg3 Ne4 19 Qxg4 Rxh2 20 f6+ Kb8 21 g3 Rh1+ 22 Kg2 Nxf6+ 0-1

Finally, the biggest upset of the top boards. Please skip it if you can't stand the sight of blood:

MIKE NIKITIN (1494)--KEVIN HALSTEAD (1758): 1 d4 f5 2 e3 e6 3 Nf3 Nf6 4 c4 b6 5 Nc3 Bb7 6 Bd3 Be7 7 00 00 8 Re1 Ne4 9 Nd2 Nxd2 10 Bxd2 Bd6 11 Qh5 Rf6 12 e4 fxe4 13 Nxe4 Rf5 (Losing material, but 14 Ng5 promised to be brutal in any case.) 14 Ng5 Qf6 15 Qxh7+ Kf8 16 Bxf5 Qxf5 17 Qh8+ Ke7 18 Qxg7+ Ke8 19 Qg8+ Bf8 20 d5 e5 21 Rxe5+! 1-0 (After 21...Qxe5 White mates in three.)

Full speed ahead, with the following captains:

4 : McCarter, Rosekrans, R. Smith
3½: Collins, Mikus, Stockham, Kolsti, Blake, Staples, Laumer, Brinks, Munger, Nikitin

RESERVE SECTION, ROUND 5

| | | | |
|-------------|------------|-----------|-----------|
| 1 McCarter | 0 R. Smith | 5 Kolsti | 1 Brinks |
| 2 Rosekrans | 0 Collins | 6 Blake | 1 Nikitin |
| 3 Mikus | 1 Laumer | 7 Zubatch | 0 Munger |
| 4 Staples | 0 Stockham | | |

With one day to go, the leader is...Robert Smith, #33? That's like Moody leading the Open Section, for goodness sakes! Well, Smith pulled his third big upset in a row:

BOB MCCARTER (1725)--ROBERT SMITH (1658): 1 d4 d5 2 Nf3 Nf6 3 e3 e6 4 Bd3 Nbd7 5 Nbd2 c5 6 c3 Be7 7 00 b6 8 Re1 Bb7 9 e4 dxe4 10 Nxe4 00 11 Nxf6+ Nxf6 12 Bg5 cxd4 13 Nxd4 Qd7 14 Bxf6 Bxf6 15 Re3 Rfd8 16 Qc2 g6 17 Nf3 Rac8 18 Qe2 Bg7 19 Re1 Rc5 20 Be4 Qc7 21 Bb3 Rh5 22 g3 Qc6 23 Bc2 Qc7 24 Be4 Bh6 25 Rd3 Rxd3 26 Qxd3 Bxe4 27 Rxe4 Rd5 28 Rd4 Rxd4 29 Qxd4

Continued on next page

Michigan Open RESERVE SECTION

(From preceding page)

Bc1 30 Qb4 a5 31 Qb5 Kg7 32 c4 a4 33 Qxa4 Bxb2 34 Qb5 Ba3
35 Qe5+ Qxe5 36 Nxe5 Bc5 37 Nd7 Bd4 38 Kf1 f6 39 Ke2 e5
40 f3 Kf7 41 Nb8 Ke6 42 Nc6 Bc5 43 Kd3 Bg1 44 h3 f5 45 a4
Bc5 46 Kc3 e4 47 fxe4 fxe4 48 Nd4+ Kf6 49 Nb3 Bf2 50 g4 h5
51 Nd2 Ke5 52 Nf1 hxg4 53 hxg4 Kf4 54 Kd2 Kxg4 55 Ke2 Bc5
56 Ne3+ Kf4 57 Nd5+ Ke5 58 Nc3 Kd4 59 Nb1 e3 60 Kd1 Kxc4
61 Kc2 Kb4 62 Nc3 Bd4 63 Nd5+ Kxa4 64 Kd3 Bc5 0-1

Smith stood alone as Rosekrans quickly dropped the exchange to Collins. That seemed to set the scene for this round: Mikus and Stockham received pieces, Nikitin made a bad sack, and Brinks played the Latvian Gambit:

PAUL KOLSTI (1713)--KIRK BRINKS (1676): 1 e4 e5 2 Nf3 f5 (OK, I must admit that Brinks had already won twice with this. Third time is not a charm.) 3 d4 fxe4 4 Bg5 Be7 5 Bxe7 Qxe7 6 Nxe5 Qb4+ 7 Nc3 Nf6 8 Rb1 d6 9 a3 Qa5 10 b4 Qxa3 11 Rb3 Qxb3 12 cxb3 dxe5 13 dxe5 Ng4 14 Bc4 Rf8 15 Nxe4 Bf5 16 Qd5 Nc6 17 Bb5 Ngxe5 18 Qxe5+ Kd8 19 Qd5+ Ke7 20 O0 Rad8 21 Qc5+ Kd7 22 Rd1+ Ke6 23 Bc4+ 1-0

Larry Munger handed Zubatch another loss. Munger is sort of like Dexter Thompson: he always seems to get the strongest opposition in this event. Will this be his year, or will be one of these other guys?

5 : Robert Smith
4½: Collins, Mikus, Stockham, Kolsti, Blake, Munger

RESERVE SECTION, ROUND 6

| | |
|------------|------------|
| 1 Stockham | ½ R. Smith |
| 2 Kolsti | 1 Collins |
| 3 Munger | 0 Mikus |
| 4 McCarter | 0 Blake |

Stockham gave it his best shot; he won a pawn quickly, but Smith held on grimly and was able to draw a lengthy rook and pawn ending. Three players could catch Smith, and three did. Kolsti won an exchange from Collins, then overcame dogged resistance to clinch the point. Mikus took care of Munger a little more quickly:

LARRY MUNGER (1635)--JIM MIKUS (1777): 1 e4 c6 2 d3 d5 3 Nd2 dxe4 4 dxe4 Nf6 5 Nf3 Bg4 6 Be2 Nbd7 7 e5 Nd5 8 O0 e6 9 h3 Bh5 10 c4 Nf4 11 b3 Qc7 12 Bb2 Rad8 13 a3 Nc5 14 Re1 Bxf3 15 Bxf3 Nfd3 (THUD!) 16 Qc2 Nxe1 17 Rxe1 Nd3 (Not you too!) 18 Re2 Nxb2 19 Qxb2 Bc5 20 Ne4 Rd1+ 21 Kh2 Bd4 22 Nd6+ Kf8 23 Qc2 Bxe5+ 24 g3 (A cute little trap: 24...Qxd6 25 Rxe5! But his game is far beyond such pleasantries.) Bxg3+! 25 fxd3 Qxd6 26 Rf2 Rd3 27 c5 Qd7 28 Be4 Rd4 29 Bxh7 f5 30 Bxf5 exf5 31 Rxf5+ Kg8 0-1

Blake became the fourth leader when McCarter OOPSed a piece. Five players reached 5 points, in theoretical contention should there be a lot of draws up top, the big surprise being Don Winslow (who didn't; he won fast):

DON WINSLOW (1584)--JAMES STARR (1733): 1 e4 b6 2 Nc3 Bb7 3 d4 g6 4 Nf3 Bg7 5 Bc4 e6 6 O0 Ne7 7 Bf4 d6 8 Re1 O0 (It looks like White has read Reinfeld, and Black has read Picasso.) 9 Qd2 Re8 10 Bh6 Bh8 11 Ng5 Qd7 12 Qf4 Nec6 13 d5! Na5 14 dxe6! fxe6 15 Bxe6+! Rxe6 16 Qf8#! (And Black will undoubtedly enter a Blue Period.)

5½: Mikus, Kolsti, Blake, R. Smith
5 : Stockham, Rosekrans, David Robinson, George Carpenter, Winslow

RESERVE SECTION, ROUND 7

| |
|----------------------|
| 1 Mikus--Blake |
| 2 Smith--Kolsti |
| 3 Robinson--Stockham |
| 4 Winslow--Rosekrans |
| 5 Carpenter--Sundeen |

To set it up: there is a first and second prize; if there is a draw on either of the first two boards, then six points means something cashwise. Also, Kolsti is not from Michigan, so he can't win a title or trophy.

Well, Carpenter quickly ended his chances, going down to Sundeen. Winslow capped a good tournament with a draw, but would win no more than the C-prize for his performance. Let's check out board 3:

DAVID ROBINSON (1686)--JAMES STOCKHAM (1718): 1 c4 c5 2 e6 3 Bg2 d5 4 cxd5 exd5 5 d4 Nf6 6 Nf3 Nc6 7 Nc3 Be7 8 O0 00 9 dxc5 Bxc5 10 e3 a6 11 Ne2 Be6 12 a3 Qd7 13 b4 Be7 14 Bb2 Rfd8 15 Ned4 Rac8 16 Nxe6 fxe6 17 Qd3 Ne4 18 Rac1 Bf6 19 19 Bxf6 gxf6 20 Rfd1 f5 21 Nd4 Ne5 22 Qf1 Rxc1 23 Rxc1 Nc4 24 Bxe4 fxe4 25 Rc3 Rf8 26 Qh3 Re8 27 Ne2 Nd2 28 Qg4+ Kh8 29 Qf4 Nc4 30 Qf6+ Kg8 31 Qg5+ Qg7 32 Qxg7+ Kxg7 33 Nf4 Kf7 34 h4 Rc8 35 g4 b5 36 Kg2 Nd6 37 Rxc8 Nxc8 38 Ne2 Nd6 39 Nd4 Nc4 40 Nc2 h6 41 f4 exf3+ 42 Kxf3 Kf6 43 Ke2 Ne5 44 g5+ hxg5 45 hxg5+ Kxg5 46 Nd4 Kf6 47 Kd1 Nc4 48 Nc2 Kf5 0-1

Nice game by Stockham, who reaches 6 points. Will it be enough?

ROBERT SMITH (1658)--PAUL KOLSTI (1717): 1 d4 Nf6 2 c4 c5 3 d5 b5 4 cxb5 a6 5 bxa6 Bxa6 6 Nc3 d6 7 g3 g6 8 Bg2 Bg7 9 e4 O0 10 Nge2 Nbd7 11 O0 Ne5 12 h3 Nfd7 13 f4 Nd3 14 Rf3 Nxc1 15 Rxc1 Qb6 16 Qc2 Rfb8 17 Na4 Qa7 18 Kh2?? (How awful! Playing the tournament of your life, and you pitch it all with one stupid move. There will be honor, glory and rating points for Smith, but no cash or trophy.) Bxe2 19 Qxe2 Qxa4 20 Ra3 Qb4 21 Rxa8 Rxa8 22 b3 h6 23 e5 dxe5 24 d6 Ra7 25 dxe7 Nf6 26 Qxe5 Ne8 27 Qe2 Bf6 28 Rc4 Rxe7 29 Qg4 Qd2 30 Rxc5 Re2 31 Qf3 Kg7 32 Ra5 Bd4 33 Ra4 Re3 34 Qb7 Qf2 35 Rxd4 Qxg3+ 0-1

So Paul Kolsti hits 6½, but remember, he's the Ray Stone of this section. The title goes to the winner of the Mikus--Blake game:

JIM MIKUS (1777)--JOHN BLAKE (1716): 1 e4 c5 2 c3 d6 3 Nf3 Nf6 4 d3 h6 5 Nbd2 a6 6 Qb3 Nc6 7 Be2 e5 8 Nf1 Qd7 9 Ng3 Be7 10 O0 O0 11 h3 Nh7 12 Be3 b5 13 Qc2 Qb7 14 Rac1 Bd7 15 Nf5 Bf6? (Oh, fudge. And it doesn't get any better than this.) 16 Nxd6 Qb8 17 Nf5 Bxf5 18 exf5 Be7 19 a3 Qc8 20 g4 h5 21 Qd2 hxg4 22 hxg4 Qe8 23 Kg2 Rad8 24 Qc2 Nf6 25 Nd2 Nd5 26 Rh1 Nf4+ 27 Bxf4 exf4 28 f3 Bg5 29 Ne4 Be7 30 Rh3 Rd5 31 Rch1 f6 32 b4 Ne5 33 bxc5 Kf7 34 Qa2 Qc6 35 d4 Nc4 36 Bxc4 bxc4 37 Qxc4 Ke8 38 Rb1 Kd7 39 Rb6 Qa8 40 c6+ Kc7 41 Rb7+ Kc8 42 Qxd5 (Nor can it get any worse.) 1-0

All of which simply means that Jim Mikus is the 1988 Michigan Reserve Champion, and qualifies for ... an awful lot of bragging rights. By the way, you'll note that he won after being elected to the MCA Board--shades of Gary Kitts!

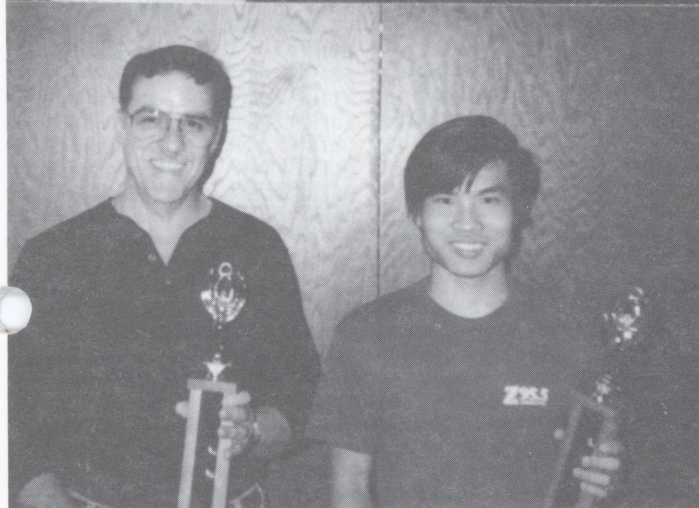
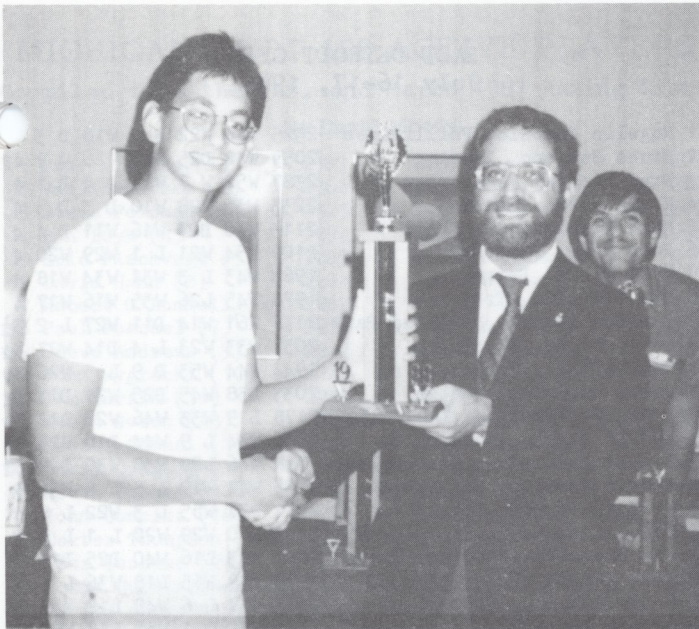
Congratulations to Mikus and Paul Kolsti, and to James Stockham, awarded the second place trophy. I must not forget to thank Vincent Brattin for helping on this report, and to TDs Groeller, Sawmiller and Boes for their aid.

In conclusion, I'd like to throw you a Larry Munger win. I mean, this guy plays both #1 and #2, beats two players in the top ten, and comes away with nothing but memories. Well, that's chess!

SHAWN MCINTOSH (1723)--LARRY MUNGER (1635): 1 e4 d6 2 d4 Nf6 3 Nc3 g6 4 Nf3 Bg7 5 Bc4 O0 6 Be3 Bg4 7 Qd2 Nxe4 8 Bxf7+ Rxf7 9 Nxe4 Rxf3! 10 gxf3 Bxf3 11 Ng3 Bxh1 12 Nxh1 (Oh what a knight...) Nc6 13 O0 e5 14 dxe5 Nxe5 15 Qd5+ Kh8 16 Qxb7 Rb8 17 Qd5 c6 18 Qe6 Nf3 19 Rxd6 Qa5 20 Bxa7 (Trying to gain a tempo.) Qxa7 21 Rd7 Qb6 22 b3 Rg8 23 Re7 Qd4 0-1

PRIZE WINNERS - RESERVE SECTION

| | |
|---------------------|--|
| 1st \$225 & Tr. | Jim Mikus |
| 225 | Paul Kolsti |
| 2nd Trophy | James Stockham |
| 1st "C" \$150 & Tr. | Don Winslow |
| 2nd "C" \$25 & Tr. | Juan Rodriguez |
| \$25 ea | Gary Fulton, Mark Malzahn, Gary Fletcher |
| Under 1400 | \$125 & Tr. Kevin Gregory |
| 125 | Tanapoom Sujarit |
| Unrated | \$125 & Tr Jack Lucchesi |
| 125 & Tr | Duong |



TOP: James Riseman (left), Lapeer, receives Top Class A trophy and \$150 check from Dan Burg, MCA treasurer, for winning Top Class A in Michigan Open. He tied at 4.5 pts with 8 experts.

BOTTOM: Proving that to win big prizes one doesn't have to have a high rating--or any rating at all, Jack Lucchesi, Wyoming, and Duong Luu, Westland, tied at 3.5 pts and took home \$125 each plus trophies for 1st & 2nd unrated spots. There were 11 unrated in the Reserve section. ---Jim Kulbacki photos

GRAND RAPIDS HEX IS HEXED

Only ten players entered the 2nd Annual GR Hex, an all-time low for a GRCC event. Because of the small turn-out, the top four players agreed to compete in a double round robin, the first three games at G/60 and the last three at G/30! Kevin Czuhai, the highest-rated competitor, won the "slow" (!) event 3-0, while Jason Wysocki took the faster games by the same score. When the smoke cleared, Czuhai snatched the trophy on tiebreaks from Wysocki!

In the lower section, a 6-player round robin, Jeff Boes blanked the field 5-0 for a trophy. Ron Grzegorzczuk directed the event. —by Jeffery Boes

MCA PRESIDENT WEDS MEMBER OF MCA BOARD

Two members of the MCA Board of Directors were married this month at a wedding in Lansing for Vicki Carol Dix and Gary Kitts.

The ceremony was in the Emanuel First Lutheran Church a few blocks north of the state Capitol, followed by a reception at the Hannah Ballroom near the Michigan State University campus.

The couple are on a two week honeymoon in an unspecified area in the southwest part of the country.

Gary is MCA president and 1986 Michigan chess champion. He has served on the Board of directors since 1975. Vickie was appointed to the Board last year. They will live in East Lansing.

MICHIGAN ON NAT'L COMMITTEES

Several MCA board members were appointed to national committees at the USCF meeting in Boston.

Dan Burg is on the Rules Committee and the College Chess Committee.

Peter Nixon has been named to the Scholastic Committee and the Women's Chess Committee.

William Groeller was put on the ethics committee.

CHRISTIAN SCIENCE MONITOR'S CHESS COLUMNIST 50 YEARS DIES

Frederick R. Chevalier, chess columnist for the Christian Science Monitor for 50 years, died May 19. He was 80 and had retired from the column years ago. He lived in Tryon, North Carolina, since 1971.

Your MC editor met him at a Region V Championship tournament about in Indiana 1975. We played our unbeatable Polish opening against him. We won his king rook in an opening trap. He won the game!

Some years later he shipped us a box of accumulated magazines from various states, saying he no longer needed them. We still peruse them.

His widow, Doris, sent us the sad news about his death and said he had enjoyed reading MICHIGAN CHESS.

He was a good player, a good columnist and a good man.

CHICAGO GETS 1989 U.S. OPEN

The site of the 1989 U.S. Open will be in Chicago. It will be a 9 round event--only two weekends plus the five days between, which virtually guarantees a huge turnout from Michigan!

LOWER PENINSULA WINS U.P. CHAMPIONSHIP TOURNAMENT

Three lower peninsula men topped the Upper Peninsula Chess Championship Aug. 20-21 in Negaunee.

James Kulbacki (2148) Lake Orion, won 1st with 4.5 pts; James Jackson (2033) Detroit and Gregg Bailey (2012) Cheboygan were 2nd and 3rd after tiebreaks with 4 pts each in a four way tie.

The other two 4-pointers were Wolfgang H. Andel (965) Marquette and Philip D. Taskila (1897) Ishpeming. They were declared U.P. co-champions. The 35 entries included 10 from the lower peninsula and 3 from out of state.

ROBISON & ANTONIO (Who?) TOP 62 in EAST DETROIT OPEN

EAST DETROIT OPEN
July 16-17, 1988

By David Moody

The East Detroit Open has been held annually for well over 20 years now, and has become a definite fixture on the July calendar. This year's version attracted 62 players under the distinguished shepherding of Bill Groeller, and I can guess your first question: Antonio who?

It's Rogelio Antonio; he comes from the Phillipines, and tied for first in the Under-2400 Section at the World Open. Visiting in the Detroit area, he figured to pick up a little loose change. That 2325 rating, by the way, is a FIDE mark, and equates to 2450 USCF. Surely, this was a good match for Michigan's highest rated player, Fred Lindsay as well as the other three Masters in the event in Kevin Noren, Nasser Abbasi and Dexter Thompson.

Not that the Masters kept up, anyways: Abbasi was beaten in rounds 2 and 3, while Dexter beat him out by losing in round one to B-player Victor Kreiman. And Kreiman wasn't finished: look what he did in round 2:

VICTOR KREIMAN (1725)--JIM KULBACKI (2029): 1 e4 e6 2 d4 d5 3 e5 c5 4 c3 Qb6 5 Nf3 Bd7 6 Bd3 Bb5 7 O-O Bxd3 8 Qxd3 Nc6 9 Bd2 Qxb2 10 c4 Qxa1 11 Qb3 Nxd4 12 Nxd4 Qxd4 13 Qb5+ Kd8 14 Qxb7 Qxe5 15 Ba5+ Ke8 16 Qxa8+ Kd7 17 Qb7+ 1-0 (Mate follows; Criminy, indeed!)

Well, four perfect scores survived the first day: Lindsay, Antonio, Noren, Tom Mazuchowski. Lindsay and Noren then played a long, tough draw in round 4 (advantage, Noren) while Mazuchowski got hit by a runaway can opener:

TOM MAZUCHOWSKI (2143)--ROGELIO ANTONIO (2325): 1 e4 c6 2 f4 d5 3 e5 Bf5 4 d3 h5 5 Be2 h4 6 c3 e6 7 Be3 c5 8 Nf3 Nc6 9 d4 Qb6 10 Qb3 c4 11 Qxb6 axb6 12 Nbd2 b5 13 Nf1 b4 14 Bd2 b3 15 a3 (And now, Black opens him up!) Rxa3! 16 Rxa3 Bxa3 17 Bc1 Be7 18 h3 Nh6 19 Ne3 b5 20 Nd1 Kd7 21 Be3 Bc2 22 O-O Nf5 23 Bf2 Ra8 24 Ne3 Ra2 0-1

That put Antonio on top at 4, followed on 3½ by Lindsay Noren, Carlton Thomas, Mark Finegold and Bruce Robison. Antonio drew quickly with Lindsay to reach 4½, Noren and Finegold drew after quite a struggle to fall short. So ...

CARLTON THOMAS (2178)--BRUCE ROBISON (2059): 1 e4 e6 2 d4 d5 3 Nc3 Bb4 4 e5 c5 5 a3 Bxc3+ 6 bxc3 Qc7 7 Nf3 Bd7 8 a4 Ne7 9 Bd3 Nbc6 10 O-O c4 11 Be2 h6 12 Re1 Qa5 13 Bd2 O-O 14 Bc1 g5 15 Ba3 Qxc3 16 Qd2 Qxd2 17 Nxd2 c3 18 Nb3 Nf5 19 Red1 Kb8 20 Rab1 Ka8 21 g4 Ng7 22 Nc5 Bc8 23 Bb5 h5 24 Na6 Bd7 25 Nc7+ Kb8 26 Bb6 Kc8 27 Bxc6 Bxc6 28 Nb5 Bxb5 29 Rxb5 Rd7 30 Rdb1 hxg4 31 Ra5 b6 32 Rab5 (32 Rxb6!?) Nf5 33 a5 Nxd6 34 exd6 Rxd6 35 axb6 axb6 36 Ra1 Kb7 37 Rb3 Ra8 38 Rxa8 Kxa8 39 Rxc3 Kb7 40 Rg3 f5 41 Kf1 Rc6 42 c3 Rc8 43 Re3 Re8 44 h3 gxh3 45 Rxb3 Kc6 46 Rh5 g4 47 Ke2 Ra8 48 Kd3 Ra2 49 f3 gxf3 50 Rh3 f2 51 Rf3 b5 52 Ke3 b4 0-1

You can call it coming in the back door, but it still counts: Robison and Antonio take the top two prizes at 4½. Karl Clark and Steve Mellen topped the A-players at 4, while Fred Lahr caught Victor Kreiman for B-money with 3. Class C winners were Anita Sujarit, Reinhard Rottner, Jacob Swartz and Gary Keeley, while Robert Emke topped the Unrated with a fine score of 3½.

| | | | | | | | | | | |
|----|--------------------------------|------|-----|-----|-----|-----|-----|-----|-----|----|
| 1 | Rogelio Antonio, Phillipines | 2325 | W24 | W22 | W | 6 | W18 | D | 3 | |
| 2 | Bruce Robison, Lansing | 2059 | W42 | D25 | W48 | W26 | W | 9 | 4½ | |
| 3 | Fred Lindsay, Ann Arbor | 2387 | W52 | W | 7 | W17 | D | 4 | D | 1 |
| 4 | Kevin Noren, Lansing | 2233 | W35 | W28 | W10 | D | 3 | D | 5 | 4 |
| 5 | Mark Finegold, Oak Park | 2113 | W40 | D27 | W16 | W11 | D | 4 | 4 | |
| 6 | John Lang, Plymouth | 2109 | W54 | W21 | L | 1 | W29 | W20 | 4 | |
| 7 | Karl Clark, Detroit | 1963 | W43 | L | 3 | W31 | W34 | W18 | 4 | |
| 8 | Steve Mellen, Troy | 1978 | W45 | L26 | W35 | W16 | W17 | 4 | | |
| 9 | Carlton Thomas, Highland Park | 2178 | W61 | W14 | D11 | W27 | L | 2 | 3½ | |
| 10 | David Moody, Dearborn | 2037 | W33 | W23 | L | 4 | D14 | W27 | 3½ | |
| 11 | Tom LaForge, Warren | 1944 | W44 | W53 | D | 9 | L | 5 | W26 | 3½ |
| 12 | James Vermilya, Canton | 2033 | D38 | W45 | D25 | W21 | D13 | 3½ | | |
| 13 | Leonard Dickerson, KnoxvilleTN | 2178 | L19 | W33 | W46 | W28 | D12 | 3½ | | |
| 14 | Rudolf Franke, Washington | 1896 | W34 | L | 9 | W44 | D10 | W25 | 3½ | |
| 15 | Robert Emke, Jr., Gr. Pte.Wds | UNR | W46 | L20 | W38 | W30 | D19 | 3½ | | |
| 16 | Victor Kreiman, Ann Arbor | 1725 | W41 | W19 | L | 5 | L | 8 | W36 | 3 |
| 17 | Morgan Everett, Detroit | 2081 | W32 | W55 | L | 3 | W22 | L | 8 | 3 |
| 18 | Tom Mazuchowski, Sterling Hts | 2143 | W60 | W29 | W20 | L | 1 | L | 7 | 3 |
| 19 | Jim Kulbacki, Lake Kreimany | 2029 | W13 | L16 | W40 | D25 | D15 | 3 | | |
| 20 | Jack Duncan, Evansville, IN | 1995 | W39 | W15 | L18 | W36 | L | 6 | 3 | |
| 21 | Henry Johnson, Detroit | 1875 | W37 | L | 6 | W49 | L12 | W35 | 3 | |
| 22 | Benson Selitsky, Southfield | 1960 | W51 | L | 1 | W52 | L17 | W33 | 3 | |
| 23 | Robert Moore, Battle Creek | 1836 | W47 | L10 | L41 | W45 | W34 | 3 | | |
| 24 | Fred Lahr, Ferndale | 1793 | L | 1 | L44 | W59 | W39 | W37 | 3 | |
| 25 | Ed Ball, West Bloomfield | 1845 | W58 | D | 2 | D12 | D19 | L14 | 2½ | |
| 26 | Tom Tobias, Southfield | 1313 | W36 | W | 8 | -½ | L | 2 | L11 | 2½ |
| 27 | V.J. Brattin, Belleville | 1863 | W59 | D | 5 | W53 | L | 9 | L10 | 2½ |
| 28 | Stan Golonka, Livonia | 1945 | W50 | L | 4 | W32 | L13 | D31 | 2½ | |
| 29 | Steve Conley, Newport | 1916 | W49 | L18 | W37 | L | 6 | D32 | 2½ | |
| 30 | John Haley, Warren | 1399 | D48 | L41 | W60 | L15 | W47 | 2½ | | |
| 31 | Gary Swathell, Westland | 1761 | L53 | W57 | L | 7 | W44 | D28 | 2½ | |
| 32 | Tom Boldrick, Grosse Ile | 1665 | L17 | W47 | L28 | W50 | D29 | 2½ | | |
| 33 | Murlin Varner, Southfield | 1628 | L10 | L13 | W43 | W46 | L21 | 2 | | |
| 34 | Anita Sujarit, Troy | 1472 | L14 | +61 | W55 | L | 7 | L23 | 2 | |
| 35 | Charles Collins, Harper Woods | 1769 | L | 4 | W50 | L | 8 | W49 | L22 | |
| 36 | Tom Triplett, East Lansing | 1844 | L26 | W51 | W42 | L20 | L16 | 2 | | |
| 37 | Reinhard Rottner, Roseville | 1470 | L21 | W60 | L29 | W42 | L24 | 2 | | |
| 38 | Mark Fraser, Grosse Pte Woods | 1645 | D12 | L48 | L15 | D51 | W49 | 2 | | |
| 39 | Jacob Swartz, Detroit | 1578 | L20 | L52 | W57 | L24 | W50 | 2 | | |
| 40 | Christopher Morrow, Detroit | 1715 | L | 5 | W59 | L19 | D47 | D46 | 2 | |
| 41 | Dexter Thompson, Detroit | 2228 | L16 | W30 | W23 | --- | --- | --- | 2 | |
| 42 | Joe Beane, Saginaw | 1642 | L | 2 | W58 | L36 | L37 | W51 | 2 | |
| 43 | Gary Keeley, Sterling Heights | 1552 | L | 7 | L46 | L33 | W57 | W54 | 2 | |
| 44 | Raymond Griffis, Mt Clemens | 1478 | L11 | W24 | L14 | L31 | D45 | 1½ | | |
| 45 | Brian June, Flint | 1558 | L | 8 | L12 | W58 | L23 | D44 | 1½ | |
| 46 | Dennis Ridella, Warren | 1826 | L15 | W43 | L13 | L33 | D40 | 1½ | | |
| 47 | Nate Senlamai, Troy | 1244 | L23 | L32 | BYE | D40 | L30 | 1½ | | |
| 48 | Frank Dmuchowski, Westland | 1851 | D30 | W38 | L | 2 | --- | --- | 1½ | |
| 49 | Pramote Sujarit, Troy | 1478 | L29 | W54 | L21 | L35 | L38 | 1 | | |
| 50 | Daniel Miller, Dearborn | 1499 | L28 | L35 | W54 | L32 | L39 | 1 | | |
| 51 | John Eadres, Ypsilanti | 1516 | L22 | L36 | -½ | D38 | L42 | 1 | | |
| 52 | Jewell Morris, Mt. Morris | 1819 | L | 3 | W39 | L22 | --- | --- | 1 | |
| 53 | Nasser Abbasi, Troy | 2232 | W31 | L11 | L27 | --- | --- | --- | 1 | |
| 54 | Robert McCarter, Ann Arbor | 1694 | L | 6 | L49 | L50 | W58 | L43 | 1 | |
| 55 | Marvin Kornhauser, Franklin | 1846 | W57 | L17 | L34 | --- | --- | --- | 1 | |
| 56 | Raymond Burwell, Detroit | 1841 | +62 | --- | --- | --- | --- | --- | 1 | |
| 57 | John Suess, Toledo, OH | 1396 | L55 | L31 | L39 | L43 | D58 | 1 | | |
| 58 | Tanampom Sujarit, Troy | 1367 | L25 | L42 | L45 | L54 | D57 | 1 | | |
| 59 | Gary Fletcher, Flint | 1414 | L27 | L40 | L24 | --- | --- | --- | 0 | |
| 60 | John Blake, Detroit | 1716 | L18 | L37 | L30 | --- | --- | --- | 0 | |
| 61 | Steve Rosenberg, Canton | 1722 | L | 9 | -34 | --- | --- | --- | 0 | |
| 62 | Timothy Thomas, Sterling Hts | 1270 | -56 | --- | --- | --- | --- | --- | 0 | |

CORRECTION

In article on the Michigan Chess Hall of Fame by Gary Kitts on page 4 in the August MICHIGAN CHESS we inadvertently typed the name of Herman Steiner as a guest at the Palmi home some 40 years ago. It was actually Herman Helms, world famous chess editor. Sorry, Gary.

- 1st-2nd: Rogelio Antonio, Bruce Robison (\$150)
- Expert: Mark Finegold, John Lang (\$32.50)
- A: Karl Clark, Steve Mellen (\$32.50)
- B: Victor Kreiman, Fred Lahr (\$32.50)
- C: Anita Sujarit, Reinhard Rottner, Jacob Swartz, Gary Keeley (\$16.25)
- DEU: Robert Emke (\$65)
- Director: Bill Groeller
- Organizer: East Detroit Chess Club

MICHIGAN'S TOP 100 ACTIVE PLAYERS

Compiled from the Jan. and March 1987 Rating Lists

By David Moody

| | | | |
|--------------------------|------|----------------------------|------|
| 1 Fred Lindsay (1) | 2387 | 51 Mark Pence (51) | 2090 |
| 2 Val Kavnatsky (2) | 2362 | 52 Mark Knecht (52) | 2089 |
| 3 Steve Feldman (3) | 2323 | 53 Gary Kitts (45) | 2088 |
| 4 Dan Boyk (4) | 2294 | 54 Frank Helle (47) | 2085 |
| 5 Eric Fischvogt (5) | 2289 | 55 William Accad (53) | 2081 |
| 6 David Hahn (8) | 2281 | 56 Ken VanCleve (55) | 2078 |
| 7 Robert O'Donnell (6) | 2262 | 57 Jim Kulbacki (74) | 2077 |
| 8 Paul Poschel (7) | 2258 | 58 John Shavaliar (57) | 2077 |
| 9 Steve Andrews (9) | 2247 | 59 Simeon Ivanov (—) | 2076 |
| 10 John Wygrecki (10) | 2244 | 60 Greg Bailey (70) | 2071 |
| 11 Jim Marfia (11) | 2239 | 61 Gary Sacco (58) | 2071 |
| 12 Kevin Noren (13) | 2234 | 62 Howard Levine (59) | 2070 |
| 13 Nasser Abbasi (15) | 2232 | 63 Ed Bennett (56) | 2069 |
| 14 Larry Quigley (16) | 2228 | 64 Frank Fricko (64) | 2065 |
| 15 Kevin Cuhai (12) | 2219 | 65 Lineas Baze (60) | 2063 |
| 16 John Concini (18) | 2215 | 66 William Fuller (62) | 2061 |
| 17 Dexter Thompson (17) | 2211 | 67 Don Mason (63) | 2059 |
| 18 Issa Youssef (20) | 2207 | 68 Chris Eagle (66) | 2049 |
| 19 Robin Cunningham (14) | 2206 | 69 Richard Johnson (67) | 2048 |
| 20 Robert Avery (19) | 2202 | 70 Richard Lees (69) | 2039 |
| 21 Carlton Thomas (23) | 2197 | 71 Gene Hickey (68) | 2037 |
| 22 David Wolfrom (26) | 2189 | 72 Randy Giminez (72) | 2034 |
| 23 John Brooks (21) | 2188 | 73 Chris Hankinson (73) | 2031 |
| 24 Devuyv Carroll (22) | 2183 | 74 Don Bohley (75) | 2024 |
| 25 Ron Finegold (24) | 2176 | 75 Kenneth Martin (76) | 2024 |
| 26 DuWayne Riggins (25) | 2163 | 76 Bernard Cook (77) | 2021 |
| 27 Robert Polk (27) | 2160 | 77 Attila Lehotzky (78) | 2021 |
| 28 Charles Bassin (29) | 2149 | 78 David Moody (71) | 2021 |
| 29 Andrew Beaver (31) | 2142 | 79 Jeff Richburg (79) | 2019 |
| 30 Ed Koster (32) | 2141 | 80 Dale Postma (80) | 2017 |
| 31 Thomas Sloan (34) | 2140 | 81 Nir Cohen (81) | 2016 |
| 32 Mike Kebrdle (39) | 2130 | 82 Marcus Hendricks (82) | 2016 |
| 33 Bill Groeller (33) | 2129 | 83 Chip Kraft (83) | 2012 |
| Tom Mazuchowski (30) | 2126 | 84 Kevin Pierce (84) | 2012 |
| 35 Steve Mitchell (35) | 2124 | 85 Bruce Robison (64) | 2010 |
| 36 John Norcross (36) | 2123 | 86 Jason Morris (86) | 2006 |
| 37 John Dupree (37) | 2119 | 87 Tom Szczycka (87) | 2005 |
| 38 Phil Laren (38) | 2119 | 88 Stan Jarosz (—) | 2003 |
| 39 Mark Finegold (—) | 2113 | 89 Les LeRoy Smith (88) | 2003 |
| 40 James Haluska (40) | 2110 | 90 Ed Williams (92) | 2003 |
| 41 John Lang (41) | 2109 | 91 Paul Bauerle (65) | 2002 |
| 42 Aaron Daniel (42) | 2108 | 92 Jason Wysocki (85) | 2001 |
| 43 Morgan Everett (54) | 2108 | 93 Leonard Dangremond (89) | 1998 |
| 44 Vester Wilson (43) | 2107 | 94 Lawrence Brenton (90) | 1997 |
| 45 George Turner (28) | 2153 | 95 Karl Clark (—) | 1996 |
| 46 Glenn Good (44) | 2103 | 96 Naum Zacks (91) | 1996 |
| 47 Alex Yakhkind (46) | 2100 | 97 Jack Duncan (—) | 1993 |
| 48 Jerry Haapapuro (48) | 2095 | 98 Brian Garwood (93) | 1985 |
| 49 Tom Ward (61) | 2094 | 99 Rudolf Thun (95) | 1982 |
| 50 Tony Palmer (50) | 2092 | 100 Ed Mooney (100) | 1978 |

K.NOREN, N.ABBASI ARE CO-CHAMPS OF ANN ARBOR SUPER TORNADO

Joe Feldman is quickly becoming the king of 30-30 chess in Michigan. Not satisfied with the one-day hex, he has now continued his series of 8-round events to prolong the agony over two days.

This was actually the second such event: Dexter Thompson clobbered the field in going 7-1 last year. He started off in similar vein this time, winning five in a row at the start including a win over fellow Master Kevin Noren. But, the law of averages finally caught up with him, and he ended with three straight losses, to Nasser Abbasi (who was recovering from a first round loss to B-player Brian Nienhaus), Mark Finegold and David Wolfrom.

Noren and Abbasi played a good draw in round 7, then clinched first with 6½ points each by winning their last game over David Moody and Finegold respectively. Mark actually led the event at 6-1 going into the last round, but Abbasi proved one Master too many after he had already beaten Thompson and John Wygrecki.

Also ending on 6 points was top A-player James Owens. Brian Nienhaus had a great tournament, gaining over 100 rating points, but could only tie for top B with Charles Collins on 4½. Jeff Aldrich and Brian June scored 4 points to lead Class C, while Vadim Ponomarenko took DEU with 4 as well.

With 33 players and eight rounds, tough pairings were to be anticipated. Note that Noren played 7 of the next 9 finishers, and Abbasi six; Mark Finegold played all four Masters, while I missed out only on Dexter. All in all, an interesting concept.

By David Moody

ANN ARBOR SUPER TORNADO July 30-31, 1988

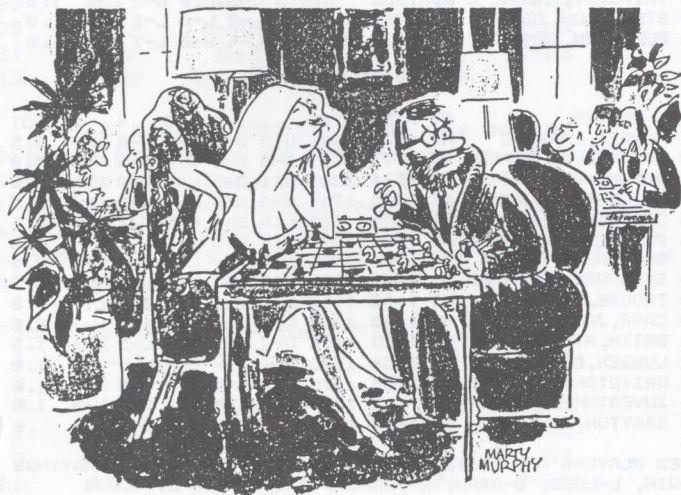
| | | | | | | | | | | |
|----------------------------------|------|-----|-----|-----|-----|-----|-----|-----|-----|----|
| 1 Kevin Noren, Lansing | 2233 | W21 | W 4 | W 3 | L 6 | W 7 | W 5 | D 2 | W 9 | 6½ |
| 2 Nasser Abbasi, Troy | 2232 | L10 | W23 | W19 | W 9 | W 4 | W 6 | D 1 | W 3 | 6½ |
| 3 Mark Finegold, Oak Park | 2113 | W26 | W20 | L 1 | W12 | W29 | W 9 | W 6 | L 2 | 6 |
| 4 James Owens, Orchard Lake | 1979 | W16 | L 1 | W22 | W18 | L 2 | W12 | W11 | W10 | 6 |
| 5 David Wolfrom, East Lansing | 2163 | W19 | W14 | W 8 | L11 | W10 | L 1 | W15 | W 6 | 6 |
| 6 Dexter Thompson, Detroit | 2228 | W22 | W15 | W 7 | W 1 | W11 | L 2 | L 3 | L 5 | 5 |
| 7 Bruce Robison, Lansing | 2059 | W28 | W10 | L 6 | W20 | L 1 | L11 | W17 | W18 | 5 |
| 8 Frank Helle, Mt. Pleasant | 2096 | W17 | W12 | L 5 | W13 | L 9 | D10 | W25 | W15 | 5 |
| 9 David Moody, Dearborn | 2037 | W32 | W29 | D11 | L 2 | W 8 | L 3 | W14 | L 1 | 4½ |
| 10 Brian Nienhaus, Ann Arbor | 1665 | W 2 | L 7 | W14 | W21 | L 5 | D 8 | W13 | L 4 | 4½ |
| 11 Phil Laren, Whitmore Lake | 2119 | W24 | W13 | D 9 | W 5 | L 6 | W 7 | L 4 | — | 4½ |
| 12 Charles Collins, Harper Wds | 1769 | W25 | L 8 | W30 | L 3 | W17 | L 4 | W16 | D14 | 4½ |
| 13 Thomas Triplett, East Lansing | 1844 | W27 | L11 | W23 | D 8 | L14 | W20 | L10 | W22 | 4½ |
| 14 Steve Mellen, Troy | 1978 | W31 | L 5 | L10 | W32 | W13 | W25 | L 9 | D12 | 4½ |
| 15 Mike Skidmore, Flint | 1926 | W33 | L 6 | W17 | L29 | W19 | W18 | L 5 | L 8 | 4 |
| 16 Vadim Ponomarenko, Ann Arbor | 1276 | L 4 | L22 | W26 | L17 | W21 | W19 | L12 | W31 | 4 |
| 17 Jeff Aldrich, Burton | 1440 | L 8 | W27 | L15 | W16 | L12 | W30 | L 7 | W26 | 4 |
| 18 Gary Swathell, Westland | 1761 | L29 | W32 | W25 | L 4 | W28 | L15 | W26 | L 7 | 4 |
| 19 Brian June, Flint | 1558 | L 5 | W31 | L 2 | W23 | L15 | L16 | W33 | W25 | 4 |
| 20 Don Ifill, Ypsilanti | 1913 | W30 | L 3 | W24 | L 7 | — | L13 | D27 | W28 | 4 |
| 21 Allan Poord, Garden City | 1698 | L 1 | W28 | L29 | L10 | L16 | W33 | W30 | W27 | 4 |
| 22 Scott Webb, Ann Arbor | UNR | L 6 | W16 | L 4 | L25 | D23 | W31 | W24 | L13 | 3½ |
| 23 Tom Hayes, Clio | 1168 | BYE | L 2 | L13 | L19 | D22 | L24 | W31 | W32 | 3½ |
| 24 Jennifer Skidmore, Flint | 1531 | L11 | W33 | L20 | D27 | L25 | W23 | L22 | W30 | 3½ |
| 25 Vaski Rajlich, Ann Arbor | UNR | L12 | W26 | L18 | W22 | W24 | L14 | L 8 | L19 | 3 |
| 26 Richard-Pietila, Ann Arbor | 1448 | L 3 | L25 | L16 | W33 | W27 | W28 | L18 | L17 | 3 |
| 27 Anthony Witkowski, Westland | UNR | L13 | L17 | BYE | D24 | L26 | W32 | D20 | L21 | 3 |
| 28 Bruce Lovett, Union Lake | 1436 | L 7 | L21 | W31 | W30 | L18 | L26 | W32 | L20 | 3 |
| 29 John Wygrecki, Detroit | 2244 | W18 | L 9 | W21 | W15 | L 3 | — | — | — | 3 |
| 30 Paul Lin, Ann Arbor | UNR | L20 | BYE | L12 | L28 | W32 | L17 | L21 | L24 | 2 |
| 31 Rafal Parjo, Ann Arbor | 1224 | L14 | L19 | L28 | — | W33 | L22 | L23 | L16 | 1½ |
| 32 Richard McCrumb, Ann Arbor | UNR | L 9 | L18 | W33 | L14 | L30 | L27 | L28 | L23 | 1 |
| 33 Dennis Richman, Ypsilanti | UNR | L15 | L24 | L32 | L26 | L31 | L21 | L19 | BYE | 1 |

1st-2nd: Kevin Noren, Nasser Abbasi (\$98)
 Class A: James Owens (\$33)
 Class B: Brian Nienhaus, Charles Collins (\$16.50)
 Class C: Jeff Aldrich, Brian June (\$16.50)
 Class DEU: Vadim Ponomarenko (\$33)

Director and Organizer: Joe Feldman

Solution to problem on page 5

1 N-N1 P-R8, Q 2. B-N7 any 3, R-B8, mate



"Rules Committee!"

Grand Rapids Summer Swiss: Hot Weather, Hotter Chess!

—by Jeffery Boes

The Grand Rapids Chess Club hosted a two-section, four-round Swiss on July 23-24. Attendance was down to 25 this year as we competed for attention with several other two-day events during the mid-summer.

There was no decrease in enthusiasm, though, as top honors went to *Kevin Czuhai* in the 10-player Open section, and *Larry Munger* in the 15-player Reserve section. Both scored 3½ points. Here are a few games from the winners:

Sicilian Defense (Fischvogt-Czuhai) 1. e4 c5 2. Nf3 e6 3. d4 cd4 4. Nd4 Nf6 5. Nc3 Nc6 6. Ndb5 d6 7. Bf4 e5 8. Bg5 a6 9. Na3 b5 10. Nd5 Be7 11. Bf6 Bf6 12. c3 0-0 13. Be2 Rb8 14. 0-0 Bg5 15. Nc2 Bb7 16. a4 Na5 17. ab5 ab5 18. Ncb4 Nc4 19. Qc2 f5 20. e5 Ra8 21. Bd3 Nd2 22. Rfd1 Ra1 23. Ra1 Qe8 24. f6 e4 25. fg7 Rf5 26. Ne3 Rf2 27. Kf2 Be3+ 28. Ke3 ed3+ 29. Kd3 Nc4 30. Qe2 Qg6+ 31. Kd4 Qf6+ 32. Kd3 Qf5+ 33. Kd4 Qf4+ 34. Kd3 Be4+ 35. Kd4 Qe5#

Caro-Kann Defense (Munger-Spooner) 1. e4 c6 2. d3 d5 3. Nd2 e5 4. Ngf3 Bd6 5. g3 Bg4 6. Bg2 Nf6 7. 0-0 Qd7 8. Qe1 Qc7 9. ed5 0-0 10. Ne4 Nd5 11. c4 Bf3 12. Bf3 Bb4 13. Qe2 Nf6 14. Nf6+ g1f6 15. Be4 f5 16. Bf5 f6 17. Bh6 Re8 18. Qg4+ Kh8 19. Qh4 Qf7 20. Be3 Bf8 21. b3 Be7 22. Qh3 Bf8 23. d4 e4 24. d5 b6 25. Bd4 c5 26. Bf6+ Kg8 27. Be6 Re6 28. Qe6 Nd7 29. Qg4+ Bg7 30. Bg7 Qg7 31. Qe4 (1 - 0; 57)

One new player of note in his first tournament was 11-year-old *Joshua Zuverink* of Zeeland. He won his first rated game vs. a class B player! His performance rating for the event was a very respectable 1473. Welcome, Josh! (Josh recently scored 3 points in the Michigan Open, finishing only ½-point behind the Unrated prizewinners.)

| Open | | | |
|-----------------|-----------|-----------|--|
| Kevin Czuhai | 1st, 3½ | \$80 | |
| Ed Bennett | 2nd, 3 | \$40 | |
| Glenn Good | 3rd, 3 | \$20 | |
| Stanley Jarosz | U2000, 2½ | \$40 | |
| Reserve | | | |
| Larry Munger | 1st, 3½ | \$80 | |
| Frank Spooner | 2nd, 3 | \$40 | |
| Ron Grzegorzczk | =3rd, 2½ | \$10 | |
| John Griffin | =3rd, 2½ | \$10 | |
| Brion Brooks | U1600, 3 | \$40 | |
| James Carr | Unr., 2 | Free USCF | |

Ed Bennett won the \$10 upset prize for defeating *Eric Fischvogt* (291 pts.). *Larry Munger* downed *Frank Spooner* (162 pts.) for the Reserve section upset prize, also \$10. Remarkably, both upsets were of the #1 player in the section! Not a good weekend for the favorites, although *Spooner* did recover to post wins in rounds 3 and 4.

In all, \$385 in prizes was awarded (80% return of entries). If you missed your chance to play in this annual event, then set your mark on it for next summer!

The Oddspeed Tourney, held after Round 2, drew 13 players. This event featured 5-minute chess with a twist: the lower-rated player received an extra minute for every full 100 points rating difference. Co-winners were *Kevin Czuhai* and *Eric Fischvogt* (+10 - 1 = 1); *Glenn Good* and *Gil Pointer* tied for 3rd with +9 - 2 = 1.

Open Section

| PLAYER | PRE ST RTNG | POST RTNG | POST | | | | TOT |
|----------------------|-------------|-----------|------|-----|-----|-----|-----|
| | | | 1 | 2 | 3 | 4 | |
| 1 CZUHAI, KEVIN | MI 2211 | 2234 | W-6 | W-3 | D-2 | W-5 | 3.5 |
| 2 BENNETT, EDWARD A | MI 2069 | 2102 | W-9 | W-5 | D-1 | D-4 | 3.0 |
| 3 GOOD, GLENN | MI 2103 | 2099 | W-8 | L-1 | W-6 | D-7 | 2.5 |
| 4 JAROSZ, JR STANLEY | MI 2009 | 2021 | W10 | W-7 | L-5 | D-2 | 2.5 |
| 5 FISCHVOGT, ERIC V | MI 2289 | 2262 | W-7 | L-2 | W-4 | L-1 | 2.0 |
| 6 BOES, JEFFERY L | MI 1959 | 1961 | L-1 | W-9 | L-3 | W-8 | 2.0 |
| 7 SKIDMORE, MICHAEL | MI 1878 | 1881 | L-5 | L-4 | W10 | D-3 | 1.5 |
| 8 TRIPLETT, THOMAS L | MI 1833 | 1815 | L-3 | L10 | W-9 | L-6 | 1.0 |
| 9 STOUGHTON, JOHN R | MI 1756 | 1744 | L-2 | L-6 | L-8 | W10 | 1.0 |
| 10 RUHLMANN, JAMES | MI 1679 | 1678 | L-4 | W-8 | L-7 | L-9 | 1.0 |

Reserve Section

| PLAYER | PRE ST RTNG | POST RTNG | POST | | | | | TOT |
|-----------------------|-------------|-----------|------|-----|-----|-----|-----|-----|
| | | | 1 | 2 | 3 | 4 | 5 | |
| 1 MUNGER, LARRY E | MI 1639 | 1684 | W15 | W-2 | D-4 | W-6 | U-- | 3.5 |
| 2 SPOONER, JR FRANK | MI 1777 | 1784 | W-8 | L-1 | W10 | W-4 | U-- | 3.0 |
| 3 BROOKS, BRION J | MI 1574 | 1599 | D11 | D-5 | W-8 | W10 | U-- | 3.0 |
| 4 GRZEGORCZYK, RONAL | MI 1758 | 1744 | W-9 | W14 | D-1 | L-2 | U-- | 2.5 |
| 5 GRIFFIN, JOHN L | MI 1646 | 1628 | L14 | D-3 | W-9 | W11 | U-- | 2.5 |
| 6 POINTER, GILBERT C | MI 1603 | 1591 | W13 | L10 | W-7 | L-1 | U-- | 2.0 |
| 7 SLOVINSKI, ROBERT | MI 1587 | 1566 | L10 | W11 | L-6 | W13 | U-- | 2.0 |
| 8 SKIDMORE, JENNIFER | MI 1506 | 1499 | L-2 | W13 | L-3 | W14 | U-- | 2.0 |
| 9 TROUPE, DAVID | MI 1462 | 1452 | L-4 | W15 | L-5 | B-- | L12 | 2.0 |
| 10 CARR, JAMES R | MI 1245 | 1357 | W-7 | W-6 | L-2 | L-3 | U-- | 2.0 |
| 11 SMITH, MICHAEL D | MI 1085 | 1256 | D-3 | L-7 | W14 | L-5 | U-- | 1.5 |
| 12 LUBBEN, DONALD L | MI 1754 | 1758 | U-- | U-- | U-- | U-- | W-9 | 1.0 |
| 13 KRZYSTON, JOSEPH S | MI 1185 | 1175 | L-6 | L-8 | X-- | L-7 | U-- | 1.0 |
| 14 ZUVERINK, JOSHUA T | MI 0 | 1368 | W-5 | L-4 | L11 | L-8 | U-- | 1.0 |
| 15 BRAYTON, DAVID L | MI 1270 | 1250 | L-1 | L-9 | U-- | U-- | U-- | .0 |

TIED PLAYERS ARE LISTED IN ORDER OF PRE-TOURNAMENT RATINGS
 J-WIN, L-LOSS, D-DRAW, X-FORFEIT WIN, F-FORFEIT LOSS
 Z-FORFEIT DRAW, H-1/2 PT BYE, B-BYE, U-UNPLAYED

100 AT THE BREAKFAST FOR NEW CHESS HALL OF FAME

By V.E.Vandenburg, MC Editor

The new Michigan Chess Hall of Fame Inaugural Breakfast at the Michigan Open Sunday morning Sept 4 was an especially impressive event to two MCA life members: your editor, V.E.Vandenburg, and his wife, Fjola. We will never forget this outstanding honor.

We were in the group of six inductees selected for the first year of the new Hall of Fame. Fjola helped Palmi organize the state association in 1930, and over the first 15 years she served in every office. She is the only remaining charter member. After we were married in 1963 she put in another 20 years or so serving chess.

Other inductees were:

** Andrew H. Palmi 1888-1962, MCA founder in 1930 and promoter of the annual championships for some 15 years until illness forced him out.

** Leon Stolzenberg 1895-1974, who won more Michigan championships than any other player, plus a national postal championship.

** George Eastman 1903-? (died some 20 years ago), second best championship winner of the early years.

** J.D. Brattin 1939-1981, the state's most popular player, organizer and director of recent years.

After the delicious breakfast was served at the Midway Motor Lodge, MCA President Gary Kitts called on board members to nominate the six inductees with outlines of their achievements and award beautiful plaques. Over 100 attended. The ceremony was followed followed by the MCA's annual meeting.

The program, a first for MCA, was acclaimed by the members and may be continued each year at the Michigan Open with a new inductee each time.

We have asked the speakers to provide articles for the December MICHIGAN CHESS covering the material they presented, plus anything additional they might obtain about the inductees.

The breakfast and inaugural of the Hall of Fame was part of the MCA Founders Centennial Year observing the 100th anniversary year of the birth of Palmi.

KITTS RECALLS GOOD OLD DAYS WHEN HE STARTED IN TOURNIES

(Gary Kitts wrote the following article for the August MICHIGAN CHESS, but we ran out of space. He recalls his own beginning in our state tournaments nearly a quarter century ago and submits two of his first games. Then he didn't know that in later years he would be elected to every MCA office --- and win the state championship in 1986! --Editor)

By GARY KITTS, MCA President

As part of its Founders Centennial Celebration, the Michigan Chess Association is instituting an MCA Hall of Fame to honor those who have contributed to the development of chess in Michigan. There will be six initial inductees at this year's Michigan Open. Two of them are V.E. and Fjola Vandenburg. Van and Fjola have been very special people in my chess career, not only because of the great contributions they have made to Michigan Chess, but also because they played a major role in my very first tournament. As luck would have it, my first serious game was against Van, who was then MCA President. At the time, I didn't know much about chess (some suggest that's still true), and Van kindly explained what the clock was and how it worked. His kindness gave me a positive feeling about tournament players even though the final result was not to my liking. With that introduction, I would like to take you back to Round One of the 1965 Michigan Open.

(Gary typed scores to read across 2 columns)

Gary Kitts - V.E. Vandenburg

| | | | | | |
|----|-------|-------|----|---------|-------|
| 1 | P-Q4 | P-Q4 | 2 | P-QB4 | P-K3 |
| 3 | N-KB3 | N-KB3 | 4 | B-N5 | B-K2 |
| 5 | P-K3 | O-O | 6 | N-B3 | N-Q2 |
| 7 | B-Q3 | P-QN3 | 8 | O-O | B-N2 |
| 9 | R-QB1 | P-QB4 | 10 | P-QN3 | R-QB1 |
| 11 | R-K1 | N-K5 | 12 | BxB | QxB |
| 13 | N-Q2 | P-KB4 | 14 | P-KB3 | NxN/3 |
| 15 | RxN | Q-B3 | 16 | N-N1 | PxP |
| 17 | PxP | QxPch | 18 | K-R1 | Q-B3 |
| 19 | B-B1 | P-Q5 | 20 | R-Q3 | P-K4 |
| 21 | K-N1 | P-KN4 | 22 | B-K2 | Q-N3 |
| 23 | N-R3 | P-KR4 | 24 | R-B1 | N-B4 |
| 25 | R-Q2 | N-K3 | 26 | P-KN3 | P-K5 |
| 27 | PxP | PxP | 28 | RxRch | RxR |
| 29 | BxB | Q-R2 | 30 | B-N4 | Q-N3 |
| 31 | BxNch | QxB | 32 | RxP | Q-B3 |
| 33 | Q-K2 | QxRch | 34 | Resigns | |

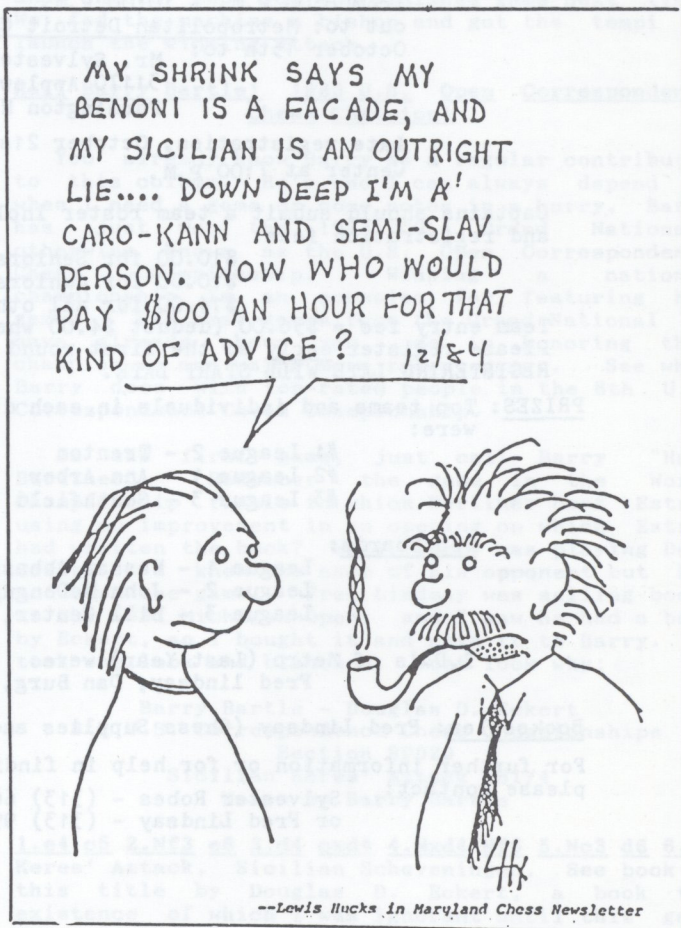
I've always thought that one of the biggest handicaps in retaining new players is the fact that many players lose every game in their first tournament, and never come back again. In my case, I was rather fortunate to win one. Let's go back to Round Three of that 1965 Open (see if you recognize the opening).

Fjola Vandenburg - Gary Kitts

| | | | | | |
|----|-------|-------|----|-------|-------|
| 1 | P-QN4 | N-KB3 | 2 | P-N5 | P-Q4 |
| 3 | P-K3 | B-B4 | 4 | P-QR4 | P-K4 |
| 5 | P-QB4 | PxP | 6 | BxB | B-QN5 |
| 7 | Q-N3 | Q-K2 | 8 | N-KB3 | B-Q3 |
| 9 | O-O | O-O | 10 | N-B3 | N-Q2 |
| 11 | N-Q5 | NxN | 12 | BxN | N-B4 |
| 13 | Q-B4 | B-Q6 | 14 | Q-B3 | BxR |
| 15 | KxB | P-K5 | 16 | B-N2 | Q-B3 |

| | | | | | |
|----|---------|--------|----|------|--------|
| 17 | Q-B2 | Q-K2 | 18 | Q-B3 | Q-B3 |
| 19 | Q-B2 | Q-N3 | 20 | N-K5 | BxN |
| 21 | BxB | Q-B4 | 22 | B-Q4 | N-Q6 |
| 23 | P-KB3 | QxB | 24 | PxP | QxP |
| 25 | R-R3 | Q-B4ch | 26 | K-K2 | N-B5ch |
| 27 | K-Q1 | QxQch | 28 | KxQ | NxP |
| 29 | R-B3 | QR-B1 | 30 | P-R5 | P-QB3 |
| 31 | PxP | RxP | 32 | RxR | PxR |
| 33 | BxP | R-R1 | 34 | B-N6 | K-B1 |
| 35 | K-B3 | K-K1 | 36 | P-K4 | N-R5 |
| 37 | P-Q4 | P-KN3 | 38 | K-B4 | P-KB4 |
| 39 | P-K5 | P-B5 | 40 | P-Q5 | PxP |
| 41 | KxP | P-B6 | 42 | K-Q6 | N-B4ch |
| 43 | K-K6 | P-B7 | 44 | BxP | RxP |
| 45 | B-K1 | R-R3ch | 46 | K-Q5 | N-K2ch |
| 47 | K-K4 | K-B2 | 48 | B-N3 | B-R5ch |
| 49 | K-B3 | K-K3 | 50 | K-K3 | N-B3 |
| 51 | K-B2 | NxP | 52 | BxN | KxB |
| 53 | K-N3 | K-B4 | 54 | P-R3 | P-N4 |
| 55 | K-B3 | R-R6ch | 56 | K-N2 | K-B5 |
| 57 | K-R2 | R-R7ch | 58 | K-N1 | K-B6 |
| 59 | Resigns | | | | |

Even with the passage of 23 years and several thousand games, I still remember these two as though they occurred yesterday. I suspect that most players fondly remember their first game and first victory. Even if you did not have had the good fortune to start your chess career playing the Vandenburgs, you still have benefited from all they have done for chess in Michigan. Without the many decades of hard work they have contributed, the Michigan Chess Association would be but a pale shadow of what it has become.



--Lewis Hucks in Maryland Chess Newsletter

1988-89 DETROIT METRO LEAGUE

By Sylvester Robes

The Detroit Metropolitan Chess League has started its upswing. Last year the Metro League had twenty-four teams participating, this represented over a 50% increase in the past three years. Hopefully, the Metro League can continue to grow in order to reach its zenith of over three hundred-fifty players and seventy teams. Many of the states leading players participate in the Metro League. I extend an invitation to chess players in Michigan to participate in the oldest, on-going chess league in the United States. With the cooperation of the staff of the Southfield Civic Center which gives us a larger, more convenient site and some changes in our league format, we expect the 1988-1989 Metro League season to be oigger and better!

FORMAT: (All details subject to confirmation at the organizational meeting on September 16th.)

- a.) 4 player teams (substitutes allowed)
- b.) open to everyone
- c.) league divisions according to strength
- d.) optional USCF rated play (players notify T.D. for rated games)
- e.) 40 moves in 90 minutes, then 30 minutes sudden death
- f.) 7 matches - 1 Friday night a month
- g.) NO SMOKING is allowed in playing area

NEW PLAYING SITE: Southfield Civic Center - Evergreen between 10 and 11 Mile roads

Playing Site:

- ROUND 1 - Friday 7:00 P.M. October 21st
- ROUND 2 - November 18th 8:00 P.M.
- ROUND 3 - December 2nd 8:00 P.M.
- ROUND 4 - January 27th, 1989 8:00 P.M.
- ROUND 5 - February 24th 8:00 P.M.
- ROUND 6 - March 24th 8:00 P.M.
- ROUND 7 - April 28th 8:00 P.M.

REGISTRATION: October 13th, North Farmington High School, Room E-2 from 8:00 P.M. - 10:00 P.M. OR Mail checks made out to: Metropolitan Detroit Chess Association, by October 15th to:

Mr. Sylvester Robes
31170 Applewood Ln.
Farmington Hills, MI 48331

Late registration, October 21st at the Southfield Civic Center at 7:00 P.M.

Captains should submit a team roster including addresses, ratings and registration fees:

- \$10.00 for Seniors (over 60 yrs. of age)
- \$10.00 for Juniors (under 18 yrs. of age)
- \$14.00 for all others

Team entry fee = \$56.00 (deduct \$4.00 where applicable)
Please register early so the first round can begin on time. **TEAMS REGISTERING LATE WILL START LATE.**

PRIZES: Top teams and individuals in each division. Last seasons winners were:

- #1 League 2 - Trenton
- #2 League 1 - Ann Arbor
- #3 League 3 - Southfield

Top Boards:

- League 1 - Nassar Abbasi, Phil Laren
- League 2 - John McDougough, Alex McNiry
- League 3 - Bill Center, Stewart Kelman

T.D.'s of Metro (Last Year) were:

Fred lindsay, Dan Burg, Bill Groeller and Ken Roberts

Bookseller: Fred Lindsay (Chess Supplies and Books)

For further information or for help in finding or forming a team please contact:

Sylvester Robes - (313) 661-4913 after 4:00 P.M.
or Fred Lindsay - (313) 995-8738

YOUR MAILING LABEL O.K.?

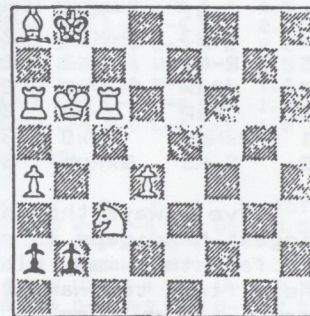
On your mailing label on this magazine if your name isn't spelled correctly or your address isn't just right please let us know.

A Grand Rapids MCA board memberr, Ron Grzegorzczk (hope we got that right), did a tremendous job in entering all our MCA membership names and addresses into our computer data base, going back to Jan.1,1986, for dates of payments, the amounts, the expiration dates, the birth dates, classifications by regular members, juniors, participating juniors, women, etc. It was a big job. MCA owes Ron big thanks.

The computer makes our mailing labels with expiration dates, gives us membership counts by categories, prints tournament calendar listings, expiration notices, articles and stuff. You name it and it does it.

Errors are inevitable. Proofreading misses some. We are correcting any we find. If there is a -boo-boo on your label let us know.

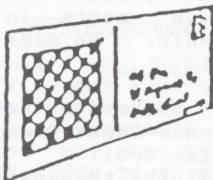
THIS ONE IS TRICKY!



WHITE

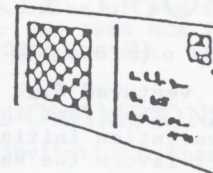
Can White mate in three moves? It is impossible-- or is it?

Try it. You'll give up and turn to page 15.



POSTAL CHESS

USCF Postal Master Chris Rosenfield
P.O. Box 99, Clarkston, Mich. 48016



1986 MCA Finals

This section is now under way, with this flock of hopefuls challenging defending champion Phil Soper: Buck Allen, Kirk Brinks, Dale Decker, John DeJongh, Stan Jarosz, Steve Mellen, Chris Rosenfield, Gary Schweikert, Mark Stefanski, Tom Szczyпка, and Dave Wolfrom. A few (Jarosz, Rosenfield, Wolfrom) are repeaters from the 1984 MCA tournament, but several (Stefanski, DeJongh, Mellen, and maybe some more) are new to postal chess. It promises to be a good clean fight.

1988 MCA Preliminary Round

This tournament will be starting just as this issue of Michigan Chess gets published. Again we have a good supply of newcomers to postal chess, and some who have never played a rated game, either otb or postal. Welcome! We play for blood but it is a friendly competition. Thanks to those who indicated they did not care whether computers were allowed in their section or not. These folks helped me balance the strength of the sections as well as to help make even numbers of players. This column is written before the entry deadline, so the roster of who is playing will wait until the next issue.

Rules

Rules for the 1988 MCA tournament were distributed with the section assignments. They are almost the same as the USCF rules. Here are the principal exceptions:

1. In the MCA tournament, your thinking time ends when you lose control of the move. This is analogous to taking your hand off the piece over the board. As the postal service cuts back on mail pickups from mail boxes and sometimes doesn't even collect what is taken to the postoffice on Saturday, the postmark becomes less and less a useful measure of thinking time. No instances of a longer discrepancy between when a move is mailed and the postmark than from a Saturday afternoon to Monday are anticipated.

2. A distinction is made between a time complaint against an opponent who is habitually late and one who is prompt and then suddenly disappears (usually in a bad position). USCF does not enforce this rule well and I have attempted to improve it.

3. There will be a moratorium on time complaints during the Christmas holiday season. The time still counts, but we will give the post office time to get mail delivered before filing complaints.

4. Most postal chess organizations have a wastebasket rule to the effect that you may not "insult" or "annoy" your opponent. That is well and good but what one person regards as good humor may "insult" another. Or, a descriptive term applied to your opponent may be accurate and the opponent not care for the description. Much of the fun in postal chess comes in the postcard chatter. Lasting friendships are formed in the course of a game. Generally, conversation during the game is permitted and to be encouraged, especially in an

MCA tournament. Your postal opponent becomes someone to talk to when you go to an over-the-board tournament. You feel, even as a newcomer, that there is someone there you already know. You have the right to ask for silence: to require that your opponent put nothing on the card other than the chess information needed to transmit the move, identify the section and keep the time records. Hopefully we won't need to invoke the rule, but a postal tournament means exchanging cards with several people on about a weekly basis for a year or so. Such correspondence with someone who wants to argue politics or deluge you with religious tracts is no fun. The right to say "SHHH!" should cover the situation.

5. To get your point, I need the complete game score. That assures us a good supply of games for this column. You turn in the score otb, why should postal chess be different?

Humans vs. Computer

One of the pair of games between Alan Jones assisted by computer, and Barry Bartle and me in collaboration has finished with a checkmate at move 22--and victory for the humans. The other game will continue for a while. We are comparing notes and should show you the finished game next time. We fed the machine a bishop and got the tempi to launch the winning attack.

Hail Barry Bartle! 1983 U.S. Open Correspondence Chess Champion!

You already know Barry as a regular contributor to this column. He's who I can always depend on when I need a game or some notes in a hurry. Barry has just won the 1983 CCLA Grand National, otherwise known as the U.S. Open Correspondence Chess Championship. Winning a national championship is an occasion for featuring his games. His best games from the Grand National we have already shown you, so in honoring this champion we are using more recent games. See what Barry does with top-rated people in the 8th U.S. Correspondence Chess Championship.

In the first game, just call Barry "Hans Berliner". Remember the game in the World Championship finals in which Berliner beat Estrin using an improvement in an opening on which Estrin had written the book? Well, Barry was playing Doug Eckert. I knew the name of his opponent but had not seen the game. Fred Lindsay was selling books at the 1987 Michigan Open, and I saw he had a book by Eckert, so I bought it and gave it to Barry. He took one look and blanched. Just look why:

Barry Bartle - Douglas D. Eckert
8th U.S. Correspondence Chess Championships
Section 8P020
Sicilian Keres' Attack B81/4
Notes by Barry Bartle

1.e4 c5 2.Nf3 e6 3.d4 cxd4 4.Nxd4 Nf6 5.Nc3 d6 6.g4
Keres' Attack, Sicilian Scheveningen. See book of this title by Douglas D. Eckert, a book the existence of which I was ignorant until this game was nearly half over. Certainly I'd never have

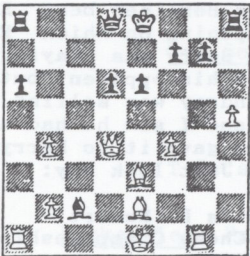
POSTAL CHESS

(From preceding page)

The second game is against another of the powerhouse players one meets in the U.S. Correspondence Championship. He made one slip and Barry nailed down the win.

Barry Bartle - Richard N. Bauer
8th U.S. Correspondence Chess Championship
Section 8P017
Sicilian B44/14-17 (by transposition)
Notes by Barry Bartle

knowingly ventured 6.g4 against the guy who wrote the book. The fact that the title of the book names a variation initiated by White does not mean that Eckert favors the White side. It could simply mean that the play interests him from either side. In other words there is no element of using his weapons against him. I still don't know which side he favors, if any. 6...h6 7.Rg1 Nc6 8.Be3 a6 9.h4 h5 If the writer of the book leaves book, are you still in the "book"? I didn't own Doug Eckert's book until it was too late to help. Now, for the first time, to help write these notes, I am looking up Eckert's book at this point. See page 85 (Chess Enterprises, Inc. 1986): "Now White has a choice between the older 9.Be2 and the Newer 9.Qe2. Against 9.h4 Black should play 9...h5! when the white Bishop is unfavorably placed in comparison to lines studied in section E." Following his own advice Doug plays 9...h5. In my opinion the right sequence of moves leading up to this position is yet to be worked out by theory and put into practice. There is a cat-and-mouse game going on that is very difficult to follow. Fortunately for Chess some opening problems resist solution. 10.gxh5 Capturing away from the center felt, at the time, very odd, but 10.g5 Ng4 11.Rxg4 (the N can't stay there) hxg4 12.Qxg4 e5 13.Nf5 g6 14.O-O-O gxf5 15.exf5 is almost worth a whole R, but not quite. So the text is it, since both h4 and g4 would need protection if I leave g4 where it is and he then plays hxg4. 10...Nxh5 11.Be2 Nf6 The delicious point being that 11...Qxh4 12.Bg5 Qh2 13.Nf3 Qh3 14.Bf1 wins the Q. Doug was distracted in this game by moving, and by the time-out while he studied for his CPA exam (he passed the exam). He wasn't so distracted he'd drop his Queen that easily. 12.h5 There is nowhere else to put it. 12...Bd7 That (expletive deleted) Sicilian! Look at this, no weaknesses, and he threatens to leave town via O-O-O. 13.f4 b5?! If 13...Nxh5 14.Rh1 14.a3 b4 Hmmm. He must be planning to stay in the center, which is another Sicilian hangout. Doug is one of those otb Masters who seems to play postal games for fun rather than ratings. (Postal boosters beware. Just because there are some otb Masters who have so-so postal ratings, please don't make the ludicrous leap, commonly made, concluding that postal players are stronger. Many otb masters, in their postal games, are in effect giving odds.) 15.Nxc6 If as I suspect, Doug played this game at virtually blitz speed, with more time spent filling out the card than looking at the board, then he might have overlooked this in-between move. 15...Bxc6 16.axb4 Nxe4 17.Nxe4 Bxe4 18.Qd4 After the game my opponent volunteered he'd underestimated this move. It is rare that b4 is worth more than e4. In effect



Black's B has been lured to e4 so that the Queen can maneuver with tempo. 18...Bxc2 19.Qc4 Rc8 20.Qxa6 Be7? Other moves prolong the game, d5 for example, but it is hopeless. You don't need variations: White has almost the entire space, Q, 2Rs, 2Bs on an open board against a King marooned. Look away, i

is too brutal; and Douglas is a fine fellow. 21.Bb-

1-0

Mr. Eckert sent me the most gracious and informative "resigns" card I've ever received. Thanks for the game, Doug.

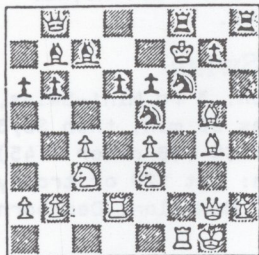
1.e4 c5 2.Nf3 e6 3.d4 cxd4 4.Nxd4 Nc6 5.Nb5 Declining to enter the Taimanov, which begins 5.Nc3 a6. This game began more than a year ago and I can't remember how I had the nerve to play this nondeveloping move against a higher-rated player, a player ranked Master in postal and otb. Furthermore I can't find the reference book I used except ECO. All I can remember is that my reference showed Karpov doing well with Nb5 so that was good enough for me. 5...d6 6.c4 Nf6 7.N1c3 a6 8.Na3 This retreat, instead of Nd4, rests on the consideration that Black will be cramped so the idea is to keep him cramped by avoiding exchanges. Keeping this up for 33 moves might have been overdoing it, however. 8...b6 I now see that this can transpose to book lines, but at the time I thought the move was a liberty. 9.Be3 Bb7 10.Be2 Now we have Karpov-Kasparov: see Informant 38/224. 10...Nb8 What's THAT? Shades of Tarrasch's spoof of Nimzovitch. 11.f3 Probably the only way to defend e4, as I don't want the Q on the c-file. At the time, my plan was O-O/Qe1-f2/Na4 piling up on b6 which in my ignorance I thought a mistaken move. Now I've discovered in Nunn's excellent book Beating the Sicilian, page 90, the same idea, same move, in a somewhat similar setting. "...it is hard for Black to undertake anything active if White just sits tight and refuses to make an aggressive move," and that is exactly what I did in this game. As proof, notice that no piece is exchanged until move 33! A record for me. This game is not my style. That is why the game was so anxiety-provoking. I felt as if I had a powerful monster in a flimsy cage. (My apologies to the most cordial Rick Bauer.) 11...Nbd7 This developing move takes only one move. Here it has taken three. Can Black afford to hand White 2 tempi? Could Black have read my mind and therefore wanted to protect b6? 12.O-O Qc7 13.Rc1 Be7 14.Qe1 O-O 15.Qf2 As per the plan. How will he defend Na4? 15...Rac8 16.Rfd1 I change my mind. Now I wouldn't take b6 if it were willed to me. I figure such a strong player must be deceiving me. 16...Bd8 He protects it anyway! Instead of protecting everything through tortuous maneuvers he might have offered a pawn for activity. 17.g4 What luxury. I can make threatening moves either side. 17...h6 18.Rc2 I can threaten the points d6, b6, and g5, and the initiative and a space advantage give me freedom to alternate. Rick Bauer is a patient player. He was patient for a year. You can bet he's won many a game through just such cool defense. He had every reason to believe that sooner or later I'd leave the cage door open just a crack. 18...Qb8 Nimzovitchian castling of the Queen. 19.Rcd2 Bc7 The combined reflection time for this game was 220+ days. I took three days on my reply, but also used the turnaround time for many hours of analysis. 20.g5 Conservative. But I didn't trust my tactics for the probably stronger 20.h4. For example: 20.h4 h5 21.g5 (21.gxh5 Nxh5 22.f4 Nf6 and e4 is weak. What do I do about Qa8!) Nh7 22.f4 g6 23.Bxh5 gxh5 24.Qf3 Qa8 25.Rg2 might succeed, but I wanted certainty. 20...hxg5 21.Bxg7 Rfe8 Maybe to play Nf8/h7, or to prepare Kf1 22.Qg2 Threat: Bh6 22...Kf8 23.Nc2 This move exerts no direct pressure. This, plus the fear he'll find a way to break out, can stop a player from using

Continued on next page

POSTAL CHESS

(From preceding page)

L the pieces. 23...Ke7 What an incredible move! The idea is to get a R on the h-file. Black's setup is sometimes called "The Hedgehog" because he hunkers down and you can't get at him. 24.Ne3 Rh8 25.f4 Weakens e4, but there is no other useable "lever". 25...Kf8 26.f5 Ne5 Defying me to double the f-pawns. 27.Bxf6 gxf6 28.Kh1 Ke7 and White has regressed. Stronger is 26...e5, but probably still loses because of the hole at d5, and the weakened



d6. 27.fxe6 fxe6 28.Rf1 Kf7 The Black King moves 8 times in this game. So far still no pieces have been exchanged. 29.Bg4 Rcf8 DIAGRAM. Neither side has castled, there is an open board, 4 bishops, 4 rooks and 2 queens! 30.h4 The winning idea. Stops any attack on h2, but primarily so the Q can get to h3. 30...Ke7 31.Rdf2 Bd8 32.Qh3

Nd3? The first outright mistake. The move appears to overlook a discovered attack by the Queen. The Queen makes so many vertical and diagonal strong moves, I've always thought that horizontal Queen moves can be overlooked. Such Queens are a "Cop on the corner" as I've heard it said in coffeehouses. 33.Ned5+ Bxd5 Rick offered "if 34.Qxd3 Bc6", for reasons unknown. 34.Nxd5+ exd5 35.Qd3 Ke8 36.exd5 Be7 37.Qg6+ Kd8 A double exchange sac is coming up. 38.Rxf6 gxf6 39.Rxf6 Rfg8 40.Rxd6+ 1-0. In view of mate in two, 40...Qxd6 41.Qxg6+ Ke8 42.Qxe7 mate or 40...Kc7 41.Rd7+ Kc8 42.Ra7+ Kd8 43.Bxe7 mate..

Games Needed

The file is getting a bit sparse. It will be awhile before we get an influx of new games from the 1988 MCA tournament or the 1986 MCA finals. So if you've been waiting to get one into this column, now is a good time!

THE INVITATIONAL CHAMPIONSHIP

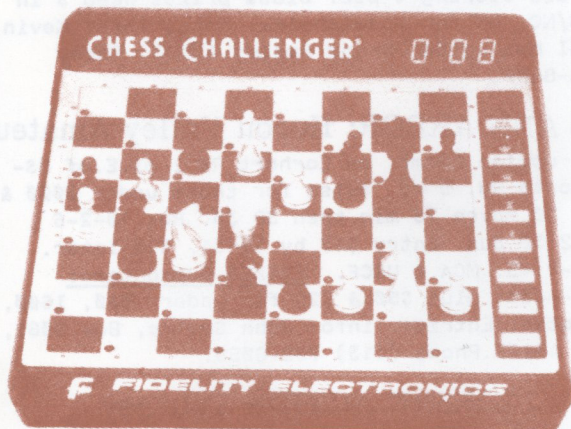
Invitations the Michigan Invitational Championship will go to winners of the two qualifying tournaments (Trenton 9/24-25 and Lansing 10/8-9), to the 1988 Mich. Open Champion and to Michigan's five highest rated players. No entry fee. \$75 forfeit fee 1st day refunded last day.

Finals for the event will be Oct. 22-23 and Nov. 5-6 in Jackson at the First Presbyterian Church, 309 S. Jackson St. Dan Burg, the director, says it will be a 7-rd. round robin among the 8 invited players.

SCHEDULE: Rds 1 & 2 Sat. 10/22, Rds 3 & 4 Sun 10/23. Rds 5 & 6 Sat. 11/5, Rd 7 Sun 11/6 PRIZES: 67% & 33% of profits from the two qualifier tournaments. No entry fee, only a \$75 deposit, refunded last day.

The Michigan Invitational is part of the 1988 celebration of the 100th birthyear of Andrew H. Palmi (1888-1962), founder of MCA in 1930. The 1988 Invitational recalls the first 18 years, when the annual state champion was decided by a round robin among top players invited from each club.

The state championship was changed to an open Swiss system in 1949, and participation increased over the following years to a high of 252 a few years ago. Second highest was 214 this year.



The Mach. III Master!!!!
Rated 2264

ELECTRONIC GAMES

1678 Mayfield Road - Lapeer, MI 48446

lowest prices - GUARANTEED

includes FREE
2 WEEK SATISFACTION GUARANTEE
DOUBLE MANUFACTURERS WARRANTY
Shipping, A-C Adaptor

The 'PHANTOM'
Moves it's own pieces!
(Super Sale on Pre-orders)

FIDELITY DISTRIBUTOR

CALL TOLL FREE for expert honest advise all makes
1-800-227-5603

Michigan Residents 313-664-2133

ALSO: SUPER NOVAG, Gin, Backgammon, Bridge, Scrabble,
Go, Chinese Chess, Shogi, Cribbage

CHESS TOURNAMENT CALENDAR

AVOID SCHEDULE CONFLICTS

Avoid conflicts when scheduling tournaments. For free listing here write or call MCA, 2177 Michigan, Eaton Rapids MI 48027 ph. (517) 646-6142 for non-conflict date. Open 1-day events should be over 25 miles from any other open tournament on same date. Open multi-day tournaments must be 75 miles from any other open multi-day tournament on the same dates. MCA and USCF memberships are required (or T-options); Dates of open state championships, not available for other events.

Oct 8 DETROIT Clippert Quads

Clippert Middle School, 4725 Martin (N. of Mich., W. of Livernois) Rd. Robin sects. of 4 by ratings. 40/1, SD/30. Reg. 8-8:30, \$5 late fee. Rds 9-12-3. No smoking. OPEN SECTIONS: entry \$8 by 10/1, \$10 later. MCA & USCF req. Prizes: 1st each quad, \$20 or \$10 & trophy. SCHOOL SECTIONS: (No MCA, USCF): Entry \$3 by 10/1, \$5 later. Info: Peter Nixon (313) 676-2985.

Oct 8-9 LANSING: Open to all. Mich Invitational Qualifier

Capitol Federal Bldg, 6510 S. Cedar (I-96 Exit 104, 2 blks S. on Penn. to Cedar & 2 blks N.). 4 rd Swiss, 40/100, then 25/60. ENTRY \$30 (\$27 to Mich. residents rated over 2100 or under 18 yrs old). PRIZES: \$100 or entry in Mich. Invitational; under 2000 \$50. RESERVE SECTION, Under 1800 & unrated: 5 rd Swiss, 40/90, then 30/60. Entry \$15. Prizes, 1f 25: \$80-35-15; top unrated \$20. Dan Burg, 2955 Rundtree C-3, Ypsilant 1 48197 (313) 572-1335.

Oct 9 MIDLAND Mini-Swiss

Dow Conference Center, 316 Fournie St. 3-Rd Swiss, sections of 6-10 by ratings. 45 moves 90 min., SD 30 min. Reg. 9-9:45. Rds 10-1-4. ENTRY \$5. Need MCA & USCF. PRIZES, each section: Half of entry fees for 1st place. NC, NS. John Warner, 1005 Scott, 48640. (517) 839-0225.

Oct 15 LAKE LEELANAU \$40/\$20 Mini

St. Mary's School, Co. Rd. #643 off #204 (20 miles NW of Traverse City). Sections of 8-10 by ratings; 40 moves 1 hr, 30 min. S.D. Reg. 8:30-9 a.m. Entry \$10 by 10/14, \$12 later. MCA & USCF or T-opt. Rds. 9:30-1-4:30. PRIZES, each section: 1st \$40, 2nd \$20. NS NC. Info: Bart Shields, Sugar Tree Hill, Maple City Phone (616) 228-6183.

Oct 15-16 FORT WAYNE, Ind: Region V

Airport Hilton, 3939 Ferguson Rd (Baer Airport). 5-rd Swiss, 2 sections. Reg. 8:30-9:30. USCF & state req. N/S N/C. OPEN SECTION: Entry \$30 by 10/10, \$35 at site (\$40 after 9:30). 50 moves 2 hrs. Rds 10-3-8 Sat., 9-2 Sun. PRIZES: \$400-250-100; Exp. \$100, "A" \$100, under 1800 \$100. RESERVE SECTION: Entry \$25 by 10/10, \$30 at site (\$35 after 9:30). Rds 10-2:30-7 SAT., 9-2 Sun. 45 moves 90 min. PRIZES, 1f 30 & 5 in class: \$250-150-100; under 1400 \$100, Unrated \$50. Hotel \$45, 1 or 2, (219) 747-9171. Entries: Robert J. Rice, Rt 1, Decatur IN 46733. Info Bob Rice (219) 724-7780 or Tom Harris (219) 749-6601. TD: R. Blaine.

Oct 22 Sa LANSING \$50/\$25 Mini-Swiss

Capital Federal Bldg, 6510 S. Cedar (I-96 Exit 104, cross Penn. W. to Cedar then S. 2 blks). 3-rd Swiss, sections 8-10 by ratings. PRIZES, Each section: 1st \$50, 2nd \$25. 40 moves 1 hr, SD/30. Reg. 8:30-9:15. Rds 9:30-1:00-4:30. ENTRY \$12. MCA & USCF. NS, NC. V.E. Vandenburg, TD, (517) 646-6142.

Oct 22 TRENTON Mini-Swiss

Haas Park Comm. Bldg. 72 Washington. 3 rd Mini-Swiss, sections 6-8 by ratings. 40 moves 90 min, then SD/30 Reg. 9-9:45, rds 10-1:30-5. ENTRY \$5 (\$6 after 9:45). MCA & USCF. PRIZES, each section: 1st \$20 or trophy. NS/NC. W's ok. Ken Roberts, 5019 McMillan, Dearborn Hts. 48127. (313) 565-2123.

Oct 29 ANN ARBOR.

Michigan Women's Championship

Adv. on page 23

Oct. 29-30 Gr. RAPIDS: Doug Westgate Memorial

Kentwood Comm. Center 355 48th St (between Eastern & Division). 4 rd Swiss, 2 sections. 50 moves 2 hrs., SD/30. Rds 10 & 3:30 Sat & Sun. Special event after Rd 2 Sat. nite. Reg. 9-9:44. MCA & USCF. ENTRY \$25 (\$5 more after 9:44). PRIZES, based on 45 total entries: OPEN SECTION--\$160-100-50; under 2000 \$75. RESERVE SECTION--\$125-75-40; under 1600 \$75, under 1400 \$75, unrated free USCF. Both sections: \$25 bonus to all scoring 4 pts. Class prizes need 3 in class. NS/NC. OK for Wheelchairs. Hotel info: Kevin Czuhai 661 Kellogg SE, Grand Rapids 40503. Phone (616) 458-8409.

Nov 5-6 ANN ARBOR: Huron Valley Amateur

EBA Club, Uomino Farms, on Earhart Rd 1 mi. E. of US-23 & Plymouth Rd. 5 rd. Swiss for those under 2000 & unrated. 30 moves 75 min then SD 30. Rds 10-2-6 Sat., 10-2:30 Sun. Entry \$17 by 10/31, \$19 later. Reg. 8:45-9:45. MCA & USCF. PRIZES Guaranteed: \$125--\$50--\$25; plus \$50 & \$25 for under 1800, 1600, 1400, unrated. Entries, info: John Smalec, Box 8061, Ann Arbor 48107. Phone (313) 769-6059.

Nov 12 JACKSON ACTION Tourney

St. Paul's Episcopal Church, 309 S. Jackson St. 5-rd Round Robin 6-player sections by ratings. 30 min. SD games. Reg. 9:15-9:45. Rds 10-11:30-1:30-3-4:30. ENTRY \$15. MCAS & USCF. PRIZES \$50-\$15 each sect. Info: Lineas Baze, 207 First St., Jackson 49201. (517) 788-6324 days.

Nov 12 DETROIT Clippert Mini-Swiss

Clippert Middle School, 4725 Martin (N. of Mich., W. of Livernois) Rd. Robin sects. of 6-8 by ratings. 40/1 then SD/30 min. Reg. 8-8:30 (\$5 late fee). Rds 9-12-3. OPEN SECTION: Entry \$8 before 10/1, \$10 later. MCA & USCF. Prize to 1st, each sect., \$40 or \$20 & trophy. SCHOOL SECTION: Entry \$3 by 10/1, \$5 later. No MCA or USCF needed. Rds. 9-12-3. No smoking. Info Pete Nixon, (313) 676-2985.

Nov 12 GRAND HAVEN Mini-Swiss

Community Center, 421 Columbus. 3 Rd Swiss, sections of 8-10 by ratings. 40 moves 60 min, 30 min. S.D. Roster 9-9:45., Rds 10-1:30-5. ENTRY \$10 (\$15 after 9:45). MCA & USCF. PRIZES, each section: 1st \$25, 2nd \$15. Rick Meads, 11065 Osborn, Grand Haven 49417. (616) 846-4734.

Fri & 9:30-3:30 Sat & Sun. 40/2, 20/1. 30 Grand Prix pts. NS/NC. Joe Feldman, 28449 Tapert Dr., Southfield 48026 (313) 357-1890

Dec. 11 Su LANSING \$50/\$25 Mini-Swiss

Moved to SUNDAY-- Same format as Oct. 23

Dec 11 Sa OAK PARK: Mich. Speed Champ.

Adv. on back cover

Dec. 17 Sa TRENTON Mini-Swiss

Same format as Oct. 22

Dec 18 Sa MIDLAND Mini-Swiss

Same format as Oct. 9

Nov 13 MIDLAND Mini-Swiss

Same format as October 9

Nov 20 LANSING \$50/\$25 Mini-Swiss

Moved to SUNDAY, same format as Oct. 23

Nov 20 Su TRENTON Quads

Haas Park Comm Bldg, 72 Washington. Round Robin sects. of 4 by ratings. 3 rds, 40 moves 90 min, SD/30 min. Reg. 9-9:45. ENTRY \$5 (\$6 after 9:45). MCA & USCF. PRIZES, 1st in each section \$20 or trophy. Ken Roberts, 5919 McMillan, Dearborn Hts, MI 48127. (313) 565-2123.

Nov 25-27 E.DETROIT: Motor City Open

Recreation Center 16600 Stephens (1/2 Mile Rd) East of Gratiot. 6 rd. Swiss, 1 section. A heritage tourney, the famous event promoted by the late Dr. Howard Gaba for 29 years. A \$3,000 PRIZE FUND: \$800-400-200-100-100; Exp \$200; Class A \$200-100, Class B \$200-100, Class C \$200-100. D/E/Unr \$150-100, top under 18 \$50. ENTRY \$27 by 11/14, \$35 at site. MCA & USCF. Reg. 8-9:30 a.m. 11/25. Rounds at 10:00-4:00

FUTURE TOURNEY DATES

- Dec 10 DETROIT: Clippert Action event
- Jan. 7-8 WAYNE COUNTY Open
- Jan. 15 TRENTON Quads
- Jan. 15 LANSING Tournament
- Feb. 11 DETROIT Clippert Quads
- Feb. 12 LANSING Tournament
- Mar. 11 DETROIT Clippert Mini-Swiss
- Mar. 19 LANSING Tournament
- Apr. 16 LANSING Tournament
- Apr. 8 DETROIT Clippert Action event
- Apr. 8 DETROIT Clippert Action Event

MICHIGAN INVITATIONAL FINAL

See story page 21.

Entry \$10 Reg. 8-9 a.m.

1988

MCA & USCF Required

MICHIGAN WOMEN'S CHAMPIONSHIP

SATURDAY OCTOBER 29 at DOMINO FARMS, ANN ARBOR

DIRECTIONS: US-23 to Plymouth Rd, then East 1 mile to Earhart Rd; North 1/2 mile to the site

4 RD. SWISS - 6 CASH PRIZES & 7 TROPHIES

Championship Trophy to top Michigan Resident

1st Place: \$100 & Trophy 2nd Place: \$50 & Trophy

Donated by Kellner Memorial Fund

1st under 1600 \$20 & Trophy

1st under 1400 \$20 & Trophy

1st under 1200 \$20 & Trophy

Top Unrated \$10 & Trophy

Four cash Class Prizes
donated by Paul Simmons

Trophy to Youngest Winning
one or more games.

GAMES 9:30, 12:00, 3:00, 6:00. 30 moves 60 minutes. Bring set & clock if possible. Come anyway.

INFO: GARY KITTS, MCA Pres., 1840 Boxwood, East Lansing MI 48823 (517) 337-3831

MICHIGAN SPEED CHAMPIONSHIP

- December 11, 1988 -

The Best Speed Tourney in Michigan

MORE PRIZES • NEW SITE • MORE FUN

PRIZE FUND*

| FINAL SECTION | FIRST CONSOLATION | SECOND CONSOLATION |
|---------------|-------------------|--------------------|
| 1st \$80 | 1st \$40 | 1st \$25 |
| 2nd \$40 | 2nd \$25 | 2nd \$20 |
| 3rd \$25 | Class B \$20 | Class C \$15 |
| 4th \$20 | C/Below \$15 | D/Below \$10 |
| A/Below \$15 | | |

\$5 Minimum to Winners of Preliminary Sections

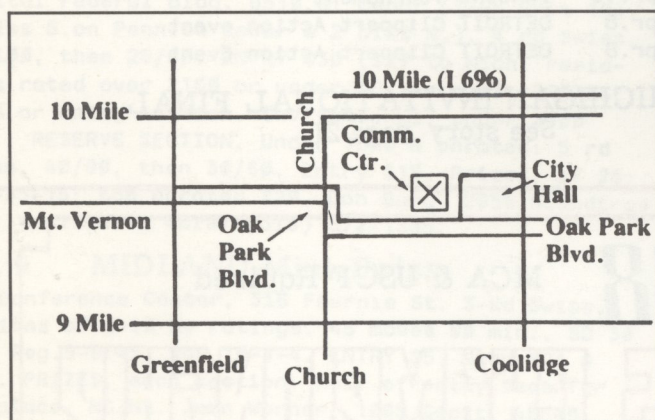
*Prize Fund will be 70% of all entry fees. Above prizes based on 53 entries.

SPECIAL FEATURES

- ★ Complimentary Coffee & Cookies
- ★ Michigan Speed Rules in Effect
- ★ Touch Move
- ★ 20-Move Draw Rule

A double speed tournament will be held if time is available.

| | |
|-----------|-------------------|
| Rd 1 6:00 | 4-round Swiss |
| Rd 2 6:15 | EF \$2 (\$1 each) |
| Rd 3 6:30 | Winners take all! |
| Rd 4 6:45 | |



Oak Park Community Center

14300 Oak Park Blvd.

(9 1/2 Mile Rd. West of Coolidge Hwy.)

REGISTRATION: 10:30 - 11:45 am

ROUNDS:

| | |
|--------------------|--------------------------|
| Preliminary Games | 12:00 (About 12/section) |
| Tie Break Games | 2:30 (If necessary) |
| Final/Consolations | 3:00 (About 16/section) |

ENTRY FEE: \$10

MEMBERSHIPS: MCA required for state residents (Regular: \$12; Juniors, Seniors: \$6)



2177 Michigan, Eaton Rapids, MI 48827

Address Correction Requested

NON-PROFIT ORG.
U.S. POSTAGE
PAID
LANSING, MICHIGAN
PERMIT NO. 429

Exp: 01/30/89

Kearsley High School LIBRARY
4302 Underhill Dr.
Flint, MI 48506