



# MICHIGAN

# Chess

Price \$3.00

## Familiar Faces/Familiar Places?



*MCA is making plans to reopen OTB activities in the near future! Be sure to follow coming events on its website!*

## Table of Contents

Perplexing Problems	4
MCA Online Chess League	5
Games from MCA Chess League	6
Annotators' Workshop	7
Notes & Announcements	9
Hall of Fame Tribute Games	10
Michigan Chess Clubs	11
Top 100 & MI Champions	Back Page

### The Michigan Chess Association

is a non-profit organization, which promotes chess education for juniors and adults by publishing Michigan Chess. We also aid schools, chess clubs and local chess events with publicity, information and supplies; by organizing Michigan championship events.

Published by the Michigan Chess Association  
Affiliated with US Chess Federation  
Visit us online at [www.michess.org](http://www.michess.org)  
Send submissions to [michessmag@gmail.com](mailto:michessmag@gmail.com)  
Editor: Lonnie Rutkofske

## Summer 2021



## Membership Fees

<u>Membership Type</u>	<u>1 Year</u>
Regular Membership with Magazine	\$15
Regular Membership without Magazine	\$10
Senior (over 65)	\$10
Family Membership	\$25
(all members must reside at the same address)	
Life Membership	\$300

If you choose, you can forward membership fees to : Jeff Aldrich P.O. Box 40 Flint, MI 48501.

Please make checks or money orders payable to

### Michigan Chess.

For subscriptions to Canada or Mexico, add \$10.

For overseas subscriptions, add \$20.

All amounts are given in US dollars.

## Advertising Rates

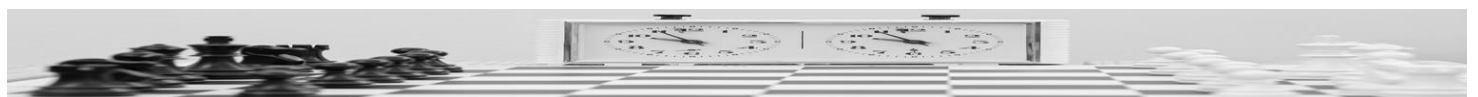
### Standard Rates

Full page	7.5 x 9.75	\$110
Half page	7.5 x 4.75	\$70
Quarter page	Flexible	\$45

### Rates for Michigan Chess tournament organizers

Full page	7.5 x 9.75	\$75
Half page	7.5 x 4.75	\$40
Quarter page	Flexible	\$20

President	Jeff Aldrich	Davison	(810) 955-7271	jeffchess64@gmail.com
Vice President	Loren Schwiebert	Canton	(734) 718-2117	loren@wayne.edu
Treasurer	Bradley Rogers	Sterling Heights	(248) 255-7449	bradleyrogers22@msn.com
Secretary	Tim Kuhn	Grosse Pt. Woods	(313) 451-1071	timckuhn53@gmail.com
Elected Director	Raymond Garrison	Ann Arbor	(734) 945-5951	raygarrison@arborchess.com
Elected Director	Lei Wang	Troy	N/A	ray2005@gmail.com
Elected Director	Norman Haygood	White Lake	(248) 366-0954	nhaygoodjr@aol.com
Appointed Director	Tony Nichols	Lansing	(517) 763-6756	sensie48910@yahoo.com
Appointed Director	Christopher Hausner	Troy	N/A	chausner@gmail.com
Appointed Director	Stan Jarosz	Grand Rapids	(313) 295-2549	sjarostan@netscape.net
Appointed Director	James Sawaski	Newberry	N/A	jsawaski@yahoo.com
Appointed Director	Kevin Fite	Southfield	N/A	fitek@yahoo.com
Appointed Director	Bryan Wilson	Detroit	(313) 878-2807	shunzhu22@gmail.com
Scholastic Director	TBA			
Editor	Lonnie Rutkofske	Marysville	(810) 388-9219	michessmag@gmail.com



## Honorary Life Members

These members have been designated Honorary Life Members of the Michigan Chess Association in recognition of their services and contributions to chess in Michigan. They have honored the MCA far more than the Association could honor them. (\* Deceased)

H. Jay Carr*	Fred Cramer*
Ron Finegold*	Howard Gaba*
John Griffin	Thomas A. Jenkins*
Lou Kellner	David Moody
Paul Poschel*	Paul Simmons*
Mike Skidmore	Harold Steen*
Fjola Vandenburg*	V. E. Vandenburg*
Fred Lindsay	GM Ben Finegold
Paul Grams*	

## MCA's Hall of Fame

V. E. Vandenburg*	Paul Poschel*
J. D. Brattin*	Leon Stolzenburg
Fjola Vandenburg*	Marvin Palmer
Howard Gaba*	George Eastman
Andrew Palmi*	David Moody
Ron Finegold*	Harold Steen*
Paul Simmons*	H. Jay Carr*
Mike Skidmore	Peter C. Nixon
Stan Beckwith	Fred Lindsay
GM Ben Finegold	John Brooks
Paul Grams*	Alan Kaufman
Dr. Ed Mandel	

## Patron Members

Contributing \$75 or more in addition to membership dues makes you a Patron Member. We list your name for a year. All donations to the MCA are tax deductible.

Jesse Chang	Virginia	Stanley	Mikhail
Chris Hausner	Vandenburg	Beckwith	Korenman
Darryl	Benjamin	Sergey	Joseph
Ferguson	Akselrod	Solovyev	DiSano

## EDITOR'S NOTE

The cover might look somewhat familiar because it attempts to remind readers that as we gear up for normalization of chess competition, it would be a good thing to remember those whom we have played in the past. We need to refocus our endeavors toward becoming reacquainted with chess friends and foes alike. A year and then some has proven to be quite a hiatus from the game we love. Despite our craving to rekindle the past, and reminisce about times gone by, we should be looking to the future by pulling together toward a vision of what the landscape of local chess will be like in our state and how we can be a part of rebuilding and transforming Michigan Chess into the beacon of hope, renewal, and positive energy. While still celebrating the people and experiences that have played the pivotal role in shaping the history of chess in Michigan, it is imperative that we reactivate and redouble our efforts in "building back better" our previous successes to launch the vigorous initiative it will take to for Michigan to regain its station as one of the premier chess locations in the mid-west. So, for those that have been content to remain in the shadows, and "let the other person do it", now is the time to step up and get involved in the chess scene at all levels, whether it be at the local, state or national level, there is little time to waste in making a difference!

Lon Rutkofske - [michessmag@gmail.com](mailto:michessmag@gmail.com).

### Contributors to this issue:

- Game reconstruction and analysis: Chris Eagle.
- Mailing, tournament reports, photographs, advertising, publisher: Jeff Aldrich.
- Quotations: *Chess Quotations from the Masters* - Henry Hunvald, 1972.
- Problems: *One Hundred Years of the American Two-move Chess Problem* by Kenneth S. Howard, Dover Publications, 1962.
- Proof Reading: Diane Rutkofske; William Wingrove.
- Articles/Reports: Lon Rutkofske; Jeff Aldrich; Chris Eagle.
- Photographs: Jeff Aldrich, Lon Rutkofske, Chistopher Billick.
- Graphics: [www.shutterstock.com](http://www.shutterstock.com); [cartoon stock.com](http://cartoon stock.com); [www.publicdomainvectors.org](http://www.publicdomainvectors.org).
- Print Vendor: TGI Direct: Flint, Michigan (810) 237-5217; [cory.s@TGIDirect.com](mailto:cory.s@TGIDirect.com).
- All board diagrams created using Chessbase 14 or Fritz 12.

## Chess Associations in Michigan

Michigan Chess Association [www.michess.org](http://www.michess.org)  
 West Michigan Chess [www.westmichiganchess.com](http://www.westmichiganchess.com)

*Websites for chess clubs in Michigan are listed in "Chess Clubs" near the back of the magazine.*

## National/International Chess Websites

United States Chess Federation [www.uschess.org](http://www.uschess.org)  
 World Chess Federation (FIDE) [www.fide.com](http://www.fide.com)  
 Chess Federation of Canada [www.chess.ca](http://www.chess.ca)  
 English Chess Federation [www.englishchess.org.uk](http://www.englishchess.org.uk)  
 German Chess Federation [www.schachbund.de](http://www.schachbund.de)  
 Russian Chess Federation [www.russiachess.org](http://www.russiachess.org)

### *Did you know???*

*You can connect with the Michigan Chess Association on Facebook™! Just search for "Michigan Chess Association" and Like MCA! It's that simple!*

## Shop at AmazonSmile

and Amazon will make  
a donation to:

Michigan Chess  
Association

Get started



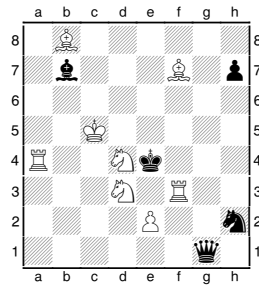
The schedule to the left indicates the timelines for production of **Michigan Chess Magazine**. Should writers, advertisers and contributors adhere to these guidelines, it will ensure that a consistent, timely, high quality publication should be in the hands of members within a month after it goes to print. **Contributors are asked to submit text in MS Word and photos in JPEG formats to facilitate efficient production processes.**

2020 Publication Schedule	To Editor Deadline	To Printer
Spring- January thru March	Feb. 9th	Feb 15th
Summer - April thru June	May 9th	May 15th
Fall – July thru September	Aug 9th	Aug 15th
Winter - October thru December	Nov 9th	Nov 15th

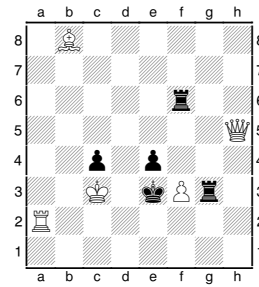
The Perplexing  
Problems  
of Kenneth S.  
Howard!

Quiz 10

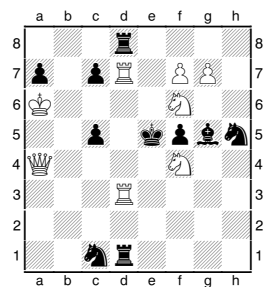
In each problem  
find White's key  
first move!  
Solutions can be  
found on page 6.



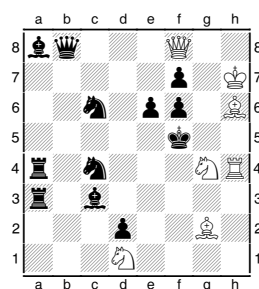
1. White to move and mate in two moves.



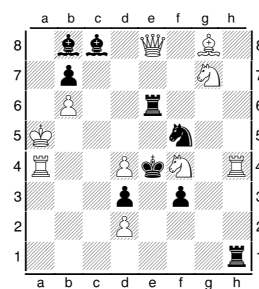
2. White to move and mate in two moves.



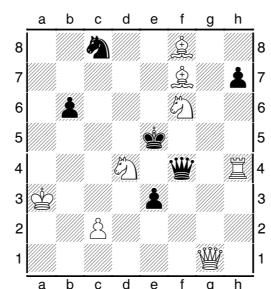
3. White to move and mate in two moves.



4. White to move and mate in two moves.



5. White to move and mate in two moves.



6. White to move and mate in two moves.

*There's not the mystery in  
ten murders that there is in  
one game of chess.*

Arthur Conan Doyle

CHESS IS A MATTER OF DELICATE  
JUDGEMENT, KNOWING WHEN TO  
PUNCH AND HOW TO DUCK.

Bobby Fischer

**Sidebar on Chess:** *This space is reserved for chess-related information,  
items of interest, articles/stories from the internet.*

[https://youtu.be/vcUAVy7\\_q4E](https://youtu.be/vcUAVy7_q4E)

<https://slate.com/human-interest/2021/02/best-chess-sets-tools-strategy-grandmasters.html>

<https://www.wired.com/story/best-chess-apps/>

<https://en.chessbase.com/post/miguel-nadorf-a-beautiful-love-story-part-1>

<https://en.chessbase.com/post/miguel-najdorf-a-beautiful-love-story-part-2>

<https://en.chessbase.com/post/outstanding-john-donaldson-s-bobby-fischer-and-his-world>

<https://www.zmescience.com/other/feature-post/best-chess-player-history-04032021/>

<https://en.chessbase.com/post/meeting-don-miguel>

<https://techcrunch.com/2021/04/15/garry-kasparov-launches-a-community-first-chess-platform/>

# Port Huron Chess Club takes first place in MCA Online Chess League

In an unexpected turn of events, the **Port Huron Chess Club** claimed the first-place crown with a 3-1 victory over **Team CK** after it forfeited its top three boards. The situation left everyone dumbfounded and scratching their heads incredulously, most especially TD Jeff Aldrich, who was forced to declare the massive default as only **Larrance Xing** was the lone team member to make an appearance!

## Round 6 Results as of March 12, 2021

Color	Port Huron Chess Club		Chess.com	Result	Result	Color	CK		Chess.com
W	Huso	Avdic	REDCAPA63	1.0	0.0	B	Justin	Liang	agent - JL
B	Alan	Gregg	alanmike75	1.0	0.0	W	Nathan	Ouyang	ergnedstrgfw
W	Lonnie	Rutkofske	ishking	1.0	0.0	B	Justin	Song	jiawen5
B	William	Wingrove	williamwingrove	0.0	1.0	W	Larrance	Xing	gb2U84
				<b>3.0</b>	<b>1.0</b>				
Color	Kellogg Chess Club		Chess.com	Result	Result	Color	Ford Chess Club		Chess.com
W	Eric	Kellogg	ericmk96	1.0	0.0	B	Clenio	Oliveira	clenio0
B	Alexander	Kellogg	MrShakes	0.0	1.0	W	Larry	Castleberry	lcastleb1
W	David	Dumke	NE-rdnase	0.0	1.0	B	Alonzo	Long	killzone82
B	Christopher	Bousho	TahmRamsay	0.0	1.0	W	Dennis	Greggio	dgreggio
				<b>1.0</b>	<b>3.0</b>				
Color	Rampaging Rooks		Chess.com	Result	Result	Color	Independents		Chess.com
W	Evan	Morgan	explodingmacaroni	0.0	0.0	B	Lydia	Aldrich	ninja500
B	Joseph	Brumley	El_Gringo12	1.0	0.0	W	Brian L	Morris	Honeybrook
W	Ryan	Morgan	honeybadgerer	1.0	0.0	B	Jan	Burdzinski	jaybyrd56
B	Daniel	Brumley	Paratrooper104	0.0	1.0	W	Aloke	Hede	ahede85w
				<b>2.0</b>	<b>1.0</b>				

Indicates forfeit

## Final Results as of March 12, 2021

		Match	Game
1	Port Huron Chess Club	4.5	15.5
2	CK	4.0	15.5
3	Ford Chess Club	4.0	14.5
4	Kellogg Chess Club	2.0	9.5
5	Independents	1.5	7.0
6	Rampaging Rooks	1.0	2.0

## Round 6 Games from the MCA League:

Xing, Larrance (1666) - Wingrove, William (1422)

[B96] Sicilian Najdorf

Live Chess Chess.com, 12.03.2021

1.e4 c5 2.Nf3 d6 3.d4 cxd4 4.Nxd4 Nf6 5.Nc3 a6 6.Bg5 Nbd7 7.f4 e6 8.Qd2 Be7 9.Be2 b5 10.Nc6 Qc7 11.Nxe7 Kxe7 12.0-0-0 Rd8 13.f5 e5 14.Nd5+ 1-0

Greggio, Dennis (1028) - Bousho, Christopher (1209)

[B08] Pirc Defense

Live Chess Chess.com (6), 12.03.2021

1.e4 d6 2.d4 Nf6 3.Nc3 g6 4.Be2 Bg7 5.Nf3 0-0 6.0-0 c5 7.Be3 Nc6 8.dxc5 d5 9.exd5 Na5 10.b4 Nc4 11.Bxc4 Ng4 12.Bd4 e5 13.dxe6 Bxe6 14.Bxg7 Kxg7 15.Bxe6 fxe6 16.Ng5 Qxg5 17.Ne4 Qe5 18.Qxg4 Rf4 19.Qg5 Qxe4 20.Rae1 Qxb4 21.Qe5+ Kf8 22.Qh8+ Kf7 23.Qxa8 Rxf2 24.Qc8 Rxf1+ 25.Rxf1+ Kg7 26.Qf8# 1-0

Kellogg, Eric (1889) - Oliveira, Clenio (1676) [E05]

Open Catalan

Live Chess Chess.com (6), 12.03.2021

1.d4 d5 2.c4 e6 3.Nf3 Nf6 4.g3 Be7 5.Bg2 dxc4 6.0-0 0-0 7.a4 Nc6 8.e3 Na5 9.Qc2 Re8 10.Nbd2 c6 11.Nxc4 Nxc4 12.Qxc4 Qd5 13.Qc2 Qd8 14.Bd2 Nd5 15.e4 Nb4 16.Qb3 a5 17.Rad1 Qb6 18.Bc3 c5 19.e5 Qc6 20.Nd2 Nd5 21.Qa2 Bd7 22.Ra1 Red8 23.Qb1 Be8 24.Nb3 Qb6 25.Qc2 Nb4 26.Qd2 c4 27.Nc1 h6 28.Kh1 Bg5 29.f4 Be7 30.f5 Bg5 31.Qe2 Rac8 32.fxe6 fxe6 33.Qf3 Bc6 34.Qf7+ Kh8 35.Ne2 Bxg2+ 36.Kxg2 Qc6+ 37.Qf3 Nd5 38.Bxa5 Rd7 39.Kh1 b6 40.Bc3 Ra7 41.h4 Be3 42.Kh2 Kg8 43.h5 Bg5 44.a5 b5 45.Nf4 Rf8 46.Qe4

Qe8 47.Nxd5 exd5 48.Qxd5+ Kh8 49.Rxf8+ Qxf8 50.Qg2 Qf7 51.g4 Qf4+ 52.Kh1 Qf8 53.Rf1 Qe7 54.Qe4 b4 55.Be1 Rxa5 56.d5 Qd7 57.Rf8# 1-0

Morgan, Ryab (504) - Burdzinski, Jan (1124) [B18]

Classical Caro-Kann

Live Chess Chess.com (6), 12.03.2021

1.e4 c6 2.d4 d5 3.Nc3 dxe4 4.Nxe4 Bf5 5.Ng3 Bg6 6.Nf3 Nf6 7.Ne5 e6 8.Nxg6 hxg6 9.Qd3 c5 10.dxc5 Qa5+ 11.Bd2 Qxc5 12.Qb5+ Nc6 13.Qxc5 Bxc5 14.Bb5 Ng4 15.0-0 0-0-0 16.Ne4 Nxh2 17.Nxc5 Rxd2 18.Rad1 Nxf1 19.Rxf1 Rd5 20.Bxc6 Rxc5 21.Be4 Rch5 22.g3 Rh1+ 23.Bxh1 Rd8 24.Re1 Rd3 25.Kg2 Rd2 26.Rc1 e5 27.Kh3 Rxf2 28.Bd5 f5 29.Be6+ Kc7 30.Kh4 Rh2+ 31.Kg5 Rh5+ 32.Kxg6 Rh6+ 33.Kxf5 Rh5+ 34.Kg4 Rh6 35.Bf5 Rh2 36.Kf3 Rh5 37.Ke4 Rg5 38.Kxe5 Rxg3 39.Rd1 Re3+ 40.Kf4 Re2 41.Rd7+ Kc6 42.Rxg7 Rf2+ 43.Kg5 Rg2+ 44.Kf6 Rf2 45.Re7 a5 46.Rd7 1-0

Castleberry, Larry (1510) - Kellogg, Alexander (1336)

[C47] Giuoco Piano

Live Chess Chess.com (6), 12.03.2021

1.e4 e5 2.Nf3 Nc6 3.Bc4 Nf6 4.Nc3 h6 5.a3 a5 6.d3 Bc5 7.h3 d6 8.0-0 0-0 9.Be3 Ba7 10.Bxa7 Nxa7 11.Nh2 Bd7 12.f4 b5 13.Ba2 exf4 14.Rxf4 b4 15.Nd5 Nxd5 16.Bxd5 Rb8 17.Qf3 Be8 18.axb4 c6 19.Bc4 Rxb4 20.Ng4 d5 21.Nxh6+ Kh7 22.exd5 cxd5 23.Nf5 dxc4 24.Qh5+ Kg8 25.Rh4 f6 26.Qh7+ Kf7 27.Qxg7+ Ke6 28.Re4+ Kd5 29.Rd4+ Kc6 30.Rxd8 1-0

The Perplexing Problems  
of Kenneth S. Howard from  
*The American Two-Move  
Chess Problem*; Dover  
Publications; 1962.

- #1 Kb6 Edgar Holladay - 1951
- #2 Qh4 Chas. W. Sheppard - 1951
- #3 Qc6 Eric M. Hassberg - 1951
- #4 Ne5 Chas. W. Sheppard - 1952
- #5 Qg6 Francis J.C. DeBlasio - 1952
- #6 Qf1 B.M. Berd - 1953



CartoonStock.com

## Annotators' Workshop



This month we have two games from the 2021 Port Huron Chess Club annual championships. I first played at the PHCC over 40 years ago, when I was given a warm welcome by then (and still) President Lonnie Rutkofske. The excellent PHCC newsletter, Chess Chatter, has been edited and published by Lonnie every two months since before I first went to the club. This month's games are taken from the latest issue.



**Chris Eagle** played in tournaments from 1980 to 1996, with many top-10 finishes in the Michigan Open, Motor City Open, and Michigan Masters-Experts. He retired from tournament play with a USCF rating of 2146. Chris' chess highlights include winning the 1995 U.S. Amateur championship, tying for first at the 1991 USCF Region V championship, and beating GM Arthur Bisguier at the 1992 U.S. Open. Chris still follows chess, plays on [chess.com](http://chess.com), and occasionally coaches. To help with annotations, he uses *Chessbase* and *Stockfish*.

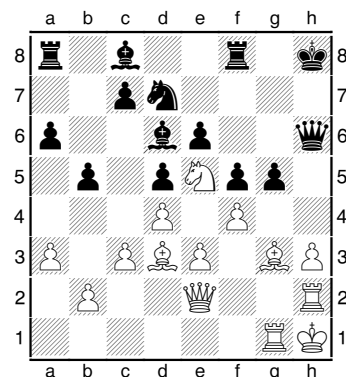
### Jones, Avery (1738) - West, Tony (1945) [A80] Dutch Defense

PHCC Online Chess Champs Lichess.com (6),  
21.02.2021 [ceagl]

**1.d4 f5 2.Nf3 Nf6 3.Bg5 d5** [Both sides choose an uncommon development scheme and we have an uncommon position after only 3 moves. White usually fights against the White squares with g3 and Bg2. Black seldom commits to ...d5 so quickly.] **4.Nbd2 Nbd7 5.e3 e6 6.Bd3 Bd6 7.c3** [Both sides have developed quite passively. White's best try is to gain some space with 7.c4. 7.c3 commits him to defense

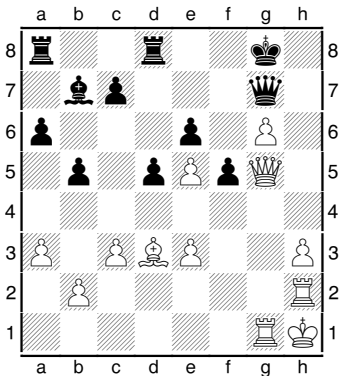
on the K-side without counterplay elsewhere on the board.] **7...0-0 8.0-0 Qe8 9.h3 Ne4 10.Bf4 Ndf6 11.Ne5 g5 12.Bh2 Nxd2 13.Qxd2 Ne4 14.Qe2 h5?!** [Suddenly what looked like a boring game gets very interesting! Black goes all-in on a pawn-storm. But if you look at the elements of the position, you'll see that Black is unprepared for this and it's actually White who's able to take advantage of the open position. Except for one R (which he'll soon get into the game), all of White's pieces are on the K-side. Black has no pieces in front of his K and his Q-side is undeveloped.]

**15.f3 Nf6 16.Rf2** [16.g4! immediately open lines on the K-side and demonstrates that how much better placed the White pieces are for K-side action. 16...hxc4 (16...Bd7 17.Qg2; 16...fxg4? frees White's B, while Black's is trapped.) 17.hxc4 Bd7 18.Qg2 and the weakness of the Black g-pawn and nearly naked K give White a big edge.] **16...a6 17.Kh1 b5 18.a3 h4 19.g3!** [White has prepared to quickly mobilize his forces and so opens some lines. Meanwhile, Black has still not developed his K-side.] **19...hxc3 20.Bxc3 Qh5 21.Rh2 Nd7 22.f4** [Right idea, but wrong pawn. Don't trade pieces when you're attacking.] [22.h4! opens the g-file since after 22...g4 23.fxc4 fxc4 24.Rg1! the g-pawn can't be defended and Black's K is in trouble. 24...Nf6 25.Nxc4 Nxc4 26.Be5] **22...Qh6?** [Black should trade queens and remove an attacking piece.] **23.Rg1?!** [This is not quite the right move order as it allows Black to defend his K-pawn. The immediate 23.fxc5 was better!] **23...Kh8** [Diagram]



[23...Bxe5! 24.fxe5 (or 24.dxe5 Bb7) 24...Kh8 and Black can defend his g-pawn.] **24.fxc5 Qg7** [24...Qxc5 25.Bf4 forces ...Qxc1 as 25...Qe7 26.Qh5+ Qh7 27.Ng6+ Kg8 28.Nxf8+ wins a whole Q!] **25.Qh5+ Kg8 26.g6 Nxe5** [Black tries to trade off pieces, but it doesn't help as he still hasn't developed his Q-side and he's effectively playing down a R & B where the battle is.] **27.dxe5 Be7 28.Bf4!** [and it's clear

that Black won't be able to maintain his blockade.] **28...Rd8 29.Bg5?** [Don't trade off pieces when you're attacking.] [29.Bh6! wins immediately. 29...Qh8 (29...Qxe5 30.g7 followed by Bf4, Qh8+ and a new Q on g8.) and Black's pieces are so poorly placed that White can easily sac material to get to the K. For instance, 30.e4 dxe4 31.Bxe4 fxe4 32.Rf2 and Black will have to give up his Q to stop g7 and Qf7#] **29...Bxg5 30.Qxg5 Bb7** [Diagram]



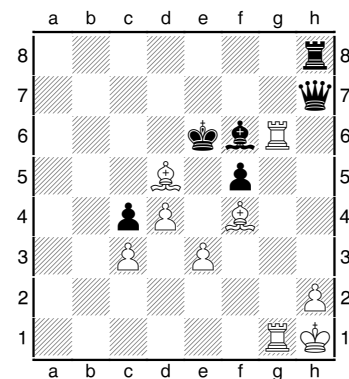
[Black finally develops his Q-side but it's too late to save the game.] **31.Bf1!** [Backwards B moves are hard to find. This one stops any Black counterplay and leaves him helpless against the march of the h-pawn!] **31...Qxe5 32.Bg2** [32.Qe7! was quicker but the text move is nice and clean. Now there's nothing to stop the advance of the h-pawn.] **32...Rd7 33.h4 Rf8 34.h5 Qf6 35.Qg3!** [Again! Don't trade pieces when you're attacking.] **35...Rg7 36.Bf3 e5 37.h6 Re7 38.g7 Kh7 39.g8Q+ Rxc8 40.Qxc8# 1-0**

**Bailey, Greg (2100) - Gregg, Alan (1992)**  
**[D00] Bird's Opening**

PHCC Online Chess Championships, Lichess.com  
 (10), 25.03.2021 [ceagl]

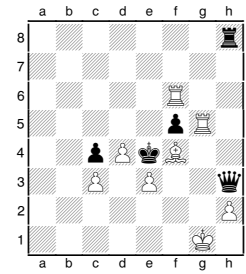
**1.f4 d5 2.Nf3 c5 3.e3 Nf6 4.d4 e6** [White's pawn setup is uncommon and I have no GM games in my DB with this position. Greg has played this opening for many years and is very familiar with the patterns that arise.] **5.c3 Nc6 6.Bd3 g6** [More common is Be7 or Be6 to avoid putting any more pawns on White.] **7.0-0 Qc7 8.Ne5 Bg7 9.Nd2 0-0 10.Qe1 c4 11.Bc2** [With the pawn structure locked, both sides will attack where they have space - Black on the q-side and White on the k-side.] **11...b5 12.a3 a5 13.Qh4?!** [White should consider completing his development before starting the attack. There's no rush, so Nxc6 followed by Nf3-e5 was preferred.] **13...Ne7 14.g4 h5!** [Moves like this, playing on the opposite side of the board from where you were, are so hard to find. Alan assesses that he's the one with more pieces and better

attacking chances on the k-side and forces White to either open the position with most of his pieces stuck on the q-side or lock the position and give Black free reign to advance on the q-side.] **15.Ndf3?!** [It's natural to try to finish your development but White needed to try to keep the position closed with h3. Now Black can force an open position with his pieces in place and White's sill stuck on the q-side.] **15...hxg4 16.Nxg4** [better was giving up a pawn with 16.Ng5 Nf5 17.Qf2 The g-pawn is weak and maybe White can corral it later.] **16...Nxg4 17.Qxg4 e5 18.Qh4 e4 19.Ng5 Re8** [Black has a substantial edge. White has no follow up after Qh7+ and his B's are nearly useless.] **20.Bd2 f6 21.Nh3 Kf7! 22.Qg3 Nf5 23.Qg2 Nh4 24.Qg3 Bxh3 25.Qxh3 Rh8 26.Qg3 Rh6 27.Bd1 Rax8 28.Rf2 Nf5 29.Qg2 Rh3 30.Re2 Nh4** [Black has done a wonderful job of improving his position without giving White time to untie his q-side, but now White is able to trade his Q for sufficient material. Better was bringing his Q into the attack. 30...Qc8 and now ...Nh4 is an unstoppable threat as the Bd2 can't defend both e3 and h4.] **31.Qxh3!?** [Forced, but also good. If the Q moves anywhere else, Black plays ...Nf3+ and White will end up losing his Q for only a R in order to avoid mate.] **31...Nf3+ 32.Qxf3 exf3 33.Rf2 Qd6 34.Bxf3** [White has been able to weather the attack and still maintain material balance. If he can activate his pieces, he should be able to maintain a draw.] **34...f5 35.Rg2 Bf6 36.Kh1 g5** [Black leverages a tactic to open the position, but since White has more pieces, it benefits him at least as much as Black.] **37.fxc5 Bxc5 38.Rag1** [38.Rxc5 Qxh2#] **38...Bf6 39.Be1 Ke6 40.Bg3 Qe7 41.Bf4** [White has done a great job of activating all of his pieces and has excellent attacking opportunities due to the weak d-pawn and Black's exposed K.] **41...b4 42.axb4 axb4 43.Rg6 bxc3 44.bxc3 Qh7 45.Bxd5+?!** [Diagram]





[45.Rh6 was a better try as after 45...Qe7 (45...Qxh6 46.Bxh6 Rxh6) 46.Rxh8 Bxh8 47.Rg6+ White can force the win of the d-pawn. But giving back the Q with 45...Qxh6! 46. Bxh6 Rxh6 should hold the draw given the opposite color Bishops.] **45...Kxd5 46.Rxf6 Ke4** [White has won a pawn, but at the expense of white square control - and that will prove to be a fatal weakness. A great example of the power of having both Bishops.] **47.Rg5?** [This position is really hard to play. White must feel like he should play for a win, but his white squares are so weak that he needs to just try to defend for a draw.] **47...Qh3!** [and just like that, White's K is powerless to prevent the material loss.] **48.Kg1** [Diagram]



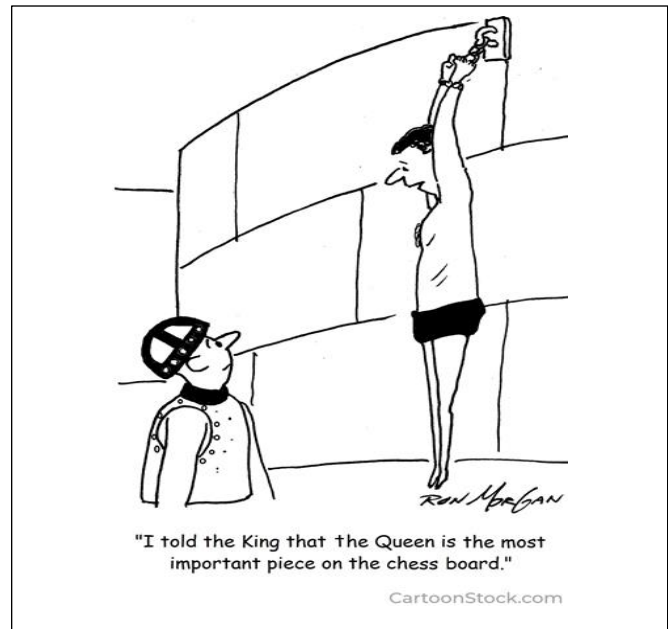
[Other moves might save the K, but Black will tie up the White pieces and then make a new Q. For instance: 48.Rfg6 Ra8 49.Rg1 Qf3+ 50.R6g2 Ra2 and the Black K is free to go to c3.] **48...Ra8 49.Rxf5 Ra1+ 50.Kf2 Qf3#** [A very instructive and entertaining game!] **0-1**

### Notes and Announcements:

- **Club Re-openings:** If your chess club is now open for over the board play (OTB), please use the email address below to contact the editor so that the re-opening can be published in the next edition. Thus far, the Port Huron CC and Grosse Point CC have officially re-opened.
- **From the Editor:** This is a rather abbreviated issue due to the obvious fact that there has been so little OTB MCA activity due to the pandemic. We hope the next issue will be able to feature more comprehensive coverage of events, games, activities, and pictures submitted by the membership.

2023 U.S. Open Championship, July 29-August 6  
 DeVos Place  
 Amway Grand Plaza Hotel  
 187 Monroe Ave. N.W.  
 Grand Rapids, MI 49503  
 (800) 253-3590  
 HR: \$144 single/double/triple/quad - Cutoff date: June 26, 2023

Lon Rutkofske, editor – *Michigan Chess Magazine* at [michessmag@gmail.com](mailto:michessmag@gmail.com)



**When you see a good move – wait - don't play it – you may find a better one!**

*Emanuel Lasker*

**It has been said that man is distinguished from animal in that he buys more books than he can read. I should like to suggest that the inclusion of a few chess books would help to make the distinction unmistakable.**

Edward Lasker

## A Hall of Fame Celebration

*In keeping with the theme of remembering the contributions of the trailblazers that cleared the path for the success of the Michigan Chess Association, I thought it especially appropriate to recognize the efforts of deceased MCA Hall of Fame members by resurrecting some of games as a reflection of their human spirit. Regardless of the outcome of the contest presented, each represents a footprint that assists us in paying tribute to their significance and value as members of our chess community.*  
– Lon Rutkofske

### James L Harkins - John David Brattin [ ] Modern Defense: Queen Pawn Fianchetto

74th US Open, Chicago, IL USA, Rd 3, Aug-14-1973

1.d4 g6 2.e4 Bg7 3.c3 d6 4.Be3 Nd7 5.Qd2 e5 6.Na3 Ne7 7.0-0-0 8.Bh6 Nc6 9.d5 Ne7 10.h4 f5 11.Bxg7 Kxg7 12.h5 f4 13.g4 g5 14.f3 h6 15.c4 a5 16.Kb1 Nc5 17.Nh3 Ng8 18.Nf2 Nf6 19.Bd3 Bd7 20.Ka1 Qe7 21.Rhg1 Rfb8 22.Qe2 Ra6 23.Bc2 Be8 24.Nd3 Nfd7 25.Nxc5 Nxc5 26.Rd2 Bd7 27.Bd1 Qe8 28.Qf1 Kf6 29.Be2 Ke7 30.Nc2 Ra7 31.Ne1 a4 32.Bd1 b5 33.Nd3 Nb3+ 34.Bxb3 axb3 35.Nc1 Rxa2+ 36.Kb1 Ra4 37.c5 dxc5 38.Nxb3 Rba8 39.Qf2 c4 40.Qc5+ Kf6 41.Nc1 Qc8 42.Ne2 Qa6 43.Nc3 Ra1+ 44.Kc2 Rxg1 45.Qxg1 b4 46.Nb1 Ba4+ 47.Kc1 Qd6 48.Re2 Bb3 49.Kd2 Ra2 50.Ke1 Ra1 51.Kd2 Qb6 52.Qxb6+ cxb6 53.Re1 Ba2 54.Kc2 b3+ 55.Kc3 Rxb1 56.Rxb1 Bxb1 57.Kxc4 Bc2 0-1

### Paul Poschel - Robert James Fischer [A19] English Opening: Anglo-Indian Defense. Flohr-Mikenas Var.

Western Open, Bay City, MI USA, Rd 4, Jul-05-1963

1.c4 Nf6 2.Nc3 e6 3.e4 c5 4.g3 Nc6 5.Bg2 d5 6.d3 dxc4 7.dxc4 Qxd1+ 8.Nxd1 Ne5 9.Ne3 Nd3+ 10.Ke2 Nxc1+ 11.Rxc1 Bd6 12.f4 e5 13.f5 Bd7 14.Nh3 Bc6 15.Nf2 Ke7 16.g4 g5 17.h4 h6 18.Bf3 b5 19.b3 b4 20.Nd5+ Bxd5 21.exd5 a5 22.hxg5 hxg5 23.Rxh8 Rxh8 24.Rh1 Ra8 25.Ne4 Nxe4 26.Bxe4 a4 27.Bc2 ½-½

### Robert James Fischer - Ronald Finegold [C15] French Defense: Winawer: Winckelmann-Riemer Gambit

Western Open, Bay City, MI USA, Rd 5, Jul-06-1963

1.e4 e6 2.d4 d5 3.Nc3 Bb4 4.a3 Bxc3+ 5.bxc3 dxe4 6.Qg4 Nf6 7.Qxg7 Rg8 8.Qh6 Rg6 9.Qe3 b6 10.Bb2 Bb7 11.O-O-O Nbd7 12.h3 Qe7 13.Ne2 O-O-O 14.c4 e5 15.dxe5 Nxe5 16.Rxd8+ Kxd8 17.Nf4 Rg8 18.Be2 Kc8 19.Rd1 Rd8 20.Rxd8+ Kxd8 21.Qg3 Ng6 22.h4 Nxf4 23.Qxf4 Ne8 24.h5 Bc8 25.h6 Qd6 26.Qg5+ Qe7 27.Qd5+ Qd6 28.Qg5+ Qe7 29.Qg3 Bf5 30.Qf4 Qe6 31.g4 Bg6 32.Qg5+ Qe7 33.Qd5+ Qd6 34.Be5 Qxd5 35.cxd5 f6 36.Bg3 Ke7 37.Kd2 Nd6 38.Ke3 b5 39.Bxd6+ Kxd6 40.Kd4 a6 41.c4 bxc4 42.Bxc4 a5 43.Ba2 f5 44.gxf5 Bxf5 45.Bb3 Bg6 46.Ba4 Bf5 47.Be8 Ke7 48.Ke5 Bg4 49.Bg6 Bd7 50.Bxh7 c5 51.dxc6 Bxc6 52.Bxe4 Bxe4 53.Kxe4 Kf6 54 .f4 1-0

### Grams,Paul - Rutkofske,Lonnie [A85] Dutch Defense Detroit-ch MI op Detroit (1), 1994

1.d4 f5 2.c4 g6 3.Nc3 Nf6 4.Nf3 Bg7 5.e3 0-0 6.Be2 c6 7.0-0 d6 8.Qc2 Na6 9.a3 Nc7 10.d5 e5 11.Rd1 e4 12.Nd4 c5 13.Ndb5 Nce8 14.Na4 Nd7 15.Rb1 Ne5 16.b4 Qg5 17.Kh1 b6 18.h3 Qh4 19.Kg1 Bh6 20.Nxa7 Rxa7 21.Nxb6 Nf6 22.Nxc8 Rxc8 23.b5 f4 24.Bf1 f3 25.g3 Qg5 26.a4 Re7 27.a5 Nh5 28.Kh2 Qf5 29.b6 Qd7 30.b7 Nf7 31.a6 Re5 32.bxc8Q+ Qxc8 33.a7 Qf5 34.a8Q+ 1-0

### Rutkofske,Lonnie (1930) - Steen,Harold [A36] Symmetrical English

1991 Michigan MX-Class A Flint (1), 26.01.1991

1.g3 g6 2.Bg2 Bg7 3.c4 c5 4.Nc3 Nf6 5.e4 Nc6 6.d3 0-0 7.Nge2 d6 8.0-0 e5 9.h3 Nd4 10.Nxd4 cxd4 11.Ne2 Nd7 12.f4 f5 13.exf5 Rxf5 14.b4 a5 15.Qb3 Kh8 16.Bd2 axb4 17.Bxb4 Nc5 18.Bxc5 dxc5 19.Rab1 Rb8 20.Qa3 b6 21.Qa7 Be6 22.g4 Rf7 23.Qa6 Bc8 24.Qb5 Bb7 25.Rbe1 Qc7 26.Bxb7 Qxb7 27.Ng3 exf4 28.Re8+ Rxe8 29.Qxe8+ Rf8 30.Qe4 Qb8 31.Ne2 Be5 32.Qf3 g5 33.Ng3 Qa8 34.Rf2 Qxf3 35.Rxf3 Re8 36.Ne4 h6 37.Kg2 Ra8 38.Rf2 Ra3 39.Rd2 Kg7 40.Kf3 Kg6 41.Nf2 h5 42.Ke4 Bf6 43.Re2 h4 44.Rb2 Bd8 45.Re2 Ra8 46.Kf3 Ra7 47.Ne4 Re7 48.Rb2 Re6 49.Rb5 Bc7 50.Rb2 Re5 51.Rb5 Kf7 52.Rb3 Ke6 53.Rb2 Bd8 54.Re2 Kd7 55.Rb2 Kc6 56.Rb5 Re6 57.Rb2 Kb7 58.Nxc5+ 1-0

For club updates or new club listings, please contact Samantha Shaffer at [shaffer1022@gmail.com](mailto:shaffer1022@gmail.com). Club information must be confirmed yearly to remain active on the MCA Club listing page. Clubs will also be listed on the MCA website ([www.michess.org](http://www.michess.org))

**Contact your club to see when it will resume meeting!**

**Big Rapids Chess Club – Thurs 5-7:00 pm.;** Big Rapids Community Library; 426 South Michigan Avenue, Big Rapids Michigan 49307. Clifton Franklund, 231-349-3256, [cliftonfranklund@ferris.edu](mailto:cliftonfranklund@ferris.edu); Webstie: <https://bigrapidschess.com>

**Cultivate Chess Club – Wed: 6:00-11:00pm.;** Bring clocks for Blitz; Cultivate Coffee and Tap House; 307 N. River St., Ypsilanti, MI 48198. Justin Meek, 734-619-9433; [justinmeek81@gmail.com](mailto:justinmeek81@gmail.com)

**Dearborn, Ford Chess Club – Tue: 5:00-9:00pm.;** Ford Motor Co World Headquarters Cafe, 1 American Road, Dearborn MI 48126; North Entrance (far rear of building opposite Michigan Ave), Westbound side of Michigan Ave, just East of Southfield Fwy; Sign in at Security Desk upon entry. After 6pm doors locked so use phone located on left wall to gain entrance or call (313) 323-1133 or (313) 407-1989. ALL ARE WELCOME, no cost/fees! Contact: Norm Haygood (248) 366-0954 (H) or (313) 407-1989 (C); [nhaygoodjr@aol.com](mailto:nhaygoodjr@aol.com) or Larry Castleberry (313) 549-5259 - [lcastleb@ford.com](mailto:lcastleb@ford.com)

**Detroit City Chess Club – Fri: 4:00-8:00pm.;** Detroit Institute of Arts (DIA), 5200 Woodward Ave., Detroit, MI 48202; e-mail: [detroitchess@gmail.com](mailto:detroitchess@gmail.com) Phone: 888-888-8141 <http://www.detroitchessclub.com>

**Flint Chess Academy - 1<sup>st</sup> & 3<sup>rd</sup> Sat: 3:00-5:30pm.;** Flint Public Library, 1026 E. Kearsley St, Flint, MI 48502; Check the Library website calendar to confirm dates: <http://www.fpl.info/>; Eric Earnest, 810-210-0517 / 810-965-6794; e-mail: [ericearnest@yahoo.com](mailto:ericearnest@yahoo.com)

**Flint, Genesee County Chess Club – Tue: 6:30-9:30pm.;** Eastside Senior Citizens Center Activity Room, 3065 N. Genesee Rd; Flint, MI 48506; Jeff Aldrich (810) 955-7271, e-mail: [jeffchess64@gmail.com](mailto:jeffchess64@gmail.com)

**Grand Rapids Chess Club -** <http://www.grandrapidschesscenter.org> Michael Brooks, G.R.C.C. Director; [michaelforwinterpromise@gmail.com](mailto:michaelforwinterpromise@gmail.com) Phone: 616-334-0220 (best by text)

**Grosse Pointe Chess Club – Wed: 6:00-8:00pm.;** Mandell Chess Club; 21539 Harper Ave.; St. Clair Shores, MI 48080; Tim Kuhn - 313.451.1071; e-mail: [timckuhn53@gmail.com](mailto:timckuhn53@gmail.com) - for more info check out "Grosse Pointe Chess" on Facebook.

**Jackson Chess Club – Thu: 7:00-12:00pm.;** Cottage Inn Pizza, 1208 W Michigan Ave, Jackson MI 49202; James Stockham email: [jimio73@comcast.net](mailto:jimio73@comcast.net); 517-395-4704

**Knights of the Square Table – Fri: 7:00-10:00 pm.;** Rough Draft/Hillsdale, MI, 42 Union St., Hillsdale, MI 49242; (To stay updated, join our public chess group on Facebook, Knights of the Square Table.) ; Hannah Stewart, (269)-275-9527, email: [hrstewart16@gmail.com](mailto:hrstewart16@gmail.com)

**Lansing Chess Club – Wed: 6:00-10:00pm.;** Room #312, 422 North Washington Square, Lansing MI 48933; Tony Nichols e-mail: [sensie48910@yahoo.com](mailto:sensie48910@yahoo.com); 517-763-6756.

**Linden Chess Club – Tues: 5:45-8:30 pm.;** Linde Faith Recreational Rm. 4518 Silver Lk Rd., Linden, MI 48451; Gus Samanigo [oc203998@gmail.com](mailto:oc203998@gmail.com); 810-923-3847 Website: [www.facebook.com/LindenChessClub/](http://www.facebook.com/LindenChessClub/)

**Livingston County Chess Club – Mon: 6:00-9:00pm.;** Hartland Senior Center, 9525 E. Highland Rd (M-59), Howell, MI 48843, ¼-mile west of US-23; Mike Nikitin 810-599-6770; Website: <http://www.livingstoncountychessclub.blogspot.com/> Email: [livingstoncountychessclub@hotmail.com](mailto:livingstoncountychessclub@hotmail.com)

**Novi Chess Club – Thu: 6:30-8:00pm.;** Novi Public Library, 45255 W 10 Mile Rd. Novi, MI 48375 -1<sup>st</sup> floor kids activity rm. – Bring boards & pieces; Sundar Rajan; [chess.novi@gmail.com](mailto:chess.novi@gmail.com)

**Oakland County Chess Club – 6:00 PM, every 6 weeks or so ;** Central United Methodist Church, 3882 Highland Rd. (Near M59 & Pontiac Lake Rd.) Waterford MI 48328, schedule of meetings can be found on facebook: [facebook.com/oaklandcountychessclub](http://facebook.com/oaklandcountychessclub), Contact Matt Berg, 248-576-7754, [bergles@yahoo.com](mailto:bergles@yahoo.com)

**Okemos Chess Club – Thu: 3-5:00pm.;** Okemos H.S. ; 2800 Jolly Rd, Okemos, MI 48864; Contact: Chandan Aralikatti; 517-775-0401; [chand4ara@gmail.com](mailto:chand4ara@gmail.com)

**Plymouth Library Chess Club - 2<sup>nd</sup> & 4<sup>th</sup> Thu: 3:30 -5:30pm.;** Plymouth District Library, 223 S. Main St., Plymouth, MI 48170. Casual games and light refreshments served; Tim Sherman : email: [tsherman@plymouthlibrary.org](mailto:tsherman@plymouthlibrary.org); Phone: 734-453-0750. Website: [plymouthlibrary.org](http://plymouthlibrary.org)

**Port Huron Chess Club – Thu: 6:30-10:00pm.;** (except holidays); Palmer Park Recreation Center, 2829 Armour St, Port Huron, 48460; Lon Rutkofske (810) 388-9219 e-mail: [ishking@aol.com](mailto:ishking@aol.com); Website: <http://porthuronchessclub.yolasite.com>

**South Bend Chess Club (IN) – Thu: 7:00-10:00pm.;** Meijer Store, 5020 Grape Rd, Mishawaka, IN - 4 Miles south of State line. Grape Rd 1/4 Mile South of Douglas Rd. Roger Blaine (574) 257-9033; e-mail: [reblaine@hotmail.com](mailto:reblaine@hotmail.com)

**South Bend, Chicory Cafe Chess Club (IN.) - Mon: 6:00-9:00pm.;** Chicory Cafe, 105 E. Jefferson Blvd. at Michigan St., South Bend IN. Contact Roger Blaine, (574) 257-9033, e-mail: [zotshot@hotmail.com](mailto:zotshot@hotmail.com)

**South Haven Chess Club – Tues: 5:00-10:30pm.;** Burger King, 752 Lagrange, South Haven, MI 49090 (On Broadway US 43...south of downtown) Contact: David Carlson, (269)-637-1003; email: [dhcaow@gmail.com](mailto:dhcaow@gmail.com)

**Spencer Street Chess Club – Most Tues: 6:30-9:00pm.;** 214 Spencer St. NE, Grand Rapids, MI; (We are a thriving chess club offering casual or rated play with players of all strengths.) Contact: Michael Brooks – [michaelforwinterpromise@gmail.com](mailto:michaelforwinterpromise@gmail.com) or [www.facebook.com/spencerstchess](http://www.facebook.com/spencerstchess)

**St. Clair Chess Club – Sat: 10am.- 4:00pm.;** St. Clair Burger King - 205 Clinton Ave. – Tom Broyles 810-326-0121 ; e-mail: [tjbroyles@aol.com](mailto:tjbroyles@aol.com) ( All but major holidays/weekends.)

**Steeplechess Knights – Fridays: 3-4:30 pm.;** Tamarack District Library - 832 S. Lincoln Ave., Lakeview, MI 48850; Beginner chess lessons and mentoring available, K-12 scholastic tournaments; Everyone Welcome; Contact: Bethany Wheeler, (231)-354-6613, email: [mrspatrickwheeler@gmail.com](mailto:mrspatrickwheeler@gmail.com)

**Traverse City Chess Club – Wed. 7-10:00PM at Horizon Books and Sat. 1-5:00PM at Books a Million.;** Contact Andrew Beider 248-227-7236 for information or by email; [andybeider@gmail.com](mailto:andybeider@gmail.com)

**Troy Youth All-Star Chess Club - Sat: 3:00-5:00pm.;** Troy Community Center -3179 Livernois Rd, Troy, MI 48083. The club is open to any K-12 students who are interested in improving his/her chess skills. Come in and have fun! Club information: <http://games.groups.yahoo.com/group/TYASCC/>. Feng Zhong, [xyzf99@yahoo.com](mailto:xyzf99@yahoo.com) (248)825-6192 Chris Hauser, [chauser\\_mi@yahoo.com](mailto:chauser_mi@yahoo.com) - (313) 575-5617.

**Universal Chess Club - Mon-Sat: 12:00-6:00pm, Sun 12:00-5:00pm.;** 5101 E. 9 mile Rd., Warren, MI. 48091-(between 9 mile & Mound Rd. on north side of 9 Mile); Ed Mandell (586) 558-4790 e-mail: [allthekingsmench@aol.com](mailto:allthekingsmench@aol.com); Website: [www.allthekingsmenchess.com](http://www.allthekingsmenchess.com); All Ages/strengths welcome! Sets provided; clocks for rent. Snacks & beverages are available for purchase.

**Young Bishops Kids Chess Club – Wed: 3:15-5:45pm.;** Fresh Wind Christian Community Church - 18201 Honor Highway Interlochen, MI. (The church is right on US31/Honor Hwy.) (This chess club is operated as a Christian ministry of Fresh Wind Christian Community Church, so Biblical teachings and community service are incorporated into the meetings as well.) Eric Haan (231)-383-1180; email: [erick.r.haan@gmail.com](mailto:erick.r.haan@gmail.com) website: [www.facebook.com/YoungBishopsChessClub](http://www.facebook.com/YoungBishopsChessClub)

**Ypsilanti Chess Club - Thurs: 6-9:00pm.;** St. Marks Lutheran Church -1515 S Harris Rd. Ypsilanti, MI 48198; (Short lecture for kids on fundamental chess principles. All skill levels are welcome. Boards are provided. If you like blitz, bring a clock.) Justin Meek; 734-619-9433; [Justinmeek81@gmail.com](mailto:Justinmeek81@gmail.com)

MICHIGAN CHESS ASSOCIATION  
 JEFF ALDRICH  
 P.O. BOX 40  
 FLINT, MI 48501

NON PROFIT  
 ORGANIZATION  
 U.S. POSTAGE PAID  
 Flint, MI  
 Permit No. 39

TIME DATED MATERIAL PLEASE EXPEDITE

**Michigan's Top 100**  
 From USCF Website Rating List  
 (Regular Rated as of May 1, 2021)

Rnk	Player	Rtng	Rnk	Player	Rtng
1	GM ROGELIO ANTONIO	2574	51	ROBERT BEMBEN	1862
2	IM ATULYA SHETTY	2559	52	AYUSH DAS	1857
3	IM EDWARD SONG	2490	53	JESSE REN	1857
4	FM MARK HEIMANN	2485	54	MICHAEL D BROOKS	1854
5	IM BEN LI	2477	55	RYAN R WANG	1841
6	FM JOSHUA POSTHUMA	2418	56	ETHAN TOBY LYU	1838
7	MAURO LOPEZ	2310	57	YULE XIE	1833
8	JAMES CANTY III	2308	58	DALTON J BARKSDALE	1825
9	JUSTIN LIANG	2250	59	KAMERON WILSON	1820
10	MANIS DAVIDOVICH	2203	60	GARY T MORTON	1812
11	TIMOTHY J MCGREW	2201	61	FREDERICK H LAHR	1810
12	ERIC V FISCHVOGT	2200	62	LONNIE RUTKOSKE	1807
13	MICHAEL ZHENG	2178	63	PATRICK KIDWELL	1802
14	ANTHONY NICHOLS	2143	64	DONALD M MASON	1800
15	SURYA PARASURAMAN	2138	65	KRISHNA VENKATASUBBA	1793
16	ANDREW M SCHREMSER	2116	66	SIDDHARTH JHA	1786
17	CLARA MCGREW	2102	67	JOHN WHITWORTH	1776
18	FWM SASHA KONOVALENKO	2096	68	DANIEL GARCIA	1775
19	AKASH NARAYANAN	2085	69	LEYOU JIANG	1774
20	WILLIAM E FULLER	2079	70	RAJESH ANAND	1772
21	BRADLEY K ROGERS	2044	71	ALEXANDER BEMBEN	1765
22	DEVIN J CAMENARES	2041	72	JEFFREY GUILFOYLE	1755
23	JUSTIN L BROWN	2039	73	ALAN ZHENG	1744
24	KAMERON TOLLIVER	2029	74	ALEX STROBEHN	1734
25	GJERGJ DODAJ	2028	75	TOM A MANION	1729
26	MANMOHAN DAS	2019	76	ADAM PARADA	1711
27	JAMES H SAWASKI	2017	77	LARRANCE XING	1711
28	JOHN R DREXEL	2012	78	KIRK MCCOLLINS	1689
29	MORGAN EVERETT	2000	79	BRANDON EELBODE	1682
30	BRONSON GENTRY	2000	80	JOSHUA CARL MUIR	1676
31	ADHVAITH RAJANISH	1999	81	ALEX BARON GUO	1673
32	BENJAMIN JAY BRANDT	1995	82	MICHAEL R ALDRICH	1668
33	AIDEN SONG	1959	83	ALEX KONG	1661
34	DANIEL SAJKOWSKI	1956	84	DAUT YAKUPOV	1657
35	HUSO AVDIC	1942	85	TIMOTHY KUHN	1656
36	STANLEY J JAROSZ	1923	86	ARJUN BAJAJ	1655
37	JEFF R ALDRICH	1921	87	KALMAN VANDERHOEK	1654
38	JONATHAN SILVERSTEIN	1917	88	CHRISTOPHER MORABITO	1644
39	NICK SCHWERIN	1913	89	JEFFREY BROADMAN	1642
40	MATTHEW TRUJILLO	1911	90	ABHINAV RAJANISH	1640
41	CHARISSE WOODS	1905	91	CHARLIE REESE	1631
42	NATHAN J OUYANG	1902	92	JAMES G TRACZ	1614
43	BRELEN WILKES	1891	93	MICHAEL THOMAS	1606
44	JAMES DEAN	1890	94	ADHRIT BHARATH	1605
45	WILL BROOKS	1888	95	JOHN B THURMAN	1600
46	HUNTER REED	1888	96	SCOTT FAUST	1600
47	DANIEL MOTOC	1887	97	MULAN ZHANG	1598
48	ZACHARY SMITH	1885	98	MARCUS ZHENG	1597
49	MIKE MEI	1874	99	ABDURRAHMA BAYI	1587
50	BRYAN WILSON	1865	100	ASHRITH MATHIYAZHAGAN	1581

## Current Michigan Champions

2020 Michigan Open	Canceled due to Covid-19 Pandemic
2020 Michigan Open Reserve	Canceled due to Covid-19 Pandemic
2020 Michigan Open Booster	Canceled due to Covid-19 Pandemic
2020 Michigan Amateur	Canceled due to Covid-19 Pandemic
2020 Master/Expert	Mark Heiman
2020 Expert Champion	Sasha Konovalenko
2020 Class A Champion	Alan Gregg, Raymond Garrison
2020 Class B Champion	Patrick Kidwell, Hunter Reed, Waleed Yassine
2020 Class C Champion	Jonathan Silverstein, Zachary Johnson,
2020 Class D Champion	Kaylan Bhaumik
2020 Class E Champion	Marcus Zheng
2020 Novice Champion	Peter Bruder
2020 Michigan Action	Canceled due to Covid-19 Pandemic
2020 Michigan Speed	Canceled due to Covid-19 Pandemic
2020 Senior Champion	Canceled due to Covid-19 Pandemic
2020 Senior Reserve Champion	Canceled due to Covid-19 Pandemic
2020 Senior Novice Champion	Canceled due to Covid-19 Pandemic
2020 Michigan Women's	Canceled due to Covid-19 Pandemic
2020 Bottom-Half Class Open	Canceled due to Covid-19 Pandemic
2020 Bottom-Half Class U1900	Canceled due to Covid-19 Pandemic
2020 Bottom-Half Class U1700	Canceled due to Covid-19 Pandemic
2020 Bottom-Half Class U1500	Canceled due to Covid-19 Pandemic
2020 Bottom-Half Class U1300	Canceled due to Covid-19 Pandemic
2020 Bottom-Half Class U900/Unr	Canceled due to Covid-19 Pandemic
2020 Primary K-3 Team	Ann Arbor King Carlsen
2020 Elementary K-5 Team Reserve	Ann Arbor Dicken, Detroit Chrysler
2020 Elementary K-6 Team	Detroit Cornerstone Blue
2020 Junior High K-9 Team	Boulan Park MS A
2020 Junior High K-9 Team Reserve	Detroit Bates Gold
2020 High School 9-12 Team	Detroit Cass Tech HS Green
2020 High School K-12 Team Reserve	U of D Jesuit A, Detroit Renaissance HS A
2020 Michigan Junior	Canceled due to Covid-19 Pandemic
2020 Michigan Young Junior	Canceled due to Covid-19 Pandemic
2020 Michigan Young Junior Reserve	Canceled due to Covid-19 Pandemic
2020 Michigan Children's	Canceled due to Covid-19 Pandemic
2020 Michigan Children's Reserve	Canceled due to Covid-19 Pandemic
2020 Michigan Young Children's	Canceled due to Covid-19 Pandemic
2020 Michigan Young Children's Reserve	Canceled due to Covid-19 Pandemic
2020 Scholastic Club K-12 Team	Canceled due to Covid-19 Pandemic
2020 Scholastic Club K-12 Individual	Canceled due to Covid-19 Pandemic
2020 Scholastic Club K-8 Team	Canceled due to Covid-19 Pandemic
2020 Scholastic Club K-8 Individual	Canceled due to Covid-19 Pandemic
2020 Scholastic Club K-5 Team	Canceled due to Covid-19 Pandemic
2020 Scholastic Club K-5 Individual	Canceled due to Covid-19 Pandemic
2020 Scholastic Club K-3 Team	Canceled due to Covid-19 Pandemic
2020 Scholastic Club K-3 Individual	Canceled due to Covid-19 Pandemic