

MICHIGAN
CHESS
ASSOCIATION



MICHIGAN CHESS

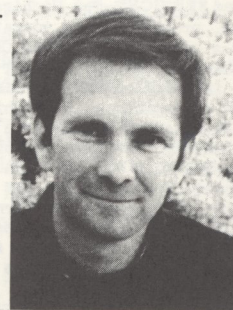
Price \$2.00

FLINT'S KEARSLEY HIGH SCHOOL TEAMS-- 1988 STATE CHAMPIONS



KNEELING: Tim Harger, Brian Miller, Marko Kosonen, Mike Hanson, James Rasmussen, Paul McKeever, Lowell Hudson.
STANDING: Robby Landon, Greg Reynolds, James Mortiere, David McAuliffe, Paul Brown, Jeff Aldrich, Keith Letourneau.

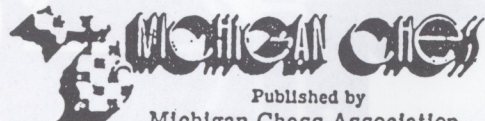
Flint's Kearsley High School doesn't have a chess team. They have a SQUAD--best in the state (maybe most states). One team won the 1988 H.S. Championship 5-0, another topped the Reserve Section 5-0 and there was enough talent left for a 3rd Kearsley team to take 6th place in the Reserve. We congratulate the teams and Coach Mike Skidmore (1987 Michigan Amateur champion) and thank him for the fine tournament report in this issue.



Coach Mike Skidmore

THIS ISSUE IS BEHIND SCHEDULE

This issue of MICHIGAN CHESS is late (very late), delayed by illness and personal problems. We apologize. The August magazine will be out early---before August! There will be no July Tournament Bulletin, since it would only repeat the info in this issue's Tournament Calendar, page 22.



Published by
Michigan Chess Association
2177 Michigan, Eaton Rapids MI 48827

BI-MONTHLY. BULLETIN ON ALTERNATE MONTHS
Phone (517) 646-6142

EDITOR V.E.Vandenburg
TOURNAMENTS David Moody
POSTAL CHESS Dr. Christine Rosenfield
PROBLEM PIC Ransom Richardson
PRODUCTION ASSISTANTS: Toshio Imai, Tom Kukla,
B. Michael Williams, Fjola Vandenburg.

MICHIGAN CHESS ASSOCIATION

Affiliated with U.S.Chess Federation

Membership, with Publications

	1 Yr.	2 Yr	3 Yr.
Adult, regular	\$12	\$22	\$32
Under 18, over 64	6	11	16

Payable to Michigan Chess Association at above address.
Foreign: add \$4 a yr. for postage

PRESIDENT

Gary Votts, 1840 Boxwood Ln, E.Lansing 48823, (517) 337-3831

VICE-PRESIDENT

Jeffrey L.Boes, 3826 New Holland Rd, Hudsonville 49426

SECRETARY

Tim Sawmiller, 24480 Riverview, Novi 48050, (313) 344-9833

TREASURER

Dan Burg, 2955 Roundtree C-3, Ypsilanti 48197, (313) 572-1335

ELECTED DIRECTORS

James Mikus, 737 Madison, Lapeer 48446

Pete Nixon, 27519 E.River, Grosse Ile 48138, (313) 676-2985

Paul Simmons, 42484 Saratoga Rd, Canton 48187

APPOINTED DIRECTORS

Vicki Dix, 1840 Boxwood Ln, East Lansing 48823

Michael Duweck, 116 S.Larch, Lansing 48912, (517) 458-8523

Wm. Groeller, 17527 Shaftsbury, Detroit, 48219, (313) 531-8356

R.J.Grzegorzcyk, 3039 Wingate Apt 2C, Grand Rapids 49508

Mike Skidmore, 5483 Kathy Dr, Flint 48506, (313) 735-6944

V.E.Vandenburg, 2177 Michigan, Eaton Rapids 48827

Printed by All-Star Printing, Lansing 48912

PURPOSE and SERVICES The Michigan Chess Association, a non-profit corporation, promotes chess education for juniors and adults by publishing a magazine, MICHIGAN CHESS and a Tournament Bulletin, each on alternate months; aiding schools and chess clubs with publicity, information and supplies; aiding local and regional chess events; and by organizing 10 Michigan championship tournaments per year: the Elementary School Team Championship, the Junior High School Team Championship, the High School Team Championship, the Michigan Junior Championship, The Michigan Amateur Championship, the Michigan Masters/Experts Championship, the Michigan Class Tournament, the Michigan Open Championship (determines over-all state champion each year), the Michigan Women's Championship, and the Michigan Speed Championship. The Michigan Chess Association has been cited by the United States Chess Federation as one of the most active chess organizations in the U.S.

ADVERTISING RATES and Copy Sizes

Back cover	7x6 1/2 inches	\$80	1/4 page	7x2 1/2 or 3x5	\$25
Page, inside	7x10 inches	\$80	1/8 page	3x2 1/2 inches	\$15
3/4 page	7x7 1/2 inches	\$62	1/16 page	3x1 1/2 inches	\$9
1/2 page	7x5 or 3x10	\$45	Minimum	3x1 inch	\$5

DEADLINE: 10th of month preceding issue for photo ready copy received with payment. Send sooner if preparation work needed (we'll quote cost).

EDGAR SNEIDERS DIES

Michigan suffered the loss of another long-time master in the death June 7 of Edgar Sneiders, 76, a Lansing resident and member of the Lansing Chess Club and MCA since 1951. He was a Patron Member and frequent donor.

He had given up over-the-board rated tournaments years ago, but always visited any in the Lansing area. He was an excellent position and problem analyst and one of the state's best blitz players. Postal chess was his special hobby, and he has had over 100 games going at times.

We join the multitude of his chess friends in expressing sympathy to his wife, Hildagard.

An article for a future issue is being prepared.

OUR THANKS TO DONORS

We acknowledge with thanks a total of \$677 contributed to the MCA Fund Drive since our May issue went to press late in March.

Topping the list was Fred Kramer's grant of \$400 to Michigan Chess through the American Chess Foundation in their ongoing program promoting chess journalism.

Following are the donors in the order received. They are helping MCA build better chess in Michigan with expanding scholastics programs, many state championship tournaments, support to other tournaments and a good magazine.

EDWARD SIMON III, moved to Lansing this year from Traverse City and has continued his Patron Membership with another donation. We appreciate it.

HAROLD WINSTON, Naperville, Ill., has continued his Patron Membership begun seven years ago. Somehow, despite a big workload increase as USCF president, he manages to read Michigan Chess and visit events in Michigan. Thanks, Harold.

STEVE KREVINKO, Plymouth, made another substantial donation. He has contributed just about every year, starting 1981. Our thanks to this long-time patron member.

DR. WILLIAM A HENKIN, Birmingham, former champion of a western state, moved to Michigan back in the early days (the good old days) of the Michigan Opens and played in a lot of them. Claims he has retired from tournaments, but our operatives learned he is playing in some special (secret?) events--and winning! Thanks for remembering MCA again.

CLIFFORD RICE, Mt. Clemens, needs no introduction--unless you've never heard of scholastic chess in Michigan. An MCA member since 1979 (at least), he helped get state scholastic chess going and did a big job in his own school. 1. Thanks for helping our Fund Drive again, Cliff.

FRED KRAMER, Mequon, Wis. Our thanks again to the former USCF president, long-time chess activist. See letter in this issue from American Chess Foundation.

RANSOM RICHARDSON, retired Flint librarian, has contributed selected chess problems to Michigan Chess for 12 years. He has donated to our Fund Drive more than once and now has done it again. Thanks for all the help, Rans.

RONALD GORE, Battle Creek, is a busy insurance man but found time to send us another much needed substantial contribution, remaining a valuable Patron Member. We appreciate it.

JERZY PAJOR, Royal Oak, sends a contribution along with his senior membership every year. He is a well known old-timer in this state's chess. Thanks again, Pajor.

SYLVESTER ROBES, Farmington Hills, heads up the Detroit Metro League, which provides him with lots of chess--and work. Welcome to our Patron Membership and thanks for the help, Sylvester.

WARREN COWAN CHESS STUDY GROUP had a unique tournament in Dr.Cowan's home. Dr.William Henkin won and donated his \$30 prize to MCA in the name of the club--his second recent donation to MCA. Thanks again Bill.

U.S. ELEMENTARY IN MICHIGAN SETS NATIONAL RECORD WITH 782

Michigan has made chess history again! The National Elementary Tournament April 22-24 at the Michigan Inn in Southfield drew 782 young children from throughout the country to the biggest scholastic event ever in the U.S. Over 150 were from Michigan.

George Koltanoski delighted crowds of children and adults with programs on two afternoons and included his famous blindfold knight tour of every square on a display board without repeating, while also calling out names the audience had picked for the squares--without seeing the board. Maybe this was easy for the man who played 37 blindfold games simultaneously for a world's record in 1937, has written books, has been USCF president and has entertained countless groups throughout the years with his lectures and problem demonstrations. But it sure didn't look easy.

Harold Winston, current USCF president, visited the tournament and was impressed. He attended a meeting of the scholastic coaches, met with Michigan Chess editor "Van" and others, got suggestions and made many notes. He looks like an action president.

The big event was sponsored by Peter Nixon's Clipper Chess Club with co-sponsors MCA, USCF, Detroit Public Schools and a Ford Motor Co.Fund. There will be a report in the August Michigan Chess.

Help Is On The Way, Matt!

The Michigan Chess Association hopes it solved a what might have become a major problem for the Detroit Tigers.

A newspaper had reported that their Matt Nokes was an avid chess player but had trouble finding competition. This serious situation was aired at the last MCA board meeting and got prompt action.

They voted him a subscription to MICHIGAN CHESS. Tim Sawmiller, MCA secretary, notified him of the humanitarian action, saying "This will provide you with some enjoyable reading on those long, dreary road trips. It also lists all upcoming chess tournaments. If you are still looking for competition, we would like to provide it."

ON THE REMAINING PAGES

History of High School Championships	4
American Chess Foundation Letter	5
The Final Southfield Tornados	6
Trenton Quads	7
East Detroit Spring Tornado	7
Lake Leelanou Tournaments	8
Michigan Chess Club Directory	8
Richardson's Problem	9
Speelman vs. Seirawan	9
1988 High School Championships	10
Unique Event: "Beat Val Day!"	13
A Tricky Problem	13
May 14 Lansing Mini-Swiss	14
Dearborn Maples Wins Elementary Title	14
Half of Entries Won Prizes in Lansing Mini	15
New Chess Club in Grand Rapids	15
1983 Junior High School Championship	16
Fischvogt Is Grand Rapids Champ	16
New Magazine for 5-Minute Players	17
Ben Finegold makes good move	17
Postal Chess	19
Flint Has 3-County Scholastic Tournament	21
Michigan's Top 100 Rated Players	21
Chess Tournament Calendar	22
1988 Southeast Michigan Open July 2-4	23
1988 Michigan Open Championship Sept 2-5	24

A Top Lansing Area Student Also A Top Chess Player

Caleb Dailey is a top Lansing area chess player (1967)--and the top student in Bath High School. The Lansing State Journal ran photos of top 10 students in area high schools and had this on Dailey:

CALEB DAILEY Co-Valedictorian

- HONORS: National Merit Scholar, honorable mention for Michigan Mathematics Competition and National Honor Society.
- ACTIVITIES: Student Council officer, honor society officer, stage band and rated second among Michigan high school chess players.
- PARENTS: Karen and Dale Dailey, 2207 E. Howe Road, Bath.
- THE FUTURE: Caleb plans to study mechanical engineering at Princeton University in Princeton, N.J.



Michigan Chess Association PATRON MEMBERS

- Fred Cramer, Mequon, Wis.
- American Chess Foundation.
- The Rosenbergs, Holt
- Richard Barrett, Grand Rapids
- Toshio Imai, East Lansing
- Susan Eareckson, East Lansing
- The Vandenburgs, Eaton Rapids
- Harold Winston, Naperville, IL
- Marvin Rogan, Chicago
- Mark Pence, Livonia
- Robert Heritier, Grosse Pte Woods
- Robert Perkins, Walled Lake
- Edgar Sneider, Lansing
- Claude E. Williams, Mt. Morris
- Timothy Sawmiller, Novi
- Rudolf Franke, Washington MI
- Lt. Chad Hill, U.S.Navy
- E. Philip Soper, Ann Arbor
- Walter Ransom, Cadillac
- Clifford H. Rice, Mt.Clemens
- Ronald K Gore, Battle Creek
- William S. Stoddard, East Lansing
- David C. Pearson, Grand Rapids
- Edwin L. Johnson, Monroe
- Thomas A. Garvin, Niles
- Paul Simmons, Canton
- Margaret Clark, Dearborn
- The Youssefs, Ypsilanti
- Robert R. Bourne, Jr., Maple City
- Robert M. Wright, Mason
- Warren W. Cowan, Farmington Hills
- Richard Meek, Battle Creek
- Robert D. Perkins, Walled Lake
- Richard D. Higgins, South Haven
- Edward Simon III, Lansing
- Steve R. Krevinko, Plymouth
- Dr. William A.Henkin, Birmingham
- Clifford Rice, Mt. Clemens
- Sylvester R. Robes, Farmington Hills

Donors of \$25 or more (plus membership) to the MCA Fund Drive are listed for a year in Michigan chess as PATRON MEMBERS of the Michigan Chess Association. Many have contributed more than \$25 - and quite a few a lot more. Our special thanks to all for this badly needed and much appreciated help.

We urge all who can do it to contribute to our Fund Drive. Merely mail check marked "Donation" to MCA, 2177 Michigan, Eaton Rapids MI 48827. It's tax deductible.

Michigan Chess History

STATE'S HIGH SCHOOL CHESS CHAMPIONSHIPS STARTED IN 1974

By Mike Skidmore

There have been 13 Michigan High School Chess Championships, and Detroit Cass Tech has won five of the last seven. The tournament's history can be divided into BC (Before Cass) and AD (After Detroit). Chuck Noll's Pittsburg Steelers, Casey Stengel's Yankees and Cliff Rice and the Cass Tech Technicians. The challenge of battling Cass Tech helps make our high school championship a premier event in our state chess calendar. But the tradition of fine scholastic chess goes back to 1974.

In November of 1974 Monroe coach Rich Sanborn helped host the first championship at Monroe Community College.

The tourney organizer/director list reads like a who's who of Michigan chess for the 1970s. J.D. Brattin (the great bear), Doris Thacker, Charles Bassin, Gary Kitts (our current president), and Jim Marfia (the Marf) helped launch the event.

Prior to 1974 the Continental Chess Association had run some scholastic tournaments and awarded trophies. But with the state association sanctioning the contest, this was the real thing. A five round event with a four board team vs team format like the Olympiad was inaugurated.

8 Teams Entered!

Eight high schools competed and Birmingham Seaholm took first with a perfect 5-0 record. Jim Waner's Flint Powers squad finished second. Ian Mailing and Duffey Hepner led Seaholm on boards 1 and 2 with 9 1/2 out of 10 points. Jon Barber and Bart Rasor also played for Seaholm. Ray Manning, Tom George, Mike Hooper and Dan Hall (5-0) played for Powers.

No championship was played in 1975 as the tournament was rotated into the winter months and scheduled for January 1976 to coincide with the conclusion of newly formed leagues in the out-state area.

While Detroit's chess programs rested on their laurels the balance of chess power moved North and West.

In 1976 16 teams battled for the crown at Powers High School in Flint. Kearsley High School won all five rounds. Duane Scott, Tony Dorohov, Mark Jones and Don Scott played for coach Tom Montague. Louie Baze of Napoleon (current Michigan Open Champion) lost the first board prize to Frank Straub on tiebreaks. Detroit Cooley finished second.

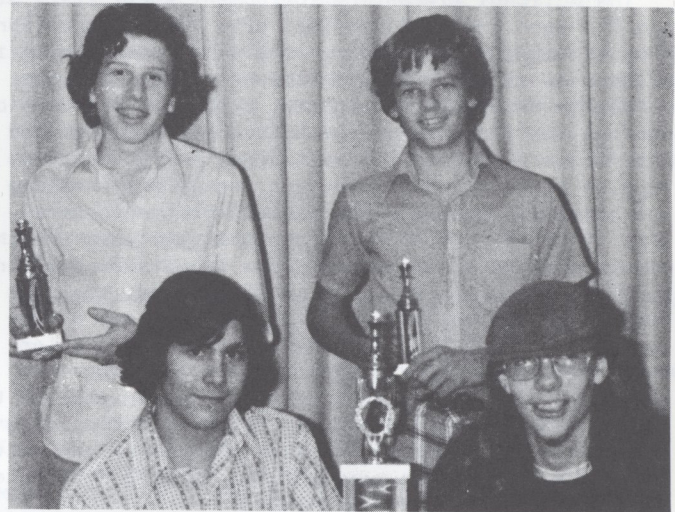
U.P. Team Won in 1977!

In 1977 Escanaba took the third championship with a 4 1/2 total. The Eskimos won in the final round over Birmingham Seaholm. Frank Necci, Mike Cuneo, Steve Sprague, and Dale Pasino played for Escanaba. This was the first foray for Stu Ouwinga's team and it helped make the tournament a true state wide event. In no other state chess event is the Upper Peninsula so well represented. Bay City Central was runner up.

In 1978 Flint Central was crowned champion after one of the closest battles ever. Kearsley beat Escanaba. Then Gwinn defeated Kearsley. Central had already beaten Gwinn and drew with Kearsley and Escanaba to win the title. Steve Vasas, Cheyenne Mason, Darrell Cliff, and Robert Ortega won for Central. Wally Meyer (Bay City), David Hahn (Saginaw) (thanks P.Kuehn), and Mark Jones (Kearsley) had 5-0 board scores. 20 teams played.

In 1979 Randy Zandstra, Bernie Galloup, Ted Smorch, and Bill Nicolai of Kearsley won the state

THE FIRST HIGH SCHOOL CHAMPIONS



These Birmingham Seaholm players won the first Michigan High School Team Championship when the event started in Monroe in 1974. TOP, l-r: Duffy Hepner, Ian Mailing; FRONT: Bart Rasor, Jon Barber. Photo by Tom Feeny in January, 1975, Michigan Chess.

championship. Birch Run coach Frank Schiepek hosted the event.

25 Teams in 1979

Kearsley went 4 1/2 - 1/2. Mason and Holt were 1/2 point back and Kearsley played them both. There were 25 teams. Paul Rosenberg, Karsten Dierksen, Tom Szczypka all scored five points on board one. Charles Alday (Galesburg) and Bill Nicolai sported perfect scores on lower boards.

In 1980 Kearsley was back. The team scored 18 of 20 points for a record total against a record 31 teams. Randy Zandstra (5-0), Ted Smorch (5-0), Scott Bain and Bill Nicolai won for Kearsley. Fordson finished second with Mike George winning all his games. Other perfect scores were by Laura Romeo (Bd 1), Dan Goldberg (Bd 2), James Adolphis (Bd 2), Joe Contreras (Bd 2), Mike McAllister (Bd 4), and Karl Clark (Bd 4), (not the Cass Karl).

In 1981 Cass Tech scored 4-1 to claim their first crown. The champions lost to Fordson in the final round, but a loss and draw earlier kept Paul Simmons' team a 1/2 point back. Cass was powered by Frank Lamar, Roger Quan, John Wygrecki, and Damon Spann. Fordson was led by Nasar Bedoun, Charles Schultz, Dominic Taddei, and Robert Hendricks. Birch Run and Detroit Holy Redeemer also had 3 1/2 pts. 18 teams competed at Dearborn's Ten Eyck Center.

Escanaba Ties Top in 1982

1982 saw a tie at 4 1/2 - 1/2 between Cass and Escanaba. They met in round four and their match was drawn but the Technicians outscored the Eskies by 1 1/2 points. John Wygrecki, Roger Quan, Damon Spann, and David Wallace triumphed for Cass. While Jeff Meyer, Steve Norman, Todd Steinmetz, and Tod Landis finished second. Larry Sandborn (Lapeer East) had the only perfect score of the 16 schools.

12 schools competed in 1983. Flushing drew Cass in round 4 but no one else was able to hold the Technicians. Cass finished with 4 1/2 victories and their third consecutive title. Raymond Chan on board 4 was the only new player in the Cass line up. Coach Rice not being one to

HIGH SCHOOL TOURNEY HISTORY

(From preceding page)

mess with success. Fordson finished second at 4-1 while Flushing was third.

In 1984 Cass Tech made it four in a row going 5-0 for the first time. Just to emphasize their dominance, the Cass Tech B squad finished second.

Hide the Tournament?

Many of the coaches suggested that perhaps we simply not tell Cass where the next championship was being held. Tony Palmer (Flushing), Kirk Johnson (Carlson), Ross Speiran (Clio), and Raymon Chan (Cass Tech) finished with perfect scores out of 24 teams.

In 1985 Lapeer East finished with 5-0 to claim the state championship for coach Jim Mikus. Kearsley was second after stopping Cass Tech in round two. Kevin Anthony, James Riseman, Ron Dawson, and Mike Bosnic carried Lapeer East. Jeff Johnson, Dan Blanchard, Don Kennedy, and Adam McDaniel were runners up. Perfect scores went to Tony Palmer (Flushing), Karl Clark (Cass Tech), Andrew Chu (Rochester Adams), and Jack Friday (Monroe Catholic). 28 teams played at Lapeer East High School.

28 teams played in 1986, and Walled Lake Central won it all. Victor Kereiman, Ed Ball, Brad Walker, and Dan Geis were coached by Jim Owens to a 4 1/2 - 1/2 total. Walled Lake defeated Monroe in the last round to claim the title. Cass Tech, Kearsley, and Monroe finished at 4-1. Karl Clark (Cass Tech), and Adam McDaniel (Kearsley) finished with 5.

Cass Wins 5th Time!

1987 saw Cass Tech capture their fifth championship with a 4 1/2 - 1/2 total. Cass was led by Karl Clark, Jerome Verdua, Bruce Johnson, and Jackie Branscum (thanks Pete Nixon). Monroe, Clio, and Monroe B all finished at 4-1. Cass drew with Monroe in the final round to clinch the title in one of the closest, most exciting championships to date. Franklin Chen (Ann Arbor Huron) was perfect on board one.

What will be the result of the 1988 championship in this our founder's centennial year? Only time will tell, but it will be a spirited contest. One you shouldn't miss!

Skidmore wrote the above article before the recent H.S. championship. His team won! Congrats, Mike.

WE RECEIVE A FRED CRAMER GRANT

American Chess Foundation

V.E. Vandenburg, Editor
Michigan Chess
2177 Michigan
Eaton Rapids, MI 48827

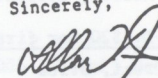
Dear Editor:

It is my pleasure to inform you that your publication is among the recipients of this year's Cramer Magazine Grants. Designed to identify and assist excellent local publications, the grants are made possible by the continuing generosity of Mr. Fred Cramer, ACF Advisory Board member, former USCF President and life-long friend of American chess.

The enclosed check is for the first half of your grant; the second half will be forwarded later this year.

Producing a local chess magazine is a difficult yet important job which makes a significant contribution to the development of the game. We are delighted to be able to help you while honoring Mr. Cramer's unsurpassed record of leadership and support of chess in the U.S.

Sincerely,



Allen Kaufman
Executive Director

This is the letter cited in donor announcements on page 2. Our thanks again to Fred Cramer and ACF.

MICHIGAN CHESS is fortunate and honored to be among chess publications receiving the above recognition from Fred Kramer and the American Chess Foundation, for they have seen them all, over all the years. We'll try to be worthy.

MICHIGAN HIGH SCHOOL CHESS CHAMPIONSHIPS

YEAR	CHAMPION	MATCH RECORD	TOTAL POINTS	COACH	#TEAMS	DIRECTOR	SITE
1974	Birmingham Seaholm	5 - 0	17.5 - 2.5		8	C. Bassin / J.D. Brattin	Monroe Community College
1976	Kearsley	5 - 0	15 - 5	T. Montague	16	J. Marfia	Flint Luke M. Powes H.S.
1977	Escanaba	4.5 - .5	15 - 5	S. Owinga	18	J. Marfia	Flint Luke M. Powers H.S.
1978	Flint Central	4 - 1	14 - 6	C. Troyer	20	M. Splane	University of Michigan Flint
1979	Kearsley	4.5 - .5	16.5 - 3.5	T. Montague	25	M. Splane	Birch Run High School
1980	Kearsley	5 - 0	18 - 2	T. Montague	31	M. Duweck / D. Burg	Flint Daly Jr. High School
1981	Cass Tech	4 - 1		C. Rice	18	M. Duweck / B. Johnson	Dearborn Ten Eyck Center
1982	Cass Tech	4.5 - .5	16 - 4	C. Rice	16	D. Burg	Brighton High School
1983	Cass Tech	4.5 - .5	16 - 4	C. Rice	12	D. Burg	Flint Luke M. Powers H.S.
1984	Cass Tech	5 - 0	16 - 4	C. Rice	24	D. Burg	Dearborn Ten Eyck Center
1985	Lapeer East	5 - 0	13 - 7	J. Mikus	28	D. Burg	Lapeer East High School
1986	Walled Lake Central	4.5 - .5	12.5 - 7.5	J. Owens	28	D. Burg	Plymouth Salem High School
1987	Cass Tech	4.5 - .5	16 - 4	C. Rice	28	J. Kulbacki	Lapeer East High School

END OF AN ERA? NO MORE SOUTHFIELD TORNADOS?

Increased site costs have checked the monthly Southfield Tornados at the Southfield Civic Center, said Joe Feldman, organizer and director. He has found a site in Ann Arbor

and is organizing some tournaments there. See Tournament Calendar at back of this issue. Here are his final three events in Southfield.

Reports by DAVID MOODY

MARCH 13

SECTION A (\$45 for first)

1 Carlton Thomas, Highland Park	2124	x	1	1	1	1	1	5
2 David Moody, Dearborn	2049	0	x	1	1	+	1	4
3 Bernard Cook, Southfield	2100	0	0	x	1	1	1	3
4 James Owens, W. Bloomfield	1986	0	0	0	x	+	+	1 1/2
5 Lineas Baze, Jackson	2166	0	-	0	-	x	1	1
6 Stan Golonka, Livonia	2055	0	0	0	+	0	x	1/2

SECTION B (\$20 for first)

1 Dale Decker, Burton	1885	x	1/2	1	1	+	1	4 1/2
2 Mark Stefanski, Flushing	1934	1/2	x	+	1	1	+	4 1/2
3 Mike Charison, Madison Heights	1753	0	-	x	+	+	1	2 1/2
4 Vincent Brattin, Belleville	1893	0	0	1/2	x	0	+	1 1/2
5 Cliff Van Loon, Pontiac	1869	-	0	-	1	x	0	1
6 David W. Calton, Southfield	1861	0	-	0	-	1	x	1

SECTION C (\$20 for first)

1 Ray Burwell, Detroit	1758	x	1	1	1/2	+	1/2	4
2 Henry Johnson, Detroit	1764	0	x	1	+	1	0	3
3 Dennis Ridella, Warren	1716	0	0	x	1/2	1	1	2 1/2
4 Bill Calton, Southfield	1778	1/2	-	1/2	x	-	1	2
5 John Blake, Detroit	1649	-	0	0	+	x	1	2
6 Chris Morrow, Detroit	1765	1/2	1	0	0	0	x	1 1/2

SECTION D (\$20 for first)

1 John Treat, Utica	1658	x	1	1	0	1	+	4
2 Ed Smith, Southfield	1703	0	x	1/2	1	1	1	3 1/2
3 Charles Collins, Harper Woods	1669	0	1/2	x	1/2	1	+	3
4 Brad Walker, Union Lake	1574	1	0	x	x	0	1	2 1/2
5 David Bloch, Davison	UNR	0	0	0	1	x	+	2
6 Terry Watson, Livonia	1660	-	0	-	0	-	x	0

SECTION E (\$20 for first)

1 Eugene Brown, Detroit	UNR	x	1	1/2	1	1	1	4 1/2
2 Aleksandra Naidovich, W. Bloom.	1433	0	x	1	1	1/2	1	3 1/2
3 Duane Williams, Detroit	UNR	1/2	0	x	1	1	1/2	3
4 Brian June, Flint	1545	0	0	0	x	1	1	2
5 Russ Navarre, W. Bloomfield	UNR	0	1/2	0	0	x	1/2	1
6 David Dunger, Northville	UNR	0	0	1/2	0	1/2	x	1

SECTION F (\$20 for first)

1 Al Giraud, Royal Oak	1334	x	0	1	1	1/2	1/2	3
2 Gary Fromm, Royal Oak	1330	1	x	0	1	0	1	3
3 Dennis White, Union Lake	1340	0	0	+	-	1	+	3
4 Don Stock, Royal Oak	1318	0	1	x	-	1	1	3
5 Bruce Lovett, Union Lake	1323	1/2	1	0	0	x	+	2 1/2
6 Robin Johnson, Detroit	1225	1/2	0	-	0	-	x	1 1/2

SECTION G (1st, \$25; 2nd, \$15)

1 David A. Calton, Southfield	1293	-1/2	W10	W6	W2	W5	4 1/2
2 Abraham Ebenstein, Southfield	UNR	W5	W4	W7	L1	W6	4
3 Shira Drissman, Farm. Hills	UNR	-1/2	L6	W9	W8	W7	3 1/2
4 Tom Rex, Fenton	1066	W9	L2	L5	W10	W8	3
5 Gary Kautz, Burton	UNR	L2	W12	W4	D7	L1	2 1/2
6 Avi Drissman, Farm. Hills	UNR	-1/2	W3	L1	W11	L2	2 1/2
7 Akur Burwell, Detroit	UNR	W12	W8	L2	D5	L3	2 1/2
8 Kenneth Raupp, Westland	UNR	W11	L7	W12	L3	L4	2
9 Sarah Raupp, Westland	859	L4	D11	L3	W12	L10	1 1/2
10 Talya Drissman, Farm. Hills	UNR	-1/2	L1	L11	L4	W9	1 1/2
11 Christine Raupp, Westland	UNR	L8	D9	W10	L6	L12	1 1/2
12 Nneka Dorsey, Detroit	UNR	L7	L5	L8	L9	W11	1

This 48 player event was plagued by withdrawals and, of all things, car trouble. Well, when you go out to eat and your car conks out, it's hard to get back in time with the tight one-day playing schedule. That's the situation that helped to create the unique quadruple tie in section F.

However, when three section winners out of six get free points along the way, there is definitely a problem. In open tournaments, withdrawals don't hurt that much; in sectional events such as Southfield, quads, or mini-Swiss, they can be decisive. Solutions, anyone?

A few games follow. First, Carlton Thomas clinches first with this decisive round 5 game:

THOMAS--MOODY: 1 e4 e5 2 Nf3 Nc6 3 Bb5 a6 4 Bxc6 dxc6 5 Nc3 Bd6 6 h3 Ne7 7 d4 Ng6 8 dxe5 Nxe5 9 Nxe5 Bxe5 10 Qxd8+ Kxd8 11 Ne2 Re8 12 f4 Bd6 13 e5 Bc5 14 Bd2 Bf5 15 OOO Ke7 16 Ng3 Be6 17 Ne4 b6? (Trying to save the pawn that would be lost after 17...Bb6 18 Bb4+, but the cure is worse than the disease.) 18 Nxc5 bxc5 19 Be3 Bd5 20 Bxc5+ Ke6 21 Rhg1 Rad8 22 g4 Bf3 23 Rdf1 Be4 24 Re1 Bf3 25 Rg3 Kd5 26 b4 Be4 27 c4+ 1-0 (A piece goes. Some battle; Black was never in the game.)

The co-winner of section B wins a painful one:

STEFANSKI--BRATTIN: 1 e4 c6 2 Nc3 d5 3 Nf3 dxe4 4 Nxe4 Bf5?! (Automatic play, which falls right into a trap.) 5 Ng3 Bg6 6 h4 h6 7 Ne5! (The point is that White's omission of d4 has given him the extra tempo to play this move with the Black QN not being on d7.) Bh7 8 Qh5 g6 9 Bc4 e6 10 Qe2 Qe7 (11 Nxf7 was threatened.) 11 d4 Bg7 12 a4 Nf6 13 b3 Nbd7 14 Ba3 c5 15 dxc5 Nxe5 16 c6! Qc7 17 cxb7 Rd8 18 Bb5+ Nfd7 19 Rd1 Qxb7 20 Ne4 Bf8? (Admittedly, he must lose material, but there's no need for it to be the king! 20...Qa8 seems to be the only move that doesn't lose the queen.) 21 Nf6#!

APRIL 10

SECTION A (1st, \$45)

1 Dexter Thompson, Detroit	2173	x	1/2	1	1	1	1	4 1/2
2 DuWayne Riggins, Detroit	2105	1/2	x	1	1	1	+	4 1/2
3 David Moody, Dearborn	2049	0	0	x	1	1	1	3
4 James Owens, West Bloomfield	1986	0	0	0	x	1	1	2
5 Cliff Van Loon, Pontiac	1867	0	0	0	0	x	1	1
6 Dale Decker, Burton	1885	0	-	0	0	0	x	0

SECTION B (1st, \$20)

1 David W. Calton, Southfield	1861	x	1	1/2	1	0	1	3 1/2
2 Walter Almquist, Redford	1857	0	x	1/2	1	1	1	3 1/2
3 Bill Calton, Southfield	1778	1/2	1/2	x	1	1/2	1/2	3
4 Frank Dmuchowski, Westland	1850	0	0	0	x	1	1	2
5 Harold Steen, Detroit	1810	1	0	0	0	x	0	1 1/2
6 Henry Johnson, Detroit	1764	0	0	1/2	0	1	x	1 1/2

SECTION C (1st, \$20)

1 Fred Lahr, Ferndale	1748	x	1	1	0	1	1	4
2 Edward Smith, Southfield	1703	0	x	1	1	1	0	3
3 Raymond Burwell, Detroit	1758	0	0	x	1	1	1	3
4 Tom Boldrick, Grosse Ile	1634	1	0	0	x	0	1	2
5 Michael Charison, Madison Hts	1753	0	0	0	1	x	1	2
6 John Treat, Utica	1658	0	1	0	0	0	x	1

SECTION D (1st, \$20)

1 Brad Walker, Union Lake	1574	x	1	1	0	1	1	4
2 Brian June, Flint	1545	0	x	1/2	1	1	1	3 1/2
3 Steve Rosenberg, Canton	1604	0	1/2	x	1	1	1	3 1/2
4 Azziem Mohammed, Detroit	1480	1	0	0	x	1	1	3
5 Joseph Pavlovich, Ypsilanti	1501	0	0	0	0	x	1	1
6 Aleksandra Naidovich, W. Bloom.	1433	0	0	0	0	0	x	0

SECTION E (1st, \$25)

1 Harvey Moore, Royal Oak	1301	W6	L2	W7	W4	W5	4
2 Hassan Mohammed, Detroit	1272	D4	W1	D5	W3	D8	3 1/2
3 Paul Sieradzki, Union Lake	1339	W5	W7	D4	L2	W6	3 1/2
4 Allen Giraud, Royal Oak	1350	D2	W8	D3	L1	W7	3
5 Gary Kautz, Flint	UNR	L3	W6	D2	W8	L1	2 1/2
6 Tom Rex, Fenton	1066	L1	L5	W8	W7	L3	2
7 Akur Burwell, Detroit	UNR	W8	L3	L1	L6	L4	1
8 Jeff Frisner, Fowlerville	1329	L7	L4	L6	L5	D2	1 1/2

Another 32 players for Joe Feldman and his Southfield extravaganza. The top section featured one of the most exciting finishes I've seen for sometime. With Riggins getting a proverbial win on forfeit, Thompson had to defeat Van Loon to tie for first. Dexter was down the whole game but

Continued on next page

SOUTHFIELD TORNADOS

(From preceding page)

fought back into an utterly drawn R+P vs. R+P ending, with no passed pawns. Van Loon offered several draws, all refused, then, with about 10 extra minutes on his clock in sudden death, somehow walked into mate.

That exemplified a hard-fought day; no perfect scores, and only three players of 32 went home undefeated.

All of you who think the way to hold Dexter Thompson is to trade queens quickly, take heed:

THOMPSON--DACKER: 1 e4 d6 2 d4 Nf6 3 Nc3 g6 4 f4 Bg7
 5 Nf3 O0 6 e5 dxe5 7 dxe5 Qxd1+ 8 Kxd1 Rd8+ 9 Ke1 Nd5
 10 Nxd5 Rxd5 11 Bc4 Rd8 12 Ng5 e6 13 Be3 c6 14 Kf2 b5
 15 Rad1 Rxd1 16 Rxd1 bxc4 17 Rd8+ Bf8 18 Rxc8 Kg7 19 Rc7
 Na6 20 Rxf7+ Kg8 21 Rxa7 Rxa7 22 Bxa7 Bc5+ 23 Bxc5 Nxc5
 24 Ke3 i6 25 Ne4 Na4 26 b3 Nb6 27 Kd4 cxb3 28 cxb3 Nd5
 29 g3 Nc4 30 a4 Kf7 31 Ke5 Nc2 32 a5 1-0

MAY 8

SECTION A (1st, \$45)

1 Carlton Thomas, Highland Park	2120	x	1	1	1	1	1	5
2 Dexter Thompson, Detroit	2241	0	x	1	1	1	+	4
3 Lirias Baze, Jackson	2159	0	0	x	1	1	+	3
4 David Moody, Dearborn	2071	0	0	0	x	1	1	2
5 Dairen Braak, Dearborn	1908	0	0	0	0	x	1	1
6 Bruce Robison, Lansing	2059	0	-	-	0	0	x	0

SECTION B (1st, \$20)

1 Frank Dmuchowski, Westland	1850	x	0	1	1	1	1	4
2 Paul DeRooij, Ann Arbor	1871	1	x	1	0	0	+	3
3 Olaf Haakonstad, Ann Arbor	1862	0	0	x	1	1	1	3
4 Dennis Ridella, Warren	1849	0	1	0	x	1/2	+	2 1/2
5 Henry Johnson, Detroit	1831	0	1	0	1/2	x	+	2 1/2
6 Alex McNeilly, Lincoln Park	1780	0	-	0	-	-	x	0

SECTION C (1st, \$20; 2nd, \$10)

1 Fernando Peak, Highland Park	UNR	W	7	W	6	W	3	W	9	W	4	5
2 Steve Rosenberg, Canton	1655	D10	L	4	W	7	W	8	W	3	3 1/2	
3 Aleksandra Naidovich, W.Bloom	1534	W11	W	9	L	1	W	6	L	2	3	
4 Edward Smith, Southfield	1703	-1/2	W	2	L	6	W10	L	1	2 1/2		
5 John Suess, Toledo, OH	1321	L	9	L11	BYE	W	7	D10	2 1/2			
6 Charles Collins, Harper Woods	1774	W	8	L	1	W	4	L	3	---	2	
7 Harvey Moore, Royal Oak	1274	L	1	BYE	L	2	L	5	W11	2		
8 Stacy Keil, Southfield	1426	L	6	W10	L	9	L	2	BYE	2		
9 Ronald Wheeler, Belleville	1531	W	5	L	3	W	8	L	1	---	2	
10 John Haley, Warren	1412	D	2	L	8	W11	L	4	D	5	2	
11 Paul Sieradzki, Union Lake	1322	L	3	W	5	L10	BYE	L	7	2		

The last Southfield Tornado (yes, another site gone down the drain, though Joe Feldman is moving his operation to Ann Arbor) had a disappointing turnout of but 23 players. Well, there must have been a lot of happy mothers about.

Section A was led by Dexter Thompson (recently awarded his Life Master certificate), but he fell victim to a bad opening against Carlton Thomas. Carlton went on to his second 5-0 result in three months at Southfield; he must be sorry to see Joe leave. Here's an attractive win:

THOMAS--ROBISON: 1 e4 e6 2 d4 d5 3 Nc3 Bb4 4 e5 c5 5 a3
 Bac3+ 6 bxc3 Qc7 7 Nf3 Bd7 8 Be2 Ba4 9 dxc5 Qxc5 10 Bd2
 Ne7 11 O0 O0 12 Bd3 h6 13 Nh4 Bb5 14 Qh5 Bxd3 15 cxd3
 Kh7 16 Rfe1 d4 17 c4 Nbc6 18 Re4 Ng6 19 f4 b5 20 f5
 Nxb4 21 Rxb4 Rh8 22 Qxf7 Nxe5 23 Rxb6#

TRENTON QUADS

MARCH 20

SECTION 1 (1st, \$10)

1 David Moody, Dearborn	2049	x	1	+	0	2
2 Dairen Braak, Dearborn	1908	0	x	1	1	2
3 Vincent Brattin, Belleville	1893	-	0	x	1	1
4 Richard Lees, Melvindale	2051	1	0	0	x	1

SECTION 2 (1st, \$10)

1 Robert Bembem, Dearborn	1861	x	1/2	1	+	2 1/2
2 David Burris, Saginaw	1826	1/2	x	+	1	2 1/2
3 Alex McNeilly, Lincoln Park	1759	0	-	x	1	1
4 Christopher Morrow, Detroit	1765	-	0	0	x	0

SECTION 3 (1st, \$10)

1 Jacob Swartz, Detroit	1535	x	1	1	1	3
2 Donald Ruark, Wayne	1672	0	x	1	1/2	1 1/2
3 David Watkins, Detroit	1500	0	0	x	1	1
4 Brian June, Flint	1545	0	1/2	0	x	1/2

SECTION 4 (1st, \$10)

1 Otto Baumgart, Dearborn	1412	x	1	0	1	2
2 Joseph Pavlovich, Ypsilanti	1501	0	x	1	1	2
3 Felix Serwatowski, Taylor	1397	1	0	x	+	2
4 Lee Jacobs, Belleville	1491	0	0	-	x	0

SECTION 5 (1st, \$20; 2nd, \$5)

1 Robert Milhizer, Southfield	UNR	W7	W5	W6	3
2 Arthur Stinson, Sterling Hts	1099	EYE	W8	W3	3
3 Douglas Moore, Detroit	UNR	W8	W6	L2	2
4 Tim McCormack, Ypsilanti	UNR	L6	W9	W5	2
5 Robin Johnson, Detroit	1225	W9	L1	L4	2
6 Harvey Moore, Royal Oak	1301	W4	L3	L1	1
7 Ray Brewer, Detroit	1334	L1	BYE	-	1
8 Al Giraud, Royal Oak	1334	L3	L2	D9	1/2
9 Mark Barnes, Melvindale	UNR	L5	L4	D8	1/2

Another event plagued by withdrawals. Overall, a hard-fought event with few perfect scores. Here are two of the more interesting games.

LEES--MOODY: 1 Nf3 b5! 2 c3 Bb7 3 Qb3 a6 4 a4 c6 5 e3
 Nf6 6 Be2 d6 7 d4 Nbd7 8 c4 Qc7 9 axb5 cxb5 10 Nc3 bxc4
 11 Bxc4 e6 12 Ke2! Be7 13 Bd2 O0 14 Rbc1 Rfb8 15 Qa2 d5
 16 Bd3 Qd6 17 Na4 e5 18 Nxe5 Nxe5 19 dxe5 Qxe5 20 Nb6
 Ra7 21 h3 Bd8 22 Ba5 Ba8 23 Rc8! (Box, as they don't say
 in the Informants.) Ne8! (Maybe not best, but I couldn't
 resist this further centralization of my pieces.) 24 Rxb8
 Qxb8 25 Nxa8 Bxa5 26 Qxa5 Qxb2+ 27 Kf3 Rxa8 28 Rb1 Qc3??
 (Maybe I should have saved this for Worst Move of the Year!)
 29 Qxc3 1-0

STINSON--MOORE (Section 5): 1 d4 Nf6 2 e3 e6 3 Bd3 c5
 4 c3 d5 5 Nd2 c4 6 Be2 Bd7 7 f4 Bd6 8 Ngf3 Bc6 9 Ne5
 Bxe5 10 fxe5 Ne4 11 Qf3 O0 12 O0 Qc7 13 Nxe4 dxe4
 14 Bxe4 Bxe4 15 Qxe4 Nd7 16 Rf2 Rae8 17 Qc2 Re7 18 Bd2
 Qa5 19 Raf1 Qxa2 20 Rf3 Nb6 21 Rh3 g6 22 e4 Na4 23 Bh6
 Rfe8 24 Qf2 f5 25 exf6 Rf7 26 e5 Qxb2 27 Bg7 Qxf2+
 28 Rxf2 Nb6 29 Rf4 Nd7 30 Rxb7! Rxb7 31 Rxb7+ 1-0

E. DETROIT SPRING TORNADO

APRIL 9

1 Dexter Thompson, Detroit	2173	W15	W11	W	3	D	2	3 1/2		
2 Robin Cunningham, Ann Arbor	2226	W	8	W	4	D	6	D	1	3
3 Carlton Thomas, Highland Park	2124	W18	W	7	L	1	W	6	3	
4 Lawrence Brenton, Detroit	1976	W17	L	2	W	5	W	9	3	
5 David Moody, Dearborn	2049	W20	W10	L	4	W	8	3		
6 Morgan Everett, Detroit	2080	W16	W	9	D	2	L	3	2 1/2	
7 Henry Johnson, Detroit	1764	W19	L	3	D15	W12	2 1/2			
8 Edward Smith, Southfield	1703	L	2	W17	W11	L	5	2		
9 Michael Charlson, Madison Hts	1753	W12	L	6	W18	L	4	2		
10 Dennis Ridella, Warren	1716	W13	L	5	L12	W15	2			
11 Olaf Haakonstad, Ann Arbor	1862	W14	L	1	L	8	W16	2		
12 James Burns, Highland Park	UNR	L	9	W16	W10	L	7	2		
13 Carrenza Dubose, Detroit	UNR	L10	W20	L16	W19	2				
14 Reinhard Rottner, Roseville	1384	L11	L15	W17	W20	2				
15 Charles Collins, Harper Woods	1669	L	1	W14	D	7	L10	1 1/2		
16 Jacob Swartz, Detroit	1535	L	6	L12	W13	L11	1			
17 Ray Brewer, Detroit	1426	L	4	L	8	L14	BYE	1		
18 Joe Feldman, Southfield	1540	L	3	W19	L	9	---	1		
19 John Haley, Warren	1315	L	7	L18	D20	L13	1/2			
20 John Endres, Marine City	1534	L	5	L13	D19	L14	1/2			

1st: Dexter Thompson (\$40)
 2nd: Robin Cunningham, Carlton Thomas, David Moody (\$6.67)
 A : Lawrence Brenton (\$8)
 B : Henry Johnson (\$12)
 C : Jacob Swartz, Ray Brewer (\$5)
 DEU: James Burns, Carrenza Dubose, Reinhard Rottner (\$3.33)
 Director: Bill Groeller

You don't see many Good Old Fashioned Tornadoes these days; maybe the turnout for this one shows why. (In defense of the organizers, there was some difficulties with publicity for the event.)

At any rate, the event started off like so many GOFTs in days of yore. In round 1, 10 games, no upsets. In round

Continued on next page

E. DETROIT SPRING TORNADO

(From preceding page)

2, 5 games with players having perfect scores, no upsets. Simplifies the pairings! Here's a gory example of the going goings-on:

HAAKONSTAD--THOMPSON: 1 e4 e5 2 Nf3 Nc6 3 Bb5 a6 4 Ba4 Nf6 5 O0 Be7 6 Re1 b5 7 Bb3 O0 8 c3 d5 9 exd5 e4! 10 dxc6 exf3 11 d4 fxd2 12 Bg5 h6 13 Qe2 Bd6 14 Bxf6 Qxf6 15 Nd2 Qf4 16 Nf3 Bg4 17 Kxg2 Rae8 18 Qd3 Bf5 19 Qd1 Qg4+ 20 Kh1 Rxe1+ 21 Nxe1 Qh3 22 Nf3 Be4 0-1

Round 3 saw the first cracks in the invincibility of the top players. #1 Robin Cunningham held #4 Morgan Everett to a draw, and my piece sacrifice was just a bit short against Lawrence Brenton. That left Dexter, who disposed of #3 Carlton Thomas, and went into the last round all alone at the top.

The foreordained battle of #1 and #2 was exciting:

CUNNINGHAM--THOMPSON: 1 e4 e5 2 Nf3 Nc6 3 Bb5 a6 4 Ba4 Nf6 5 O0 Be7 6 Re1 b5 7 Bb3 O0 8 h3 d6 9 c3 Na5 10 Bc2 c5 11 d4 Qc7 12 Nbd2 exd4 13 cxd4 Bd7 14 Nf1 Rac8 15 Re2 Rfe8 16 d5 g6 17 Ne3 Nh5 18 Bd3 Nf4 19 Rc2 Qb6 20 Bf1 f5 21 exf5 gxf5 22 b3 Kh8 23 Bb2 Rg8 24 Rxc8 Bxc8 25 Nxe5 Nxb3+ 26 Kh2 dxe5 27 gxh3 Bf6 28 Qe2 Qd6 29 Rc1 e4+ 30 Kh1 f4 31 Rxc8 Rxc8 32 Nf5 Qf8 33 Bxf6+ Qxf6 34 Qxe4 Rf8 35 Bd3 Qa1+ 36 Bb1 Qc3 37 Ng3 Qc7 38 d6 Qc6 39 Nf5 Re8 40 Ne7 Qb7 41 f3 Qxe4 42 fxe4 Kg7 1-2

As it turned out, this draw clinched first for Dexter, as Morgan Everett was defeated by Carlton Thomas, Thomas joining Cunningham and myself at the 3 point mark to split 2nd place. Lawrence Brenton also scored 3, but took top A instead.

Class B went to Henry Johnson on 2½, while the top DEU players (James Burns, Carrenza Dubose, Reinhard Rottner) outscored the top C's (Jacob Swartz, Ray Brewer).

CHESS WAY UP NORTH

A lot of chess life has been discovered northwest of Traverse City. The one-day, low budget tournament in Lake Leelanau drew 45 players May 21.

Bart and Sarah Shields of Maple City, about the best known and most active pair of senior tourney players in Michigan, live in the area and sponsored the event. Some wondered if many would come to a tourney in a small town way up there. Now they know!

Chris G. Renner (unrated and the U.P. young junior champion) came from Escanaba (250 miles) and tied with 4 points for the top of the 30-entry Scholastic Swiss with three Lake Leelanau players: Avery Bunek (1220), Christopher J. Schaub (1025) and Leonard D. Hanna (1225). Ratings, or the lack thereof, had little bearing on results, for about half were unrated, yet most did well in the 5-round competition. Even Mathew P. Meyer, also a local and the lowest rated in the tourney (650), scored one & a half points and is clearly on his way up.

Despite the good scholastic turnout for the above Grade 6 and under event, only one entry showed for the Grade 7-12 section, but some special matches were arranged for him.

14 adults entered the Open Quad tournament. Gregory E. Bailey (2038), now from Cheboygan and 1988 Michigan Amateur champion, tied for the top of the top section. He and Warren Raftshol (1871) of Suttons Bay each got 2 pts. A 2 point tie also topped the 2nd quad, won by Duane T. Croel (1671), Mesick, and James R. Faulkner (1495), Onaway.

David W. Troupe (1380), Mt. Pleasant, won all three in the six round Swiss that finished the quad event.

Surprised at the big turnout, Bart Shields is already organizing another for August. Watch for it!

MICHIGAN JUNIOR CHAMPIONSHIP

The Michigan Junior Championship was in Flint Mar. 19-20. The photos and some of the material was not received in time for this issue. Story will be in the August magazine.

CHESS CLUBS

For free listing of your chess club, send information to Michigan Chess, 2177 Michigan, Eaton Rapids MI 48827.

BARRY COUNTY CHESS CLUB meets 7 pm Mondays in Lakewood Junior H.S. library, 223 W. Broadway, Woodland. No smoking. Visitors welcome. Lee Foreman, pres., 4777 Barber Rd., Hastings MI 49058. (616) 948-2091.

BAY COUNTY CHESS CLUB meets at the Community Center, Bay City, 7-10 pm Mondays. President: Barry D. Talaga, 249 E. Jefferson, Bay City 49708. (517) 892-0324

BOYNE CITY CHESS CLUB meets 7 pm Mondays at the Depot Restaurant, 151 Ray St. (616) 582-2532. Info, Glen Truitt (616) 582-2838.

EAST DETROIT CHESS CLUB meets 7-10:30 Mondays in E. Detroit Rec. Center, 16,600 Stephens (9½ Mi. Rd near Gratiot). Info: Jim Kulbacki (313) 693-6610.

EAST LANSING Olde World Chess Club (Hakujin Shogi) meets 6:30 Thursdays, 211 N.A.C. Ave. Info: Toshio Inai. Call (517) 482-6083 Ext. 64, ask for Tosh.

FARMINGTON HILLS CHESS CLUB meets 7-10 pm Thursdays in Room E-2 of North Farmington High School on 13 Mile Rd between Orchard Lake Rd & Farmington Rd. Info: Sylvester Robes, (313) 661-4913.

NEW FLINT CHESS CLUB meets 6-10 pm Tuesdays in Kearsley H.S., 4302 Underhill (off Genesee Rd N. of Richfield). Info, Mike Skidmore (313) 736-6944

GAYLORD CHESS CLUB meets 7:30 pm Thursdays at Our Iaco Restaurant on I-75 at old US27. Glen Griffore (517) 732-3897.

GRAND HAVEN CHESS CLUB meets 7-11 pm Thursdays at the Grand Haven Community Center.

JACKSON CHESS CLUB meets 7 pm at Hardee's Restaurant, 126 West Ave (near bus station). James Stockham, Pres. (517) 784-2284.

LIVONIA CHESS CLUB meets 4-10 pm Sundays at the Clock Jr. restaurant, 33480 W. Seven Mile (X-Hart plaza). Information from Ray Praedel (313) 476-8215.

LANSING CHESS CLUB, 7 pm Mondays in Capitol Federal Savings Bldg., 6510 S. Cedar (½ mile N. of I-96). Pres: V.E. Vandenburg (517) 646-6142.

MARQUETTE COUNTY CHESS CLUB meets 7 pm Wednesdays at the VFW Post 3165 on Cold Street in Negaunee. Info: Phil Taskila (906) 475-9183.

MIDLAND SCH. CHESS CLUB meets @ 9 a.m. Saturdays at the Community Center, 2001 George. Oriented to students in grades K-12, a rated mini-Swiss is held the 1st Saturday of each month. Info: Ron Williams, 903 Deerfield Court, Midland 48640. Phone: (517) 835-4663.

OAK PARK CHESS CLUB meets 7:00 Thursdays at Comm. Center, 13000 O.P. Blvd (9½ Mile between Coolidge & Greenfield. Mike P. Kebrdle, pres. (313) 477-9344.

PONTIAC CHESS & CHECKER CLUB meets 7-11 pm Thursdays in Summit Mall Community Room, Elizabeth Lake Rd & Telegraph. Donald G. Rofe, pres. (313) 334-1360. Ely Anzures, treas. (313) 373-4450.

PORT HURON CHESS CLUB, 6:30 Thursdays (except holidays) in Palmer Park Rec. Center, 2829 Armour St. Sept. thru June (July & Aug. at American Legion, 6th St). Pres.: Lon Rutkofske.

SAGINAW CHESS CLUB 7 pm Mondays in YHCA, 1915 Fordney. Davo Burris (517) 790-1206.

SPRING LAKE YOUTH CHESS CLUB (Kindergarden & above) meets 3:30 Wednesdays Oct.-Apr. at S.L. Jeffers School, 14429 Leonard Rd. Joe Singerling (616) 846-5500.

TRAVERSE CITY CHESS CLUB meets 7:30-10 pm Tuesdays at Big Boy Restaurant, Front St. Info: Alex Moore, (616) 946-7403.

TRENTON CHESS CLUB, 7 p.m. Wednesdays at Haas Park Community Bldg., 72 Washington Ave. Pres: Ken Roberts, 5519 McMillan, Dearborn Hts. 48127. (313) 565-2123.

DLUGY GETS \$60,000 CHESS STUDY AWARD

The American Chess Foundation (ACF) has announced the selection of Grandmaster (GM) Maxim Dlugy of New York as the recipient of the second annual Frank P. Samford, Jr. Chess Fellowship. The Fellowship, administered by the ACF, is considered the richest and most important prize of its kind in the United States. Dlugy will receive training, study materials, opportunities for competition, and a monthly stipend; the combined value of the Fellowship therefore exceeds \$30,000 a year.

Dlugy, 22, began studying chess with famed chess teacher John W. Collins in 1978. He became a master by 1980, an International Master (IM) in 1982, and a GM in 1985. That same year, he played first board on the U.S. Student Team, represented the U.S. in the Tunis Interzonal Tournament, and became World Junior Champion. The following year, Dlugy played first board on the U.S. Olympiad team, then won the National Open. He tied for third in the 1987 U.S. Championship. Some outstanding examples of Dlugy's games appear below.

Created by the late Frank P. Samford, Jr. of Birmingham, Alabama, to identify and assist the most promising young American masters, the Fellowship is awarded every year. Monies are administered by the ACF. Each Fellowship can last for up to two years.

The first Samford Fellow to be selected was GM Joel Benjamin of Brooklyn, New York. Benjamin has been granted a second year of study and support under the program. The first Samford Fellow, Benjamin tied for first in the 1987 U.S. Championship; recently, he won a strong international tournament in St. John, New Brunswick, ahead of such famous GMs as Chernin, Lputian, Eingorn (of the Soviet Union), Suba (Rumania), Gulko (United States) and Torre (The Philippines).

5 YEARS OF SELECTED DLUGY GAMES

Ivanchuk-Dlugy, Sharjah, 1985

1. e4 c6 2. Nc3 d5 3. d4 de 4. Ne4 Nd7 5. Bc4 Ngf6 6. Ng5 e6 7. Qe2 Nb6 8. Bd3 h6 9. N5f3 c5 10. dc Bc5 11. Ne5 Nbd7 12. Ngf3 Ne5 13. Ne5 0-0 14. Bd2 Qd5 15. 0-0 Bd4 16. Nc4 b6 17. Ne3 Qh5 18. c3 Qe2 19. Be2 Bc5 20. Bf3 Rb8 21. b4 Be7 22. c4 Bb7 23. Bb7 Rb7 24. Rfd1 Ne4 25. Be1 Rc8 26. f4 Nd6 27. Rac1 Rbc7 28. Rd4 Rc6 29. Bf2 Bf6 30. Rd2 Nc4 31. Rdc2 Bb2 32. Rd1 Ne3 33. Rc6 Rc6 34. Be3 Kf8 35. Rd8 e7 36. Ra8 Rc7 37. a4 Kd6 38. Rd8 Rd7 39. Rc8 Kd5 40. Kf1 Bd4 41. Bd2 Ke4 42. Ke2 f6 43. Rc6 e5 44. fe Be5 45. h3 Rc7 0-1

Shamkovich-Dlugy, New York, 1983

1. d4 d5 2. c4 dc 3. Nf3 Nf6 4. e3 e6 5. Bc4 c5 6. 0-0 a6 7. Nc3 b5 8. Bb3 Be7 9. Qe2 cd 10. ed 0-0 11. Bg5 Nc6 12. Rad1 Bb7 13. Rfe1 Nd5 14. Nd5 Bg5 15. Nb6 Nd4! 16. Nd4 Qb6 17. Qg4 Bf6 18. Ne6 Bc8 19. Rd3 Be6 20. Re6 fe 21. Be6 Kh8 22. Rh3 Bg5 23. Bf5 Bh6 0-1

Dlugy-Pinter, Philadelphia, 1986

1. d4 Nf6 2. c4 e6 3. Nf3 d5 4. g3 dc 5. Bg2 Bd7 6. Ne5 Bc6 7. Nc6 Nc6 8. Qa4 Qd7 9. Qc4 Nd4 10. Bb7 Bb4 11. Nd2 Rb8 12. Bg2 Bd2 13. Bd2 Rb2 14. Bc3 Nc2 15. Kf1 Nd5 16. Bd5 ed 17. Qd3 Qb5 18. Bb2 Qb2 19. Rd1 0-0 20. Qd5 Qb6 21. Kg2 Nb4 22. Qc4 Re8 23. e4 Nc6 24. Rb1 Ne5 25. Rb6 Nc4 26. Rc6 Nd6 27. Rc7 Ne4 28. Re1 1-0

Spassky-Dlugy, London, 1985

1. e4 c6 2. d4 d5 3. Nc3 de 4. Ne4 Nd7 5. Nf3 Ngf6 6. Nf6 Nf6 7. h3 e6 8. Bg5 Be7 9. Bd3 0-0 10. Qe2 b6 11. 0-0-0 Bb7 12. h4 Qc7 13. Ne5 c5 14. dc Qc5 15. Bf6 Bf6 16. Nd7 Bb2 17. Kb2 Qb4 18. Kc1 Qa3 19. Kbl Qb4 20. Kc1 Qa3 21. Kbl Qb4 ½-½

Dlugy-Snyslov, New York, 1987

1. c4 e5 2. Nc3 Nf6 3. Nf3 Nc6 4. d4 ed 5. Nd4 Bc5 6. Nc2 0-0 7. e3 Nb4 8. a3 Nc2 9. Qc2 c5 10. b4 Be7 11. Bb2 c6 12. cd cd 13. Be2 a5 14. b5 Be6 15. 0-0 Rc8 16. Qa4 Nd7 17. Rfd1 Bf6 18. Rac1 Nc5 19. Qf4 Nb3 20. Rc2 Qc7 21. Qf3 d4 22. Ne4 Qc2 23. Bd3 Qb2 ½-½

Dlugy-Kerchnoi, Toronto, 1985

1. d4 Nf6 2. c4 e6 3. Nf3 b6 4. g3 Bb7 5. Bg2 Be7 6. Nc3 Ne4 7. Bd2 0-0 8. d5 f5 9. Qc2 Nd6 10. b3 Bf6 11. Rd1 Na6 12. 0-0 Nb4 13. Qb1 ed 14. Nb5! a5 15. Nd6 cd 16. Bb4? (16. Qf5±) ab 17. Nd4 Bd4 18. Rd4 Ra5 19. Bd5 Bd5 20. Rd5 Rd5 ½-½

Dlugy-Calvo, London, 1986

1. d4 e6 2. c4 Bb4 3. Bd2 Qe7 4. Nf3 Nc6 5. g3 e5 6. de Ne5 7. Ne5 Bd2 8. Qd2 Qe5 9. Nc3 Ne7 10. Bg2 h5 11. 0-0-0 Rh6 12. Qd4 Qd4 13. Rd4 d6 14. Rhd1 Nc6 15. Bc6 bc 16. c5 Ke7 17. Ne4 dc 18. Rd8 Re6 19. f3 f5 20. Nc5 Re2 21. Rg8 Kf7 22. Rdd8 Rb8 23. Rgf8 Kg6 24. Nd3 Rh2 25. Ne5 1-0

Leters-Dlugy, U.S. Championship, 1984

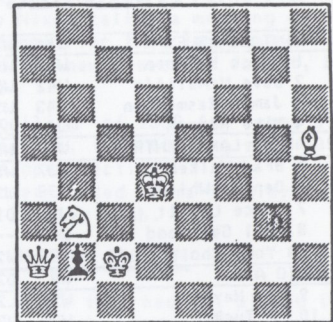
1. e4 c6 2. d4 d5 3. Nc3 de 4. Ne4 Nd7 5. Bc4 Ngf6 6. Ng5 e6 7. Qe2 Nb6 8. Bb3 c5 9. dc Bc5 10. Ng1f3 h6 11. Ne4 Ne4 12. Qe4 Nd5 13. Ne5 0-0 14. 0-0 Nf6 15. Qf3 Bd6 16. Re1 Qc7 17. Bf4 b6!! 18. Rad1 Bb7 19. Qh3 Ne4! 20. Re4 Be4 21. Nf7 Bf4 22. Qe6 Rae8 23. Qh3 Rf7 24. Rd7 Bd5! 0-1

RICHARDSON'S PROBLEM PIC

By Ransom L. Richardson

Eugene Neuhaus

1940



WHITE MATES IN TWO

Try it. Queen if you must.

Don't look now, but solution is on P.17

Jonathan SPEELMAN - Yasser SEIRAWAN

This annotated game helps show how U.S. champ Seirawan lost out in world champion candidates matches in Canada. It's reprinted from EN PASSANT, 60 page Canadian bi-monthly, 289 Olmstead St. Suite 2 Vanier, Ontario K1L 7J9. An impressive magazine.

Dutch Defence

A85/4.58

1.d4 d5 2.Nf3 c6 3.c4 e6 4.e3 f5

An unusual choice by Seirawan but, with his back to the wall, he must create chances for himself. Of course, in doing so he also creates chances for Speelman.

5.Be2 Nf6 6.O-O Bd6 7.b3 Qe7 8.Bb2 Nbd7

9.Ne5 O-O 10.Nd2 g5 11.f4 gxf4

Not a favourable transaction as White's backward e-P is eliminated while Black is never able to make use of the g-file. Needing a win, Seirawan could hardly consider blocking the position by 11... g4.

12.exf4 Ne4 13.Nxe4 fxe4 14.Qd2 Nf6 15.c5 Bc7 16.b4 Bd7 17.a4 Ne8 18.Ra3

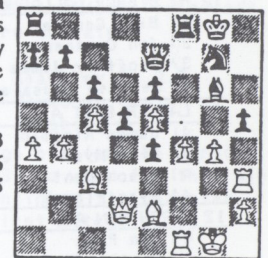
White's extra space translates into extra activity for his R. White has a large advantage.

18... Ng7 19.Rh3

Be8 20.Bc3 Bg6

21.g4 Bxe5 22.dxe5 h5

Diagram



23.f5!

This ensures that the B/c3 has a role to play in the ensuing action. If 23.gxh5 immediately, 23... Bh7 and the Black N can use the f5 outpost.

23... exf5

Black can hardly allow 24.f6.

24.gxh5 e3

24... Bh7 is now met by 25.c6!.

25.Qxe3 f4 26.Rxf4 Be4 27.e6 Nf5

27... Nxe6 28.Rg3+ Kh7 29.Rxe4 wins.

28.Rxf5! Rxf5 29.Qh6 Rg5+

Forced.

30.Rg3 Rg3+ 31.hxg3 Qh7

31... Bh7 32.Bf6 Qc7 33.Qg5+ Kf8 34.e7+ Ke8 35.h6 cleans up.

32.Qf6 Re8

Unfortunately for Black he can't put a R on f8 because of Qg5+. The battle is over.

33.Be5 Re7 34.Qg5+ Kf8 35.Bd6 1-0.

1988 MICHIGAN HIGH SCHOOL CHAMPIONSHIPS

PLYMOUTH February 20-21

OPEN SECTION

RESERVE SECTION

1 FLINT KEARSLEY A	W11	W13	W2	W7	W5	5
1 Marco Kosonen	W41	W49	W5	W25	W17	5
2 Dave McAuliffe	W42	W50	W6	D26	W18	4.5
3 James Rasmussen	W43	W51	W8	W27	D19	4.5
4 Mike Hanson	W44	D52	W8A	D28	W20	4
2 WALLED LAKE CENTRAL	W10	W5	L1	W3	W7	4
5 Brad Walker	D37	W17	L1	W9	D25	3
6 Dennis White	W38	W18	L2	L10	W26	3
7 Bruce Lovett	W39	D19	---	W11	L27	2.5
8 Phil Geelhood	W40	---	L3	D12	---	1.5
8A Yong Cho	---	W20	L4	---	W28	2
3 CLIO A	W8	D7	W9	L2	D4	3
9 Tim Hayes	W29	L25	W33	L5	L13	2
10 Ed Tucker	W30	W26	W34	W6	W14	5
11 Connie Anderson	W31	W27	W35	L7	W15	4
12 Jason Jackson	W32	L28	W36	D8	L16	2.5
4 CASS TECH	D9	W10	L7	W12	D3	3
13 Jerome Vedula	W33	W37	L25	W45	W9	4
14 Jackie Branscum	W34	L38	L26	W46	L10	2
15 Jim Mynes	L35	W39	W27	W47	L11	3
16 Elizabeth Barrios	L36	W40	L28	W48	W12	3
5 DEARBORN FORDSON A	W12	L2	W13	W9	L1	3
17 Hassan Sobh	W45	L5	W49	W33	L1	3
18 Greg Reno	D46	L6	W50	W34	L2	2.5
19 Mark Malzahn	W47	D7	W51	W35	D3	4
20 Chris White	W48	L8A	L52	W36	L4	2
6 D'RN ST. ALPHONSUS A	L7	L9	W10	W8	W11	3
21 Jerome Bowie	L25	D33	D37	W29	D41	2.5
22 Chad White	L26	L34	L38	W30	W42	2
23 Matt Preuss	L27	W35	W39	D31	W43	3.5
24 Charles Voden	L28	L36	W40	W32	W44	3
7 MONROE	W6	D3	W4	L1	L2	2.5
25 Aaron Mason	W21	W9	W13	L1	D5	3.5
26 Micky Keck	W22	L10	W14	D2	L6	2.5
27 Jeff Thomas	W23	L11	L15	L3	W7	2
28 Dallas Riddle	W24	W12	W16	D4	L8A	3.5
8 CRANBROOK A	L3	W11	D12	L6	W13	2.5
29 Chris Whitted	L9	L41	W45	L21	W49	2
30 Andy Currie	L10	W42	L46	L22	W50	2
31 Michael Whitted	L11	W43	D47	D23	D51	2.5
32 David Chung	L12	W44	D48	L24	L52	1.5
9 FLUSHING A	D4	W6	L3	L5	bye	2.5
33 Robert McAdams	L13	D21	L9	L17	bye	1.5
34 Michael Gillam	L14	W22	L10	L18	bye	2
35 Peter Leven	W15	L23	L11	L19	bye	2
35 Eric Tucker	W16	D24	L12	L20	bye	2.5
10 HW BISHOP GALLAGHER	L2	L4	L6	bye	W12	2
37 Bill Centner	D5	L13	D21	bye	W45	3
37 Jon Centner	L6	W14	W22	bye	W46	4
37 Geoffrey James	L7	L15	L23	bye	L47	1
40 Melissa Coosaia	L8	L16	L24	bye	W48	2
11 LAPEER EAST A	L1	L8	bye	W13	L6	2
41 James Riseman	L1	W29	bye	W49	D21	3.5
42 Greg Mys	L2	L30	bye	W50	L22	2
43 Jason Hunt	L3	L31	bye	W51	L23	2
41 Ryan Planck	L4	L32	bye	L52	L24	1
12 BIRCH RUN A	L5	bye	D8	L4	L10	1.5
45 Ken Post	L17	bye	L29	L13	L37	1
46 Chris Aldridge	D18	bye	W30	L14	L38	2.5
47 Greg Thomas	L19	bye	D31	L15	W39	2.5
48 Richard Warzecha	L20	bye	D32	L16	L40	1.5
13 ST. JOSEPH	bye	L1	L5	L11	L8	1
49 Keith Warmbein	bye	L1	L17	L41	L29	1
50 Ben Holt	bye	L2	L18	L42	L30	1
51 Ron Schulke	bye	L3	L19	L43	D31	1.5
52 Scott Brown	bye	D4	W20	W44	W32	4.5

1 FLINT KEARSLEY B	W10	W9	W3	W6	W4	5
1 Tim Harger	D37	W33	W9	W21	L13	3.5
2 James Mortiere	W38	W31	W10	W22	W14	5
3 Paul Brown	W39	W35	W11	L23	D15	3.5
4 Jeff Aldrich	W40	W36A	W12	D24A	W16	4.5
2 PLYMOUTH-CANTON	W11	D3	D4	D10	W6	3.5
5 Steve Rosenberg	W41	L9	W13	W37	W21	4
6 Dan Gorsich	W42	W10	L14	L38	W22	3
7 Ray Kelm	W43	W11	W15	---	D23	3.5
8 Tony Stark	WF	L12	---	L39	???	?
8A Dave Gorsich	---	---	---	W40	???	?
9 D'BPN ST ALPHONSUS B	W5	D2	L1	W7	W9	3.5
9 Anton Mikulec	W17	W5	L1	L25	W34	3
10 Steve Davanzo	W18	L6	L2	W26	W35	3
11 Giovanni Moriggi	L19	L7	L3	W27	W36	2
12 Anthony Senger	D20	W8	L4	W28	L36A	2.5
4 DEARBORN FORDSON B	W12	D6	D2	W5	L1	3
13 Mohamad Fawaz	W45	W21	L5	W17	W1	4
14 Ali El Hajj	W46	L22	W6	L18	L2	2
15 Dan Miller	W47	W23	L7	W19	D3	3.5
16 Clifford Yee	W48	L24	WF	W20	L4	3
5 FLUSHING B	L3	W11	D10	L5	W12	2.5
17 Tim Krason	L9	W41	W37	L17	W45	3
18 Chris Jacques	L10	W42	W38	W18	W46	4
19 Richard Garcia	W11	L43	L39	L19	W47	2
20 Chad Warren	D12	W44	L40	L20	W48	3.5
6 FLINT KEARSLEY C	W7	D4	W9	L1	L2	2.5
21 Greg Reynolds	L25	L13	W33	L1	L5	1
22 Brian Miller	W26	W14	L34	L2	L6	2
23 Robby Landon	W27	L15	W35	W3	D7	3.5
24 Keith Letoureau	W28	W16	---	---	W8A	3
24A Paul McKeever	---	---	W36	D4	---	1.5
7 GRAND BLANC	L6	W12	D8	L3	W10	2.5
25 Jeff Fivecoate	W21	W45	D29	W9	L37	3.5
26 Gary Chambon	L22	W46	W30	L10	W38	3
27 John Blanchard	L23	W47	D31	L11	W39	2.5
28 Jeff Dobbs	L24	L48	L32	L12	W40	1
8 LAPEER EAST B	L9	L10	D7	W12	D11	2
29 Ian Anderson	W33	L37	D25	W45	W41A	3.5
30 Jim Coulter	L34	L38	L26	W46	L41	1
31 Brian Woodruff	L35	L39	D27	W47	L44	1.5
32 Tom Patton	L36	W40	W28	W48	WF	4
9 CLIO B	W8	L1	L6	W11	L3	2
33 Lynn Hannigan	L29	L1	L21	---	---	0
34 Nick Arvin	W30	L2	W22	W41A	L9	3
35 Joe Kinney	W31	L3	L23	W42	L10	2
36 Cayle McElhiney	W32	---	L24A	WF	L11	2
36A Kyle McElhiney	---	L4	---	W44	W12	2
10 CRANBROOK B	L1	W8	D5	D2	L7	2
37 Jerry Czarniecki	D1	W29	L17	L5	W25	2.5
38 Alex Kaplan	L2	W30	L18	W6	L26	2
39 Matt Falker	L3	W31	W19	W8	L27	3
40 Sam Keros	L4	L32	W20	L8A	L28	1
11 D'BRN ST ALPHONSUS C	L2	L5	W12	L9	D8	1.5
41 Richard Preuss	L5	L17	W45	L35	W30	2
41A Bill Jaworskyj	---	---	---	L34	L29	0
42 David Zelazny	L6	L18	L46	---	---	0
43 Marcel Mikulec	L7	W19	W47	---	---	3
44 Jeff Blanton	---	L20	D48	L36A	W31	0.5
12 BIRCH RUN B	L4	L7	L11	L8	L5	0
45 Jenny Gould	L13	L25	L41	L29	L17	0
46 Chad Warzecha	L14	L26	W42	L30	L18	1
47 Erik Morse	L15	L27	L43	L31	L19	0
48 Jason Ballard	L16	W28	D44	L32	L20	1.5

BOARD PRIZES

Board 1	Marko Kosonen	Kearsley A	5-0-0
	Jerome Vedula	Cass Tech	4-1-0
Board 2	Ed Tucker	Clio A	5-0-0
	David McAuliffe	Kearsley A	4-0-1
Board 3	Jim Rasmussen	Kearsley A	4-0-1
	Mark Malzahn	Fordson A	3-0-2
Board 4	Scott Brown	St. Joseph	4-0-1
	Mike Hanson	Kearsley A	3-0-2
Alternate	Yong Cho	Walled Lake	2-0-1

BOARD PRIZES

Board 1	Steve Rosenberg	Plymouth Canton	4-1-0
	Mohamad Fawaz	Fordson B	4-1-0
Board 2	Jim Mortiere	Kearsley B	5-0-0
	Chris Jacques	Flushing B	4-1-0
Board 3	Robby Landon	Kearsley C	3-1-1
	Dan Miller	Fordson B	3-1-1
Board 4	Jeff Aldrich	Kearsley B	4-0-1
	Tom Patton	Lapeer East B	4-1-0
Alternates	Kyle McElhiney	Clio B	2-1-0
	Paul McKeever	Kearsley C	1-1-1
	Jeff Blanton	St. Al's C	1-2-1

UNDEFEATED KEARSLEY TEAMS WON BOTH SECTIONS

By Mike Skidmore

There was something new and something old in the State High School Team Championships held Feb. 20-21 at Plymouth Canton HS. The new: tournament format of 2 sections -- open and reserve. The old: Kearsley's return to the top spot.

THE OPEN SECTION

Thirteen teams, all wondering how the new format would affect their results, braved the slick roads to do battle in the first "Open" Championship. Two new schools, Cranbrook and Harper Woods Bishop Gallagher, made quality showings.

ROUND 1: Top-ranked Monroe, coming off from 2nd place finishes the last 2 years, began with a bang by shutting out Dearborn St. Alphonsus A 4-0. Meanwhile, upstart Flushing demonstrated that the defending champs, Cass Tech, might be vulnerable as the teams fought to a draw. In another "upset" (?), Walled Lake Central won big over 3rd ranked Bishop Gallagher. Kearsley, Fordson, and Clio all over-powered their opponents, as St. Joseph, with the longest drive, had the bye!

ROUND 2: In a small tournament, the matches between strong contenders come early. At table 1, Clio locked up with Monroe. Aaron Mason and Dallas Riddle each won their second game of the tourney while Ed Tucker and Connie Anderson scored for Clio.

St. Joseph didn't take advantage of their 1st round bye, falling to Kearsley 3.5-0.5. Table 3 saw the third match of the year between league rivals Dearborn Fordson and Walled Lake Central. Fordson won the first two, but WLC turned the tables in convincing fashion 3.5-0.5.

In other matches, Cass and Flushing found the winning touches. And newcomer Cranbrook won their first match in State Competition.

ROUND 3: Can you believe it? Only two teams with perfect records remain for this round: it's Walled Lake Central vs. Kearsley. Although the games all were hard-fought, the Flint players won 'em all, and shut down WLC 4-0. Kearsley has been playing great chess -- winning 11.5 out of a possible 12 points in route to its 3-0 team mark.

Table 2 saw a rematch of last year's title round, but this time Monroe downed Cass 3-1. Two Flint-area foes, Clio and Flushing, met for the third time this year, and Clio won again, this time by a 4-0 count. Both Fordson and Monroe returned to their winning ways.

Two teams scored their first match points of the tournament in this round -- St. Alphonsus edged Bishop Gallagher while Birch Run drew Cranbrook.

ROUND 4: Who will get thrown to the Kearsley machine this round? Monroe, come on, it's your turn! Marko Kosonen, Kearsley's fine foreign-exchange student from Finland, threw an attack at Aaron Mason's kingside, but Aaron didn't have enough time on his clock to work out the defense, and Marko won his fourth game. James Rasumssen also won his fourth game for Kearsley, but Dave McAuliffe and Mike Hanson were held to draws by Micky Keck and Dallas Riddle, as Kearsley won again, this time 3-1.

WLC edged out Clio at table 2, Fordson flogged Flushing, and Cass crushed Birch Run.

ROUND 5: Here we have it -- a battle of league champions. The SE Michigan Chess League champs, Fordson, will challenge the Inter-County Chess League's Kearsley. Despite strong efforts by Paul Simmon's crew, Kearsley prevailed 3.5-0.5 to wind up an impressive championship run. Look at the record! In twenty games, Mike Skidmore's team scored 16 wins and 4 draws! No losses whatsoever! The 18 points scored tied the record established in 1980 by (who else?) Kearsley. This is a feat that we'll remember for a long time. Congratulations to a great team!

Walled Lake Central finished at 4-1 to hold 2nd place, as Jim Owen's team came within one match of repeating their championship of '86. Gene Hickey's Clio team, in another

strong performance, repeated their 3rd place finish from last year.

COACHES MEETING: After the fourth round started, Scholastic Director Pete Nixon called a meeting of the chess coaches to discuss the format for this tournament. Generally, coaches liked the new 2-section format, but suggested these changes:

- (1) Establish a "ceiling" of 1300 for teams allowed in the reserve section, thus forcing some "B" teams to play in the open section.
- (2) Allow other lower-ranked teams to play "up" in the open section, if they wish.

THE RESERVE SECTION

Only "B" teams, or teams that had not played in the State Tournament for the past 2 years could enter the Reserve. Twelve teams ventured into the unknown and played in this first-time ever section.

ROUND 1:

Plymouth Canton 4	St Alphonsus C 0
Birch Run B 0	Fordson B 4
Kearsley B 3.5	Cranbrook B 0.5
Flushing B 1.5	St Alphonsus B 2.5
Kearsley C 3	Grand Blanc 1
Lapeer East 1	Clio B 3

Did you notice something strange? NO upsets! Not to worry -- that won't last...

ROUND 2:

St Alphonsus B 2	Plymouth Canton 2
Fordson B 2	Kearsley C 2
Clio B 0	Kearsley B 4

Omigosh! Only one team left at 2-0! At lower tables, Flushing B, Grand Blanc, and Cranbrook B earn their first match wins.

ROUND 3:

Kearsley B 4	St Alphonsus B 0
Plymouth Canton 2	Fordson B 2
Kearsley C 3	Clio B 1

This round saw the St. Alphonsus C team score its first match win, and Lapeer East's B team also scored, a draw against Grand Blanc.

As we left the tournament site Saturday evening, we had 4 unbeaten teams: Kearsley B was alone at the top at 3-0, while both Fordson B and Plymouth Canton were 1-0-2, and Kearsley C stood at 2-0-1. That sure must have been a fun ride home to Flint Saturday night for the Kearsley squads, knowing all three of their teams were unbeaten!

ROUND 4:

Kearsley C 1.5	Kearsley B 2.5
Cranbrook B 2	Plymouth Canton 2
Fordson B 3	Flushing B 1

Table 1 saw a K-K match. Though not for the world championship, Kearsley 'C' forced 'B' to work for that win. At other tables, the host school continued its unbeaten ways, and Lapeer East 'B' won its first match.

ROUND 5: Do you recall who played on table 1 in the last round of the open section? Well, the same two schools faced each other at table 1 of the reserve.

Kearsley B 2.5	Fordson B 1.5
Plymouth Canton 2.5	Kearsley C 1.5
St Alphonsus B 3	Clio B 1

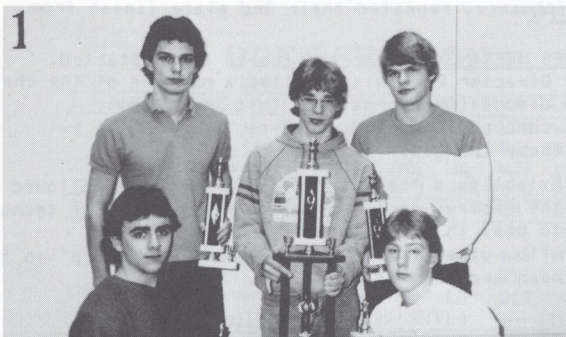
That makes it a clean sweep for Mike Skidmore's Kearsley Squads! Clearly, Kearsley is the Class of Michigan Scholastic Chess in 1988. All that hard work has paid off! Good luck in Albuquerque for the Nationals.

Not to be overlooked is the fact that another team was also without a loss -- Plymouth Canton combined 3 draws with their 2 wins to place a solid second in the reserve.

I want to thank the people at Plymouth Canton schools for hosting the tournament -- the site worked out extremely well. Special thanks to MCA president Gary Kitts and to Pete Nixon for their extra help at registration. The tournament was kept running smoothly under the capable direction of Bill Groeller and Jim Kulbacki.

TOP TEAMS IN 1988 HIGH SCHOOL CHAMPIONSHIP

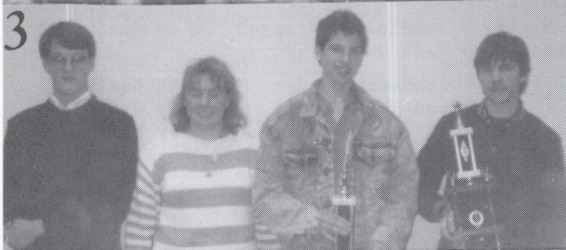
OPEN SECTION



FLINT
KEARSLEY "A"
 Top: D. McAuliffe
 L. Hudson
 M. Kosonen
 Front: M. Hanson
 J. Rasmussen



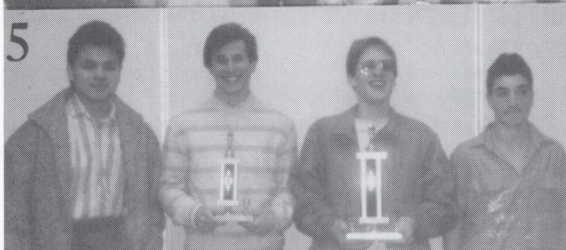
WALLEE LAKE
 V. Cho
 P. Geelhood
 B. Lovette
 D. White
 B. Walker



CLIO "A"
 J. Jackson
 C. Anderson
 E. Tucker
 T. Hayes



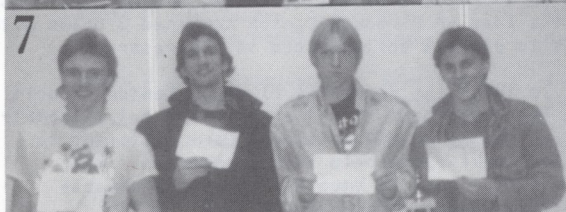
CASS TECH, Detroit
 E. Barrios
 J. Mynes
 J. Branscum
 J. Vedula



FORDSON "A", Dearborn
 C. White
 M. Malzahn
 G. Reno
 H. Sobh

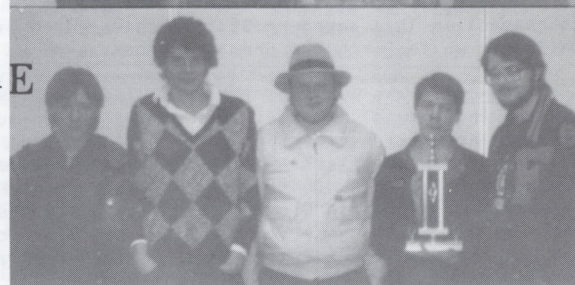


St. ALPHONSE, Dearborn
 C. Voden
 M. Preuss
 C. White
 J. Bowie



MONROE
 D. Riddle
 J. Thomas
 M. Keck
 A. Mason

RESERVE SECTION

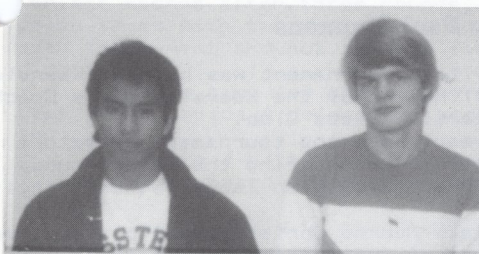


TOP TEAMS IN H.S. RESEVE SECTION

- H.S. RESERVE TEAM WINNERS
 (A) KEARSLEY "B"--J. Aldrich, P. Brown, J. Mortier, T. Harger.
 (B) PLYMOUTH-CANTON--R. Kelm, D. Gorsich, S. Rosenberg.
 (C) St. ALPHONSUS, Dearborn--A. Senger, G. Moriggi, S. Davanzo, A. Mikulec.
 (D) FORDSON--C. Yee, D. Miller, A. El Hajj, M. Fawaz.
 (E) FLUSHING "B"--C. Warren, R. Garcia, C. Jacques, T. Krason.

HIGH SCHOOL CHAMPIONSHIP BOARD WINNERS

Open Section



Top name at left

Board 1

J. Vedula
Marco Kosonen

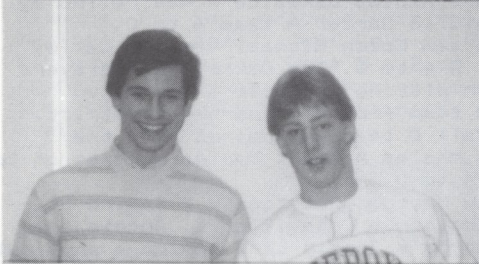
M. Fawaz
S. Rosenberg



Board 2

D. McAuliffe
E. Tucker

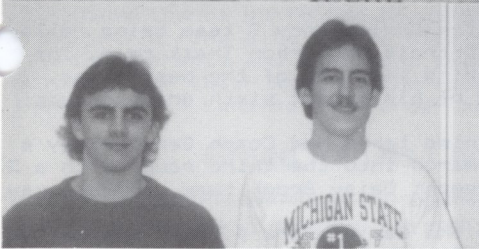
C. Jaques
J. Mortiere



Board 3

J. Rassmussen
M. Lazahn

R. Landon
D. Miller

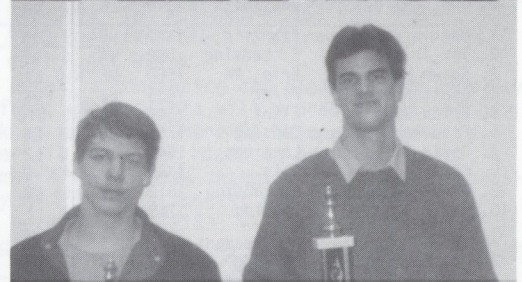


Board 4

M. M. Hansen
S. Brown

T. Patton
J. Aldrich

Reserve Section



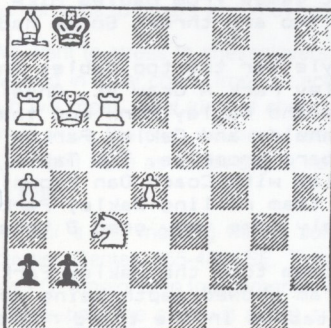
UNIQUE EVENT: "Beat Val Day"

A new type chess tournament was organized by Dr Warren W. Cowan, who assembled 10 players at his impressive Birmingham home April 21 to try it.

He called it "Beat Val Day" and offered a \$5 prize to all who beat Val Kavnatsky, his top-rated guest (2362, No. 2 in Michigan). Henkin, a retired expert did it--and also won the the tourney, a round robin with 30 minute games with \$25 for 1st place. He donated his winnings to MCA in the name of the Warren

W. Cowan Chess Study Club, which meets Monday nights at the same site..

A Koltanowski handicap formula was used: Master vs expert, pawn & move; vs Class A, pawn & 2 moves; vs. Class B., rook. Expert vs. Class A, pawn & move (etc.) Try it. You may like it.



THIS ONE IS TRICKY!

Can White mate in three moves?

It is impossible-- or is it?

See the next Michigan Chess!



SEEING DOUBLE? You'll seldom see something two former champs can't see in their game, but there it is--a double chess clock! Val Kavnatsky (left) and Bill Henkin were in a special tourney Warren W. Cowan (at right) hosted at his home. They couldn't see the reflection of their clock on the beautiful chess table from where they sat.

**A MASTER, EXPERT & CLASS 'A' TIE
AT TOP OF 30 IN LANSING MINI May 14**

By Vincent J. Brattin

			1	2	3	RC
1. David Wolf from	E. Lansing	2163	W8	W6	D2	2.5 +36
2. Robin Cunningham	Ann Arbor	2226	W9	W5	D1	2.5 +23
3. Stan Jurosz	Gr. Rapids	1998	W7	W9	D6	2.5 +46
4. Gary S hweikert	Jackson	1910	L5	W10	W9	2.0 +33
5. W. Gene Hickey	Clio	2040	W4	L2	D7	1.5 - 4
6. Frank Helle	Mt Pleasant	2070	W10	L1	D3	1.5 - 7
7. Mark Stefanski	Flushing	1909	L3	W8	D5	1.5 +12
8. VJ Brattin	Belleville	1919	L1	L7	W10	1.0 -14
9. John Schoonmaker	E. Lansing	1938	L2	L3	L4	0.0 -59
10. Joe Cummings	Jackson	1914	L6	L4	L8	0.0 -67
1. Marvin Kornhauser	Franklin	1877	W9	W7	W3	3.0 +34
2. Tom Triplett	E. Lansing	1886	W4	D6	W7	2.5 +15
3. Shawn McIntosh	Erie, PA	1660	W5	W10	L1	2.0 +33
4. Linton Jones	Flint	1635	L2	W8	W6	2.0 +42
5. Brian June	Flint	1540	L3	W9	W10	2.0 +43
6. Fred Robbins	Lansing	1769	W8	D2	L4	1.5 -10
7. David Miller	Lansing	1546	W10	L1	L2	1.0 +17
8. Connie Anderson	Clio	1580	L6	L4	W9	1.0 -11
9. Donald Winslow	E. Lansing	1612	L1	L5	L8	0.0 -67
10. David Sundeen	Lansing	1719	L7	L3	L5	0.0 -96
1. Marc Wysocki	Mt Pleasant	1196	W7	W6	W3	3.0 +97
2. Tom Hatcher	Lansing	UNR	W8	W4	W6	3.0 1827
3. Russell Navarre	W Bloomfld	UNR	W9	W7	L1	2.0 1418
4. John Haley	Warren	1412	W10	L2	W9	2.0 +35
5. Ben Bohnhorst	E. Lansing	1151	L6	D9	W8	1.5 +36
6. Floyd Furgason	Lansing	1472	W5	L1	L2	1.0 -21
7. Don Clark	Howell	UNR	L1	L3	W10	1.0 1138
8. James Stuart	Gr. Rapids	1396	L2	W10	L5	1.0 -20
9. Chris Jacques	Flushing	1309	L3	D5	L4	0.5 -47
10. E. Louis Caron	Kalamazoo	1300	L4	L8	L7	0.0 -73

PRIZES (Each section \$50-\$25-\$10)

1--Wolforn, Cunningham, Jurosz each \$28.33;
2--Kornhauser \$50, Triplett \$25; McIntosh,
Jones, June each \$3.33. 3--Wysocki, Hatcher
each \$37.50; Navarre, Haley each \$5.

Stan Jurosz (1998) -- Mark Stefanski (1909)

1. d4 Nf6 2. c4 e5 (The Budapest Defense fits well with the style of Stefanski, who, if he were not a chess player, would probably be an Indian Chief with a name like Running Blind) 3. de Ng4 4. Nf3 Nc6 5. e3 Nxe5 6. Be2 d6 7. 0-0 Bf5 8. Nc3 g6 9. Nxe5 Nxe5 10. f4 Nc6 11. e4 Bd7 12. Be3 (Having pushed Mark's developed pieces back to spectatorhood, Stan proceeds by calmly completing his development instead of opting for f5, which, while more vigorous, has more potential to backfire) 12. ... f5 13. ef Bxf5 14. Bf3 Bg7 15. c5 0-0 16. cd cd 17. Qb3+ Kh8 18. Qxb7 Nd4 19. Qxa8 Qe7 (The counterattack is no surprise, but it shouldn't be taken lightly. Stan will need a pretty level head to steer things his way from here on) 20. Nd5 Nxf3+ 21. Rxf3 Qxe3+ 22. Nxe3 Rxa8 23. Nxf5 (Three cheers for Stan's level head. The ending is clearly his) 23. ... gf 24. Rb3 Re8 25. Kf1 Bd4 26. Re1 Rc8 27. Rb7 Rc2 (If you peruse the complete game scores of Capablanca and Fischer you will find they were never checkmated. But Mark is not to be faulted for this move -- the chance that Stan will permit the check at f2 is about one in a thousand, true, but the only other feasible move was resignation, which leaves winning chances of zero in a thousand, instead.) 28. Re8++ (And this result is hardly unique -- there were five other games in this tournament that ended in checkmate, including two more in the top section!)

This next game is like one of those many 19th-century free-for-all that entertains a lot more than it instructs (such as Adolf Anderssen versus Herr Nichtskopf, where white plays without his Q-rook and black plays without thinking).

Mark Stefanski (1909) -- V.J. Brattin (1919)

1. e4 e5 2. Nc3 Bc5 3. Bc4 Nf6 4. d3 h6 5. f4 d6 6. Na4 Bxg1 7. Rxg1 Ng4 8. g3 Qd7 9. Nc3 Nxb2 10. f5! h5 11. Rh1 Ng4 12. Qxg4! hg 13. Rxh8+ Ke7 14. Nd5++

Continued on next page

**DEARBORN MAPLES WINNER AND
STILL CHAMP OF ELEMENTARY**

By Paul Simmons

The 1988 elementary team tournament was held at Kearsley High School and very well hosted by the Kearsley Chess Coach, Mike Skidmore and the Kearsley Chess Club.

This is the first year where the tournament directors looked at players' ratings before pairing the first round. Although how St. Angela A was placed on Table 10, definitely escapes me.

First table action saw Monroe Christrancy A placed there because of the high rating of Justin Link, their first board player and the only rated member of the team. They faced Grand Rapids Lakeside C. The Monroe team took the match 4 to 0. Justin Link would prove his rating was no fluck by going on to win the first board first place trophy. Christrancy teams just seem to get better each year.

On table 2 Ann Arbor Trail A, a very strong team, measured an E. Grand Rapids team, who called themselves "The Brutal Bishops" 3 1/2 to 1/2. The Ann Arbor Trail team called itself "The Four J's, since each player's name began with that letter.

On Table 3 East Grand Rapids Lakeside A was rolled by the traditionally strong Clio Carter A team 4 to 0.

Fourth table action saw Coach Michael Venia's Oakley Park A team roll Dowdall A 4 to 0. The Oakley Park players had worked hard this year playing in quite a few rated events. Dowdall is a new team from the Kearsley district.

On table 5 the Dowdall B team was paired with the defending state champion Maples A team. Maples marched on to the second round with a 4 to 0 win.

The second round saw Monroe Christiancy A facing St. Angela A. Coach Robert Centner's Roseville St. Angela team prevailed 3 to 1 with Monroe's Justin Link saving a shut out with his first board win.

Table 2 action had the Christiancy B team being rolled to 0 by the very strong Detroit Ann Arbor Trail team. The Trail was definitely looking like one of the best teams. Coach Cliff Rice had one of his finest sixth grade groups this year.

The battle on the third table had Coach Gene Hickey's fine Clio Carter A team march into the third round with a 3 to 1 victory over the Fremont Daisy Brook team, another new group.

On the fourth table the Oakley Park A team from Walled Lake continued on with a 3 to 1 victory over Edgerton. This is another new team. It is good to see team development taking place and more schools trying chess.

Down on Table 5 Dearborn Maples took Clio Carter's B team 4 to 0. Now the competition will begin to heat up in round three when the teams jockey for top table positions in the final round.

The third round began with Ann Arbor Trail facing Clio Carter A on the first table. Ann Arbor Trail took the middle boards while Clio won Boards one and four. A fine Clio player, Tony Altenritter, won a tough game from Ann Arbor Trails' very strong first board, Jason Mynes. This was one of the longest games in the third round.

Maples finally moved up to Table 2. Personally I feel that in a non-rated team event the defending state champions should be placed on first board as long as that team can stay there. Detroit Clippert A proceeded to draw the Maples team. Maples won the end boards with Clippert's Billy Cagle and Todd Hager taking long hard fought games from Maples Mike Cody and Danielle Puzio on boards two and three. So we had another draw.

Draws were definitely the style for the top tables in third round play. Table 3 saw Oakley Park A draw St. Angela A. St. Angela took the high boards and Oakley Park won the low pair. St. Angela's Ryan Hesperheide and Oakley Park's Tom Hobson would both go on to take board trophies. The Table 4 match finally saw some decisive play with Coach Dan Brown's East Grand Rapids Middle School B team rolling Oakley Park B team 4 to 0. There were definitely some very good B teams in this year's tourney.

On table 5 the St. Angela B team took the Oakley Park C team 3 to 1. The Oakley Park program showed depth being able to place three teams on the top 5 tables in the third round.

Continued on next page

DEARBORN MAPLES

(From preceding page)

In 1987 with forty teams playing there were only two perfect scores after three rounds. In 1988 there were about seven teams with two and a half points. This was a very wide open tournament and not an easy final round pairing for the directors.

Now it's time for the trophy round, Table 5 action saw East Grand Rapids A defeat the host Kearsley Armstrong team 3 to 1.

The Table 4 battle saw St. Angela A take Clippert A 3 to 1. Only first board player Dawn Jones managed to win for Clippert.

On Table 3 Clio Carter A was matched against Oakley Part A. The Walled Lake team prevailed 3 to 1. Tony Altenritter of Clio took the first board point and would finish with a perfect score for his state tournament.

Table 2 had St. Angela's B team finally run out of gas 3 1/2 to 1/2 against Detroit Ann Arbor Trail A. Ann Arbor Trail would take 3 1/2 match points for the day going into tie break for first place.

The first table saw Dearborn Maples A face the only team with a perfect score East Grand Rapids Middle B. The Maples coaches, your author and Ron Len, hid in the skittles area and played a chess game rather than watch. The first report was very bad. Then having won the skittles game against Coach Simmons, Ron Len ventured into the chess room just after Maples first board, Jeff Collier reported in with a win. Maples continued on to a 3 1/2 to 1/2 win and that half point, a stalemate with Maples down in material, would allow the Dearborn school to retain its state title. Yes, there are breaks in chess.

The 1988 top ten elementary teams are Dearborn Maples, Detroit Ann Arbor Trail, Roseville St. Angela A; Walled Lake Oakley Park A, East Grand Rapids Middle A, Birch Run A; East Grand Rapids B, Ann Arbor Emerson, Clio Carter A, and Monroe Christrancy A.

Many thanks go to the Kearsley school district for providing a fine site and to Mike Skidmore, his wife, all the Kearsley parents and assistant coaching staff, and Jenny Skidmore for their work at the food concession and for their help in keeping good order at the tourney.

Grand Rapids Chess Club

Western Michigan chessplayers will join together to revive the Grand Rapids Chess Club after a long period of dormancy. The push to organize comes from local chess promoter Glenn Good, along with MCA Vice-Pres. Jeff Boes and Executive Board member Ron Grzegorzczk. "We felt that the time was right for a chess club in GR," said Boes. "For the last few years, the chess community has been fragmented into two camps: weekend tournament players, and (mostly unrated) club players. Our tournament activities served only the first group. In addition, many chessplayers don't feel a part of either community: juniors and new players, postalites, etc. The formation of a club will give all chessplayers a common goal and service."

The club's goals will be to provide opportunities to participate in chess for everyone. One club project will be to increase the participation of GR-area schools in the state's scholastic chess program, and to provide chess instruction to children and other novices. Boes said that another high-interest item is the formation of teams to play against each other (like the Detroit Metro League) or against other cities. A continuation of the highly-successful local ladder tournament is also probable. He noted that chess instruction for medium-strength players by the stronger players is another possibility. "We also want to pass along what we've learned about organizing tournaments to others who may wish to become tournament directors," he said.

"We want to stress to chessplayers that the first meeting will be their chance to get involved in local chess from an active standpoint: for example, deciding when the club will meet, what kind of chess (rated, unrated) will be played, and the kind of atmosphere the club will have," said Good. "Those who 'wait and see' about the club won't have as much say in how the club operates as those who pitch in from the start."

The club's first meeting will be June 13 at 7:00 PM, at the Kentwood Community Activities Center, 355-48th SE. This was the site of the recent Masters/Experts and Class C championship tournaments. All area chessplayers are invited to attend. At the first meeting, the club will adopt a constitution and elect officers. No membership dues will be charged.

LANSING MINI May 14 (From preceding page)

I may have given the impression that spirited opening play can't bear fruit -- but it can, especially if you have enough rating points to back up your openings eccentricities.

Gene Hickey (2040) -- Robin Cunningham (2226)
1. d4 d5 2. e4 c6 3. f3 de 4. Nc3 Nf6 5. fe e5
6. Be3 Ng4 7. Bd2 ed 8. Nce2 Bc5 9. h3 Qh4+
10. g3 d3! (Threatening some nasty stuff. White will avoid the worst, of course, but the weakness of f2 will continue to be a source of pain and frustration, like a popcorn kernel caught in the back teeth) 11. Bg2 de 12. Nxe2 Qf6 13. Bf4 Bf2+
14. Kd2 Qd8+ 15. Kc1 Qxd1+ 16. Kxd1 Ne3+
17. Bxe3 Bxe3 (And black's extra piece carries the day) **BLACK WINS.**

Here's a convincing and pleasing win from Dave Wolfrom, whose points will probably catapult him back up to master where he belongs -- Dave is, after all, a former Michigan Junior champion, a former Michigan Open champion, and is quite possibly Michigan's strongest postal player.

Dave Wolfrom (2163) -- Frank Helle (2070)
1. c4 Nf6 2. Nf3 c5 3. Nc3 d5 4. cd Nxd5 5. e4
Nb4 6. Bc4 Nd3+ 7. Kf1 Nc6 8. Qe2 N3e5 (The knight had looked more menacing on d3 than it actually was) 9. Nxe5 Nxe5 10. Bb3 b6 11. Bd5 Rb8
12. d4 Ng6 13. h4 e6 14. h5 ed 15. hg fg
16. ed+ (All of a sudden, black's king is feeling a bit too much fresh air) 16. ... Be7 17. Bf4 Rb7
18. d6 0-0 19. Qc4+ Kh8 20. de Rxe7 21. Bg3
Ref7 22. Rd1 cd 23. Qxd4 Qg5 24. Kg1 Bb7
25. Qh4 Qxh4 26. Rxh4 g5 27. Rhd4 h5 28. Rd8
Rxd8 29. Rxd8+ Kh7 30. f3 h4 31. Bf2 h3
32. Ne4 Bxe4 33. fe Rxf2 34. Kxf2 h2 35. Rd1
BLACK RESIGNS.

To close, here's a spirited encounter from section 3:

Marc Wysocki (1196) -- Floyd Furgason (1472)
1. e4 c5 2. c3 Nc6 3. d4 cd 4. cd d6 5. d5 Ne5
6. f4 Nd7 7. Nf3 Nc5 8. Be3 Nxe4 (This knight has been wildly active here in the early going, and incautiously steps on a land-mine) 9. Qa4+
Bd7 10. Qxe4 Nf6 11. Qb4 Qc7 12. Nc3 b6
13. Rc1 Qb7 14. Bb5 Rd8 15. Bxd7+ Nxd7 16. Qb5
g6 17. Bd4 f6 18. 0-0 Bg7 19. Ng5! fg 20. Bxg7
Rg8 21. Bh6 (Again the correct move, influencing f8) 21. ... gf 22. Rxf4 Rc8 23. Rcf1 Kd8
24. Ne4 Kc7 25. Rf7 Rge8 26. Bg5 a6 27. Rc1+
Kb8 28. Rxc8+ Qxc8 29. Qc6! (Forcing a queen trade, as 29. ... Qd8 would be met with 30. Nxd6!, which would be the chessic equivalent to winning the Lotto) 29. ... Ne5 30. Qxb6+ Ka8 31. Rxe7
Rxe7 32. Bxe7 Nd3 (32. ... Qc1+ is correct, and might even have won. Now Marc plugs that last hole and coasts home) 33. Nc3 Nc5 34. Bxd6 Qe8
35. Kf1 Qc8 36. Bxc5 **BLACK RESIGNS**

April 16 Lansing Mini:

50% OF ENTRIES WON PRIZES-- FROM TOP RATED TO LOWEST

Half of the entries won prizes in the April 16 Lansing Mini-Swiss, which drew 24 to the 3-round event.

Winning \$50 each for 1st in the three sections with 3 points each were Kevin Czuhai (2226) and Ronald Grzegorzczk (1653), Grand Rapids; and Marc Wysocki (1196) Mt. Pleasant.

Splitting 2nd & 3rd prizes (\$25, \$10) in each section with 2 points for \$11.66 each were (A) Dexter Thomsson (2173) Detroit, Paul Bauerle (2035) DeWitt, and Jeff Richburg (1988) East Lansing; (C) Ken Tindall (unr.) Muskegon, Jeff Prisner (unr.) Fowlerville) and Michael J. Barancik (unr.) Mt. Morris.

The Lansing \$50/\$25 Mini-Swiss is sponsored monthly by the Lansing Chess Club. Dates are on page 22.

TOP JUNIOR H.S. TEAMS

JUNIOR H.S. BOARD WINNERS



FLINT
ARMSTRONG "A"
S. Hanson
Coach
M.Miles
J.Skidmore
E.Manor



DETROIT
CLIPPER "A"
D.Jones
C.Knox
J.Barrios
M.Kelly



LAPEER
WHITE
R.Mikus
B.ROBINSON
H.PHUNG
COACH
J.WHITE



DETROIT
ANN ARBOR
TRAIL "A"
C.HADLEY
J.MYRNES
S.WELK
D.BARGINERS



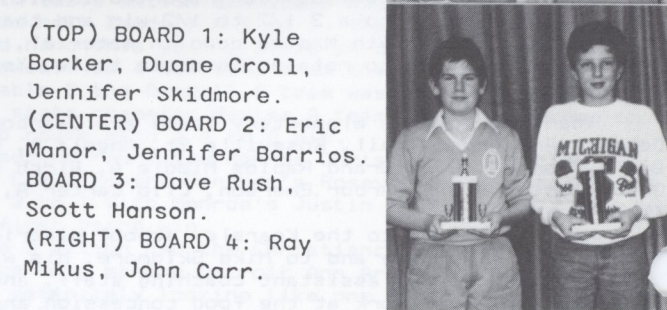
MONROE "A"
R.McCarty
W.Hiltz
L.Kusnier
M.Smith



MONROE
CANTRICK "A"
J.Carr,
R.Lingar
A.J.Winklespecht
C.Sype



ANN ARBOR
TRAIL "B"
C.Ruffing
C.Rice, coach
J.Crowe
K.Williams
J.Bowie, coach
J.Damron



(TOP) BOARD 1: Kyle Barker, Duane Croll, Jennifer Skidmore.
(CENTER) BOARD 2: Eric Manor, Jennifer Barrios.
BOARD 3: Dave Rush, Scott Hanson.
(RIGHT) BOARD 4: Ray Mikus, John Carr.

FISCHVOGT IS G.R.CHAMPION

The Grand Rapids Chess Foundation (headed by Glenn Good and Jeff Boes) sponsored our first Grand Rapids Championship, April 9-10. The Championship tournament was open to the top six GR-area players in attendance. Noticeably absent were such local powers as Jim Marfia (rumored to be in retirement) and Don Bohley (hope to see you next time, Don!). Eric Fischvogt mowed down most of the field, and coasted to victory with a last-round draw to finish at "plus three." (+3 - 0 = 2)). Eric won \$100 and a trophy, plus possession of the rotating Champion's trophy (an impressive monster about the size of a Yugo) until 1989.

In the Open section, 17 players contested for over \$225 in prizes. A strong showing by Delander Johnson set up a last-round short (but fighting) draw with Jeff Boes. They split 1st prize and 1st B money, as per USCF rules for ties involving both class and place prizes. The full list of prizewinners:

4 1/2	Jeff Boes,	1st, 1st B
	Delander Johnson	(\$50 each)
4	Mike Skidmore,	2nd (\$12.50)
	Ron Grzegorzczuk	
3	Art Moulter	1st C (\$50)
2 1/2	Thom Little,	1st D/Unr (\$25)
	Rick Meads	

In addition, we awarded prizes for Best Game in each section, and an Upset prize (won by Rick Meads for a 331-point upset). Boes and Grzegorzczuk co-directed the tournaments.

Next year's Championship is planned for February, with invitations going to the current champion, the top GR-area finisher in the 1988 Open (hey, that's me!), and four more local players based on ratings.

—Jeff Boes

FLINT'S ARMSTRONG "A" TOPS JUNIOR H.S. TOURNEY

By Peter Nixon

Junior High Teams Final Standings

The 1988 Michigan Jr. High team was held March 12 at the Clippert Middle School of Detroit. Twenty eight teams from fourteen schools participated. These are the same numbers as last year's tournament in Lapeer. We did have five new schools participating this year: Mesick, near Interlochen; Tappen, Ann Arbor; Fischer, Detroit; Haslet and Kinewa, near Lansing. We also lost five schools this year: Burton Bently, Clio Carter, Hilbert, Holt, and Lapeer Zemmer. One of these schools entered four teams last year. This same team skipped the tournament two years ago when the tournament was last held in Detroit.

1. Armstrong A	4.0	15. White B	2.0
2. Clippert A	3.5	16. Lessenger A	2.0
3. White A	3.0	17. Fischer	1.5
4. Ann Arbor Trail B	3.0	18. Cantrick B	1.5
5. Monroe A	3.0	19. St. Angela	1.5
6. Cantrick A	3.0	20. Ann Arbor Trail D	1.5
7. Ann Arbor Trail A	3.0	21. Monroe B	1.5
8. Tappan	3.0	22. Lessenger B	1.5
9. Maples A	2.5	23. Armstrong B	1.0
10. Clippert B	2.5	24. Ann Arbor Trail E	1.0
11. Ann Arbor Trail C	2.0	25. Clippert C	1.0
12. Maples B	2.0	26. Kinewa	0.5
13. Mesick	2.0	27. Haslett	0.5
14. Maples C	2.0	28. Armstrong C	0.5

Round one started with the top rated team on the wall chart not in attendance. The team was from Mesick and had to drive through a snow storm to get to the tournament. They showed up thirty minutes late and managed to squeeze by Clippert B, 3-1. On table three Ann Arbor Tappan was upset by a White A team, 0-4. Monroe B was stopped 1-3 by White B.

Round two. Cantrick A topped Mesick 3-1 on table one. The big upset of the round was White B slipping by the always solid Maples A 2.5-1.5. The other upset was on table two with Ann Arbor Trail B splitting the point with Clippert A.

Round three. Armstrong A tops Cantrick A 3-1. Ann Arbor Trail beats White B 3-1. Monroe A gets by Maples B 3-1. Clippert shuts out Cantrick B 4-0.

Round four starts with the strongest team from the Flint League, Kearsley Armstrong A, facing the winner of the Metro Scholastic Chess League, Monroe A, on board one. Board two has Ann Arbor Trail facing Clippert A. Armstrong, Monroe and Ann Arbor Trail all have perfect scores of three, Clippert has two and a half. Clippert managed to sweep Ann Arbor Trail A. On table three hot Ann Arbor Trail B drew with Maples A. Table four saw Tappan beat White B 3-1 to take the eighth place team trophy. There was a controversy on table six when one team was accused of talking amongst themselves. The team had been warned once before. The opposing team wanted the player to forfeit the game. The TD finally imposed a twenty minute time penalty.

Meanwhile back on table one, I saw queens drop on the third and fourth boards almost simultaneously. Ryan McCarty won board four for Monroe while Scott Hanser won board three for Armstrong. Eric Manor managed to win board two for Armstrong. The outcome all depended on board one with Jennifer Skidmore, from Armstrong with white, facing Mike Smith of Monroe. Mike played a waiting game and lost to Jennifer's superior attack. This placed Armstrong all alone in first place. Clippert A came in second place with three and a half. Third was a six way tie with White A, Ann Arbor Trail B, Monroe A, Cantrick A, Ann Arbor Trail A and Tappan. Maples A and Clippert B tied for ninth place.

I would like to thank our directors Jim Kulbacki and Bill Groeller for their fine job. They had some extra help from Tom Boldrick. Thanks also to all of the coaches and parents that helped make this tournament a success. Special thanks to the Clippert Chess Club for hosting this event.

Congratulations to the new champions from Kearsley.

DEXTER THOMPSON PROMOTED

Dexter Thompson, Detroit master and 1986 Michigan Open champion, has received his Life Master certificate from the USCF.

NEW MAGAZINE DEDICATED TO 5-MINUTE TOURNAMENTS

Five minute chess now has a magazine all its own, a new bi-monthly called BLITZ CHESS, edited by Walter Browne (6-time U.S. champion).

It is published by the recently orgnized World Blitz Chess Association, 8 Parnassus Rd., Berkley, Cal. 94708. Membership is \$8 per year, single copies \$1.59. Members get blitz ratings from blitz events sent in.

The Vol 1 No. 1 issue (May-June 1988) had 24 pages 7"x 8" with photogenic Mikhail Tal on the cover. He won the first world blitz (5-minute) championship in St John, Canada, in February. Alberta, Canada, will host the 2nd World Blitz in July, 1989--with \$200,000 in prizes!

The magazine gives a good round-by-round report of the St. John event, but published only three games and three diagrams. It also had 17 games (no diagrams) from U.S. blitz events last year.

BEN MAKES ANOTHER GOOD MOVE

Ben Finegold, the little Detroit area (Oak Park) juvenile Michigan genius who grew faster in chess than he did chronologically, is a now a big boy, 18 with a big rating. And he is making big moves.

In 1986 he moved to Columbus, Ohio for better competition to improve his rating, a meager 2300 or so. It worked.

Now he has moved to New York for still stronger competition. In Ohio they have only a few dozen masters, grandmasters, etc.--or is it a few hundred?

He'll do O.K. in the big city, but where will he move next? His rating is only 2426 (it has been more). Naturally, he wants to improve--maybe like a kid years ago known as Bobby.

Along the way Ben picks up lots of hundreds of real bucks in top and near-top prize money, tourney after tourney. He knows how to make good moves.

SMALEC'S LUCKY DAY?

John Smalec, Ann Arbor chess promoter, director and teacher--and good at it, was born on a July Friday the 13th. Not to worry. Birthday will be a July Wednesday this year.

1988 MICHIGAN JUNIOR HIGH SCHOOL CHAMPIONSHIP

March 12 in Clippert High School, Detroit

I	Armstrong A	1338	W25	W11	W6	W5	4.0
1.	Jennifer Skidmore	1478	W102	W42	W21	W17	4.0
2.	Eric Manor	1458	W103	W43	W22	W18	4.0
3.	Scott Hanson	1221	W104	W44	W23	W19	4.0
4.	Matt Miles	1399	W19	D7	W18	W4	3.5
II	Clippert A	1399	W19	D7	W18	W4	3.5
5.	Maria A. Kelly	1450	W77	L25	W73	W13	3.0
6.	Jennifer Barrios	1464	W78	W26	W74	W14	4.0
7.	Chad Knox	1453	W79	L27	W75	W15	3.0
8.	Dawn D. Jones	1227	W80	W28	W76	W16	4.0
III	White A	1122	W8	L4	W16	W12	3.0
9.	Jimmy White	972	W29	L13	W64	W46	3.0
10.	Hai Phung	UR	W30	L14	W65	W47	3.0
11.	Brad Robinson	1233	W31	L15	W66	W48	3.0
12.	Ray Mikus	1335	W32	W16	W67	W49	4.0
IV	Ann Arbor Trail A	1249	W17	W3	W15	L2	3.0
13.	Derrick Barginere	1274	W69	W9	W59	L5	3.0
14.	Scott Welk	1306	W70	W10	W60	L6	3.0
15.	Jason Mynes	1273	W71	W11	L61	L7	2.0
16.	Cedric Hadley	1144	W72	L12	W62	L8	2.0
V	Monroe A	1390	W14	W16	W12	L1	3.0
17.	Mike Smith	1701	W54	W64	W46	L1	3.0
18.	Louis Kusnier	1304	L55	W65	W47	L2	2.0
19.	William Hiltz	1315	W56	W66	L48	L3	2.0
20.	Ryan McCarty	1239	W57	W68	W49	W4	4.0
VI	Cantrick A	1211	W24	W13	L1	W14	3.0
21.	Chris J. Sype	1303	W98	L50	L1	W54	2.0
22.	A.J. Winklespecht	1209	W99	W51	L2	L55	2.0
23.	Ryan Lingar	1181	W100	W52	L3	W56	3.0
24.	John R. Carr	1156	W101	W53	W4	W58	4.0
VII	Ann Arbor Trail B	1231	W23	D2	W13	D9	3.0
25.	John Damron	1516	L94	W5	L50	W33	2.0
26.	Kieth Williams	1042	W95	L6	W51	W34	3.0
27.	Jeffrey Crowe	1177	W96	W7	W52	L35	3.0
28.	Christopher Ruffing	1191	W97	L8	W53	L36	2.0
VIII	Tappan	1399	L3	W17	W25	W15	3.0
29.	Kieth Weintraub	1515	L9	L69	W102	W59	2.0
30.	Jonathon Chambers	1411	L10	W70	W103	W60	3.0
31.	Jason Yaman	1430	L11	W71	W104	W61	3.0
32.	Peter Atkins	1240	L12	W72	W106	L62	2.0
IX	Maples A	1276	W20	L15	W19	D7	2.5
33.	Dawn Miller	1300	W81	L59	L77	L25	1.0
34.	Europej Izeroski	1251	W82	W60	W78	L26	3.0
35.	Jeff Collier	1195	W83	D61	W79	W27	3.5
36.	Mike F. Cody	1356	W84	L62	W80	W28	3.0
X	Clippert B	1170	L13	W24	D20	W18	2.5
37.	Shawn Hinson	1331	L50	W98	L81	W73	2.0
38.	Samuel J. Edens	1200	L51	W99	W82	W74	3.0
39.	Todd Hager	1101	L52	L100	-	W75	1.0
40.	Cornelius Fortune	1048	W53	W101	W83	W76	4.0
41.	Edward Emerson	UR	---	---	L84	---	0.0
XI	Ann Arbor Trail C	1175	W28	L1	L14	W23	2.0
42.	Damin Hewin	1199	W116	L1	L54	L94	1.0
43.	Phillip McNamara	1331	W117	L2	W55	W95	3.0
44.	Angela Murdock	1030	W118	L3	L56	W96	2.0
45.	Corey Ward	1240	WF	W4	L57	W97	3.0
XII	Maples B	1187	W27	W22	L5	L3	2.0
46.	Tom LaMaccia	1349	D112	W89	L17	L9	1.5
47.	Andy J. Wincel	1143	W113	W90	L18	L10	2.0
48.	Mike A. Naji	1246	W114	W91	W19	L11	3.0
49.	Jeanette A. Boni	1011	W115	W92	L20	L12	2.0
XIII	Mesick	1648	W19	L6	L7	W20	2.0
50.	Duane Croel	1718	W37	W21	W25	W81	4.0
51.	Matt Simerson	UR	W38	L22	L26	W82	2.0
52.	Roger Gunnon	UR	W39	L23	L27	W83	2.0
53.	Joseph Besaw	UR	L40	L24	L28	L84	0.0
XIV	Maples C	1107	L5	W26	W11	L6	2.0
54.	Shawn Lewandowski	1233	L17	W107	W42	L21	2.0
55.	Chris Monaco	1033	W18	W108	L43	W22	3.0
56.	Alex Contreras	1058	L19	W109	W44	L23	1.0
57.	Danielle M. Puzio	1102	L20	W110	W45	---	2.0
58.	Hafez Bazzi	UR	---	---	---	L24	0.0
XV	White B	1014	W21	W9	L4	L8	2.0
59.	Martin Neuhaus	1329	W85	W33	L13	L29	2.0
60.	Craig Faught	UR	W86	L34	L14	L30	1.0
61.	Pete James	934	L87	D35	L15	-	0.5
62.	Seth Honsinger	UR	W88	W36	L16	L31	2.0
63.	Adam Harahuc	UR	---	---	---	W32	1.0
XVI	Lessenger A	1198	W26	L5	L3	W25	2.0
64.	Antoine Franklin	1202	W107	L17	L9	L102	1.0
65.	Willie G. Thomas	1221	L108	L18	L10	W103	1.0
66.	Kevin L. Caggins	UR	W109	L19	L11	D104	1.5
67.	Jorge Sanchez	UR	D111	---	L12	---	0.5
68.	Anthony Harris	948	---	L20	---	W106	1.0

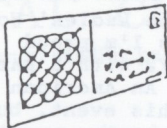
XVII	Fischer	1068	L4	L8	W28	D22	1.5
69.	Darlene Stinson	1378	L13	W29	W116	W89	3.0
70.	John Borowski	UR	L14	L30	L117	W90	1.0
71.	Mark Tillman	989	L15	L31	W118	L91	1.0
72.	Derrick McFolley	UR	L16	L32	WF	W93	2.0
XVIII	Cantrick B	UR	D22	W21	L2	L10	1.5
73.	Adam Neuhaus	UR	L89	W85	L5	L37	2.0
74.	Jason W. Pomeier	UR	L90	W86	L6	L38	1.0
75.	Anand Gaanger	UR	W91	L87	L7	L39	1.0
76.	Robert D. Anteau	UR	L92	W88	L8	L40	1.0
XIX	St. Angela	1136	L2	W23	L9	D21	1.5
77.	Brandon Hesperheide	1280	L5	L94	W33	W85	2.0
78.	Bradford Bilicki	1151	L6	W95	L34	L86	1.0
79.	Ryan Hesperheide	1069	L7	W96	L35	L87	1.0
80.	Stephen Sobjack	UR	L8	W97	L36	W88	2.0
XX	Ann Arbor Trail D	1082	L9	W27	D10	L13	1.5
81.	Carnell Wimberly	1294	L33	W112	W37	L50	2.0
82.	Jason Barrera	1064	L34	D113	L38	L51	0.5
83.	Robert Hunter	1004	L35	W114	L40	L52	1.0
84.	James Hester	UR	L36	W115	W41	W53	3.0
XXI	Monroe B	1234	L15	L18	W26	D19	1.5
85.	Richard Thurman	1271	L59	L73	W107	L77	1.0
86.	Andy Whiting	1246	L60	L74	W108	W78	1.0
87.	Dave L. Rush	1050	W61	W75	W109	W79	4.0
88.	David M. VanDenmark	UR	L62	L76	L111	L80	0.0
XXII	Lessenger B	1193	D18	L12	D24	D17	1.5
89.	Voncell Wright	1188	L73	L46	W98	L69	1.0
90.	Kenya Tolbert	1281	W74	L47	W99	L70	2.0
91.	Lamont Ramsey	UR	L75	L48	L100	W71	1.0
92.	Latisha Acey	UR	W76	L49	---	---	1.0
93.	DuJuan Duncan	UR	---	---	L101	W72	1.0
XXIII	Armstrong B	965	L7	L19	W27	L11	1.0
94.	Kyle Barker	1127	W25	W77	W112	W42	4.0
95.	Scott Warren	962	L26	L78	W113	L43	1.0
96.	Chad Amoss	UR	L27	L79	L114	L44	0.0
97.	Billy Gunther	UR	L28	L80	W115	L45	1.0
XXIV	Ann Arbor Trail E	842	L6	L10	D22	D21	1.5
98.	Andre Coles	979	L21	L37	L89	L107	0.0
99.	Brian J. Meagher	819	L22	L38	L90	W109	1.0
100.	Demetrius Ely	UR	L23	W39	W91	L110	2.0
101.	Julian Sandoval	UR	L24	L40	W93	W111	2.0
XXV	Clippert C	1085	L1	W28	L8	L16	1.0
102.	David Zacker	1235	L1	W28	L29	W64	2.0
103.	Daryl Tate	1085	L2	W56	L30	L65	1.0
104.	James Hinson	UR	L3	W84	L31	D66	1.5
105.	Mikera Bostic	UR	L4	WF	---	---	1.0
106.	Autumn Sky Burnett	UR	---	---	L32	L68	0.0
XXVI	Kinewa	UR	L16	L14	L21	D24	0.5
107.	Paul Senger	UR	L64	L54	L85	W98	1.0
108.	Jesse Hembroff-Fouma	UR	W65	L55	L86	---	2.0
109.	John Kelly	UR	L66	L56	L87	L99	0.0
110.	Mikhail Joshi	UR	---	L57	---	W100	1.0
111.	Andrew Desquin	UR	D67	---	W88	L101	1.5
XXVII	Haslett	UR	L12	L20	L23	D28	0.5
112.	Jeff Hubbell	UR	D46	L81	L94	L116	0.5
113.	Paul Kolar	UR	L47	D82	L95	L117	0.5
114.	Tracy Pierce	UR	L48	L83	W96	W118	2.0
115.	Steve Williams	UR	L49	L84	L97	WF	1.0
XXVIII	Armstrong C	UR	L11	L25	L17	D27	0.5
116.	Lester Smith	UR	L42	L102	L69	W112	1.0
117.	Gabe Garfield	UR	L43	L103	W70	W113	2.0
118.	Scott Genovese	UR	L44	L104	L71	L114	0.0

Board Winners

BOARD ONE			
Jennifer Skidmore	Armstrong A	4.0	
Duane Croel	Mesick	4.0	
Kyle Barker	Armstrong B	4.0	
BOARD TWO			
Eric Manor	Armstrong A	4.0	
Jennifer Barrios	Clippert A	4.0	
BOARD THREE			
Scott Hanson	Armstrong A	4.0	
Dave L. Rush	Monroe B	4.0	
BOARD FOUR			
Ray Mikus	White A	4.0	
Dawn Jones	Clippert A	4.0	
Ryan McCarty	Monroe A	4.0	
John R. Carr	Cantrick A	4.0	
Cornelius Fortune	Clippert B	4.0	

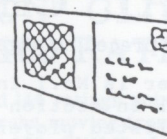
ALTERNATE

Andrew Desquin	Kinewa	1.5
----------------	--------	-----



POSTAL CHESS

USCF Postal Master Chris Rosenfield
2520 W. LaPalma Ave., Anaheim CA 92801



1986 MCA tournament qualifiers:

Section 1: Stefanski and Decker
Section 2 still has meaningful play in progress. Jarosz will qualify. New result: Jarosz 1 Beavers. Jarosz with 5 points wins the section. The important game remaining is Szczypka vs. Burg.
Section 3 Final: Beavers 1 Smith. DeJongh and Mellen qualify. If Beavers beats Mellen she and Donins will be finalists also.
Section 4: Wolfrom (6-0!) Schweikert and Rosenfield.
Section 5: Brinks and Allen

1988 MCA tournament: the MCA board of directors has been asked for permission to start a new tournament for the title of 1988 Michigan Postal Chess Champion. So far we have not been able to get financial backing from a computer manufacturer to supplement the prize fund, so as in the past it looks like the tournament will have to support itself. Anybody who plays postal chess thinking they are going to make a lot of money is nuts. But there isn't a cheaper hobby anywhere.

For the last several MCA postal tournaments, our director has been Helen Warren. She is the owner of APCT, one of the important postal chess organizations in the U.S. She has directed our tournament for free, not asking for a fee for postage, printing, the correspondence relating to time and other complaints, or anything. She is a chess professional who has donated countless hours to various chess projects for USCF and others. She is known for a no-nonsense attitude toward time complaints and impartial enforcement of rules. We owe her a great vote of thanks, and probably a plaque or listing as a patron of MCA for her efforts. She declines to direct the next MCA tournament, having just too many other commitments.

In the absence of the services of Helen Warren, and in view of the interest expressed in allowing players to use home chess computers to help select a move, (the word-processing or bookkeeping functions of a computer have always been legal) it is intended that the 1988 postal championships have the following format:

With entry, please indicate whether you wish a section in which it is allowed to use a chess computer for any purpose whatsoever, or one in which it is allowed to use one for bookkeeping or record keeping functions but not for generating a move, or whether you really don't care.

I expect to direct with the help of Alan Jones. Alan is team captain for the US-New Zealand match, the MCA-New Zealand match, and the US-Wales match. He is working closely with ICCF-US secretary Max Zavanelli. I have worked with Robert Karch, previous ICCF-US secretary, in enforcement of rules for the 7th U.S. correspondence chess championships, know the rules for the major chess organizations and plan to enforce them even as Helen Warren. If the results are to be reported to only one person, it saves you a postcard. At present we need duplicate reporting of results, to Helen Warren as TD and to me for the crosstables in the column. For 1988 the duplicity is eliminated.

In the 86MCA tournament it was assumed that people knew the rules. Helen Warren did not send out a copy of rules with the section assignments, perhaps because we had decided we wanted to use a 10/30 time control instead of the old 3 days/move. 10/30 conforms to the practice of other postal chess organizations in the U.S., results in fewer time complaints, and gives players more control over the distribution of time than 3 days/move. I am not aware of any problems caused by this time

control in the 1986 MCA postal championship prelims.

There are a couple of points where the rules of various organizations differ, and when we began the 1986 MCA tournament I didn't take a stand, feeling the whole thing was no big deal. Example: do Sundays and holidays count as thinking time? CCLA and ICCF say yes, USCF says no.

If an illegal move is made, should there be a time penalty? Is the offending player required to move the indicated piece? For example, if R2d2 is sent and it is an illegal move, is the player required to make a legal rook move?

On the above issues, I really don't care one way or the other, but in the 1986 MCA tournament it was pointed out that these points needed clarification. If you have an opinion, please express it when entering the tournament and the majority will rule. The playing rules will then be mailed out with section assignments. In areas where every major postal chess group in the country uses the same rules, I'll just copy the usual rules; where there are differences, we'll do what the players prefer.

In ICCF and the USCCC (which uses ICCF rules) it is fair to arrive at your move by any means you wish; in other U.S. organizations, it is regarded as cheating to set up the position on a chess computer, see what move the machine suggests, and then send off the machine's opinion as your move to your opponent. CCLA has a rule that anybody caught doing that would be expelled from the organization. When Max Zavanelli pointed out to participants in the U.S. Correspondence Championship that ICCF rules allowed computers and that the USCCC was operating under ICCF rules, I was in an absolute state of shock, communicated in this column. Mail to this column following the discussion was heavily in favor of allowing computers in the MCA postal tournament. There were some dissenters. The researcher in me sees an unrated state championship as a suitable vehicle to find out whether allowing the use of computers makes any difference. Therefore, it seems reasonable in the preliminary round to offer a choice. This means anybody who has some fancy hardware and wants to set up the position to see what the machine thinks, and take its advice or not as seems appropriate, can choose a section where this activity is regarded as OK, against opponents who have the same right. Those who want to try to out-psych an opponent and want no machines involved, can choose a computers-barred section. I don't know how we'll do the finals, but will worry about that - one when we know who qualifies. It will also be possible to enter, stating you don't really care whether computers are permitted or not, and such players will be most appreciated in our efforts to get sections to come out even.

One more piece of information will be wanted with entries for the purpose of sectioning: your ratings, if any.

Sections will be assigned in the following manner: players will be divided into sections with and without computers first, and each group treated separately. Next, in each group, players will be placed in order of rating. The rating used will be, first, USCF postal if you have one; if no USCF postal, then postal rating in CCLA or APCT or any other postal chess organization. If you have no postal rating but do have a USCF over-the-board rating, we'll use that. If you have no rating of any kind, we will section UNRs in the order received. This process will generate a list, rather like a wall chart.

Continued on next page

POSTAL CHESS

(From preceding page)

The top-rated player is No.1 in section 1. The second-rated is No.1 in section 2, etc. for n sections. The second-listed player will be assigned in reverse order of sections: player n+1 will be second in section n, and so on to player rated number 2n, who will be the second player in section 1. The third player will be assigned in ascending order of sections, fourth in descending order, back and forth. This process will generate, as nearly as possible, sections of equal strength. All this detail is given before we have anybody entered so that, with a TD playing in the tournament, there will be no complaint that I rigged the sections to pick opponents I can beat, or to give any player special opponents. The formula will be varied only to be sure father-son, husband-wife, brother-sister or similar pairs are not in the same section.

GAMES

In 1986 MCA Dan Burg tried a novelty in the tactical-complications style of 18th century classical chess, against Mark Stefanski's modern Latvian Gambit. I sent the game to Latvian Gambiteer James Jackson in hopes of getting him to write notes for me, and got the comment in rather colorful language that he didn't care for Dan's novelty. Mark liked it just fine as you can see below.

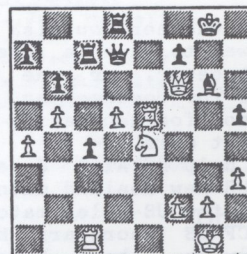
Dan Burg - Mark Stefanski
1986 MCA Prelim section 2
Latvian Gambit C40/10-11

1.e4 e5 2.Nf3 f5 The move that characterizes the opening. It was used by the Italian, Gioachino Greco and used to be known as the Greco Counter Gambit. In modern times Karlis Betins played it against players like Nimzovitch and Ilyn-Genevsky. It was used by the Seniors Chess Club of Riga, Latvia, in correspondence games against chess clubs from Stockholm, Sweden, and out of five games Black won three and drew two. FIDE renamed the opening the Latvian Gambit. There are special postal tournaments organized by the late Pablo Atars, which continue under O.L. Purins, 2026 Woodward Ave., Kalamazoo MI 49007, in which all games require this opening. The tournaments have attracted over 1000 players from all over the world. 3.Nxe5 Accepting the gambit. 3.Nc3 Nc6 4.Bb5 would transpose to the Schliemann variation of the Ruy Lopez. 3...Qf6 4.Nc4 fxe4 5.Qg4 Book would be 4.Nc3. 5...Ne7 6.Qh5+ g6 7.Qe5 Qxe5 8.Nxe5 Bg7 Black has his choice of ways to attack the N...Bg7 or ...d6. 9.f4 d6 10.Nc4 O-O 11.d3 exd3 12.Bxd3 Bf5 13.Bxf5 This tempo could better be used to develop: e.g.Nc3. 13...Nxf5 14.O-O It is a virtuous thought for White to want to be castled, but the development lag is getting critical. 14...Nd4 15.Rf2 Preventing Ne2+, forking. 15...b5 16.Ne3 Blocking the force of the Bc1 protecting f4. A decent square for the N might be a5. From a5 the N could go to b3, or keep the Nb8 from being developed to its best square. 16...Rxf4! Not a typo. If 17.Rxf4, again comes Ne2+, forking and recovering the rook. 17.Nc3 Rxf2 17...d5 would connect pawns and force a decision where the Nc4 will go. 18.Kxf2 Nbc6 19.a3 Doesn't develop. 19.Bd2 would free the Ra1 which would then guard the back rank and prevent the loss of the B which occurs in a few moves. 19...Rf8+ 20.Kg1 Ne5 21.b3 Better would be 21.a4 or 21.Ra2. Once the black Ns move, 21.b3 leaves the Nc3 unprotected. 21...Nef3+ 22.Kh1 Ne1 Also possible would be 22...Nxb3 23.cxb3 Bxc3. Or, 22...Nxc2 23.Nxc2 Bxc3 producing the same situation. 23.Bd2 Ra2 would put another defender on c2. 23...Nexc2 24.Ra2 Nxe3 25.Bxe3 Rf1+ 26.Bg1 Nxb3 27.Nxb5 c6! Chasing away the N guarding d4. 28.Nxd6 Bd4 29.O-1 29.h3 would prolong matters for awhile, but White is already down a pawn and will lose the B.

It's been awhile since you saw one of my games. Here's one from the Ladies' World Correspondence Chess Championships I'm proud of. Currently my score is 7 1/2-1 1/2 with 3 games to go, and I'm leading my section! An American has never qualified for the finals in this event, but I'm working hard. The remaining opponents are two Russians and a Polish IWGM. In all three I have the better game. If I win them all I advance for sure. You can help--send in your good games WITH NOTES so I can spend my time on those critical games!

Chris Rosenfield (USA) - Elena Bencini (Italy)
Ladies' 5th World Championship Prelim Section 1
Nimzo-Indian Defense E39/5

1.d4 Nf6 2.c4 e6 3.Nc3 Bb4 4.Qc2 Alekhine regarded this solid move as White's best, but it is rarely seen today in master play. Still, GM Forintos plays it every chance he gets. White prevents the doubling of c-pawns and guards the important e4 square. Commonly, White gets the advantage of the two bishops. Silman regards the move as not dynamic enough to play for an advantage. The d4 square is weakened and often White will lose time with the queen. Checking my postal records, I find I've played this move 8 times and scored 7-1; the loss was a 60-plus move affair in which I made a bad mistake about move 50 and can't blame the loss on the opening. You may remember another of the wins: Rosenfield-B.Finegold from the 1984 MCA postal tournament. Opening lesson:if a move works for you, play it. 4...c5 5.dxc5 O-O 6.a3 Bxc5 7.Nf3 Nc6 8.Bf4 d5 9.e3 Qe7 10.Bg5 Rd8 11.b4 The first non-book move. Why shouldn't I take a little extra space before making the next book move? 11...Bb6 I don't see that she has anything better--certainly nothing to distress me. 12.cxd5 exd5 This way I get an extra pawn in the center. 13.Bd3 h5 14.O-O Bg4 15.b5 Na5 16.Nd4 Nc4 17.h3 Bxd4 18.exd4 Be6 19.Rfe1 Rac8 20.a4 b6 21.Rac1 Rc7 22.Qe2 Kf8 23.Bxc4! like bishops better than knights as a rule, but the pins on my opponent's queen let me take a winning advantage. 23...dxc4 24.d5 Bf5 24...Bxd5? is tempting but opens a real can of worms: 25.Bxf6 and Black must choose among 25...Qxf6 (26.Nxd5!), 25...gxf6 (26.Qxh5!) and 25...Qxe2. This gets complicated: 26.Bxd8 Qxe1+ 27.Rxel and White is up a piece; or retrieve the Queen to, for example, d3 and after 27.Bxc7 White has two Rooks for the Queen. Probably the B does best to go to c8. A retreating move can be very hard to find, but on f5



d5 is booby-trapped!

(Black to move)

Better is 30...Re8, although after 31.Qg5+ Kf8 32.Qh6+ Kg8 Black isn't going to like that very much either. The rest of this is just wiping up. 31.Re5 Qd6 32.Re8+ Rxe8 32...Kh7 33.Qh8+ is no better. 33.Qxd6 Rec8 34.Rc3 h4 35.Qh6 1-0

Book Contest

Winner of the book contest, "Barry's Nightmare" is Dale Decker, who wins Volume 2 of the Encyclopedia of Endgames. We have a few bugs to work out in his voluminous solution, which will be given next time. Several others tried. It's tough!

Continued on next page

POSTAL CHESS

(From preceding page)

Man vs. Computer

A pair of postal games in which Rosenfield and Bartle are collaborating against Alan Jones assisted by some fancy hardware continues. We fed the computer a bishop in one game to get an attack; Jones tells us the computer said "Yum!" and asked if we wanted to give it any more. Now come the checks and we'll see if it gets indigestion on the bishop...by the time the next column goes in this one should be over or nearly so.

Games wanted for a Symposium

A year or so ago we did a group of games on a common theme. It would be fun to do another. I'd like to see your postal games in which, in the opening, Black has fianchettoed the KB, castled kingside, and after pushing f7-f5, White takes exf5, and Black recaptures with the g-pawn rather than with a piece. This move sounds rather silly, and to my sorrow I thought so too when Dave Wolfrom played it against me in 86MCA. But watch out! A skillful Black player can do wonders with that extra pawn in the center, as Dave demonstrated. The opening might be a KID or another of the Indian defenses. If we can get several games together we can study when this move works and when it doesn't!

3-COUNTY FLINT AREA HOLDS UNIQUE SCHOLASTIC TOURNEY

Finland Boy, Flint Girl Win All

Below are the top three winners in each of the three sections of the unique annual Tri-County Chess Championships held at the Genesee Intermediate School District in Flint last Dec. 13-14.

The event is open to all students in Genesee, Lapeer and Shiawassee counties, grades 5 through 12. Sixty entered this year. There was no entry fee. Over \$1,000 in trophies and scholarship funds was provided by ECIA Chapter 2 funds. It was sponsored by the Genesee Intermediate School District.

The three sections are shown below with the photos. The High School winner, Marco Kosanen, an exchange student from Finland, had a perfect 5-0 score, as did Jenny Skidmore in the Junior high section. Matt Hayes won the Elementary with 4 1/2. Each got a \$100 scholarship, a trophy and a traveling placque for their school.

The top three in each grade were also recognized. Gene Hickey directed, assisted by Mike Skidmore and Jim Mikus.

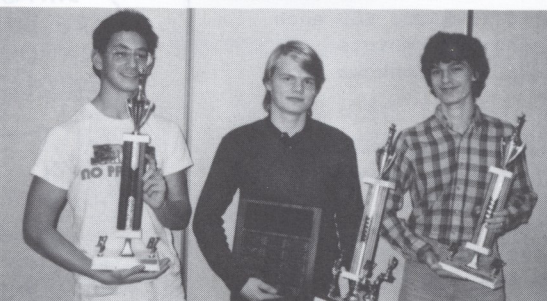
--Report and photos from Gene Hickey

Junior High School



1st-Jennifer Skidmore ARMCSTRONG
2nd-Brad Robinson LAPEER Wh.
3rd-James White LAPEER Wh.

High School



2nd-James Riseman LAPEER E.
1st-Marco Kosanen KEARSLEY
3rd-Dave McAuliffe KEARSLEY

Elementary



1st-Matt Hayes CLIO CART.
2nd-Matt Miles ARMSTRONG
3rd-Tony Altenritter CLIO CARTER

DAVE CALTON' CLIFF VAN LOON GAIN OVER 100 RATING POINTS

David W. Calton gained 144 ratings points since the last USCF rating supplement in Marcha moving from 161st to 84th in top ratings which puts him in the top 100. Cliff VanLoon also made it, after a gain of 111 points to jump from 158th to 98th place. Here is David Moody's current compilation of Michigan's top 100 active players.

MICHIGAN'S TOP 100

By David Moody

1 Fred Lindsay (1)	2411	51 Chris Eagle (52)	2079
2 Val Kavnatsky (2)	2362	52 Glenn Good (35)	2079
3 Steve Feldman (3)	2329	53 Ken Van Cleve (54)	2078
4 Eric Fischvogt (4)	2299	54 Tom Ward (55)	2076
5 Dan Boyk (5)	2294	55 John Shavallier (56)	2075
6 Steve Andrews (9)	2262	56 David Moody (66)	2071
7 Paul Poschel (6)	2258	57 Gary Sacco (57)	2071
8 David Hahn (10)	2249	58 Frank Helle (60)	2070
9 Robert O'Donnell (7)	2249	59 Howard Levine (58)	2070
10 Kevin Czuhai (14)	2248	60 Don Bohley (59)	2063
11 Kevin Noren (16)	2244	61 Steve Mitchell (61)	2063
12 John Wygrecki (8)	2244	62 Don Mason (62)	2059
13 Dexter Thompson (23)	2241	63 Bruce Robison (53)	2059
14 Larry Quigley (13)	2228	64 Richard Lees (65)	2051
15 Robin Cunningham (15)	2226	65 Jim Kulbacki (69)	2046
16 Nasser Abassi (17)	2216	66 William Fuller (79)	2043
17 John Concini (18)	2215	67 Gene Hickey (---)	2040
18 Jim Marfia (19)	2212	68 Greg Bailey (82)	2038
19 Robert Avery (20)	2201	69 Paul Bauerle (64)	2035
20 Issa Youssef (12)	2200	70 Randy Giminez (67)	2034
21 John Brooks (21)	2188	71 Chris Hankinson (68)	2031
22 Deuvoy Carroll (22)	2188	72 Jason Wysocki (86)	2029
23 Ron Finegold (23)	2176	73 Richard Johnson (70)	2024
24 David Wolfrom (27)	2163	74 Kenneth Martin (71)	2024
25 Robert Polk (28)	2160	75 Attila Lehotzky (72)	2021
26 Lineas Baze (24)	2159	76 Dale Postma (73)	2017
27 George Turner (29)	2153	77 Marcus Hendricks (74)	2016
28 Charles Bassin (30)	2149	78 Jason Morris (75)	2026
29 Tom Mazuchowski (26)	2145	79 Chip Kraft (76)	2012
30 Andrew Beaver (31)	2142	80 Kevin Pierce (77)	2012
31 Bill Groeller (11)	2142	81 Rudolf Thun (78)	2011
32 Ed Koster (32)	2142	82 Ed Bennett (84)	2008
33 Thomas Sloan (33)	2140	83 Leonard Dangremond(88)	2008
34 Carlton Thomas (34)	2133	84 David W. Calton (161)	2005
35 John Norcross (36)	2123	85 Les Smith (80)	2003
36 Mike Kebrdle (37)	2115	86 Stan Jarosz (83)	1998
37 Jerry Haapapuro (38)	2110	87 James Owens (91)	1998
38 James Haluska (39)	2110	88 Ed Williams (90)	1995
39 John Lang (40)	2109	89 Nir Cohen (87)	1991
40 Aaron Daniel (41)	2108	90 Larry Stanfield (85)	1988
41 Vester Wilson (42)	2107	91 Brian Garwood (92)	1985
42 Gary Kitts (46)	2101	92 James Jackson (81)	1985
43 Alex Yakhkind (45)	2100	93 Stan Golonka (63)	1982
44 Frank Fricko (47)	2095	94 Michael R. Smith (112)	1981
45 Tony Palmer (48)	2092	95 Tom Szczyпка (94)	1980
46 DuWayne Riggins (43)	2091	96 Benson Selitsky (95)	1979
47 Mark Knecht (44)	2089	97 Ed Mooney (97)	1978
48 Mark Pence (49)	2082	98 Cliff Van Loon (158)	1978
49 William Accad (50)	2081	99 Steve Mellen (96)	1976
50 Morgan Everett (51)	2080	100 Jeff Richburg (89)	1974

Compiled from the January, March, and May 1988 rating lists. Number in parentheses is ranking on previous list.

Biggest rating gains: David W. Calton (+144), Cliff Van Loon (+111), Dexter Thompson (+68).

CHESS TOURNAMENT CALENDAR

New GRAND RAPIDS Club

Kentwood Comm. Center, 355 48th St. (between Division & Eastern, site of Mich. Class Tourney). Info Jeff Boes (616) 669-5926.

Jun 18 Sa. GRAND RAPIDS Hex Tourney

above). Sections of 5 by ratings. Reg. 9-9:45AM. MCA & USCF. Entry \$6, \$3 more after Reg ends. Rds. 10-12-2:30-4:30-7. PRIZES, 1st each section: Choice of plaque or MCA membership (2yr if under 18 or over 64) No smoking or computers. Wheelchairs ok. INFO Ron Grzegorzczak 616/942-7730.

Jun 18-19 DEARBORN: St. Alphonse Open

Schaeffer Bldg., 7500 Schaeffer Hwy. 5 Rd Swiss, 30 moves 60 min. Entry \$12 by 6/13, \$15 later. MCA & USCF Reg. 9-9:45. Rds 10-2-6 and 11-3. PRIZES if 40: \$100-\$75-\$50; each class \$30-\$15 A,B,C,D,E/UNR.. NS/NC/W. Murlin Varner, 21703 Midway Ave. Southfield 48075 Phone 313/356-7867

Jun 25 Sa DETROIT Youth Cent. Inaugural

Renaissance Youth Center, 6900 McGraw (N.W. of I-94 & Livernois). Quads: Rd Robin sections of 4 by ratings. Reg. 9-9:45. Trophy 1st each quad & door prizes. Info Peter Nixon (313) 676-2985 or Booker Thomas 922-7850

Jun 25-26 ANN ARBOR: Dr. Gaba Memorial

EBA Club Domino Farms, Earharet Rd., 1mi. E. of US-23 & Plymouth Rd. 5 Rd. Swiss, 30/80, then 25/60. Reg 8:30-9:30. Entry \$14 by 6/18, \$20 later (\$12 for classes C,D,E,UNR by 6/18 \$15 later). MCA & USCF. Prizes: \$200-\$100-\$50; Exp. & A & B \$75 each, Class C & D/E/Unr \$50. Prizes guaranteed. NS/NC/W. Joe Feldman, 28449 Tapert, Southfield 48076.

July 2-4 WAYNE: Southeast Mich. Open

See adv. on next page

July 9 Sa. LANSING \$50/\$25 Mini-Swiss

Capital Federal Bldg. 6510 S. Cedar (I-96 Exit 104, south on Penn. to Cedar, 2 blks N. to site). 3-rd Swiss, sections 8-10 by ratings. 40 moves 1 hr, 30 min SD. Reg. 8:30-9:15. Rds 9:30-1-4:30. Entry \$12. Need MCA & USCF. PRIZES, each section: \$50, \$25. Info, V.E. Vandenburg TD, 2177 Michigan, Eaton Rapids MI 48827. (517)646-6142.

Jul 16-17 E. DETROIT: 24th Annual Open

E.D.Rec. Center, 16600 Stephens (2 blks E. of Gratiot) 5 rd. Swiss, 35/90 min. Entry \$13 by 7/11, \$20 later (\$17 E.D.Club members). Reg 8:30-9:45. MCA, USCF. Rds: 10-2-6:30, 10:30-3. Prizes if 60: \$175-\$125; \$65 each to top Exp-A-B-C and D/E/Unr. 5 Grand Prix points. NS/NC/W. Info. entries: Jim Kulbacki, 790 Tonkawa Tr., Lake Orion 48035. (313) 693-6610.

Jul 23-24 GRAND RAPIDS Summer Swiss

Kentwood Comm. Center, 355 48th St. (between Eastern & Division) 4-rd Swiss, 2 sections. Reg. 9-9:45. Rds 10 & 3:30 Sat. & Sun. MCA & USCF. ENTRY \$20 (\$5 more after 9:45). 50 moves 2 hrs. then SD/60. PRIZES if 30: OPEN sect. \$100-\$50-\$25; top under 2000 \$50; \$25 bonus for 4 pts. RESERVE sect., if 30: \$100-\$50-\$25; top under 1600 \$50; \$25 bonus for 4 pts. USCF membership to top unr-

rated and top Jr.--if over 2). Upset prize each section. NS/NC/W. INFO Glen Good (616) 532-7065.

July 23 Grand Rapids Odd-Speed Tourney

Open to all. Above site at after Rd 2 (about 8 pm) 5 min. round robins, sections of 6-8 seeded by ratings. Double RR final. Extra minute for each 100 rating points lower than your opp. (unrateds get estimated rating). Reg 7:30 PM. Entry fee \$1 if in Swiss, others \$2. Prizes based on entries. Not rated. Info Jeff Boes (616 669-598).

Jul 29-31 CHICAGO: N. American Class

See July CHESS LIFE magazine

Jul 30-31 ANN ARBOR Super Tornado

EBA Club, Domino Farms, Earhart Rd. 1 mi E of US-23 & Plymouth Rd. 8rd Swiss, 30/30 then 30/SD. Reg, 8:30-9:45. ENTRY \$14 by 7/23, \$17 at site (\$20 after 9:45) Need MCA,USCF. Prizes if 50: \$200-\$100; \$50 A,B,C,D/E/Unr. Rds. 10-12:30-3-5:30 each day. Joe Feldman 28449 Tapert, Southfield, 48076 313/357-1890.

Aug 20 Sa TRENTON Mini-Swiss

Hass Park Comm Bldg. 72 Washington Ave. 3rd. Swiss, sections of 8 by rating. Reg. 9-9:45. Rds. 10-1:30-5. 40/90 min, SD/30. Entry \$5 (\$6 after 9:45). MCA & USCF. PRIZES, Choice: \$20 or trophy to 1st each section. NS/NC/W. Ken Roberts, 5019 McMillan, Dearborn Height 48127. (313) 565-2123.

Aug 20-21 ANN ARBOR Super Tornado

Same format as July 30-31 above

Sept 2-5 LANSING: Mich Open Championship

See advertizement on page 24

MORE TOURNAMENT DATES

- Aug 20-21 Negaunee: U.P. Championship
- Aug 27 Grand Rapids Mich. Open Warm-Up
- Aug 27-28 Chicago: Midwest Women's Champship
- Sep 2-5 Lansing: Michigan Open
- Oct 1-2 DETROIT: Hart Plaza Open
- Oct 29 Ann Arbor: Mich Women's Championship
- Nov 5-6 Ann Arbor: Huron Valley Amateur



The Trenton Chess Club Presents the

1988 Southeast Michigan Open

July 2, 3 & 4

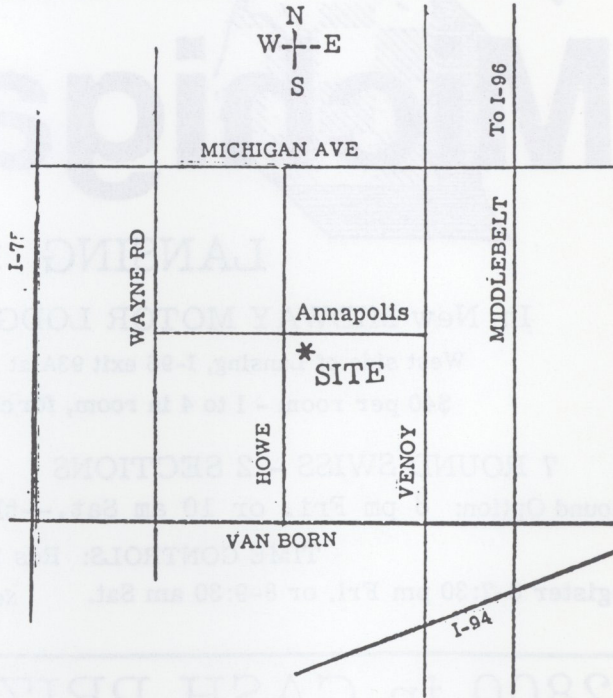
6 Round Swiss Tournament

Prizes - Guaranteed

1st \$500, 2nd \$300, 3rd \$200

4th to 8th \$ 100 each

- Under 2000 \$100, 70, 50
- Under 1800 \$100, 70, 50
- Under 1600 \$100, 70, 50
- Under 1400 \$100, 70, 50
- Unrated \$80, 40



\$2500 in Total Prizes

30 Grand Prix Points

Site: Wayne Recreation Center 313-721-7400
4635 Howe, Wayne, MI

Entry Fee: \$27 if received by 6/25/88; \$30 at site;
\$3 less for Trenton Chess Club Members

Registration: 9 - 10:30 am on 7/02/88; advance entries to
Ken Roberts, 5919 McMillan, Dearborn Hts, MI 48127
1/2 point bye available for first round

Time Control: 40 moves in two hours, then 20 in one hour

Rounds: Saturday 7/02/88: 11 am and 5 pm
Sunday 7/03/88: 9 am and 3 pm
Monday 7/04/88: 9 am and 3 pm

Info: Ken Roberts 313-565-2123



MCA FOUNDER'S MEMORIAL TOURNAMENT

Our Biggest Open Event of 1988

Big Prizes for Unrateds, Low-Rateds & Every Class!

58th Annual State Championship

Michigan Open

LANSING Labor Day Weekend Sept. 2-5

In New MIDWAY MOTOR LODGE 7711 W.Saginaw (517) 627-8471

West side of Lansing, I-96 exit 93A at M43 (Saginaw St) then 1 block East

\$40 per room - 1 to 4 in room, for chess tournament. Reserve early.

7 ROUND SWISS - 2 SECTIONS A GRAND PRIX TOURNAMENT

1st Round Option: 8 pm Fri. or 10 am Sat.--then 3 & 8 Sat., 1 & 7 Sun., 9:30 & 4 Mon.

TIME CONTROLS: Rds 1 & 2 50/2; Rds 3 - 7 40/2

Register 6-7:30 pm Fri. or 8-9:30 am Sat. Need MCA for Mich. res., & USCF (or USCF T-ops, \$7)

\$2800 in CASH PRIZES - 16 TROPHIES

OPEN SECTION (Open to All)

1st \$500 - 2nd \$300 - 3rd \$200

Under 2200 1st \$150 2nd \$100

Under 2000 150 100

Under 1800 100

Top Three Guaranteed

RESERVE SECTION Under 1800

1st \$300 2nd \$150

Under 1600 1st \$150 2nd \$100

Under 1400 150 100

Unrated 150 100

TROPHIES to all places, both sections (after tie-breaks if needed)

No smoking or computers. Wheelchair access.

MEETING FOR ALL MCA MEMBERS 9:30 a.m. Sunday at Site

ELECTIONS -- REPORTS -- OTHER BUSINESS

ENTRY FEES

Open Section

\$30 by 8/21 \$35 at site

Reserve Section

\$25 by 8/21 \$30 at site

ADVANCE: Include fee, MCA & USCF if needed, Choice to start Fri. or Sat.

MAIL BEFORE 8/20 to

Gary Kitts, MCA Pres.

1840 Boxwood Lane

East Lansing MI 48823

(517) 337-3831



2177 Michigan, Eaton Rapids MI 48827

Address Correction Requested

NON-PROFIT ORG.
U.S. POSTAGE
PAID
LANSING, MICHIGAN
PERMIT NO. 429