

# MICHIGAN CHESS

Price \$3.00



*Professional Amateur  
2016 Michigan Amateur Champion  
Greg Bailey*

**Fall/Winter 2016**



Published by the **Michigan Chess Association**  
 Affiliated with US Chess Federation  
 Visit us online at [www.michess.org](http://www.michess.org)  
 Send submissions to [michessmag@gmail.com](mailto:michessmag@gmail.com)  
 Editor: **Jeff Aldrich**

## Membership Fees

| <u>Membership Type</u>                        | <u>1 Year</u> |
|---|---------------|
| Regular Membership with Magazine              | \$15          |
| Regular Membership without Magazine           | \$10          |
| Senior (over 65)                              | \$10          |
| Family Membership                             | \$25          |
| (all members must reside at the same address) |               |
| Life Membership                               | \$300         |

For subscriptions to Canada or Mexico, add \$10.

For overseas subscriptions, add \$20.

All amounts are given in US dollars.

## Advertising Rates

### Standard Rates

|              |            |       |
|--------------|------------|-------|
| Full page    | 7.5 x 9.75 | \$110 |
| Half page    | 7.5 x 4.75 | \$70  |
| Quarter page | Flexible   | \$45  |

### Rates for Michigan Chess tournament organizers

|              |            |      |
|--------------|------------|------|
| Full page    | 7.5 x 9.75 | \$75 |
| Half page    | 7.5 x 4.75 | \$40 |
| Quarter page | Flexible   | \$20 |

## Purpose and Services

The Michigan Chess Association is a non-profit organization, which promotes chess education for juniors and adults by publishing Michigan Chess. We also aid schools, chess clubs and local chess events with publicity, information and supplies; by organizing Michigan championship events.

## Honorary Life Members

These members have been designated Honorary Life Members of the Michigan Chess Association in recognition of their services and contributions to chess in Michigan. They have honored the MCA far more than the Association could honor them. (\* Deceased)

|                   |                    |
|-------------------|--------------------|
| H. Jay Carr       | Fred Cramer*       |
| Ron Finegold*     | Howard Gaba*       |
| John Griffin      | Thomas A. Jenkins* |
| Lou Kellner       | David Moody        |
| Paul Poschel      | Paul Simmons*      |
| Mike Skidmore     | Harold Steen*      |
| Fjola Vandenburg* | V. E. Vandenburg*  |
| Fred Lindsay      | GM Ben Finegold    |

## MCA's Hall of Fame

|                   |                  |
|-------------------|------------------|
| V. E. Vandenburg* | Paul Poschel     |
| J. D. Brattin*    | Leon Stolzenburg |
| Fjola Vandenburg* | Marvin Palmer    |
| Howard Gaba*      | George Eastman   |
| Andrew Palmi*     | David Moody      |
| Ron Finegold*     | Harold Steen*    |
| Paul Simmons*     | H. Jay Carr      |
| Mike Skidmore     | Peter C. Nixon   |
| Stan Beckwith     | Fred Lindsay     |
| GM Ben Finegold   | John Brooks      |
| Paul Grams        |                  |

## Patron Members

Contributing \$75 or more in addition to membership dues makes you a Patron Member. We list your name for a year. All donations to the MCA are tax deductible.

|                   |                  |
|-------------------|------------------|
| Daniel Libby      | Timothy Ignasiak |
| Jean-Paul Pegeron | Joseph Dixon Sr  |

|                     |                     |                  |                |                            |
|---------------------|---------------------|------------------|----------------|----------------------------|
| President           | Sal Chehayeb        | Royal Oak        | (248) 219-5624 | MCAPresidentSAL@gmail.com  |
| Vice President      | Jeff Aldrich        | Davison          | (810) 955-7271 | jeffchess64@gmail.com      |
| Treasurer           | Justin Aldrich      | Burton           | (810) 938-8279 | jusaldrich@comcast.net     |
| Secretary           | Stan Jarosz         | Grand Rapids     | (616) 784-1235 | sjarostan@netscape.net     |
| Elected Director    | Kevin Fite          | Southfield       | (248) 219-5702 | kevin@fite.com             |
| Elected Director    | Bradley Rogers      | Sterling Heights | (248) 255-7449 | bradleyrogers22@msn.com    |
| Elected Director    | Norman Haygood      | White Lake       | (248) 366-0954 | nhaygoodjr@aol.com         |
| Appointed Director  | Donna Marcus        | Royal Oak        | (248) 990-0927 | donnamarcus2015@gmail.com  |
| Appointed Director  | Scott Burnham       | Shelby Twp       | (586) 612-9275 | itsyourmove@icloud.com     |
| Appointed Director  | Loren Schwiebert    | Canton           | (734) 718-2217 | loren@wayne.edu            |
| Appointed Director  | Kwa Shabu           | Detroit          | (313) 895-1312 | kwabena.arts@sbcglobal.net |
| Appointed Director  | T.C. Yanish         | Detroit          | (313) 580-4647 | tcyanish@gmail.com         |
| Appointed Director  | Samanatha Shaffer   | Madison Heights  | (248) 760-1778 | shaffer1022@gmail.com      |
| Scholastic Director | Christopher Sims II | Roseville        | (248) 667-2118 | chesscoachsims@outlook.com |
| Editor              | Jack Wood           | Dearborn         |                | futuregm888@icloud.com     |

# Michigan's Top 100

## December 2016 USCF Rating List

(From USCF Website, Regular Rated within Last Year)

| Rank | Player               | Rating | Rank | Player                | Rating |
|------|----------------------|--------|------|-----------------------|--------|
| 1    | IM Atulya Shetty     | 2502   | 51   | Mandy Lu              | 1992   |
| 2    | IM Safal Bora        | 2467   | 52   | Kyle Webster          | 1990   |
| 3    | FM Mark Heimann      | 2446   | 53   | Manmohan Das          | 1989   |
| 4    | FM Seth Homa         | 2419   | 54   | Andrew Schremser      | 1989   |
| 5    | Hanxiang Li          | 2404   | 55   | Michael A Smith       | 1981   |
| 6    | FM Edward Song       | 2399   | 56   | Kevin Jackson Sr      | 1978   |
| 7    | FM Ben Li            | 2357   | 57   | Michael Dang          | 1977   |
| 8    | CM Ehab Elyass       | 2348   | 58   | Joel Halloran         | 1961   |
| 9    | Michael Chen         | 2310   | 59   | Jeff Aldrich          | 1960   |
| 10   | Prachura Prateek     | 2300   | 60   | Justinu Chen          | 1957   |
| 11   | James Canty Iii      | 2297   | 61   | Allen Wickering       | 1956   |
| 12   | Jalen Wang           | 2272   | 62   | Evan Hawver           | 1956   |
| 13   | FM David Sprenkle    | 2262   | 63   | Akash Narayanan       | 1953   |
| 14   | WFM Apurva Virkud    | 2256   | 64   | Harrison He           | 1950   |
| 15   | Joshua Posthuma      | 2255   | 65   | Ronald Williams       | 1948   |
| 16   | FM Andrew Hubbard    | 2241   | 66   | Alan Gregg            | 1940   |
| 17   | Ameer Ghobrial       | 2234   | 67   | Zoran Stojanovski     | 1938   |
| 18   | Manis Davidovich     | 2230   | 68   | Michael Zheng         | 1936   |
| 19   | Eric Fischvogt       | 2212   | 69   | Krishna Venkatasubba  | 1933   |
| 20   | Ratko Bojanovic      | 2204   | 70   | Daniel Sajkowski      | 1925   |
| 21   | Kevin Czuhai         | 2202   | 71   | Joseph Paris          | 1925   |
| 22   | Mark Finegold        | 2202   | 72   | Duane Croel           | 1924   |
| 23   | Timothy McFrew       | 2201   | 73   | Aditya Bajaj          | 1922   |
| 24   | Kevin Noren          | 2200   | 74   | Gene Hickey           | 1919   |
| 25   | Thomas Ward          | 2182   | 75   | Eric Larson           | 1917   |
| 26   | John Brooks          | 2158   | 76   | Zachary Smith         | 1915   |
| 27   | CM Alaa-Addin Moussa | 2155   | 77   | Thomas LaForge        | 1913   |
| 28   | David Kvatadze       | 2142   | 78   | Michael Clark         | 1909   |
| 29   | Ariel Levi           | 2140   | 79   | Mike Williams         | 1902   |
| 30   | Anthony Nichols      | 2132   | 80   | Nick Schwerin         | 1901   |
| 31   | David Hahn           | 2123   | 81   | Stanley Jarosz Jr     | 1900   |
| 32   | IM Ibrahim Chahrour  | 2122   | 82   | Phil Roe              | 1900   |
| 33   | Robert E O'Donnell   | 2115   | 83   | WFM Sasha Konovalenko | 1896   |
| 34   | Ravi Khanna          | 2115   | 84   | Ricky Warnicke        | 1894   |
| 35   | Benjamin Brandt      | 2107   | 85   | Jonathan Prairie      | 1893   |
| 36   | Surya Parasuraman    | 2094   | 86   | Bryan Wilson Jr       | 1892   |
| 37   | Kameron Tolliver     | 2090   | 87   | Tony West             | 1889   |
| 38   | Jack Wood            | 2085   | 88   | Tim Knowlton          | 1886   |
| 39   | Justin Liang         | 2074   | 89   | Ater Gorgis           | 1880   |
| 40   | Tony Palmer          | 2052   | 90   | Ashley Carter         | 1873   |
| 41   | Bronson Gentry       | 2047   | 91   | Justin Meek           | 1871   |
| 42   | William Rhee         | 2046   | 92   | Raymond Garrison      | 1867   |
| 43   | Clara McGrew         | 2045   | 93   | Douglas Fick II       | 1866   |
| 44   | Salah Chehayeb       | 2039   | 94   | Matthew Morabito      | 1860   |
| 45   | Gregory Bailey       | 2024   | 95   | Lonnie Rutkofske      | 1859   |
| 46   | Bradley Rogers       | 2019   | 96   | Gary Morton           | 1859   |
| 47   | James Sawaski        | 2009   | 97   | Vijay Kodali          | 1859   |
| 48   | Barry Endsley        | 2000   | 98   | Daniel Libby          | 1854   |
| 49   | Morgan Everett       | 2000   | 99   | Chris Schmidt         | 1848   |
| 50   | Hassan Sobh          | 2000   | 100  | Isaac Zylstra         | 1845   |

# Current Michigan Champions

|  |   |
|--|---|
| 2016 Michigan Open                     | FM Andrew Hubbard                                     |
| 2016 Michigan Open Reserve             | David Curtis Jr                                       |
| 2016 Michigan Open Booster             | Jason Shi   |
| 2015 Michigan Amateur                  | Greg Bailey   |
| 2016 Master/Expert                     | Manis Davidovich                                      |
| 2016 Expert Champion                   | Timothy McGrew  |
| 2016 Class A Champion                  | Manmohan Das  |
| 2016 Class B Champion                  | Nick Schwerin   |
| 2016 Class C Champion                  | David Scott   |
| 2016 Class D Champion                  | Chris Locricchio                                      |
| 2016 Class E Champion                  | Samay Achar   |
| 2016 Novice Champion                   | Joshua Svinarich                                      |
| 2016 Michigan Action                   | FM Mark Heimann                                       |
| 2016 Michigan Speed                    | FM Mark Heimann                                       |
| 2016 Senior Champion                   | Greg Bailey   |
| 2016 Senior Reserve Champion           | Anthony Holden  |
| 2016 Michigan Women's                  | WFM Sasha Konovalenko                                 |
| 2016 Primary K-3 Team                  | Troy Barnard  |
| 2016 Primary K-3 Team Reserve          | Grand Rapids Lakeside Barnes                          |
| 2016 Elementary K-5 Team               | Troy Gallimore Knights                                |
| 2016 Elementary K-5 Team Reserve       | St Clair Shores St Isaac Jogues                       |
| 2016 Elementary K-6 Team               | Bloomfield Hills Roeper                               |
| 2016 Junior High K-9 Team              | Detroit University Prep MS A                          |
| 2016 Junior High K-9 Team Reserve      | Detroit Sampson-Webber<br>Detroit Bates Academy B1    |
| 2016 High School 9-12 Team             | Ann Arbor Greenhills HS                               |
| 2016 High School K-12 Team Reserve     | Troy HS<br>Ann Arbor J+Huron HS                       |
| 2016 Michigan Junior                   | IM Safal Bora   |
| 2016 Michigan Young Junior             | Ben Li  |
| 2016 Michigan Young Junior Reserve     | Constantin Stanesco-Bellu                             |
| 2016 Michigan Children's               | Michael Zheng   |
| 2016 Michigan Children's Reserve       | Isonga Murembya                                       |
| 2016 Michigan Young Children's         | Charlie Reese   |
| 2016 Michigan Young Children's Reserve | Abhinav Rajanish                                      |
| 2016 Scholastic Club K-12 Team         | Detroit City Chess Club                               |
| 2016 Scholastic Club K-12 Individual   | Adam Dehollander<br>Bryan Wilson Jr<br>Micale Garland |
| 2016 Scholastic Club K-8 Team          | Detroit City Chess Club                               |
| 2016 Scholastic Club K-8 Individual    | David Makarczyk<br>Andrew Friedman                    |
| 2016 Scholastic Club K-5 Team          | Holland Chess Academy                                 |
| 2016 Scholastic Club K-5 Individual    | Charlie Reese   |
| 2016 Scholastic Club K-3 Team          | Okemos  |
| 2016 Scholastic Club K-3 Individual    | Jason Shi<br>Ashrith Mathiyazhagan                    |

All board diagrams created using  
<http://www.jinchess.com/chessboard/composer/>  
 by Alexander Maryanovsky

## NEW EDITOR

As you now know, this edition of Michigan Chess magazine is extremely late even with just an abbreviated issue. For a while, my increased responsibilities at work and for MCA have made it increasingly difficult to find any time to spend working on the magazine. Basically, I have been the point person for almost every MCA event over the last year at the pace of about once a month. Every time I tried to do some work on the magazine, it was time to deal with the next event. So, this will be my final magazine as editor.

It is time to hand the reigns over to someone that can devote more time dedicated to the magazine. At the last board meeting, the MCA board approved Jack Wood as the new editor of the magazine. If you have information for the magazine, please send them to Jack at [futuregm888@icloud.com](mailto:futuregm888@icloud.com). Please help him make a quality magazine by providing information from chess events around the state.

Please be patient as we work out this transition. The mailings will be back-dated so expired members will still receive the expected number of issues from when they joined. If you recently renewed your membership, you may receive an extra issue or two.

I'll still be involved with MCA in many ways, but the more we can split up the work, the better our organization can serve its members.

Thanks,  
Jeff

### Shop at AmazonSmile

and Amazon will make  
a donation to:

Michigan Chess  
Association

Get started

amazon smile

## Table of Contents

|  |           |
|--|-----------|
| Chess Quiz.....  | 5         |
| Ad: 2017 Michigan Scholastic Team Chess Championships..... | 6         |
| 2016 Michigan Amateur Championship.....                    | 7         |
| Ad: 2016 Michigan Junior Championships.....                | 9         |
| Opening Study: French Tarrasch, Chistyakov Variation.....  | 10        |
| 2016 Michigan Junior High Championships Pictures.....      | 11        |
| 2016 Michigan Reps - USCF Invitational Tournaments.....    | 14        |
| Michigan Chess Clubs.....                                  | 18        |
| Michigan Chess Tournament Calendar.....                    | 10        |
| Ad: 2017 Michigan Master/Expert & Class.....               | Back Page |

## Chess Associations in Michigan

|                                 |  |
|---------------------------------|--|
| Michigan Chess Association      | <a href="http://www.michess.org">www.michess.org</a>                     |
| West Michigan Chess             | <a href="http://www.westmichiganchess.com">www.westmichiganchess.com</a> |
| Lake Superior Chess Association | <a href="http://www.michess.org/up">www.michess.org/up</a>               |

*Websites for chess clubs in Michigan are listed in "Chess Clubs" near the back of the magazine.*

## National/International Chess Websites

|                                |  |
|--------------------------------|--|
| United States Chess Federation | <a href="http://www.uschess.org">www.uschess.org</a>                 |
| World Chess Federation (FIDE)  | <a href="http://www.fide.com">www.fide.com</a>                       |
| Chess Federation of Canada     | <a href="http://www.chess.ca">www.chess.ca</a>                       |
| English Chess Federation       | <a href="http://www.englishchess.org.uk">www.englishchess.org.uk</a> |
| German Chess Federation        | <a href="http://www.schachbund.de">www.schachbund.de</a>             |
| Russian Chess Federation       | <a href="http://www.russiachess.org">www.russiachess.org</a>         |

### Did you know???

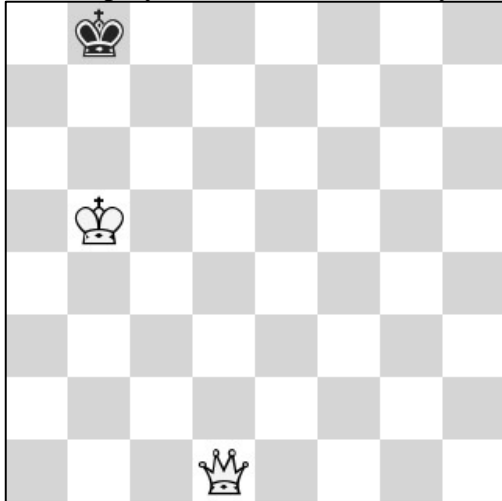
*You can connect with the Michigan Chess Association on Facebook™! Just search for "Michigan Chess Association" and Like MCA! It's that simple!*



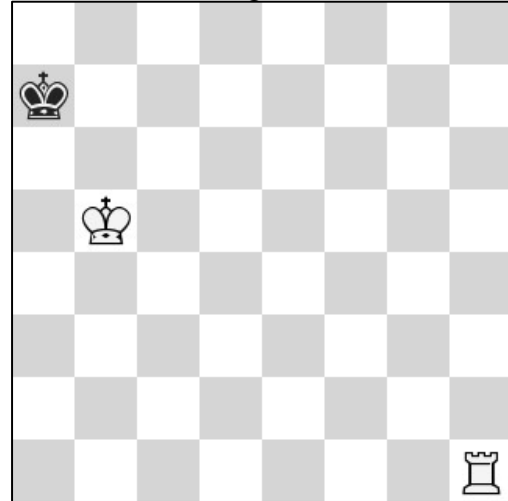
# CHESS QUIZ

**Tony Palmer**

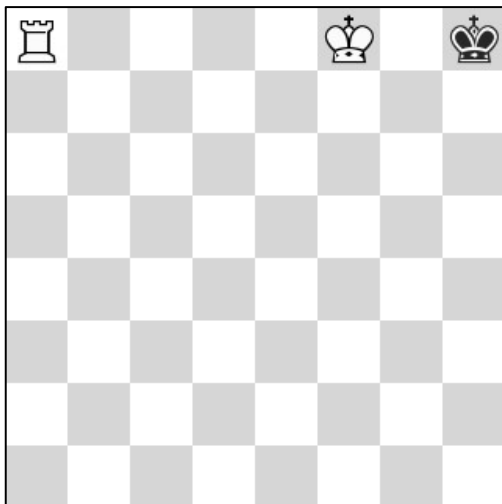
Endgame theory has four Basic Mates: KQ vs K, KR vs K, KBB vs K, and KBN vs K. These should be a snap for tournament players, with White to Play and Win by convention. Solutions on Page 13.



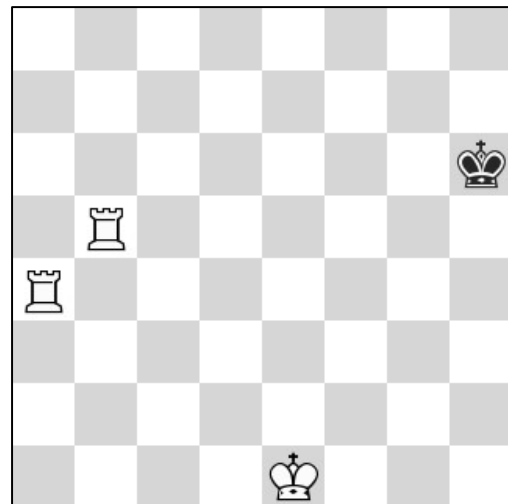
1) White to Move - Mate in Three



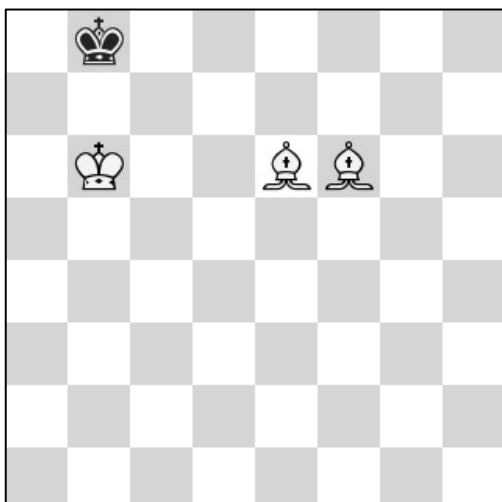
2) White to Move - Mate in Four



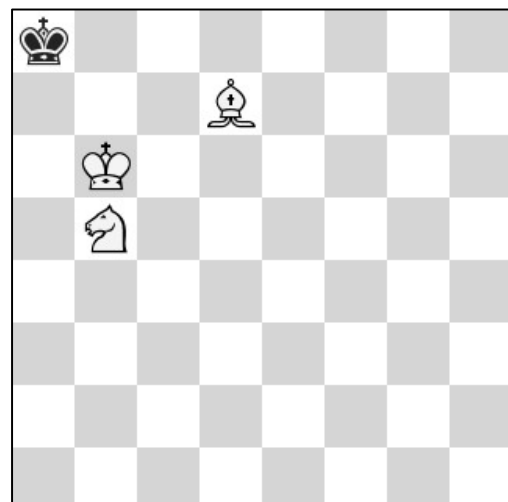
3) White to Move - Mate in Three



4) White to Move - Mate in Three



5) White to Move - Mate in Two



6) White to Move - Mate in Three

# 2017 MICHIGAN SCHOLASTIC TEAM CHESS CHAMPIONSHIPS

**NO ON-SITE REGISTRATION** Register online at <http://www.onlineregistration.cc>

| EVENT   | SITE  | OPEN TO   | RNDS                                     | TIME CONTROL  | REG. DEADLINE   | TROPHIES  | ENTRIES  |
|---|---|---|--|---|---|---|--|
| <b>PRIMARY K-3 CHAMPIONSHIP</b><br>February 4, 2017       | Baker College Student Center<br><br>1500 University Dr<br>Auburn Hills MI 48326   | K-3   | 5-SS;<br><br>9am 11am<br>1pm 3pm<br>5pm  | <b>G/40;d5</b>  | Online by 1/30/2017<br><br>Mail entries postmarked by 1/27/2017<br><br>Invoice for school payment, please contact the TD by 1/23/2017 to allow time for processing. | Top 10 teams + all at 3.5<br>Board Prizes:<br>Gold 5 pts,<br>Silver 4-4.5 pts<br>Bronze 3.5 pts | <b>\$16 per player</b><br><br><b>NO ON-SITE REGISTRATION FOR ALL SECTIONS.</b><br><br>Online registration:<br><a href="http://www.onlineregistration.cc">http://www.onlineregistration.cc</a><br>(Preferred Method)<br><br>Jeff Aldrich<br>P.O. Box 40, Flint, MI 48501<br>810-955-7271<br>jeffchess64@gmail.com |
| <b>PRIMARY K-3 RESERVE</b><br>February 4, 2017            |   | K-3 U150  |  |   |   | Top 7 teams + all at 3.5<br>Board Prizes:<br>Gold 5 pts<br>Silver 4-4.5 pts<br>Bronze 3.5 pts   |  |
| <b>ELEMENTARY K-5 CHAMPIONSHIP</b><br>February 4, 2017    |   | K-5   |  |   |   | Top 10 teams + all at 3.5<br>Board Prizes:<br>Gold 5 pts,<br>Silver 4-4.5 pts<br>Bronze 3.5 pts |  |
| <b>ELEMENTARY K-5 RESERVE</b><br>February 4, 2017         |   | K-5 U300  |  |   |   | Top 7 teams + all at 3.5<br>Board Prizes:<br>Gold 5 pts<br>Silver 4-4.5 pts<br>Bronze 3.5 pts   |  |
| <b>ELEMENTARY K-6 CHAMPIONSHIP</b><br>February 4, 2017    |   | K-6   |  |   |   | Top 10 teams + all at 3.5<br>Board Prizes:<br>Gold 5 pts<br>Silver 4-4.5 pts<br>Bronze 3.5 pts  |  |
| <b>JR. HIGH K-9 CHAMPIONSHIP</b><br>February 25, 2017     | Oakland Center<br>Oakland University<br><br>2200 N Squirrel Rd<br>Rochester, MI 48309<br>Banquet rooms A+B<br>2 <sup>nd</sup> floor | K-9   | 5-SS;<br><br>9am 11am<br>1pm 3pm<br>5pm  | <b>G/40;d5</b>  | Online by 2/20/2017<br><br>Mail entries postmarked by 2/17/2017   | Top 10 teams + all at 3.5<br>Board Prizes:<br>Gold 5 pts<br>Silver 4-4.5 pts<br>Bronze 3.5 pts  |  |
| <b>JR. HIGH K-9 RESERVE</b><br>February 25, 2017          |   | K-9 U700  |  |   |   | Top 7 teams + all at 3.5<br>Board Prizes:<br>Gold 5 pts<br>Silver 4-4.5 pts<br>Bronze 3.5 pts   |  |
| <b>HIGH SCHOOL CHAMPIONSHIP 9-12</b><br>February 25, 2017 |   | HS Teams only<br>1 team per school<br>Grades 9-12 | 4-SS;<br><br>9:30am 12noon<br>2:45pm 6pm | Rounds 1-2:<br><b>G/55;d5</b><br><br>Rounds 3-4:<br><b>G70;d5</b> | Invoice for school payment, please contact the TD by 2/13/2017 to allow time for processing.  | Top 10 teams<br>Board Prizes:<br>Gold 4 pts<br>Silver 3.5 pts<br>Bronze 3 pts                   |  |
| <b>HIGH SCHOOL RESERVE K-12</b><br>February 25, 2017      |   | Rated U1000 or Additional school teams K-12       |  |   |   | Top 6 teams<br>Board Prizes:<br>Gold 4 pts<br>Silver 3.5 pts<br>Bronze 3 pts                    |  |

|              |  |
|--------------|--|
| <b>Info</b>  | <ul style="list-style-type: none"> <li>• <b>Teams:</b> All players on a team must be full time students at the same school. Each Team consists of 4 Players. Team May Play with 3, or include an Alternate for 5 total. See listing on MCA website (<a href="http://www.michess.org">www.michess.org</a>) for details of home school exceptions.</li> <li>• <b>Board Order:</b> MCA Standing Rule 84-03: Regarding board order in team tournaments: Rated players should generally be placed in rating order; unrated players may be placed anywhere. This should be done with fairness in mind: The strongest player on each team should play on first board, no matter whether he has a relatively high or low rating or is unrated. The tournament director may, at his discretion, change submitted player placements, after considering evidence from various sources (non-USCF ratings, other coaches, etc.). (Adopted 06/21/84).</li> <li>• <b>Extra Rated Games:</b> Each round, Fourth boards without an opponent and alternates are paired randomly so they can play rated games. These games are optional and players are not guaranteed a game. Points scored in these matches DO NOT count for individual medals.</li> <li>• <b>Equipment:</b> Boards and Pieces are provided for tournament games. Bring your own set for skittles between rounds.</li> <li>• <b>Bring Clocks:</b> Games may start without clocks, but games running long will have a clock placed on them with very little time.</li> <li>• <b>Notation:</b> All players must record the moves of their game until one player has less than 5 minutes remaining on the clock.</li> <li>• <b>Cell Phones:</b> No Players may have cell phone in their possession during their game.</li> <li>• <b>Spectators:</b> Parents and Coaches will be separated from the playing area once games begin.</li> </ul> |
| Registration | <p>Online registration: <a href="http://www.onlineregistration.cc">http://www.onlineregistration.cc</a><br/>Do not send cash. Make all checks or money orders payable to Michigan Chess Association</p> <p>Players are registered individually. When registering online, register players by school (not by team). Coaches will submit Team Rosters by Wednesday before event. \$10 Processing Fee per Team for Roster / Section changes after that Wednesday. Rosters will be posted on the MCA website (<a href="http://www.michess.org">www.michess.org</a>) under respective "Team" areas. Coaches should confirm Rosters in Advance.</p>  |
| Check in     | <p>Teams must be paid in advance and will be paired for round 1. No need to check in. Coaches/Parents should inform TD before 8:15 if one of their players will not be present. Processing Fee of \$3 deducted for withdrawn entries. No refunds will be given for anyone who is paired for the first round. Coaches should email the TD their club rosters in the week before the tournament.</p>   |

# 2016 Michigan Amateur Championship

The 2016 Michigan Amateur Championships was held in Lansing at the University Quality Inn over Memorial Weekend (May 26-27). The main section was open to players rated under 2000. There was also a one-day U800 section for beginners on Saturday. The 2017 event is already set for the weekend of June 2-3 at the same hotel.

## Crosstables

### Amateur Championship (U2000)

| No. | Name                  | Rating | Rd 1 | Rd 2 | Rd 3 | Rd 4 | Rd 5 | Score |
|-----|-----------------------|--------|------|------|------|------|------|-------|
| 1   | Gregory Bailey        | 1911   | W14  | W17  | W12  | W4   | W5   | 5.0   |
| 2   | Thomas LaForge        | 1877   | W41  | W21  | 1/2  | W8   | D9   | 4.0   |
| 3   | Kevin Gregory         | 1727   | D28  | W49  | D6   | W35  | W13  | 4.0   |
| 4   | Hanshi Zuo            | 1741   | W27  | W24  | W13  | L1   | D8   | 3.5   |
| 5   | Phil Roe              | 1921   | 1/2  | W28  | W10  | W20  | L1   | 3.5   |
| 6   | Ayush Das             | 1680   | W38  | D15  | D3   | W14  | D7   | 3.5   |
| 7   | James Karakos         | 1721   | W25  | D26  | W16  | D18  | D6   | 3.5   |
| 8   | Ezekiel Houghton      | 1663   | W32  | W23  | W29  | L2   | D4   | 3.5   |
| 9   | Stanley Jarosz        | 1909   | W30  | L10  | W37  | W22  | D2   | 3.5   |
| 10  | Ashwin Balaji         | 1598   | W43  | W9   | L5   | D11  | W29  | 3.5   |
| 11  | Andrew Schremser      | 1912   | W19  | L13  | W15  | D10  | W26  | 3.5   |
| 12  | Dakshesh Daruri       | 1650   | W37  | W22  | L1   | D27  | D16  | 3.0   |
| 13  | Eugene McClure        | 1614   | W42  | W11  | L4   | W32  | L3   | 3.0   |
| 14  | Zachary Houghton      | 1422   | L1   | W31  | W49  | L6   | W32  | 3.0   |
| 15  | Gerald Kizer          | 1493   | W34  | D6   | L11  | W28  | D20  | 3.0   |
| 16  | Joe Beane Jr          | 1528   | W36  | D18  | L7   | W41  | D12  | 3.0   |
| 17  | John Smalec           | 1600   | W31  | L1   | 1/2  | D40  | W27  | 3.0   |
| 18  | Milan Talreja         | 1721   | W35  | D16  | W26  | D7   | ---  | 3.0   |
| 19  | Gary Ugrinovskiy      | 1447   | L11  | W46  | W36  | D29  | D21  | 3.0   |
| 20  | Dale Shalifoe         | 1619   | W39  | W33  | 1/2  | L5   | D15  | 3.0   |
| 21  | David Sundeen         | 1600   | W47  | L2   | 1/2  | W30  | D19  | 3.0   |
| 22  | Jade Ge               | 1483   | W50  | L12  | W45  | L9   | W34  | 3.0   |
| 23  | John Jones            | 1492   | W44  | L8   | L33  | W48  | W38  | 3.0   |
| 24  | Ronald Grzegorzczak   | 1591   | W48  | L4   | L32  | W45  | W35  | 3.0   |
| 25  | Eric Hobson Jr        | 1372   | L7   | L45  | W43  | W36  | W40  | 3.0   |
| 26  | Curley Taylor Jr      | 1580   | W45  | D7   | L18  | W33  | L11  | 2.5   |
| 27  | Eric Wright           | 1387   | L4   | W43  | W34  | D12  | L17  | 2.5   |
| 28  | Connor Linn           | 1383   | D3   | L5   | W47  | L15  | W42  | 2.5   |
| 29  | Nicholas Konovalenko  | 1615   | W46  | W40  | L8   | D19  | L10  | 2.5   |
| 30  | George Goeminne       | 1420   | L9   | D42  | W52  | L21  | W33  | 2.5   |
| 31  | Ernest Landrum        | 1155   | L17  | L14  | D39  | W46  | W41  | 2.5   |
| 32  | Michael Aldrich       | 1334   | L8   | W44  | W24  | L13  | L14  | 2.0   |
| 33  | Sanjana Ramesh        | 1066   | W51  | L20  | W23  | L26  | L30  | 2.0   |
| 34  | Gary Houghton         | Unr    | L15  | W38  | L27  | W37  | L22  | 2.0   |
| 35  | Ed Mandell            | 1356   | L18  | W48  | W51  | L3   | L24  | 2.0   |
| 36  | Adhvaith Rajanish     | 925    | L16  | Bye  | L19  | L25  | W47  | 2.0   |
| 37  | Jared Ge              | 1269   | L12  | W50  | L9   | L34  | W45  | 2.0   |
| 38  | Ben Li                | 1351   | L6   | L34  | W50  | W49  | L23  | 2.0   |
| 39  | Samay Achar           | 1225   | L20  | L51  | D31  | D47  | W48  | 2.0   |
| 40  | Brian Liu             | 1480   | WF   | L29  | 1/2  | D17  | L25  | 2.0   |
| 41  | Roman Ugrinovskiy     | 1410   | L2   | D47  | W42  | L16  | L31  | 1.5   |
| 42  | Justin Song           | 1184   | L13  | D30  | L41  | W44  | L28  | 1.5   |
| 43  | Sean McCormick        | 1030   | L10  | L27  | L25  | W50  | D46  | 1.5   |
| 44  | Srikanth Lodd         | Unr    | L23  | L32  | D46  | L42  | W49  | 1.5   |
| 45  | Christopher Agee      | 983    | L26  | W25  | L22  | L24  | L37  | 1.0   |
| 46  | Dingjia Shen          | 1213   | L29  | L19  | D44  | L31  | D43  | 1.0   |
| 47  | Tejas Ayyagari        | 1047   | L21  | D41  | L28  | D39  | L36  | 1.0   |
| 48  | Grant Tang            | 1027   | L24  | L35  | Bye  | L23  | L39  | 1.0   |
| 49  | Ashrith Mathiyazhagan | 758    | Bye  | L3   | L14  | L38  | L44  | 1.0   |
| 50  | Tommy Coleman         | Unr    | L22  | L37  | L38  | L43  | Bye  | 1.0   |
| 51  | Richard Wilson        | 1600   | L33  | W39  | L35  | ---  | ---  | 1.0   |
| 52  | Levi Durham           | 569    | 1/2  | ---  | L30  | ---  | ---  | 0.5   |

## U800 Section

| No. | Name                 | Rating | Rd 1 | Rd 2 | Rd 3 | Rd 4 | Rd 5 | Score |
|-----|----------------------|--------|------|------|------|------|------|-------|
| 1   | David Shen           | 595    | W29  | W7   | W18  | W6   | W2   | 5.0   |
| 2   | Wesley Pasikowski    | 666    | W19  | W4   | W12  | W3   | L1   | 4.0   |
| 3   | Cameron Abrams       | 637    | W25  | W8   | W5   | L2   | W10  | 4.0   |
| 4   | Sourish Daruri       | 535    | W13  | L2   | W28  | W12  | W14  | 4.0   |
| 5   | John Schremser       | Unr    | WF   | W27  | L3   | W11  | W9   | 4.0   |
| 6   | David Parker         | 609    | W20  | D17  | W11  | L1   | W8   | 3.5   |
| 7   | T.J. Christian       | 429    | W14  | L1   | L10  | WF   | W18  | 3.0   |
| 8   | Gautham Dineshkumar  | 515    | W9   | L3   | W31  | W18  | L6   | 3.0   |
| 9   | Walter Linn          | 743    | L8   | W25  | W17  | W22  | L5   | 3.0   |
| 10  | Abhijay Das          | 720    | L22  | W24  | W7   | W19  | L3   | 3.0   |
| 11  | Luka Kelleher        | 585    | W21  | W28  | L6   | L5   | W17  | 3.0   |
| 12  | Ralph Carter         | 630    | W24  | X22  | L2   | L4   | W21  | 3.0   |
| 13  | Atul Afre            | 766    | L4   | W26  | L19  | W20  | W22  | 3.0   |
| 14  | Abhinav Rajanish     | 642    | L7   | W29  | W20  | W21  | L4   | 3.0   |
| 15  | Sahay Achar          | 541    | W31  | L18  | L21  | W30  | W19  | 3.0   |
| 16  | Jared Shattuck       | 470    | L18  | L31  | W24  | W28  | W23  | 3.0   |
| 17  | Aryan Afre           | 440    | W23  | D6   | L9   | W27  | L11  | 2.5   |
| 18  | Khushi Afre          | 667    | W16  | W15  | L1   | L8   | L7   | 2.0   |
| 19  | Elvis Xiang          | 465    | L2   | W30  | W13  | L10  | L15  | 2.0   |
| 20  | Benjamin Weatherford | 351    | L6   | W23  | L14  | L13  | W27  | 2.0   |
| 21  | Saatvik Kristam      | 144    | L11  | Bye  | W15  | L14  | L12  | 2.0   |
| 22  | Jason Wang           | 500    | W10  | F12  | W27  | L9   | L13  | 2.0   |
| 23  | Ethan Kopel          | 663    | L17  | L20  | W26  | W29  | L16  | 2.0   |
| 24  | Jason Pasikowski     | 370    | L12  | L10  | L16  | Bye  | W30  | 2.0   |
| 25  | Mason Winkel         | 398    | L3   | L9   | L30  | W26  | W29  | 2.0   |
| 26  | Rishi Chowdhury      | 103    | 1/2  | L13  | L23  | L25  | W28  | 1.5   |
| 27  | Sovereign Schoenherr | 541    | W30  | L5   | L22  | L17  | L20  | 1.0   |
| 28  | Adithya Balaji       | 106    | Bye  | L11  | L4   | L16  | L26  | 1.0   |
| 29  | Darrian Chen         | 246    | L1   | L14  | Bye  | L23  | L25  | 1.0   |
| 30  | Andrew Kolozsvary    | Unr    | L27  | L19  | W25  | L15  | L24  | 1.0   |
| 31  | Matthew Kennedy      | Unr    | L15  | W16  | L8   | LF   | ---  | 1.0   |

## Prize Winners



U2000 Section 2nd Place  
Thomas LaForge



U2000 Section 3rd Place  
Kevin Gregory



U2000 Section U1800  
2nd: Ayush Das



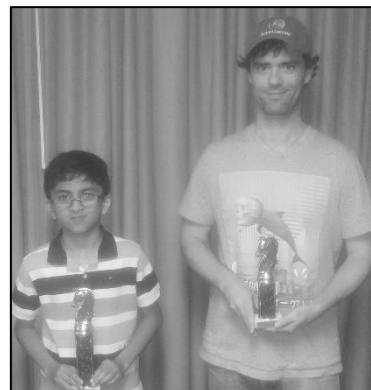
U2000 Section U1200  
2nd: Sanjana Ramesh



U2000 Section U1600

1st: Ashwin Balaji

2nd: Zachary Houghton



U2000 Section U1000

1st: Adhvaith Rajanish

2nd: Christopher Agee



U2000 Section Top Senior  
Joe Beane Jr



U800 Section 1st Place  
David Shen



U800 Section

3rd: Cameron Abrams

2nd: Wesley Pasikowski



U800 Section  
4th: Sourish Daruri / 5th: John Schremser



U800 Section U600  
1st: T.J. Christian



U800 Section U600  
1st: Benjamin Weatherford / 2nd: Saatvik Kristam



U800 Section Unrated  
1st: Andrew Kolozsvary

## Games from the 2016 Michigan Amateur Championship

**John Jones (1492)**  
**Ezekiel Houghton (1663)**  
Michigan Amateur (2)  
Lansing, May 2016  
C44

1.e4 e5 2.c4 Bc5 3.Nf3 Nc6 4.d3 d6 5.h3  
f5 6.Nc3 Nf6 7.Bg5 h6 8.Bxf6 Qxf6  
9.Nd5 Qf7 10.a3 a5 11.Be2 0-0 12.0-0 f4  
13.b4 Bd4 14.Rb1 Qg6 15.Nxd4 exd4  
16.Bg4 f3 17.b5 Bxg4 18.bxc6 Qg5  
19.Qc1 Qh4 20.Ne7+ Kh7 21.hxg4 Qxg4  
22.g3 Qh3 0-1

**Sanjana Ramesh (1066)**  
**Dale Shalifoe (1619)**  
Michigan Amateur (2)  
Lansing, May 2016  
B08

1.e4 d6 2.d4 g6 3.Nf3 Bg7 4.Nc3 Nf6  
5.Bd3 0-0 6.0-0 Nc6 7.Bf4 Bg4 8.Be2  
Nd7 9.h3 Bxf3 10.Bxf3 Nxd4 11.Re1 e5  
12.Bh2 Nc5 13.Be2 Kh8 14.Bc4 f5  
15.exf5 gxf5 16.a3 c6 17.Ba2 Rf6 18.Bg3  
Qd7 19.Kh1 f4 20.Bh2 Qf5 21.Rc1 Bh6  
22.Rb1 Rg6 23.Rg1 d5 24.f3 Nxc2  
25.Rc1 Ne3 26.Qe2 Rag8 27.b4 Nd3  
28.Rc2 Nxc2 29.Qxc2 e4 30.fxe4 dxe4  
31.Bxg8 Rxg8 32.Na2 e3 33.Rf1 e2

34.Qxe2 Qd5 35.Nc3 Qd4 36.Ne4 Re8  
37.Rd1 Rxe4 38.Qxd3 Re1+ 39.Rxe1  
Qxd3 40.Re8+ Kg7 41.Re7+ Kf6  
42.Rxb7 Qf1+ 43.Bg1 f3 44.gxf3 Qxf3+  
45.Kh2 Bf4# 0-1

**Eric Hobson Jr (1371)**  
**Brian Liu (1480)**  
Michigan Amateur (5)  
Lansing, May 2016  
C50

1.e4 e5 2.Nf3 Nc6 3.Bc4 Bc5 4.0-0 d6  
5.Nc3 Bg4 6.h3 Bh5 7.g4 Bg6 8.d3 h6  
9.Qe2 Nge7 10.Be3 Bb6 11.Rad1 0-0  
12.d4 exd4 13.Nxd4 Ne5 14.Bb3 Ba5



15.Bf4 Bxc3 16.bxc3 N7c6 17.Nxc6 Nxc6  
18.e5 Qe7 19.Rfe1 Rfe8 20.e6 f6 21.Qb5  
Nd8 22.Qe2 Kh8 23.Rd2 Bh7 24.Qe3  
Bg8 25.Rde2 c6 26.Bg3 d5 27.f4 Bh7  
28.f5 a5 29.a4 h5 30.c4 dxc4 31.Bxc4  
Qb4 32.Qb3 c5 33.Qxb4 axb4 34.e7 Nc6  
35.Bf7 Nd4 36.Rf2 Nc6 37.Bxe8 Rxe8  
38.Bd6 hgx4 39.hgx4 Kg8 40.Bxc5 Kf7  
41.Rf4 Nxe7 42.Bxe7 Rxe7 43.Rxe7+  
Kxe7 44.Rxb4 Bg8 45.Rxb7+ Kf8  
46.Rb8+ Kf7 47.Rxg8 Kxg8 48.a5 Kf7  
49.a6 Ke7 50.a7 Kd6 51.a8Q Ke5  
52.Qg8 Kd4 1-0

**Zachary Houghton (1422)**  
**Michael Aldrich (1334)**  
Michigan Amateur (5)  
Lansing, May 2016  
C34

1.e4 e5 2.f4 exf4 3.Nf3 d6 4.Bc4 g6 5.Nc3  
Bg7 6.0-0 Nf6 7.d3 0-0 8.Bxf4 Be6

9.Qe1 Nc6 10.Qh4 Qe7 11.Bg5 Ne5  
12.Nxe5 dxe5 13.Bxf6 Bxf6 14.Qxf6  
Qc5+ 15.Qf2 Qe7 16.Nd5 Qd6 17.Qh4  
a5 18.Nf6+ Kg7 19.Qxh7# 1-0

This next game was the decisive battle for the Amateur Championship. Only needing a draw to secure the title, Greg Bailey sacrifices a rook for the attack. Incredible fighting spirit.

**Philip Roe (1921)**  
**Greg Bailey (1911)**  
Michigan Amateur (5)  
Lansing, May 2016  
B11

1.e4 c6 2.Nc3 d5 3.Nf3 Bg4 4.h3 Bh5  
5.exd5 cxd5 6.Bb5+ Nc6 7.d4 a6 8.Be2  
e6 9.Bf4 Bd6 10.Ne5 Bxe2 11.Nxe2 Nge7  
12.0-0 Ng6 13.Nxg6 hxg6 14.Qd2 Bxf4  
15.Qxf4 Rh4 16.Qe3 Qf6 17.c3 0-0-0  
18.f4 Rdh8 19.Nc1 Qf5 20.Nd3 Rxh3

21.gxh3 Rxh3 22.Rf3 Qg4+ 23.Kf2  
Rh2+ 24.Ke1 Qh4+ 25.Kd1 Ne7 26.Ne1  
Nf5 27.Qg1 Rh1 28.Qf2 Qh5 29.Kd2  
Rh2 30.Ng2 Nd6 31.Kc2 Ne4 32.Qf1  
Qg4 33.Rd1 Rxg2+ 34.Kc1 b5 35.a4 Nd6  
36.axb5 axb5 37.Rf2 Rg3 38.Qh1 Rh3  
39.Qe1 Ne4 40.Rf1 Ng3 41.c4 Nxf1  
42.Qa5 Qxf4+ 43.Kb1 bxc4 44.Qa6+  
Kd7 45.Qa7+ Ke8 46.Qa4+ Ke7  
47.Qb4+ Kf6 48.Qf8 Nd2+ 49.Ka2 Qxd4  
50.Qd8+ Kf5 51.Qe7 f6 52.Re1 Ne4 0-1  
Black went on to win.

## 2017 MICHIGAN JUNIOR CHESS CHAMPIONSHIPS

March 25-26, 2017

ALL EVENTS: Oakland Center at Oakland University  
2200 N. Squirrel Rd, Rochester, MI 48309, Banquet rooms A+B, 2nd floor  
ENT&INF: **Jeff Aldrich** P.O. Box 40 Flint, MI 48501. (810) 955-7271.

e-mail: [jeffchess64@gmail.com](mailto:jeffchess64@gmail.com)

Do not send cash. Make check or money order payable to **Michigan Chess Association**

**Online registration and payment preferred: <http://www.onlineregistration.cc>**

| Event   | Junior<br>Championship   | Young<br>Junior<br>Championship  | Young<br>Junior<br>Reserve | Children's<br>Championship | Children's<br>Reserve | Young<br>Children's<br>Championship                                    | Young<br>Children's<br>Reserve | Children's<br>Sponsors     | Junior<br>Sponsors |
|---|--|--|----------------------------|----------------------------|-----------------------|--|--------------------------------|----------------------------|--------------------|
| Grade   | K-12   | K-8  | K-8 U800                   | K-5                        | K-5 U600              | K-3  | K-3 U300                       | Friend & Family            |                    |
| Date  | 3/25 - 3/26  | Sunday March 26  |                            |                            | Saturday March 25     |  |                                | Saturday                   | Sunday             |
| Register  | ALL SECTIONS. NO ON-SITE REGISTRATION – register and pay online <a href="http://www.onlineregistration.cc">http://www.onlineregistration.cc</a>  |  |                            |                            |                       |  |                                |                            |                    |
| Round<br>Times  | Sat. 10 – 2 – 6<br>Sun. 10 - 2   | FIVE ROUNDS<br>ALL COMPETITORS PLAY ALL FIVE ROUNDS.<br>9am – 11am – 1pm - 3pm - 5pm |                            |                            |                       |  |                                | 10am - 12:30pm -<br>3:30pm |                    |
| TL  | G/115;d5   | G/45;d5  |                            |                            |                       |  |                                |                            |                    |
| Entry   | \$25 Advance by 3/20/2017<br>All mailed entries must be postmarked by 3/17/2017  |  |                            |                            |                       | \$35 Advance by 3/24/2017<br>NO ON-SITE REGISTRATION FOR ALL SECTIONS. |                                |                            |                    |
|   | Online entry and payment: <a href="http://www.onlineregistration.cc">http://www.onlineregistration.cc</a>  |  |                            |                            |                       |  |                                |                            |                    |
| Memb  | Michigan Chess Association and USCF Memberships Required   |  |                            |                            |                       | MCA only   |                                | MCA & USCF                 |                    |
| Awards  | Top 5<br>Top 3 Gr 9u-12<br><u>Scholarships:</u><br>1 <sup>st</sup> \$500<br>2 <sup>nd</sup> \$250  | Top 5<br>Top 3 Gr 6u-8   | Top 5                      | Top 5<br>Top 3 Gr 4u-5     | Top 5                 | Top 5<br>Top 3 Gr Ku-3   | Top 5                          | Top 2                      |                    |
|   | <b>Junior (K-12)</b>   |  |                            |                            |                       |  |                                |                            |                    |
|   | Top in Grade 9-12 represents Michigan at the Denker Tournament of High School Champions at the U.S. Open.<br>Top Female Finisher represents Michigan at the National Girls Tournament of Champions at the U.S. Open<br>(if 2016 Michigan Women’s Champion is not in grades K-12) |  |                            |                            |                       |  |                                |                            |                    |
|   | <b>K-8</b>   |  |                            |                            |                       |  |                                |                            |                    |
| Top in K-8 Championship represents Michigan at the Barber Tournament of K-8 Champions at the U.S. Open. |  |  |                            |                            |                       |  |                                |                            |                    |

# FRENCH TARRASCH, CHISTYAKOV VARIATION

Tony Palmer

The Chistyakov Variation begins with 1.e4 e6 2.d4 d5 (French Defense) 3.Nd2 (Tarrasch) c5 4.exd5 Qxd5 bringing the queen out early but avoiding the Isolated Queen Pawn (IQP) which Black typically gets in the Open System after 4...exd5 5.dxc5. The chessgames online database shows 4...Qxd5 and 4...exd5 are played at equal frequency for Black's fourth move. After 4...Qxd5, the main line continues 5.Ngf3 (5.Bc4? Qxg2) cxd4 6.Bc4 Qd6 (here 6...Qd8 and 6...Qd7 are also playable) 7.0-0 Nf6 8.Nb3 Nc6 9.Nbxd4 Nxd4 10.Nxd4 (10.Qxd4 Qxd4 11.Nxd4 is drawish) a6 reaching this standard position:



White has two major ways to proceed: 11.Re1 gaining the half open e file while creating a retreat square for the bishop at f1, or developing other pieces first (usually Qf3 and Bg5) before centralizing the rooks with Rfe1 and Rad1. Black often plays 11...Qc7 and 12...Bd6 to attack the h2 pawn, then White may choose h2-h3 or g2-g3 meeting the threat, versus sacrificing that pawn for open lines. With both central pawns traded off early, White has more space and mobility without needing to defend any pawn center. From Black's side, 10...a6 will prevent Nb5 disrupting the 11...Qc7 and 12...Bd6 plan, also intending ...b7-b5 later, followed by ...Bb7. Like many lines in the French Defense, the queen bishop can be hard to develop. Yet the open d file and half open c file also give Black more freedom compared to other closed French positions. Sometimes Black will play 11...Bd7 followed by castling queenside for a very sharp game.

The chessgames.com database has 587 games, with these percentages for White's eleventh move: 11. Re1 (44%), 11. Bb3 (26%), 11. c3 (16%), 11. b3 (7%), 11. a4 (4%), and 11. Bd3 (2%).

## A) 11. Re1

White's most common choice by far. From a categorical perspective, this portion includes 11.Bb3 Qc7 12.Re1, while 12.Qf3 is in the next section. These first two reference games are from the 2016 Olympiad.

Almasi-Radjabov (Baku, 2016): 11.Re1 Qc7 12.Bf1 Bd6 13.g3 (logical after Bf1, intending Bg2) 0-0 14.Bg5 Be5 15.c3 Nd5 (15...h6 16. Be3 is equal per Fritz 10) 16.Bg2 h6 17.Bd2 Nf6 18.Qf3 Rd8 19.Rac1 Nd5 20 Qg4 f5 (20...Bf6!?) 21.Qe2 and White won (1-0, 59).

Nedev-Saleh Salem (Baku, 2016): 11.Re1 Qc7 12. Qe2 h6 13. c3 Bd6 14. h3 0-0 15. Bd3 b5 16. a4 b4 17. c4 (17. cxb4 Bxb4 18. Rd1 Bb7 =) Rd8 18. Nb3 Bb7 19. Be3 Bh2+ 20. Kh1 Qc6 (mate threat) 21. f3 Bc7 and Black won in short order (0-1, 26).

Almasi-Goganov (Stockholm, 2016): 11.Re1 Qc7 12.Bf1 Bc5 (rather than 12...Bd6) 13.Bg5 Bd7 14.c3 0-0-0 (opposite side castling leads to a lively game) 15.b4 Bd6 16.g3 e5 (not 16...Qxc3?? 17.Rc1) 17.Nb3 Be6 18.Qe2 Kb8 19.Na5 Bg4 20.Qe3 Bc8 21.Rab1 and White won (1-0, 44).

The next three games feature Nf5 attacking the kingside, which doesn't always work:

Azarov-Grachev (Moscow, 2016): 11.Re1 Qc7 12.Qe2 h6 13.Bd3 Bd6 14.Nf5 Bxh2+ 15.Kh1 Kf8 16. Nxd7 (16.g3!? Qc6+ 17.Kxh2 exf5 18.f3 is safer) h5 17.g3 Bxg3 18.fxd3 Qxg3 19.Nf5 Qh3+ 20.Qh2 Qxh2+ 21.Kxh2 exf5 and Black won (0-1, 36).

Shankland-Chandra (US Championship, St. Louis, 2016): 11.Re1 Qc7 12.Bf1 Bd6 13.Nf5 Bxh2+ 14.Kh1 Kf8 15.Qd4 exf5 16.Qxf6! h6 (16...gxf6? 17. Bh6+ mates) 17.Qd4 Bd6 18.Bc4 Bd7 19.b3 Qc5 20.Qh4 and White won (1-0, 63).

Laznicka-Lupulescu (Yerevan, 2014): 11.Bb3 Qc7 12.Re1 Bd6 13.Nf5 Bxh2+ 14.Kh1 0-0 15.Nxd7 Rd8 16.Qf3 Kxg7 17.Bh6+ Kg6 (the king is a fighting

piece!) 18.c3 Nh5 19.Be3 f5 20.g4 Nf6 21.gxf5+ exf5 and Black won (0-1, 31).

## B) 11. Bb3

A waiting move of sorts, allowing White to choose between 12.Re1 or 12.Qf3, but also safeguarding the bishop which would get hit after 11...Qc7. One frequent continuation is 11.Bb3 Qc7 12.Qf3 (preventing 12...b5 and 13...Bb7) Bd6 13.h3 0-0 14.Bg5 Nd7 15.c3 which scores very well for White.

Pogonina-Mednikova (St. Petersburg, 2009): 11.Bb3 Qc7 12.Qf3 Bd6 13.h3 0-0 14.Bg5 Be5 15.Rad1 Qc5 16.Be3 Qe7 17.Rfe1 (White has a harmonious development) Nd7 (17...h6) 18.c3 Qf6 (18...Re8 19.Bc2) 19.Qe2 Nc5 20.Bc2 g6 (20...Nd7 21.Nf3 and White is better) 21.Nf3 Nd7 22.Bg5 Qg7 23.Nxe5 Nxe5 24.Be7 Nc6 (24...Re8? 25.Qxe5 Qxe5 26.Rxe5 Rxe7 27.Rd8+ Kg7 28.Rc5 ) 25.Bxf8 Qxf8 26.Be4 and White won (1-0, 33).

Motycakova-Hojjatova (Mamaia, 2016): 11.Bb3 Qc7 12.Qf3 Bd6 13.h3 0-0 14.Bg5 Nd7 15.c3 b5!? 16.Rfe1 (16.Qxa8 Bb7 17.Qxf8+ is interesting) Bb7 17.Qh5 Ne5 18.Bc2 Ng6 19.Rad1 Rae8 and Black won (0-1, 51).

Berelovitsch-Schenk (Muelheim, 2016): 11.Bb3 Qc7 12.Qf3 Bd6 13.h3 0-0 14.Bg5 Nd7 15.c3 Ne5 16.Qh5 Bd7 17.Rad1 Ng6 18.Bc2 Rae8 19.Rfe1 Bc8 20.Nf3 and White won (1-0, 30).

An example of 11 ... Bd7 followed by castling queenside.

Kalka-Parkhov (Jerusalem, 2015): 11.Bb3 Bd7 12.c3 Qc7 13.Qf3 Bd6 14.h3 0-0-0 15.Bg5 Qc5 16.Be3 Qe5 17.g3 Qe4 18.Qxe4 Nxe4 19.Bc2 Nf6 and drawn (1/2-1/2, 38).

## C) 11. c3

Another waiting move which defends the Nd4, but this line will transpose except for 11.c3 Qc7 12.Qe2 which has independent significance.

Johannson-Gueler (Reykjavik, 2014): 11.c3 Qc7 12.Qe2 Bd6 13.h3 0-0 14.Bb3 b6 15.Bg5 Bb7 16.Bxf6 gxf6 17.Qh5 (17.Bd1!?) Kh8 18.Bd1 (here 18.Bc2 is better) Rg8 19.Bf3 Rg5 20.Qh6? (20.Qh4 Rag8 21.Bxb7 holds for now) Rg6 21.Qe3 Rag8 (Black doubles on the g file with

tempo) 22.Bxb7 Qxb7 23.g4 Rxc4+! 0-1 (24.hxc4 Rxc4+ wins the queen).

D) 11. b3

White defends the Bc4 and plans to develop the other bishop on the long diagonal.

Geller-Kindermann (Dortmund, 1989): 11.b3 Qc7 12.Qe2 Bc5 13.Nf5 0-0 14.Nxc7 (White sacrifices a piece) Kxc7 15.Bb2 e5 16.Bxe5 Bd6 17.Bb2 Bxh2+ 18.Kh1 Bf4 19.Qh5 h6 20.Rae1 Qd7? (20...Rb8 21.g3 Bd2 +/-) 21.Re3! Qg4 22.Qxc4+ Bxc4 23.Re4 (Skewer) 1-0.

Nuber-Jianu (Yerevan, 2014): 11.b3 Be7 12.Bb2 0-0 13.Qe2 e5 (consider 13...b5) 14.Nf3 (14.Rae1 is better) e4 15.Ng5? (15.Ne5 =) Ng4 16.f4 (16.g3 Bxc5) Bxc5 17.Rad1 (17.fxg5? Qxh2#) Qh6 18.h3

Bxf4 19.Qxe4 Be3+ and Black won (0-1, 22).

E) 11. a4

White inhibits any potential ...b7-b5 advance by Black.

J. Polgar-Jianu (Yerevan, 2014): 11.a4 Qc7 12.Qe2 Bd6 13.h3 0-0 14.Bg5 Ne4 15.Bh4 Nd2 (a novel way to trade down) 16.Qxd2 Qxc4 17.Rfd1 (so the Ra1 supports the Pa4) Re8 18.b3 Qc5 19.Ne2 Bf8 20.a5 e5 and White won (1-0, 46).

F) 11. Bd3

A rare option, playing for the trap 11 ... Qxd4?! 12. Bb5+ winning the queen for two pieces, but also redeploying the bishop on the more useful b1-h7 diagonal to attack Black's kingside.

Kveinys-Rohrmueller (Cappelle-la-Grande, 2004): 11.Bd3 Qc7 12.Qe2 Bd6 13.Kh1 0-0 14.Bg5 Bf4 (better is 14...Nd5 15.Qe4 g6 16.Rad1) 15.Bxf6 gxf6 16.Qh5 f5 17.Nf3 f6 18.Rfe1 Bd7? (18...b5!?) 19.Bxf5! 1-0 (19...exf5 20.Re7; 19...Be8 20.Bxe6+).

The Chistyakov Variation leads to an open board where White has a spatial advantage, while Black's light squared bishop can be hard to develop, but the unbalanced position gives chances for both sides. Good Luck!

## REFERENCES

1. chessgames.com
2. Fritz 10

# 2016 Junior High Team Championships Pictures

February 13, 2016

Coverage of this event from the Summer 2016 magazine did not include pictures because I could not find them. Turns out that I did not take them for this event. Special thanks to **Kwame Shabu** for providing these pictures.

## 2016 Michigan Junior High Team Individual Medal Winners

Gold = 5.0; Silver = 4.0-4.5; Bronze = 3.5



## 2016 Michigan Junior High Team K-9 Championship Prizewinners



Champion: University Prep MS A



5th Place: University Prep MS B



2nd Place: Roeper Birmingham



6th Place: Chrysler Elementary



3rd Place: Bates Academy A



7th Place: Roeper Bloomfield Hills



4th Place: Boulan Park MS



8th Place: Cornerstone Nevada K-9C



9th Place: Clague MS

2016 Michigan Junior High Team K-9 U700  
Reserve Prizewinners



Co-Champion: Sampson-Webber



Co-Champion: Bates Academy B1



3rd Place: Milani Homeschool



6th Place: Schuchard Knights A



7th Place: University Prep MS D

**THEME = BASIC MATES**

- 1) 1.Qd7 (confining) Ka8 2.Kb6 (not 2.Qc7?? Stalemate) Kb8 3.Qb7#/Qd8#/Qe8#.
- 2) 1.Rh7+ Kb8 2.Kc6! Ka8 (2...Kc8 3.Rh8#) 3.Kb6 Kb8 4.Rh8#.
- 3) 1.Ra6 Kh7 2.Kf7 Kh8 3.Rh6#. All possible Rook moves are Mate in Three, provided your second move is to the sixth rank, besides 1.Ra7?? Stalemate.
- 4) 1.Ra6+ Kg7 2.Rb7+ Kf8 3.Ra8#. Rolling Rooks!
- 5) 1.Be5+ Ka8 2.Bd5#.
- 6) 1.Nc7+ Kb8 2.Na6+ Ka8 3.Bc6#.

# Michigan's Representatives at the USCF Invitational Tournaments - 2016

## Denker Tournament of High School Champions: *Safal Bora*

The 2016 Denker Tournament of High School Champions was held in Indianapolis at the Marriot East Hotel from July 30<sup>th</sup> to August 2<sup>nd</sup>. It was a scholastic tournament that brought together 1 representative from each state to compete for the crown of being a high school champion. I was the Michigan representative and the top seed at the beginning of the tournament. Not only did I have high hopes of winning the Denker but Michigan also had a high chance to win the state competition from all three events (Denker, Barber, and NGIT) combined.

The opening ceremony was very well coordinated as all the speeches were very influential in helping to increase the popularity of chess throughout America. In fact, one of the speakers challenged each and every single participant to impact 100 different kids' lives through chess. Each participant also received a state flag and many other helpful chess tools like magazines and CDs. Lastly, the opening ceremony ended with a photo shoot of all the participants.

As soon as the opening ceremony ended, the first round started and I was on board 1 playing against Justin Lohr who had a 2185 rating. I got a good position out of the opening with black but then simply miscalculated a line where I thought I was winning a piece when actually I had just miscounted the pieces. After this heartbreaking loss, I had to refocus and leave my hopes of winning the tournament behind. I won my next two games in rather convincing style as I played rather easier opponents. Here is one of those convincing wins from round 2:

**Safal Bora (2489)**

**Travis Miller (1936)**

Denker Tournament of High School  
Champions (2)

Indianapolis IN, July 2016

English: Neo-Catalan Declined, A14

*Notes by Safal Bora*

**1.Nf3 d5 2.g3 Nf6 3.Bg2 e6 4.0-0 Be7  
5.c4 c5 6.cxd5 exd5 7.d4 0-0**

The Tarrasch Defense.

**8.dxc5**

I tried to use this as a surprise weapon because I do indeed have a previous game in the main line given. 8.Nc3 Nc6 9.Bg5 c4 10.Ne5 Be6 This is the main line in this system where White has many options including b3, Nxc6, e3, and f4.

**8...Bxc5 9.a3 Nc6 10.b4 Bb6 11.Bb2 Re8  
12.Nc3 Bg4**

Normal development so far.

**13.Na4**

Trying to trade the strong bishop.

**13...Qe7**

13...Bc7 This is clearly the most critical reply. It keeps the bishop and the tension in the position. Here is a model game in this line. 14.Nc5 b6 15.Nd3 Bxf3 16.exf3 Ne5 17.f4 Ned7 18.Qb3 Nf8 19.Ne5 Ng6 20.Nc6 Qd7 21.Rac1 Ne4 22.Rfd1 Bxf4 23.Rxd5 Qc7 24.gxf4 Nxf4 25.Bxe4 Rxe4 26.Rg5 Ne2+ 27.Kf1 Nxc1 28.Qc3 f6 29.Qxf6 Re1+ 30.Kxe1 Nd3+ 31.Kf1 1-0 Khairullin,I (2632)-Gabrielian,A (2589)/Khanty-Mansiisk RUS 2012/The Week in Chess 944

**14.Nxb6 axb6 15.e3±**

White has the bishop pair and black has many pawn islands and weaknesses in his position. The position is clearly favorable to White and I was only playing for two results.

**15...Rad8 16.Rc1 Ne4 17.Qc2 Rc8  
18.Qd3 Red8 19.Rfe1**

A prophalactic move. My point was to play 19.Qb5 when Black goes 19...Bxf3 20.Bxf3 Nd2 and I lose an exchange.

**19...Qd7?**

19...f6 This was a better move avoiding any funny business on the e5 square.

**20.Nd2**

20...Ng5 21.b5 Ne7 Probably the best try to muddy the waters. 22.Qd4 f6 23.Qxb6 Nh3+ 24.Bxh3 Bxh3 25.a4 Nf5 26.f3 Rxc1 27.Rxc1 d4 28.e4 Qd6 29.Qxd6

Nxd6 30.g4 Nf7 31.Kf2 h5 32.Kg3 hxg4 33.fxg4 Ng5 34.a5 d3 35.a6 bxa6 36.bxa6 Rd6 37.a7 Ra6 38.Ra1

**20...Ng5 21.b5 Ne7 22.Qd4 f6 23.Qxb6  
Nh3+ 24.Bxh3 Bxh3**

After the dust has settled, White stands a clear pawn up but has a difficulty converting because of his weak light squares around his king and the drawish tendencies of opposite color bishops.

**25.a4 Nf5 26.f3 Rxc1?!**

26...Nd6 This move would have made White's task of proving a clear advantage much tougher. 27.Rc5 Rxc5 28.Qxc5 Be6 29.Rc1 Rc8 30.Qd4 Rxc1+ 31.Bxc1 A position where Black has high chances to draw if he can trade all the pieces because of the opposite color bishops.

**27.Rxc1 d4**

A desperate try.

**28.e4 Qd6 29.Qxd6**

29.Qc7 A more accurate way to trade the queens, forcing Black to help activate White's rooks on the 7th rank.

**29...Nxd6 30.g4!**

Trapping the bishop on h3.

**30...Nf7?!**

30...h5 The only way that Black can keep his bishop active. 31.gxh5 Ra8 32.Ra1 d3 33.Kf2 Kh7 34.Ke3 Kh6 35.Kxd3 Kxh5+- White should win this position being two pawns up but his task is not at all simple.

**31.Kf2! h5 32.Kg3 hxg4 33.fxg4 Ng5**

In this position White can do whatever he wants on the queenside without having to worry about Black's counterplay because both his minor pieces are tied up.

**34.a5 d3 35.a6 bxa6 36.bxa6 Rd6 37.a7  
Ra6 38.Ra1 1-0**

A clean win and one of the few games I could be proud of from this horrible tournament.

After these two wins I felt I could comeback in the tournament. I was feeling great and ready to fight once again until this happened:

**Safal Bora (2489)****Bovey Liu (2279)**

Denker Tournament of High School Champions (4),

Indianapolis IN, August 2016

Reti: King's Indian Attack French, A08

*Notes by Safal Bora*

**1.Nf3 Nf6 2.g3 e6 3.Bg2 d5 4.0-0 Be7 5.d3**

Deviating from my other game. Here he was expecting a Catalan so I tried to trick him by playing a line against the French called the Kings Indian Attack. I thought this was a good idea because against e4 he doesn't play the French.

**5...0-0 6.Nbd2 c5 7.e4 Nc6**

This position is a transposition from the Kings Indian Attack via 1.e4 e6 2.d3 d5 3.Nd2 Nf6 4.Ngf3 c5 5.g3 Nc6 6.Bg2 Be7 7.0-0 0-0

**8.Re1 b6?!**

Black's idea is to have counterplay on the queenside with pushing his b- and a-pawns. 8...b5 was a much better reply.

**9.e5 Nd7 10.Nf1 Qc7 11.Bf4 Ba6 12.h4 b5**

Now can be seen that 8...b6 was clearly a waste of time.

**13.N1h2 b4 14.h5 Rfc8 15.Ng4**

At this point I had made most of my moves by hand as this is the general plan in the Kings Indian Attack. Now my idea is to play Bg5 and trade that bad bishop.

**15...Qd8**

Stopping Bg5

**16.Qc1 Nd4**

I can't go Bg5 because of Nxf3+ and then Bxg5 losing a bishop. I also don't want to take the knight on d4 because after cxd4 my c2 pawn is very weak.

**17.h6 g6 18.Ngh2!**

Now he can't stop Bg5 as after Nxf3 I can take back with my other knight supporting the bishop.

**18...Rab8 19.Bf1**

My idea was to take knight on d4 and then go Nf3 to try to pick up the loose pawn on d4. The problem with doing this before is after Nf3 he has the tactic Bxd3 due to pin on my queen. 19.Bg5 Bxg5 20.Nxg5 Nxc2 21.Nxf7 Kxf7 22.Qxc2 Qg5 This is the position I had foreseen on move 19 and thought that I would just lose my h6 pawn. However, here I had an amazing move. (22...Kg8 This is probably his best move. 23.Qd2 With the idea of Ng4 and penetrating on the dark squares. White has a slight edge here.) 23.Bxd5! exd5 24.e6++-

**19...Rc6 20.Be3**

I deviate from my original plan which was not a smart idea. I miscalculated something in the line given. 20.Nxd4 cxd4 21.Nf3 Qb6 22.Bg5 Bxg5 23.Nxg5 Rbc8 24.Qf4 And black is not in time to take c2 as I am delivering mate.

**20...Nxf3+ 21.Nxf3 c4 22.d4 c3 23.b3 Bxf1 24.Kxf1 a5 25.Bg5 Bxg5 26.Nxg5 Qe7?!**

Allowing me to play a very strong move to close the position. 26...a4 27.Qf4 Qe7 28.Re3 Ra6 29.Rc1 axb3 30.axb3 Ra2 31.Rf3 Rf8 This position is equal because neither side has any way of making progress.

**27.Qf4**

27.a4! I should have seized my chance to shut down his counterplay here. I was scared of bxa3 and him opening up the position but it does not work out tactically. 27...bxa3 28.Rxa3 Ra6 29.Qf4! This is the point. The Queen gets out of the way and allows the other rook to swing over to a1 if Black doesn't take immediate action.

29...f6 Although not the best, this move is probably the best practical try to complicate the position. (29...Nb6 30.Re1 Rba8 31.Nf3± Black has a lot of weaknesses that White will try to exploit.)

30.exf6 Qxa3 31.f7+ Kh8 32.Nxe6 In this position White has the amazing idea of going Qxb8+ Nxb8 and Nc5 where Black has no way to avoid either Re8 or f8=Q with checkmate. 32...Rxe6 (32...Qd6 This is his best move. 33.Nc5 Qxf4 34.gxf4 Nf8 35.Nxa6 Rb7 36.Re8 Rxf7 37.Nc7 Kg8 38.Ne6 Rf6 39.Nxf8 Rxf8 40.Rxf8+ Kxf8 41.Ke2 Kf7 42.Kf3 Ke6 43.Kg4 Kf6 44.f3 Ke6 45.Kg5 Kf7 46.f5 gxf5 47.Kxf5 With a winning king and pawn endgame.; 32...Raa8 33.Nc5+- This is the other idea in this position. It tries to deflect the knight so that White can mate with his queen on either the f6 or e5 square.) 33.Rxe6 Qf8 34.Re5!! This is better than 34.Rd6 because now on g5 White can take with the rook and simply be winning.

Anyways, the point in this position is very simple. White wants to take the d5 pawn and attack the knight that is guarding against mate. Black has no defense.(34.Rd6 This seems more natural but is a harder win. 34...g5 35.Qxg5 Qxf7 36.Rxd7 Qxd7 37.Qe5+ Kg8 38.Qxb8+ Kf7+-)

**27...Rf8 28.Re3**

28.a4 Here too the move is good but not as good as Black can threaten f6 in some lines.

**28...a4 29.Rae1 axb3 30.axb3 Ra6 31.Kg2 Ra2**

From this point on I started to lose the thread of the position.

**32.R3e2**

32.Rc1 This is the move I should have played accepting the draw with the next move of Rf3 when neither side can do anything.

**32...Rfa8 33.Qg4 Nb8!**

A move I completely missed. Rerouting the knight to a more powerful position.

**34.f4 Nc6 35.Nf3 Rb2 36.Rd1?**

36.Kf2 Raa2 37.Rc1 Na5 38.Ng1 This is the only way to hold the position. But Black has everything to play for as my pieces are very inactive.

**36...Raa2 37.Ne1 Na5 38.Rf2 Nxb3 39.f5** Desperate.

**39...exf5 40.Rxf5 Nd2 41.Rf6 Nc4 42.Rd3 b3 43.Rdf3 bxc2 44.Qc8+ Qf8 45.Qxf8+ Kxf8 46.Rxf7+ Ke8**

The rest of the game is just a matter of technique.

**47.Rf8+ Kd7 48.R3f7+ Kc6 49.Rf6+ Kb5 50.Rb8+ Ka4 51.Ra8+ Na5 52.Nxc2 Rxc2+ 53.Kh3 Rh2+ 54.Kg4 Kb5 55.Rb8+ Kc4 56.Rc8+ Kxd4 57.e6 c2 58.Rf4+ 0-1**

After this disappointing loss, I was completely disgusted with myself and it caused me to play awful in the next two games. Even though I drew one and won the other, it was not the quality of game that I would have liked to play. Especially in my round 5 game, where I had a clearly better position and I could not calculate simple variations. Overall, my result was 3.5/6 and I finished in 13th place.

Before writing this article, I began to think about why I played so poorly. After thinking through this question, I realized that it was not only a matter of chess but also psychology. I did not take the lower-rated opponents as seriously as I should have, especially at scholastic tournaments and I did not calculate as intensively as I normally do. I think that every tournament is a learning experience and I will take everything I learned at this tournament and try to improve my play in the future. Lastly, I would like to thank the Michigan Chess Association for providing me with the stipend to help finance the trip to Indianapolis as they are always supporting and caring for scholastic chess!



## Barber Tournament of K-8 Champions: *Ben Li*

It's an honor to represent Michigan in the Barber Tournament of K-8 Champions. This year it took place in Marriott Indianapolis East, along with the Denker Tournament, the National Girls Tournament, and the U.S. Open.

In the first round I was paired against a kid rated about 1800. He was not well prepared for the opening and I ended up winning quickly.

The second game was terrible for me. I was paired against Balaji Daggupati, a kid from Northern California. This was the first time I played this opening over the board. Although I have prepared this line, I forgot a key move and let my opponent have a strong attack on the king side.

**Balaji Daggupati (2113)**

**Ben Li (2376)**

Barber Tournament of K-8 Champions (2)  
Indianapolis IN, August 2016  
Sicilian Najdorf: English Attack, B90

*Notes by Ben Li*

**1.e4 c5 2.Nf3 d6 3.d4 cxd4 4.Nxd4 Nf6 5.Nc3 a6 6.Be3 e5 7.Nb3 Be6 8.f4!**

An interesting variation chosen by my opponent. I was expecting him to play f3.  
**8...exf4 9.Bxf4 Nc6 10.Qe2 Be7 11.h3 Qc7?!**

I had forgotten my preparation here. Nd7 is the correct move.

**12.0-0-0 0-0 13.g4 Ne5 14.Bxe5**

I guess my opponent didn't want me to play Nfd7, with a strong grip on the e5 square.

**14...dxe5 15.Nd5 Bxd5 16.exd5 Ne8?**

Returning the favor. Now black had too many things to worry about, like the knight on e8, pawn on d5, and the kingside attack.

**17.Nd2 Qa5?!**

The pawn should not be taken. Taking it just gave white a lot of tempos and a kingside attack.

**18.Kb1 Qxd5 19.Bg2 Qe6 20.Nc4 Bf6 21.Bd5 Qe7 22.h4 g6 23.h5 Nc7 24.hxg6 hxg6 25.Nb6 Rad8 26.Qh2 Rfe8 27.Qh7+ Kf8 28.Bc4 e4 29.Rdf1 Ne6 30.Nd5 Rxd5 31.Bxd5**

31...Rd8 was only move, but that was lost too.

**31...Ng5 32.Qh6+ Bg7 33.Qxg5 Qxg5 34.Rxf7+ 1-0**

In the third round, I was paired against another lower rated kid from Arizona. He

played a line in the Budapest Gambit which I wasn't really familiar with, but I didn't panic and simply controlled the center and developed. Even though he had a small advantage in the middle game, he did not play well and eventually blundered, letting me win.

**Ben Li (2376)**

**Peter Schillinger (1810)**

Barber Tournament of K-8 Champions (4)  
Indianapolis IN, August 2016  
Budapest Defense, A51

*Notes by Ben Li*

**1.d4 Nf6 2.c4 e5 3.dxe5 Ng4 4.Bf4 g5!?**

An interesting move by my opponent. I didn't know any theory of this line, so I just decided to play normal and develop.

**5.Bg3 Bg7 6.Nf3 Nc6 7.Nc3 Ngxe5 8.Nxe5 Nxe5 9.e4 d6 10.Be2 Be6 11.0-0?!**

This gave him a chance to attack, which he did not catch.

**11...Qd7 12.Nd5 c6 13.Ne3 0-0-0 14.Qa4 Kb8 15.f3 h5 16.Bf2 c5 17.Qa3**

I didn't want to trade queens, as I wouldn't have any counter play.

**17...Nc6! 18.Rab1**

Trying to make b4 work.

**18...f5??**

A big positional mistake, as it freed up all of my pieces to attack the king.

**19.exf5 Bxf5 20.Nxf5 Qxf5 21.Bd3 Qd7 22.Be4 Bd4?!**

Probably missing my next moves.

**23.Bxd4 Nxd4 24.b4!**

Black had no defense.

**25...b6 25.bxc5 dxc5 26.Qxc5 Qd6 27.Qxg5**

More pawns were falling.

**27...Ne2+ 28.Kh1 Nf4 29.g3 Ne2+ 30.c5 Qd4 31.cxb6 axb6 32.Qb5 h4**

A nice desperation move, which made me think for a few minutes.

**33.gxh4! Rxh4 34.Qxe2 Rdh8 35.Rf2 Qd6 36.a4 Ka7 37.a5 bxa5 38.Rb7+ Ka8 39.Rd7+ 1-0**

In the fourth round, I was paired against Albert Liang from Georgia. In this game, he tried to hold me to a draw as white. His defense was really hard to break, and the game went into the ending with time trouble on both sides. The time issue caused him to blunder an exchange, allowing me to win the game.

The fifth round was not a great round for me either. I was paired against Emily Nguyen as black. I needed a win to have chances to get the first place. I tried a new opening and unfortunately it did not work

out, allowing her to secure an advantage in the early middle game. I spent a lot of time, and eventually traded my queen with two pieces. However, I had the initiative: a passed pawn, and control of the only open file. My opponent had to find a way to give a perpetual check, and the game ended up with a draw.

The sixth round was quite unfortunate for my opponent. He was quickly down a piece after I started attacking, and I won shortly.

**Ben Li (2376)**

**Max Lu (2242)**

Barber Tournament of K-8 Champions (6)  
Indianapolis, August 2016  
Alekhine: Anti-Gruenfeld Leko Gambit, D70

*Notes by Ben Li*

**1.d4 Nf6 2.c4 g6 3.f3 e5**

Leko Gambit of the Anti-Gruenfeld.

**4.dxe5 Nh5 5.Nh3**

Knight on the rim! Well, this move was very useful, as it supported the move Bg5 and maybe even f4. In the game, this Knight actually proved decisive!

**5...Nc6 6.Bg5 Be7 7.Bxe7 Qxe7 8.Nc3 0-0 9.Qd2?!**

9.g4 first was better. 9...Ng7 10.Nd5 Qxe5 11.Qd2 Ne7 12.f4 Qd6 13.e4+=

**9...Qxe5?!**

Now he had the option of Nxe5, but he missed it. 9...Nxe5 10.e4 d6 11.Nf2 Be6 12.b3 Qf6 13.0-0-0. Black had a good position.

**10.g4 Ng7 11.0-0-0 d6 12.Nf4**

White is slowly getting a bigger and bigger positional advantage.

**12...Ne6 13.Nfd5 f5 14.f4 Qg7 15.gxf5 Rxf5 16.Bh3 Rf8 17.f5 Ned4 18.f6 Qf7**

8...Rxf6 was better. My opponent was forced to sac the rook eventually, but here was the best place to do so.

**19.Bxc8 Raxc8 20.Ne7+ Nxe7? 21.fxe7 Nb3+ 22.axb3 Qxe7**

Now Black was down a piece.

**23.h4 Rf5 24.h5 g5 25.e4 Re5 26.Rdf1 c6 27.Rh3 b5 28.Rd3 Rd8 29.cxb5 cxb5 30.Nd5 Qb7 31.Qf2 b4 32.Rf3 Qg7 33.Rf7 1-0**

Overall this was a great learning experience for me, and I thank my parents for encouraging me to keep going and appreciate MCA for sponsoring my trip.



## National Girls Tournament Of Champions: *Sasha Konovalenko*

*Pictures Courtesy of Alex Konovalenko*



The 2016 National Girl's Tournament of Champions was held in Indianapolis, Indiana, spanning from July 30th to August 2nd. Along with the Barber, Denker, and U.S. Open, the NGTOC took place in the Indianapolis Marriott East Hotel. Many players (including myself) stayed in nearby hotels, all about a 2 minute walk from the center. After a tiring drive that ended quite late the night before the tournament, my hopes were to breeze through check-ins and sleep. But the darkness and obscure entrance location definitely came out to be an interesting hunt.

The next day participants of the Barber, Denker, and NGTOC paraded through the opening ceremony with their state flags which would later be exchanged for a golden medallion. It was fortunate that I knew the Michigan state flag, or I might have ended up receiving the Pennsylvania flag from a TD. As the players were lined up to be organized by tournament, some of us laughed at how very few people could

tell what state we were from depending on our flag (unless the flag has the state name on it). The annual presentation filled with introductions was followed by group pictures, none that could be called particularly fun. Afterwards, everyone was dismissed to eat dinner and prepare for the upcoming 1st round.

Unlike the other Michigan representatives, I was not the top seed in my group, but high enough to get me a low rated first opponent. Though the game had a few stumbles on my part (which took some time to fix) the game still ended up in a victory. My second opponent was much stronger, as we competed to see who would end up better through the Benoni. A small blunder led to her losing a pawn, but the game was yet to end. Missing an exchange leading to a large advantage, I eventually cracked under time pressure, and my blunders led to my loss.

Before the 3rd round, the tournament staff hosted a pizza party for the players in order for them to get to know each other. None of the girls really knew each other, but after some shared confusion over the tech problems and jokes, we started to talk. The hour flew by as I met potential opponents and made new friends. Things across the country are very different, even if just 1 state away.

The 3rd round was a quick win, where my knowledge of the Sicilian Dragon was greater than my opponent's, and she couldn't hold off an attack. My next opponent in Round 4 was slightly higher rated, but rating doesn't determine strength, as she blundered a pawn in the middle-game. An error on my part led to a rook and pawn endgame, where the extra pawn wasn't enough to win. Round 5 held an interesting surprise, wielding an aggressive opponent who wouldn't back down from an attack. Missing a winning combination (leading to promotion), I ended up losing a pawn and desperately trying for a draw. This game time was on my side, and a forced draw was achieved because of my opponent's time pressure. The last game I was paired with a 1700, and I got out of the opening with an uncomfortable position. After some maneuvering and rearranging of pieces, I found a tactic to win a pawn. Some bad trades for my opponent resulted in active pieces for me, and once a pawn-endgame was reached, she could do nothing to save the position.

Overall, the experience was really cool. I met up with friends from other states and made new ones. I got to challenge myself with some strong opponents and practiced my opening preparation. The Michigan team finished in 7th place, and all of the representatives were crucial to the final result. Though I know I could've gotten a better result, ending the tournament with 4 points out of 6, the games showed me what I need to work on and what I could do to beat everyone next time. The tournament was a lot of fun and I would love to come back again. I would like to thank the MCA for the stipend and helping me play in the NGTOC, and my family for cheering me on!

**Julia Sevilla (2105)**  
**Sasha Konovalenko (1833)**  
National Girls Tournament Of  
Champions (2)  
Indianapolis IN, August 2016  
Benoni: Fianchetto, A63

*Notes by Sasha Konovalenko*

**1.d4 Nf6 2.c4 c5 3.d5 e6 4.Nc3 exd5 5.cxd5 d6 6.Nf3 g6 7.g3 Bg7 8.Bg2 0-0 9.0-0 a6**

The Modern Benoni - all part of my preparation.

**10.a4 Nbd7 11.Bf4 Qe7 12.Qd2 Re8 13.Bh6 Ne5 14.Nxe5 Bxh6 15.Qxh6 Qxe5 16.a5 Bf5 17.Ra4 Ng4**

Rather than needlessly attacking her queen, I should have focused on her weak b-pawn, by Rab8, and b6, opening the queenside. 17...Rab8 18.Qd2 Bd7 (18...b5 19.axb6 Rxb6 20.Rfa1 Reb8 21.R1a2 Bc8 22.h3) 19.Ra3 Qd4 20.Qc1 Qb4 21.e3 b5 22.axb6 Qxb6 23.Qa1

**18.Qh4 Nf6**

18...h5 While a more active way to defend the knight and gain space, h5 does create many more weaknesses in my position for my opponent to attack. 19.h3 Nf6 20.Qg5 **a)** 20.g4 hxg4 21.hxg4 Bc2 22.Ra3 Kg7 23.g5 Nh5; **b)** 20.e4 Bd7 21.f4 Qe7 22.e5 (22.Raa1) 22...Bxa4 (22...dxe5 23.fxe5 Bxa4 24.Rxf6 Bc2 25.d6 Qd8 (25...Qxe5)) 23.exf6 Qe3+ 24.Kh2 Bd7 25.Qg5 Kh7 26.g4; 20...Bc2

**19.e4 Bd7 20.f4 Qe7 21.Raa1 Ng4 22.Qxe7 Rxe7 23.Rae1 Rae8**

My opponent's biggest threat was to push the e-pawn, which would allow her to create a passed d-pawn. 23...f6 24.h3 Nh6 25.e5 (25.g4 g5 (25...Nf7) 26.e5) 25...fxe5 26.fxe5 Rxe5 27.Rxe5 dxe5 28.Ne4 Bb5 29.Rd1 (29.Rf6 Nf5 30.Rb6); 23...Bb5 24.Rf3 f6 25.h3 Nh6 26.e5 Nf5 27.e6 Nd4 28.Rf2 f5 The position would be difficult

to hold for black, but because of white's blockaded pawn, white would have a hard time finding ways to break through the position.

### 24.h3 Nh6 25.Rf3

25.e5 Opening the file for the d-pawn  
25...f5 (25...dxe5 26.d6 Re6 27.fxe5 Rxe5  
28.Rxe5 Rxe5 29.Ne4 Bf5 30.Rxf5) 26.e6  
Bb5 27.Nxb5 axb5

### 25...Nf5 26.Rd3 Nd4

26...c4 27.Rf3 Nd4 28.Rf2 f6 preventing e5

### 27.Rd2

A blunder, but she was short on time and searching for something to play.

### 27...Bxh3 28.b4

Can't take on h3 or else Nf3+ winning the exchange

### 28...Bxg2 29.Kxg2 Nb3 30.Rb2 c4

30...cxb4 31.Rxb3 bxc3 32.Rxc3 Rxe4  
33.Rxe4 Rxe4 34.Rb3 (34.Rc8+ Kg7  
35.Rd8 Ra4 36.Rxd6 Rxa5 37.Kf3 Rb5  
38.Rd8 a5 39.d6 Rd5 40.Ra8 Rxd6  
41.Rxa5 Rb6 42.g4 Rb1 43.g5 b5 44.Ke4  
h5 45.gxh6+ Kxh6 46.Kf3 Kg7 47.Kg4 b4  
48.Rb5 b3 49.Kf3 b2 50.Kg2 f5 51.Rb7+  
Kf8 52.Rb8+ Ke7 53.Rb6 g5 54.fxg5 f4  
55.g6 f3+ 56.Kf2 Rh1) 34...Rd4 35.Rxb7  
Rxd5 36.Rb6 Rxa5 37.Rxd6 2 extra pawns  
would've secured black's chances,  
especially with a passed a-pawn.

31.Rbe2 Nd4 32.Rd2 Nb5 33.Nxb5 axb5  
34.Rde2 f6 35.Kf3 Kf7 36.g4 Kg7  
37.Ra1 Ra8 38.Rea2 Rc7 39.Ke3 Ra6  
40.Kd4 Ra8 41.Rh1 Kg8 42.Rg2 Re8  
43.g5 Rce7 44.Re1 fxg5 45.Rxg5 Rc8  
46.f5 Re5 47.Rg3 c3 48.fxg6 c2

48...Rc4+ 49.Kd3 h5 Last chance to play  
for the win

49.gxh7+ Kh8 50.Rg8+ Rxg8  
51.hxg8Q+ Kxg8 52.Rc1 Kf7 53.Rxc2  
Re7 54.Rc8 Rd7 55.Rh8 Kg7 56.Re8  
Kf7 57.Re6 Rc7 58.Rxd6 Rc4+ 59.Ke5  
Ke7 60.Rb6 Rxb4 61.Rxb7+ Kd8 62.a6  
Kc8 63.Rh7 Ra4 64.a7 b4 65.a8Q+ Rxa8  
66.Rh8+ Kb7 67.Rxa8 Kxa8 68.d6 Kb7  
69.Kd4 Kc6 70.e5 1-0



### Thanu Avirneni

### Konovalenko, Sasha [A31]

National Girls Tournament Of  
Champions (2)

Indianapolis IN, August 2016

English: Symmetrical Benoni, A31

### Notes by Sasha Konovalenko

1.d4 Nf6 2.c4 c5 3.Nf3 cxd4 4.Nxd4 Nc6  
5.g3 g6 6.Bg2 Bg7 7.e3 0-0 8.0-0 Nxd4  
9.exd4 d5 10.Na3 dxc4 11.Nxc4 Be6  
12.Ne3 Qd7 13.d5 Bh3 14.Qb3 Bxg2  
15.Kxg2 Rfd8 16.Rd1 Rac8

16...Bh6; 16...b6 protect the pawn to  
attack her weak d-pawn

### 17.Kg1

17.Bd2 Nxd5 18.Nxd5 Qxd5+ 19.Qxd5  
Rxd5 20.Be3 Rcd8 21.Rxd5 Rxd5  
22.Bxa7 Ra5 23.Bb6 Ra6 24.Bc5 Bxb2  
25.Rd1 with a roughly equal position

### 17...b6 18.a4 Ng4

18...Qb7 19.a5 Rd7 20.axb6 axb6 21.Bd2  
Nxd5 22.Nxd5 Rxd5 23.Be3 Rxd1+  
24.Rxd1 would win black a pawn

### 19.Nxg4 Qxg4 20.Be3 h5

20...Rc4 planning Rb4 would've increased  
black's winning chances. 21.d6 exd6

21.a5 bxa5 22.Bxa7 Qb4 23.Qxb4 axb4  
24.Bb6 Rd7 25.Ba5 Rb8 26.Ra4 b3  
27.Rd2 Rb5

The d-pawn is lost

28.Bb4 Rbxd5 29.Rxd5 Rxd5 30.Ra8+  
Kh7 31.Ba3 Rd2 32.Rb8 Bxb2

32...Bd4! the winning move, for a 2 pawn  
advantage versus a 1 pawn disadvantage  
would be better for the side with more  
material. 33.Rxb3 (33.Bxe7 Rxb2)  
33...Rxf2

### 33.Rxb3 Bxa3

Incorrect, leading to a rook and pawn  
endgame which would have high drawing  
chances. 33...Bd4 34.Rf3; 33...Bf6 34.h4  
Rd7 (34...g5 35.hxg5 Bxg5 36.Rb7 Re2  
37.Kf1 Re6 38.f4 Bf6 39.Kg2 Kg6 40.Kf3)  
34.Rxa3 Kg7

34...g5 necessary to prevent white from  
blockading black's pawns and making a  
draw 35.Ra7 Re2 36.Kf1 Re6 37.f4 Kg6  
38.fxg5 Kxg5 39.Kg2 Kf6 40.h3 Rd6  
41.g4 h4 42.Ra3 e6 43.Kf3 Kg5 44.Ke4  
Rb6

### 35.Ra7 Kf6 36.Ra6+ Rd6 37.Ra5 e5

37...g5 38.h4 gxh4 39.gxh4 Kg6 40.Rg5+  
Kh6 41.Re5 e6

### 38.Kg2 Rd3

38...g5 g5 is instrumental in trying to win  
4 vs 3 rook and pawn endings.

39.h4 Kf5 40.Rb5 Ke6 41.Rb6+ Rd6  
42.Rb5 e4 43.Ra5 Rd3 44.Ra6+ Ke7  
45.Ra7+ Kf6 46.Ra4 Ke5 47.Ra7 Ke6  
48.Ra6+ Rd6 49.Ra4 f5 50.Ra5 Kf6  
51.Ra8 Re6 52.Ra3 g5 53.Kh3 Kg6  
54.Ra8 gxh4 55.Kxh4 e3 56.fxe3 Re4+  
57.Kh3 Rxe3 58.Rg8+ Kh6 59.Rh8+  
Kg6 60.Rg8+ Kh7 61.Rg5 f4 62.Kh4 f3  
63.Rxh5+ Kg6 64.g4 Re6 65.Kg3 Rf6  
66.Rh2 f2 1/2-1/2

## MICHIGAN CHESS CLUBS

For club updates or new club listings, please contact Samanatha Shaffer at [shaffer1022@gmail.com](mailto:shaffer1022@gmail.com). Club information must be confirmed yearly to remain active on the MCA Club listing page. Clubs will also be listed on the MCA website ([www.michess.org](http://www.michess.org))

**Dearborn, Ford Chess Club** Tue 5:00-9:00pm; Ford Motor Co World Headquarters Cafeteria; North Entrance, Michigan Ave & Southfield Fwy; Everyone is welcome to attend/participate, not just Ford employees. Norm Haygood (248) 366-0954; George Oprean (586) 756-4967; e-mail: [nhaygoodjr@aol.com](mailto:nhaygoodjr@aol.com) or [Archangel365@comcast.net](mailto:Archangel365@comcast.net)  
**Detroit City Chess Club** Fri 4:00-8:00pm; Detroit Institute of Arts (DIA), 5200 Woodward Ave., Detroit, MI 48202; e-mail: [detroitchess@gmail.com](mailto:detroitchess@gmail.com) Phone: 888-888-8141 <http://www.detroitchessclub.com>

**Flint Chess Academy** 1<sup>st</sup> & 3<sup>rd</sup> Sat 3:00-5:30pm; Flint Public Library, 1026 E. Kearsley St, Flint, MI 48502; Check the Library website calendar to confirm dates: <http://www.fpl.info/>; Eric Earnest, 810-210-0517 / 810-965-6794; e-mail: [ericearnest@yahoo.com](mailto:ericearnest@yahoo.com)

**Flint, Genesee County Chess Club** Tue 6:30-9:30pm; Eastside Senior Citizens Center Activity Room, 3065 N. Genesee Rd; Flint, MI 48506; Jeff Aldrich (810) 955-7271, e-mail: [jeffchess64@gmail.com](mailto:jeffchess64@gmail.com)

**Grand Rapids Chess Club**  
<http://www.grandrapidschess.com/>

**Grosse Pointe Chess Club** Tue, 7:30-10:00pm; Downtown Borders, 17141 Kercheval St, North of Cadieux; Tim Kuhn (313) 884-0118 e-mail: timkuhn@yahoo.com

**Jackson Chess Club** Thu 7:00-12:00pm; Cottage Inn Pizza, 1208 W Michigan Ave, Jackson MI 49202; James Stockham email: jimio73@comcast.net; 517-395-4704

**Lansing Chess Club** Wed 6:00-10:00pm; Room #312, 422 North Washington Square, Lansing MI 48933; Tony Nichols e-mail: sensie48910@yahoo.com; 517-763-6756

**Livingston County Chess Club** Mon 6:00-9:00pm; Hartland Senior Center, 9525 E. Highland Rd (M-59), Howell, MI 48843, ¼-mile west of US-23; Mike Nikitin 810-599-6770; Website:

<http://www.livingstoncountychessclub.blogspot.com/>

Email: livingstoncountychessclub@hotmail.com

**Marquette Chess Club** Thu 7:00-11:00pm; Masonic Building, 128 West Washington St; [www.michess.org/up](http://www.michess.org/up);

<https://www.facebook.com/MarquetteChessClub>

Bob John, e-mail: rjjjr@chartermi.net

**Port Huron Chess Club** Thu 6:30-10:00pm (except holidays); Palmer Park Recreation Center, 2829 Armour St, Port Huron, 48460; Lon Rutkofske (810) 388-9219 e-mail: ishking@aol.com; Website: <http://porthuronchessclub.yolasite.com/>

**Sault Ste. Marie, Sugar Island Chess Klub** Thu 7:00pm; Hilltop Bar, 5389 E 1 1/2 Mile Road, Sugar Island; Glen Schmiede (906) 635-5791, e-mail: gschmiede@nodinwifi.com

**South Bend Chess Club (Indiana)** Thu 7:00-10:00pm; Meijer Store, 5020 Grape Rd, Mishawaka, IN ~4 Miles south of State line. Grape Rd 1/4 Mile South of Douglas Rd. Roger Blaine (574) 257-9033; e-mail: reblaine@hotmail.com

**South Bend, Chicory Cafe Chess Club (Indiana)** Mon 6:00-9:00pm at Chicory Cafe, 105 E. Jefferson Blvd. at Michigan St., South Bend IN. Contact Roger Blaine, (574) 257-9033, e-mail: zotshot@hotmail.com

**Troy Youth All-Star Chess Club** Sat 3:00-5:00pm; Troy Community Center -3179 Livernois Rd, Troy, MI 48083. The club is open to any K-12 students who are interested in improving his/her chess skills. Come in and have fun! Club information:

<http://games.groups.yahoo.com/group/TYASCC/>. Feng Zhong,

xyzf99@yahoo.com (248) 825-6192. Chris Hausner,

chausner\_mi@yahoo.com (313) 575-5617

**Universal Chess Club** Mon-Sat 12:00-6:00pm, Sun 12:00-5:00pm; 26640 Gratiot Ave, Roseville, MI 48066; Ed Mandell (586) 558-4790 e-mail: allthekingsmench@aol.com; Website:

[www.allthekingsmenchess.com](http://www.allthekingsmenchess.com); *All Ages/strengths welcome! Sets provided; clocks for rent. Snacks & beverages are available for purchase*

## Michigan Chess Tournament Calendar

## Early 2017

**Online Registration for MCA Events:** <https://www.onlineregistration.cc>

**Online MCA Membership Join or Renewals:**

<https://onlineregistration.cc/memberships/MCA/index.php>

Online Payments Accepted, Instant Feedback of Registration/Membership.

MCA recommends purchasing membership through our new online system prior to attending local events to avoiding processing delays.

All events require USCF and MCA memberships, and are No Smoking, No Computers unless otherwise stated. Memberships can be purchased at any tournament. Other state memberships are acceptable for non-Michigan residents. Please send your tournament announcements via e-mail to [jeffchess@chartermi.net](mailto:jeffchess@chartermi.net).

**PLEASE NOTE!** Events listed are a service of MCA. MCA is in no way responsible for cancellations or changes. Be sure to always contact your organizer! Website @ <http://www.michess.org>

### JANUARY TOURNAMENTS:

#### Jan 2-23 UNIVERSAL MONTH-LONG SWISS

All the King's Men Chess Supplies, 26640 Gratiot Ave, Roseville, MI 48066. **4-SS**. TL: G/90;d5. **Rds:** 6:15pm each week. **EF:** \$25. **Reg:** 4:30-6pm. **\$\$:** 70% of entries. **Ent/Info:** Dr. Ed Mandell, (586) 558-4790. Email: [allthekingsmench@aol.com](mailto:allthekingsmench@aol.com), <http://www.allthekingsmenchess.com>

#### Jan 10 Genesee County CC QUICK SWISS

Eastside Senior Center, 3065 N Genesee Rd, Flint, MI 48506. **5-SS**, One Section with Class Prizes. **Reg:** 6:00-6:25pm **Rds:** 6:30-7:30-8:30pm. **EF:** \$5 TL: G/13;d3. **\$\$:** 75%. **Ent/Info:** Jeff Aldrich 810-955-7271; [jeffchess64@gmail.com](mailto:jeffchess64@gmail.com)

#### Jan 14-15 ★★2017 MICHIGAN MASTER/EXPERT & CLASS CHAMPIONSHIPS ★★

*See Back Page for Detail*

#### Jan 21 Thinkers Challenge #4 \*\* New Location \*\*

Center for Advanced Technology, 1400 Oakman Blvd, Detroit MI 48238. **4-SS**. LUNCH: Concessions available on site. SUPERVISION: All children must have adult supervision. TDs will supervise playing area. Divisions: Unrated K-1, 2-3, 4-8 Rated: U600, U900, U1100, U1400, Open (Current USCF memb rqr'd. TL: G/45; d0. **Rds:** 1<sup>st</sup> Rd 9am-10:45am-12:30pm-2:15pm. **EF:** \$20 by 1/19 9pm, \$25 by 1/20 7pm, NO Onsite Reg. **Reg:** [weplaychess.webs.com](http://weplaychess.webs.com). Mail certified money orders to: Tom Nelson, 7354 S Quince Court, Centennial, CO 80112. **\$\$:** Trophies to Top Five each scholastic div. **Ent/Info:** Tom Nelson (303) 880-4332 or [weplaychess@comcast.net](mailto:weplaychess@comcast.net)

#### Jan 22 Troy Youth All-Star CC Action Quads

Troy Public Library, 510 W. Big Beaver, Troy, MI 48084. **3-SS**. **Reg:** 1pm for Payment. Advance only via e-mail/text. NO on-site registrations. **Rds:** 1:30-2:30-3:30pm. **EF:** \$5 registered by 1/19, \$10 registered on 1/20 TL: G/30 (G/25;d5). **\$\$:** 1<sup>st</sup> \$10, 2<sup>nd</sup> \$6 each quad. **Ent/Info:** Email USCF ID to [TYASCC@googlegroups.com](mailto:TYASCC@googlegroups.com) or register via webform, see link in listing on MCA website.

#### Jan 31 Genesee County CC Blitz Extravaganza!

Eastside Senior Center, 3065 N. Genesee Rd, Flint, MI 48506. **2-RR**. Sect of 6-8 by rtg.. **Reg:** 6:00-6:25pm **Rds:** Starts about 6:30pm. **EF:** \$5 TL: G/5 (no delay). **\$\$:** Sect of 8: 1<sup>st</sup> \$16-\$8; Sect of 7: 1<sup>st</sup> \$14-\$7; Sect of 6: \$12-\$6. **Ent/Info:** Jeff Aldrich 810-955-7271. [jeffchess64@gmail.com](mailto:jeffchess64@gmail.com)

### FEBRUARY TOURNAMENTS:

#### Feb 4 ★★ 2017 MICHIGAN ELEMENTARY/PRIMARY TEAM CHAMPIONSHIPS ★★

*See Page 6 for Details*

#### Feb 19 Troy Youth All-Star CC Action Quads

*See Jan 22 event for details.*

#### Feb 21 Genesee County C.C. Free Rated Swiss

Eastside Senior Citizens Center Activity Room. 3065 N Genesee Rd, Flint. **3-SS**, TL: G/25;d5. **Rds:** 6:30-7:30-8:30pm. **EF:** \$ Reg: 6:00-6:25pm **\$\$:** None. **Ent/Info:** Jeff Aldrich, (810) 955-7271, [jeffchess64@gmail.com](mailto:jeffchess64@gmail.com)

#### Feb 25 ★★ 2017 MICHIGAN JUNIOR HIGH & HIGH SCHOOL TEAM CHAMPIONSHIPS ★★

*See Page 6 for Details*

### MARCH TOURNAMENTS:

#### Mar 4 Thinkers Challenge #5

*See Jan 21 event for details.*

#### Mar 14 Genesee County C.C. Action Quads

Eastside Senior Citizens Center Activity Room. 3065 N. Genesee Rd, Flint. **3-RR**, Sect of 4 by Rtg, TL: G/25;d5. **Rds:** 6:30-7:30-8:30pm. **EF:** \$5 REG: 6-6:25pm **\$\$:** \$15/Quad. **Ent/Info:** Jeff Aldrich, (810) 955-7271, [jeffchess64@gmail.com](mailto:jeffchess64@gmail.com)

#### Mar 19 Troy Youth All-Star CC Action Quads

*See Jan 22 event for details.*

#### Mar 25-26 ★★ 2017 MICHIGAN JUNIOR CHAMPIONSHIPS ★★

*See Page 9 for Details*

### PLAN AHEAD CALENDAR:

#### Apr 1 Thinkers Challenge #6

UAW-Ford Bldg, 151 W Jefferson Ave, Detroit MI 48226  
*See Jan 21 event for other details.*

#### Apr 11 Genesee County CC QUICK SWISS

**Apr 23 / May 21 Troy Youth All-Star CC Action Quads**  
*See Jan 22 event for details.*

#### May 23 Genesee County CC Blitz Championship

#### Jun 3-4 ★★ 2017 MICHIGAN AMATEUR CHAMPIONSHIP ★★

MICHIGAN CHESS ASSOCIATION  
JEFF ALDRICH  
P.O. BOX 40  
FLINT, MI 48501

NON PROFIT  
ORGANIZATION  
U.S. POSTAGE PAID  
Flint, MI  
Permit No. 39

TIME DATED MATERIAL PLEASE EXPEDITE

## 2017 MICHIGAN MASTER/EXPERT & CLASS CHAMPIONSHIPS FOR EIGHT STATE CHAMPION CLASS TITLES!

**Lansing, January 14-15, 2017**

|   |   |
|---|---|
| <b>SITE:</b>  | Radisson Hotel Lansing, 111 N. Grand Avenue<br>(near the State Capitol in Downtown Lansing), (517) 482-0188   |
| <b>DIRECTIONS:</b>  | <b>From East:</b> I-496 to Grand Ave (Exit 7A), Right on Grand Ave.<br><b>From West:</b> I-496 to Pine/Walnut Streets (Exit 6), Left on Grand Ave.  |
| <b>ROOM RATE</b>  | \$110.95 + tax by January 2, 2017, after if space available.<br><a href="http://www.radisson.com/lansingmi">www.radisson.com/lansingmi</a> - Promotion Code: MCC117<br><i>Let us know if you are staying at the hotel for the tournament.</i>   |
| <b>8 SECTIONS:</b>  | Master/Expert (FIDE Rated), A, B, C, D, E (U1200)<br>Novice (Sat)/Fun Swiss (Sun): U1000/Unrated, 1-Day Each  |
| <b>MEMBERSHIPS:</b>   | Must be a member of the US Chess Federation & Michigan Chess Association. (Members of other state associations OK)  |
| <b>CLASS ELIGIBILITY:</b>   | The most recent USCF rating supplement will be used for determining ratings. Players must play in the class in which their rating indicates. Unrated players must play in the Novice section. Players may request to play up in class (or unrated players may request being seeded into a class) if their recent tournament history shows achievement into that class. The tournament director must approve all requests and will assign a rating to the player within the rating window of that class. |
| <b>ADVANCE ENTRY FEES:</b>  | <b>M/X:</b> \$45 (U18 \$5 off), Free entry to GM, IM, FM, & 2200+, adv entry fee deducted from prize.<br><b>A, B, C, D, E:</b> \$42 (U18 \$5 off), <b>Novice:</b> \$25; Advance entries must be paid by January 12. For entry fees paid after January 12, add \$10 more. <b>Fun Swiss:</b> \$15   |
| <b>ADVANCE REGISTRATION:</b>  | Online: <a href="https://onlineregistration.cc/">https://onlineregistration.cc/</a><br>Jeff Aldrich (TD), P.O. Box 40, Flint MI 48501;<br>Make Checks Payable to <b>MCA.</b><br><a href="mailto:jeffchess@charter.net">jeffchess@charter.net</a> ; (810) 955-7271   |
| <b>ON-SITE REGISTRATION:</b>  | Saturday: 8:00-9:00am<br>Fun Swiss (Sunday): 8:30-9:30am  |
| <b>ROUNDS:</b>  | <b>M/X, Class Sections:</b> Sat 10am, 2:30pm, 7 pm; Sun 10am, 2:30pm<br><b>Novice/Fun Swiss:</b> 10am, 11:30am, 1:30pm, 3pm, 4:30pm   |
| <b>TIME CONTROL:</b>  | <b>M/X, Class Sections:</b> G/115;d5<br><b>Novice/Fun Swiss:</b> G/30;d5  |
| <p><b>\$2850 GUARANTEED PRIZE FUND</b></p> <p><b>Master/Expert (GPP 10):</b> 1<sup>st</sup> \$300, 2<sup>nd</sup> \$200; <b>Expert:</b> \$230 <b>U2100:</b> \$120<br/> <b>Class A, B, C, D, E:</b> 1<sup>st</sup> \$180, 2<sup>nd</sup> \$120; <b>U1900/U1700/U1500/U1300/U1100:</b> \$100<br/> <b>Novice/Fun Swiss:</b> Trophies to Top 5 Overall, Top U800, Top U700, Top U600, Top Unrated.<br/> State Champions (Top Michigan Resident): Master/Expert, Expert, and Each Class plus Novice.<br/> Trophies for all place-winners listed above.</p> |   |